

MONTHLY OPERATIONS & NOISE SUMMARY

PAINE FIELD AIRPORT

JUNE 2011

ONLINE AT WWW.PAINEFIELD.COM

NOISE COMMENT FORM: [HTTP://WWW.PAINEFIELD.COM/NOISE/NOISEFORM.HTML](http://WWW.PAINEFIELD.COM/NOISE/NOISEFORM.HTML)

NOISE SUMMARY REPORTS: [HTTP://WWW.PAINEFIELD.COM/NOISE/NOISESUMMARY.HTML](http://WWW.PAINEFIELD.COM/NOISE/NOISESUMMARY.HTML)

PAINE FIELD HAPPENINGS: [HTTP://WWW.PAINEFIELD.COM/HAPPENINGS/HAPPENINGS.HTML](http://WWW.PAINEFIELD.COM/HAPPENINGS/HAPPENINGS.HTML)

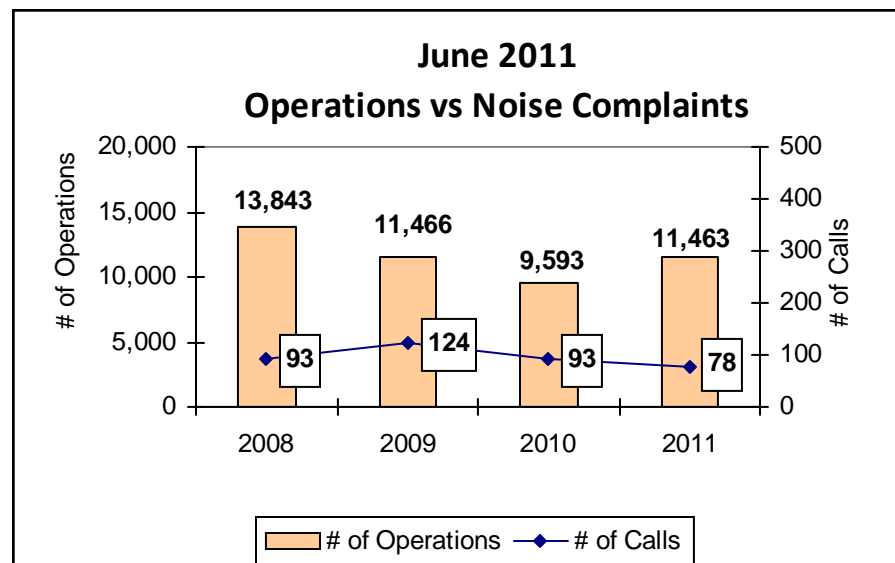
Noise Brief:

During June 2011, the airport office received 78 noise related calls and emails from individuals in the surrounding communities. All of the calls were regarding flight operations.

Complaints:

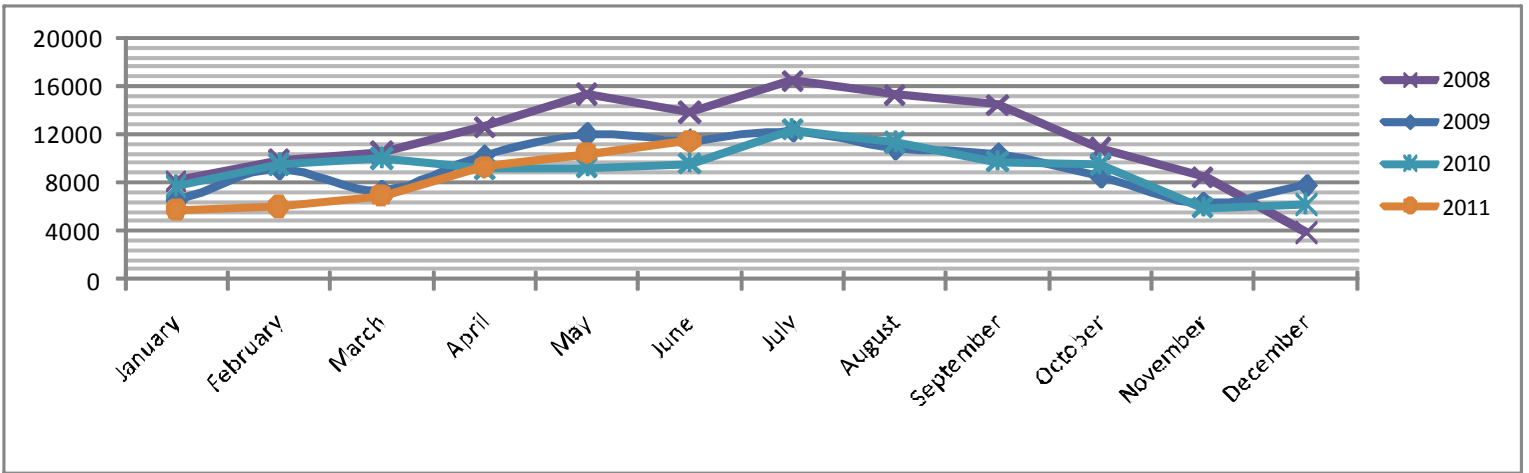
Many factors contribute to the amount of complaints received each month by how many people. Complaint totals are rarely consistent due to factors ranging from one unusual flight event that generates multiple complaints from a large group of people, an overcast day which blocks in sound, or perhaps a new homeowner that didn't notice the flight paths before the purchase of the property.

For further information, please
call Airport Operations at
425-388-5125



PAINE FIELD AIRPORT • 3220 100TH ST SW • EVERETT, WA 98204
NOISE HOTLINE: 425-353-2110 x1

Monthly Operations Levels 2008–2011

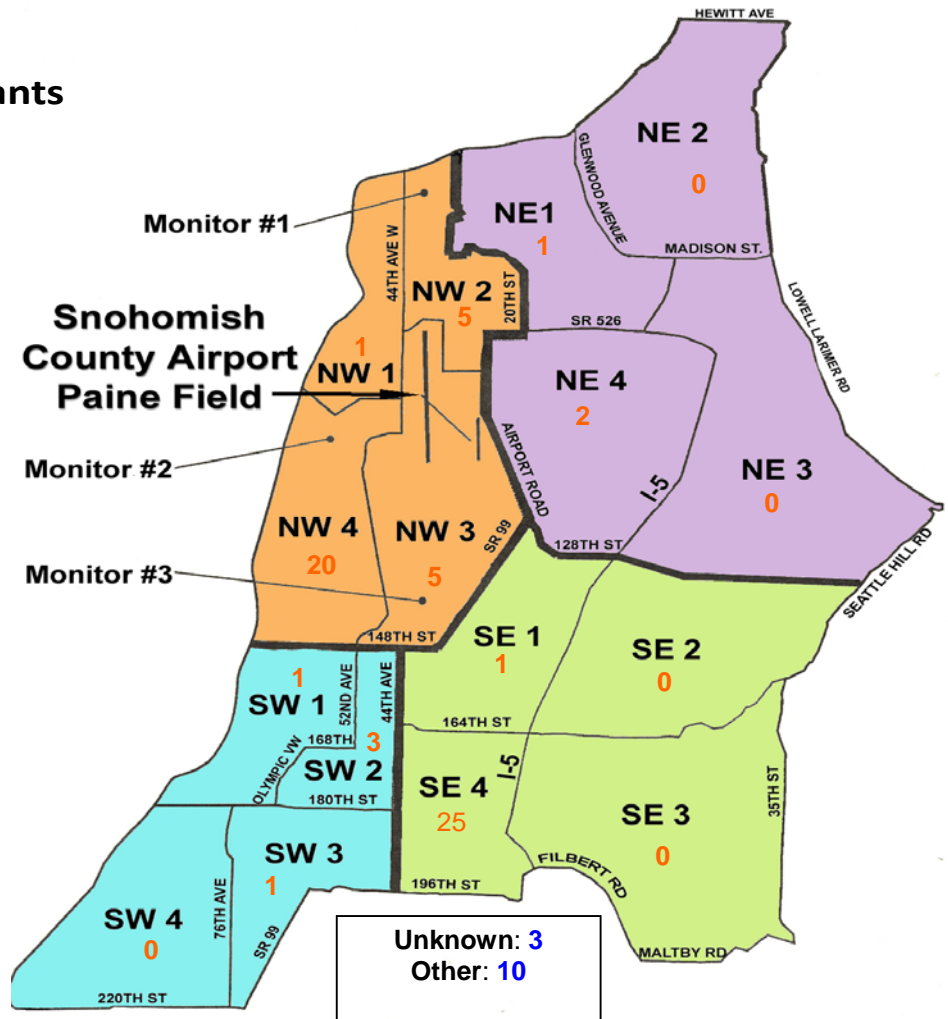


During June 2011, the FAA Paine Field Air Traffic Control Tower recorded 11,463 flight operations. This is a 20% increase in operations from June 2010, which had 9,593 operations.

The four-year average number of flight operations for the month of June is 11,591. Total operations for June 2011 is 1% below the four-year average.

Paine Field Community Quadrants

The graphic to the right depicts Paine Field's 16 noise quadrants. The red numbers within each quadrant represent how many calls were made from that quadrant in the month of June. "Unknown" represents complaints where the caller's quadrant was not identified. "Other" represents complaints from outside the four major quadrants.



Caller Complaints

Noise complaints are received via telephone hotline or through the airport web page noise complaint form .

Upon receipt, complaints are investigated. Airport staff uses the AIRSCENE data and other sources to help identify which operation generated the noise complaint. The FAA retains radar data for 3 days before providing it to the airport's AIRSCENE noise monitoring system.

The aircraft operator is then notified of the complaint and made aware of the airport's noise abatement program. Callers who specifically request to be contacted are called back.

Since FAA operations data is not released until the third week of the following month, the monthly

summary report is posted online (see *Online* on page 1) the fourth week of the following month.

Caller Identification Codes are listed in the first column of the complaint table. You should be able to identify yourself by the first 3 letters of your last name and the date and time you called in. If you are having trouble identifying your new code, please call the airport office and we will look you up.

First time callers will receive a one-time hard copy mailing of this monthly noise summary. After the initial mailing, future reports will be posted online at the websites listed on the front of this report. The aircraft operations listed on this page (and next) are presumed to have originated or completed their flights at Paine Field.

Caller Code	Date/Time	Flight Operation	Runway	Flight ID	Aircraft Type	Caller Comments	Community
FIS001	6/1/2011 9:57	DEP	16R	BOE523	747-8	Loud and Low	SE4
FIS001	6/2/2011 8:30	DEP	16R	BOE523	747-8	Loud and low	SE4
SMU001	6/2/2011 14:31	DEP	16R	N56RU	SR-22	Low, Loud	NW4
WOO010	6/3/2011 8:35	DEP	16R	BOE111	777-200	Noisy	NW4
Edw003	6/3/2011 9:30	DEP	34L	N600UA	DC-6	Outbound, Low over house	SW2
SHE007	6/3/2011 15:00	n/a	n/a	n/a	n/a	Loud and low	NW3
FIS001	6/3/2011 17:16	ARR	34L	GTI4151	747-LCF	Low & Loud	SE4
NGU001	6/3/2011 17:20						SE4
PTA001	6/3/2011 19:30	n/a	n/a	n/a	n/a	could not be traced	NW3
RAP001	6/4/2011 4:15	DEP	16R	GTI4532	747-LCF	Loud, Low	NW3
MON003	6/4/2011 4:30						SE1
GIO001	6/4/2011 12:00	DEP	16R	N124DT	GLF3	Between 1200 and 1600	NW4
BER009	6/4/2011 12:25	T & G	16R	FHC1	P-51 Mustangs	Continuous, deafening noise	NW3
BER009	6/4/2011 12:40						NW3
PEA003	6/4/2011 12:41						NW4
BEZ001	6/4/2011 12:46						NW4
FIS001	6/4/2011 17:12	DEP	16R	N721ES	Cessna Citation	Loud and low	SE4
WOO010	6/4/2011 17:15						NW4
KOE002	6/4/2011 18:00	n/a	n/a	n/a	n/a	Happens at least several times a week	SE4

Caller Complaints

Caller Code	Date/Time	Operation	Runway	Call Sign	Aircraft Type	Comments	Community
WOO010	6/5/2011 9:16	DEP	16R	BOE523	747-8	Noisy	NW4
WOO010	6/5/2011 12:10	n/a	n/a	n/a	n/a	Noisy	NW4
FIS001	6/5/2011 14:11	ARR	34L	BOE102	787-8	Loud & Low	SE4
TJA001	6/5/2011 15:00	n/a	n/a	n/a	n/a	General Traffic from 2-3	NW2
PHI001	6/5/2011 15:46	n/a	n/a	n/a	n/a	General Traffic, Loud & Low	NW2
STE013	6/5/2011 15:50						NW2
LIS001	6/5/2011 15:50						NW2
JOH002	6/5/2011 16:34	n/a	n/a	n/a	n/a	General Traffic	NW1
EDW003	6/5/2011 17:20	ARR	34L	N4070	C-337	Low over house	SW2
FIS001	6/5/2011 18:36	ARR	34L	BOE004	787	Loud, Low	SE4
WOO010	6/6/2011 17:39	DEP	16R	BOE780	737-800	Noisy	NW4
WOO010	6/9/2011 13:12	n/a	n/a	n/a	n/a	Noisy	NW4
WOO010	6/11/2011 11:18	DEP	16R	BOE997	737-800	Noisy	NW4
WOO010	6/11/2011 11:29	DEP	16R	BOE703	737-800	Noisy	NW4
WOO010	6/11/2011 14:45	n/a	n/a	n/a	could not be traced	Noisy	NW4
FIS001	6/12/2011 13:35	DEP	16R	SWA8500	767-300	Loud & Low	SE4
FIS001	6/12/2011 17:48	ARR	34L	SWA8507	737-300	Loud & Low	SE4
WOO010	6/12/2011 18:34	DEP	16R	GTI4512	747-LCF	Low, Loud	NW4
FIS001	6/12/2011 18:34						SE4
AND006	6/12/2011 18:36						SW3
FIS001	6/12/2011 18:39						SE4
FIS001	6/13/2011 17:37	ARR	34L	N129TS	Lear Jet 35	Loud	SE4
WOO010	6/13/2011 17:39						NW4
HAU001	6/13/2011 18:14	ARR	34L	BOE522	747-8	Loud	NW4
FIS001	6/14/2011 14:02	ARR	16R	BOE135	777-300	Loud & Low	SE4
FIS001	6/14/2011 18:10	ARR	34L	ASA9201	737-400	Loud & Low	SE4
HEL005	6/14/2011 18:41	n/a	n/a	n/a	n/a	out of flight path	NW2
FIS001	6/15/2011 7:33	DEP	16R	BOE523	747-8	Low & Noisy	SE4
FIS001	6/15/2011 11:03	DEP	16R	BOE421	737-800	Loud & Low	SE4
FIS001	6/15/2011 11:08						SE4
FIS001	6/16/2011 8:44	ARR	34L	N713AZ	PRM1	and noise	SE4
DAR001	6/17/2011 18:28	Tranisti oning		AIRLIFT5	EC-135	Noisy	NW4
GRU001	6/19/2011 23:06	ARR	34L	BOE522	747-8	Loud, Late	OTH
GRU001	6/19/2011 23:27	ARR	16R	GTI4351	747-LCF	Low over the house	OTH
WOO010	6/20/2011 11:51	ARR	16R	BOE276	767-300	Loud, Low	NW4
GRU001	6/20/2011 17:37	n/a	n/a	n/a	n/a	Loud, Low	OTH

Caller Complaints

Caller Code	Date/Time	Flight Operation	Runway	Call Sign	Aircraft Type	Comments	Community
FIS001	6/21/2011 7:08	DEP	16R	BOE523	747-8	Low & loud	SE4
FIS001	6/21/2011 7:35	n/a	n/a	n/a	n/a	and low	SE4
JAK003	6/21/2011 7:47	n/a	n/a	n/a	n/a	n/a	NE4
JAK003	6/21/2011 8:07	n/a	n/a	n/a	n/a		NE4
FIS001	6/21/2011 9:22	DEP	16R	GTI4542	747-LCF	Low & Loud	SE4
BOV002	6/21/2011 19:55	ARR	34L	BOE523	747-8	and loud	SW1
EDW003	6/21/2011 19:55						SW2
KUL001	6/23/2011 0:23	DEP	16R	SWA8511	737-300	Late, Loud	NE1
THO009	6/24/2011 2:24	n/a	n/a	n/a	n/a	Helicopter	OTH
FRA003	6/24/2011 11:44	T & G	16R	BOE130	737-800	Loud & intrusive	OTH
FIS001	6/24/2011 19:02	ARR	34L	BOE523	747-8	Low and loud	SE4
GRU001	6/25/2011 14:04	n/a	n/a	n/a	n/a	Low & Loud	OTH
GRU001	6/25/2011 18:34	DEP	34L	GTI4512	747-LCF	Low, and Loud	OTH
WOO010	6/26/2011 12:05	T & G	16R	BOE531	737-700	Noisy	NW4
WOO010	6/27/2011 9:13	ARR	16R	BOE276	767-300	Noisy	NW4
FIS001	6/27/2011 13:50	DEP	16R	BOE522	747-8	Loud & Low	SE4
GRU001	6/27/2011 18:29	ARR	16R	BOE523	747-8	Low & Loud	OTH
GRU001	6/28/2011 12:50	DEP	34L	BOE102	787	Low & Very Loud	OTH
FRA003	6/28/2011 13:47	T & G	16R	BOE170	737-800	Loud & Intrusive	OTH
GRU001	6/28/2011 13:52						OTH
DAR001	6/28/2011 18:10	T & G	16R	BOE177	777-300	Loud, Low	NW4
MAS001	6/29/2011 2:24	n/a	n/a	n/a	n/a	Noisy helicopter	OTH