

# MONTHLY OPERATIONS & NOISE SUMMARY

Paine Field Airport

October 2012

ONLINE AT [WWW.PAINEFIELD.COM](http://WWW.PAINEFIELD.COM)

NOISE COMMENT FORM: [HTTP://WWW.PAINEFIELD.COM/NOISE/NOISEFORM.HTML](http://WWW.PAINEFIELD.COM/NOISE/NOISEFORM.HTML)

NOISE SUMMARY REPORTS: [HTTP://WWW.PAINEFIELD.COM/NOISE/NOISESUMMARY.HTML](http://WWW.PAINEFIELD.COM/NOISE/NOISESUMMARY.HTML)

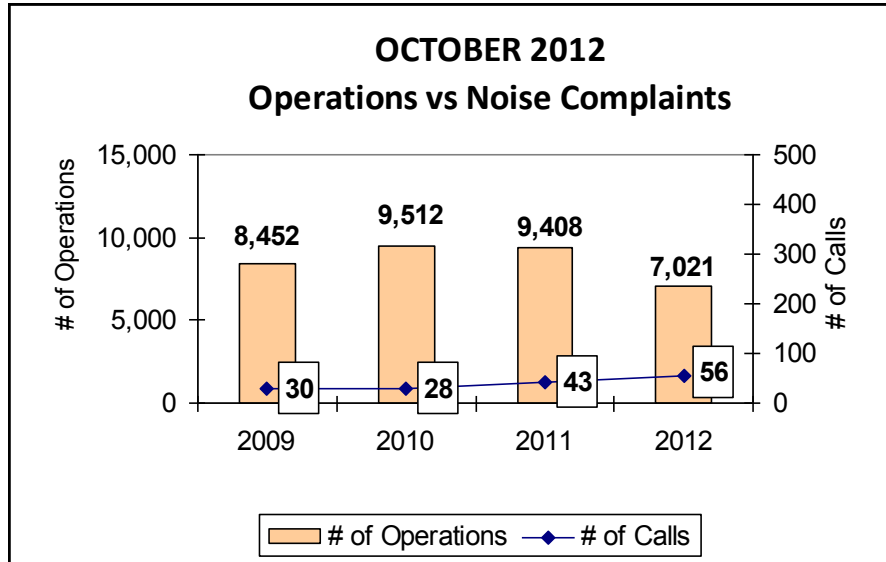
PAINE FIELD HAPPENINGS: [HTTP://WWW.PAINEFIELD.COM/HAPPENINGS/HAPPENINGS.HTML](http://WWW.PAINEFIELD.COM/HAPPENINGS/HAPPENINGS.HTML)

## Noise Brief:

During October 2012, the airport office received 56 noise related calls and emails from individuals in the surrounding communities. There were 0 calls regarding engine runs.

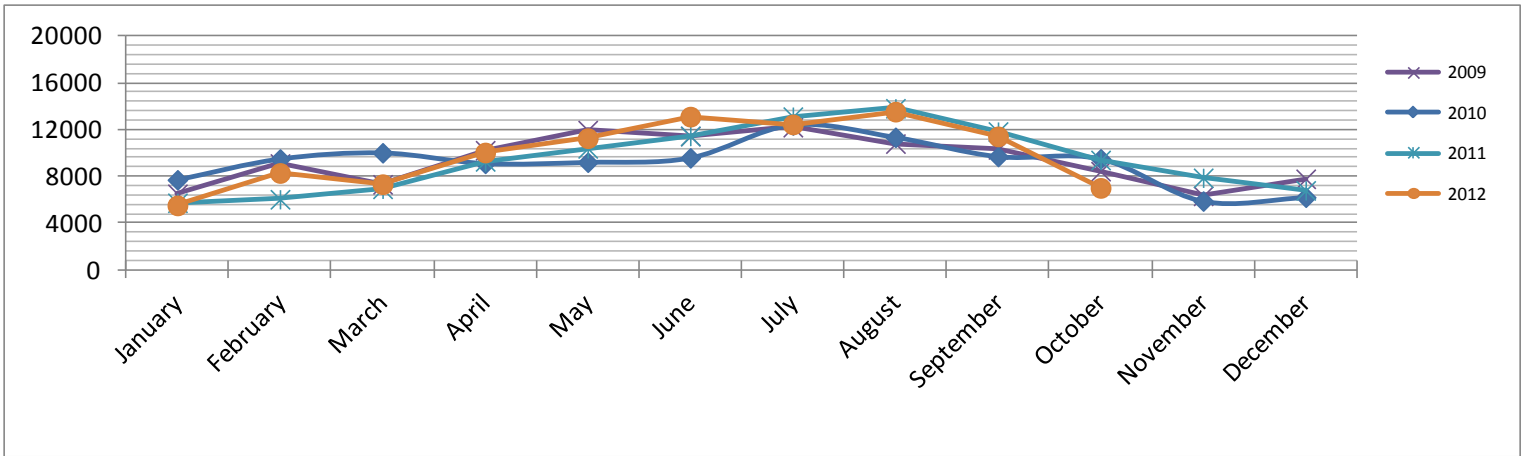
## Complaints:

Many factors contribute to the amount of complaints received each month by how many people. Complaint totals are rarely consistent due to factors ranging from one unusual flight event that generates multiple complaints from a large group of people, an overcast day which blocks in sound, or perhaps a new homeowner that didn't notice the flight paths before the purchase of the property.



For further information, please call Airport Operations at 425-388-5125  
PAINE FIELD AIRPORT • 3220 100TH ST SW • EVERETT, WA 98204  
NOISE HOTLINE: 425-353-2110 x1

## Monthly Operations Levels 2009—2012

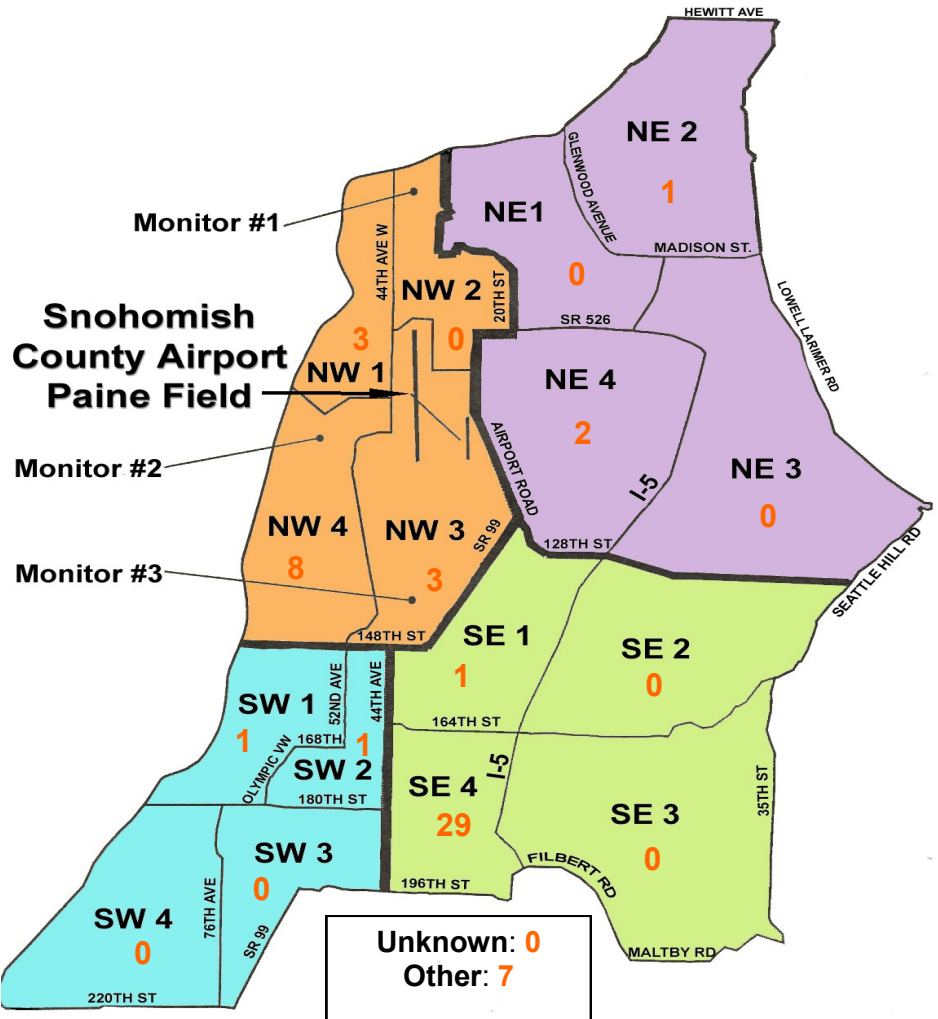


During October 2012, the FAA Paine Field Air Traffic Control Tower recorded 7,021 flight operations. This is a 25.4% decrease in operations from October 2011, which had 9,408 operations.

The four-year average number of flight operations for the month of October is 8,598. Total operations for October 2012 is 18.3% below the four-year average.

## Paine Field Community Quadrants

The graphic to the right depicts Paine Field's 16 noise quadrants. The red numbers within each quadrant represent how many calls were made from that quadrant in the month of October. "Unknown" represents complaints where the caller's quadrant was not identified. "Other" represents complaints from outside the four major quadrants.



## Caller Complaints

Noise complaints are received via telephone hotline or through the airport web page noise complaint form.

Upon receipt, complaints are investigated. Airport staff uses the AIRSCENE data and other sources to help identify which operation generated the noise complaint. The FAA retains radar data for 3 days before providing it to the airport's AIRSCENE noise monitoring system.

The aircraft operator is then notified of the complaint and made aware of the airport's noise abatement program. Callers who specifically request to be contacted are called back.

Since FAA operations data is not released until the third week of the following month, the monthly

summary report is posted online at [www.paineairport.com](http://www.paineairport.com) the fourth week of the following month.

**Caller Identification Codes are listed in the first column of the complaint table. You should be able to identify yourself by the first 3 letters of your last name and the date and time you called in. If you are having trouble identifying your new code, please call the airport office and we will look you up.**

First time callers will receive a one-time hard copy mailing of this monthly noise summary. After the initial mailing, future reports will be posted online at the websites listed on the front of this report. The aircraft operations listed on this page (and next) are presumed to have originated or completed their flights at Paine Field.

Caller Code	Date/Time	Operation	Runway	Flight ID	Aircraft Type	Comments	Community
STE019	10/1/2012 6:08	DEP	34L	GTI4516	LCF		NW4
SNO001	10/1/2012 6:15						NW1
FIS001	10/1/2012 12:45	DEP	16R	DAL9934	767-400	Low and loud	SE4
FIS001	10/1/2012 13:16	DEP	16R	GTI4512	LCF	Low and loud	SE4
HAT003	10/1/2012 16:30	n/a	n/a	n/a	n/a	General complaint: Increased traffic	SE1
FIS001	10/1/2012 16:30	ARR	34L	BOE063	777-200	Low and loud	SE4
FIS001	10/1/2012 16:45	ARR	34L	GTI4351	LCF	Low and loud	SE4
GRA002	10/1/2012 18:15	Transiting	n/a	UNKN	UNKN	Low and loud	NW1
HIG003	10/1/2012 18:25	ARR	34L	AMF1961	Beech 1900		SW1
FIS001	10/1/2012 18:43	n/a	n/a	UNKN	UNKN	Low and loud	SE4
POS001	10/1/2012 20:16	ARR	16R	DAL9935	767-300		NE2
MCF003	10/2/2012 10:00	ARR	34L	GTI852	LCF	Increase of frequency of flights	OTH
WIL021	10/2/2012 13:43	ARR	34L	BOE025	747-8		OTH
FIS001	10/2/2012 17:57	ARR	34L	BOE501	747-8	Low and loud	SE4
FIS001	10/3/2012 16:03	ARR	34L	GTI4351	LCF	Low and loud	SE4
FIS001	10/3/2012 16:30	ARR	34L	GTI4151	LCF	Low and loud	SE4
PAK001	10/3/2012 23:23	DEP	34L	ETH9202	787-8		NW4
STE019	10/3/2012 23:24						NW4
RAP001	10/4/2012 2:40	DEP	16R	GTI4536	LCF	Low and loud	NW3
WIL021	10/4/2012 2:45						OTH
FIS001	10/4/2012 11:02	ARR	34L	BOE005	787-8	Low and loud	SE4
SAW001	10/5/2012 0:00	n/a	n/a	n/a	n/a	General complaint: Boeing test flights	SE4
WIL021	10/5/2012 13:37	ARR	34L	GTI4351	LCF	Low and loud	OTH
FIS001	10/6/2012 11:41	ARR	34L	AAL9615	737-800	Low and loud	SE4
FIS001	10/6/2012 11:43						SE4
FIS001	10/7/2012 14:09	DEP	34L	BOE264	787-8	Low and loud	SE4
SMU001	10/8/2012 9:04	n/a	n/a	UNKN	UNKN		NW4
SMU001	10/8/2012 12:05	DEP	16R	GTI4532	LCF	Low and loud	NW4

Caller Code	Date/Time	Operation	Runway	Flight ID	Aircraft Type	Comments	Community
RAP001	10/10/2012 19:50	DEP	16R	GTI4516	LCF	Low and loud	NW3
FIS001	10/10/2012 19:53						SE4
FIS001	10/10/2012 21:31	DEP	16R	SWA8505	737	Low and loud	SE4
TIM002	10/17/2012 16:00	ARR	34L	54528	Hughes Heli	Low and loud	NE4
FIS001	10/17/2012 23:31	ARR	34L	N835TM	Hawker 800	Low and loud	SE4
FIS001	10/17/2012 23:49	DEP	16R	SWA8501	737-800	Low and loud	SE4
JOH016	10/18/2012 0:01	ARR	16R	GTI4356	LCF		NW4
STE001	10/18/2012 5:19	DEP	16R	GTI4532	LCF		SW2
FIS001	10/18/2012 8:56	DEP	16R	BOE560	747-8		SE4
KOR001	10/19/2012 5:18	DEP	16R	GTI4512	LCF		NW3
FIS001	10/21/2012 14:52	DEP	16R	FDB9756	737-800	Low and loud	SE4
EDG002	10/21/2012 23:45	T/G	16L	N338	C-172		NW1
FIS001	10/22/2012 8:54	DEP	UNK	BOE560	747-8	Low and loud	SE4
FIS001	10/22/2012 13:02	DEP	16R	GTI4516	LCF	Low and loud	SE4
FIS001	10/22/2012 13:17						SE4
FIS001	10/22/2012 14:30	DEP	16R	AAL9632	737-800	Low and loud	SE4
NOR005	10/23/2012 10:42	DEP	16R	109400	787-8		OTH
TIM002	10/24/2012 16:20	Transiting	n/a	UNKN	UNKN		NE4
PET013	10/24/2012 23:14	Transiting	n/a	R26451	Blackhawk	Low and loud	OTH
FIS001	10/25/2012 18:04	DEP	16R	LAN1315	787-8	Low and loud	SE4
FIS001	10/26/2012 16:49	DEP	16R	CPA3335	747-8	Low and loud	SE4
FIS001	10/26/2012 18:48	n/a	n/a	UNKN	UNKN	Low and loud	SE4
BAD003	10/27/2012 5:28	DEP	16R	GTI4542	LCF		SE4
GRU001	10/28/2012 16:25	Transiting	16R	N30322	P28A	Low and loud	OTH
STE019	10/29/2012 3:20	DEP	16R	GTI4512	LCF		NW4
SMU001	10/30/2012 12:37	DEP	16R	DHK123F	767-300		NW4
FIS001	10/30/2012 13:24	DEP	16R	THA8938	777-300	Low and loud	SE4
FIS001	10/30/2012 15:27	DEP	16R	GTI4512	LCF	Low and loud	SE4