

MONTHLY OPERATIONS & NOISE SUMMARY

Paine Field Airport

November 2012

ONLINE AT WWW.PAINEFIELD.COM

NOISE COMMENT FORM: [HTTP://WWW.PAINEFIELD.COM/NOISE/NOISEFORM.HTML](http://WWW.PAINEFIELD.COM/NOISE/NOISEFORM.HTML)

NOISE SUMMARY REPORTS: [HTTP://WWW.PAINEFIELD.COM/NOISE/NOISESUMMARY.HTML](http://WWW.PAINEFIELD.COM/NOISE/NOISESUMMARY.HTML)

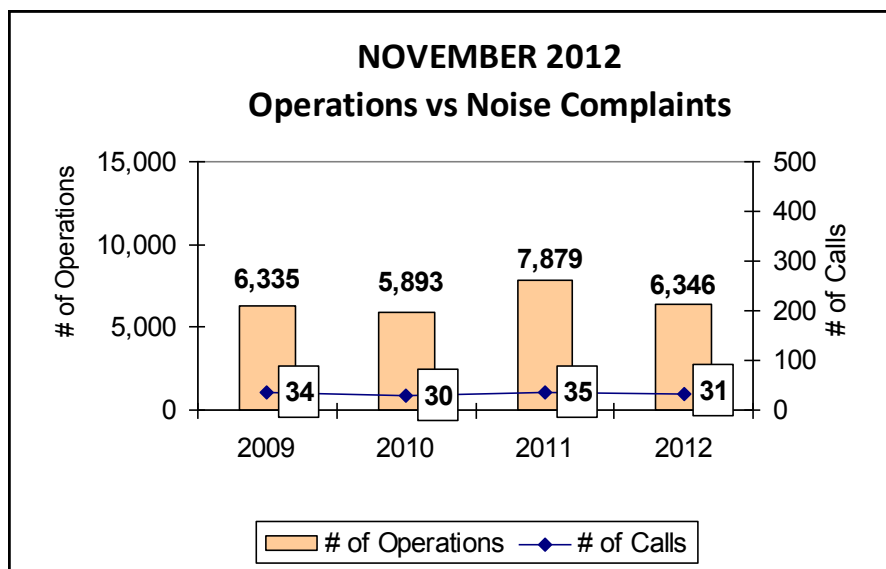
PAINE FIELD HAPPENINGS: [HTTP://WWW.PAINEFIELD.COM/HAPPENINGS/HAPPENINGS.HTML](http://WWW.PAINEFIELD.COM/HAPPENINGS/HAPPENINGS.HTML)

Noise Brief:

During November 2012, the airport office received 31 noise related calls and emails from individuals in the surrounding communities. There were 0 calls regarding engine runs.

Complaints:

Many factors contribute to the amount of complaints received each month by how many people. Complaint totals are rarely consistent due to factors ranging from one unusual flight event that generates multiple complaints from a large group of people, an overcast day which blocks in sound, or perhaps a new homeowner that didn't notice the flight paths before the purchase of the property.



During November 2012, the FAA Paine Field Air Traffic Control Tower recorded 6,346 flight operations. This is a 19.5 % decrease in operations from November 2011, which had 7,879 operations.

The four-year average number of flight operations for the month of November is 6613. Total operations for November 2012 is 4% below the four-year average.

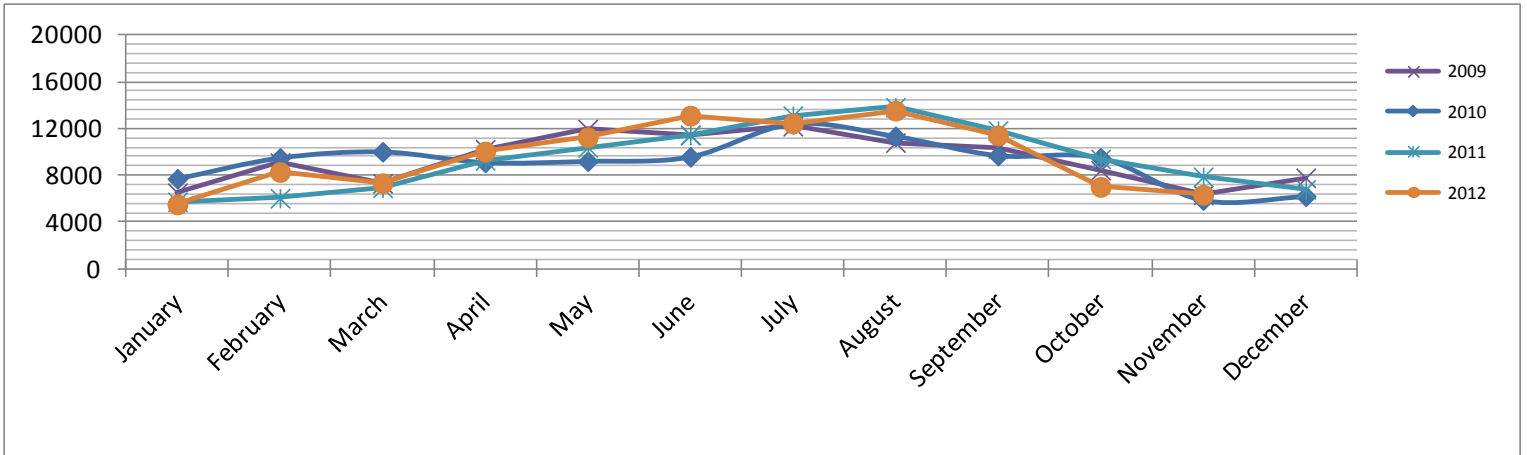
1 caller accounted for 58% of all noise complaints this month.

PAINE FIELD AIRPORT • 3220 100TH ST SW • EVERETT, WA 98204

NOISE HOTLINE: 425-353-2110 x1

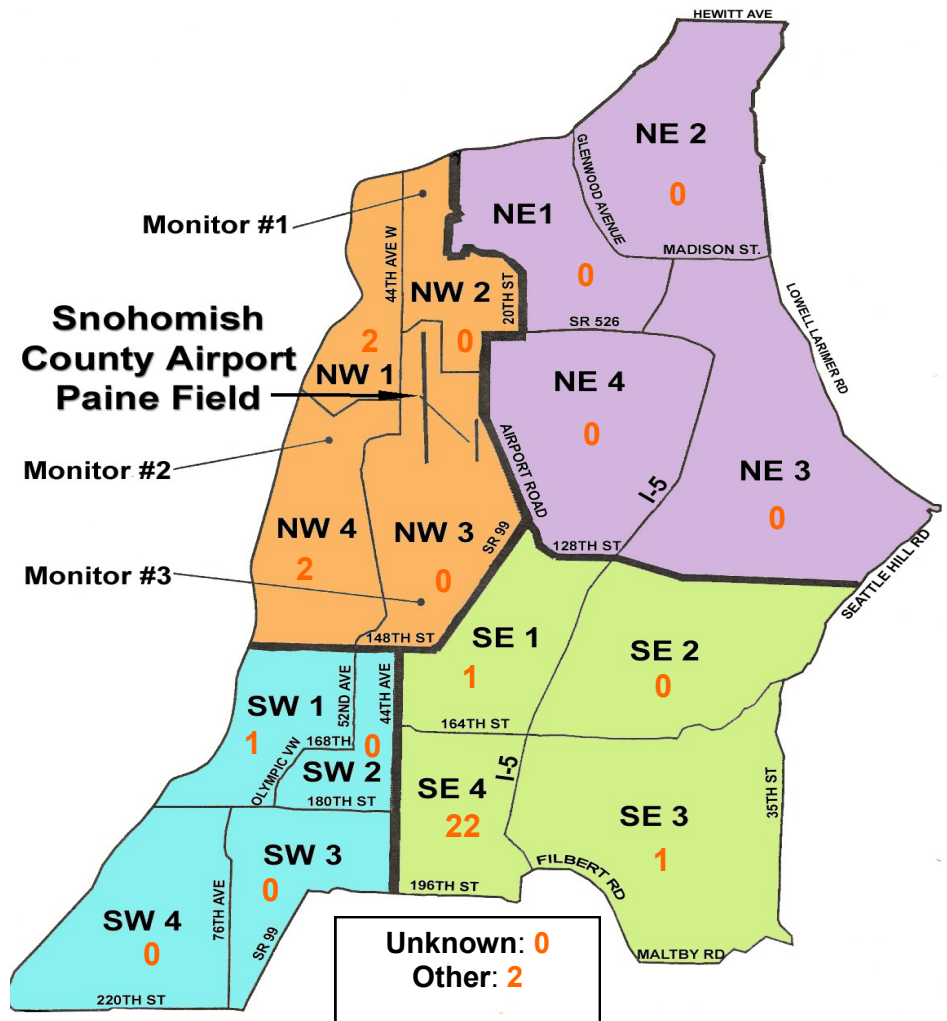
For further information, please call Airport Operations at 425-388-5125

Monthly Operations Levels 2009—2012



Paine Field Community Quadrants

The graphic to the right depicts Paine Field's 16 noise quadrants. The red numbers within each quadrant represent how many calls were made from that quadrant in the month of November. "Unknown" represents complaints where the caller's quadrant was not identified. "Other" represents complaints from outside the four major quadrants.



Caller Complaints

Noise complaints are received via telephone hotline or through the airport web page noise complaint form.

Upon receipt, complaints are investigated. Airport staff uses the AIRSCENE data and other sources to help identify which operation generated the noise complaint. The FAA retains radar data for 3 days before providing it to the airport's AIRSCENE noise monitoring system.

The aircraft operator is then notified of the complaint and made aware of the airport's noise abatement program. Callers who specifically request to be contacted are called back.

Since FAA operations data is not released until the third week of the following month, the monthly

summary report is posted online at www.painefield.com the fourth week of the following month.

Caller Identification Codes are listed in the first column of the complaint table. You should be able to identify yourself by the first 3 letters of your last name and the date and time you called in. If you are having trouble identifying your new code, please call the airport office and we will look you up.

First time callers will receive a one-time hard copy mailing of this monthly noise summary. After the initial mailing, future reports will be posted online at the websites listed on the front of this report. The aircraft operations listed on this page (and next) are presumed to have originated or completed their flights at Paine Field.

Caller Code	Date/Time	Operation	Runway	Flight ID	Aircraft Type	Comments	Community
FIS001	11/1/2012 10:39	DEP	16R	GTI4542	747-LCF	Loud	SE4
FIS001	11/2/2012 11:57	DEP	16R	UNKNOWN	UNKNOWN	Low	SE4
FIS001	11/2/2012 13:09	DEP	16R	GTI4512	747-LCF	Low	SE4
FIS001	11/3/2012 9:59	DEP	UNK	KAC8043	747-8	Low	SE4
FIS001	11/4/2012 23:46	DEP	34L	SWA8508	737	Loud	SE4
LAR003	11/5/2012 10:02	ARR	34L	734QQ	C-172		SE1
ALS004	11/7/2012 1:10	n/a	n/a	n/a	n/a	\$11,000,000 not used for locals	SW1
FIS001	11/7/2012 11:05	DEP	16R	GTI4532	747-LCF	Loud	SE4
FIS001	11/8/2012 7:54	ARR	34L	GTI4352	747-LCF	Loud	SE4
FIS001	11/9/2012 15:44	DEP	16R	SWA8701	737-800	Loud	SE4
WOO015	11/10/2012 8:41	Transiting	n/a	CG65G	C-182	Loud and noisy	SE4
FIS001	11/10/2012 18:34	DEP	16R	GTI4536	747-LCF	Loud	SE4
FIS001	11/12/2012 18:04	DEP	16R	N300AA	LJ45	Low	SE4
FIS001	11/15/2012 10:28	DEP	16R	GTI4536	747-LCF	Noisy	SE4
FRO001	11/16/2012 12:55	ARR	16R	BOE007	747-8		OTH
FIS001	11/20/2012 8:46	DEP	16R	BOE008	767-300	Loud	SE4
FIS001	11/20/2012 23:41	DEP	16R	ETH9201	787-8	Low	SE4
NIE001	11/21/2012 16:55	DEP	16R	GTI4536	747-LCF		SE3
MOO003	11/21/2012 17:05	Transiting	16R	BOE604	747-8		NW4
FIS001	11/22/2012 10:58	Transiting	16R	46MG	PA-46	Low	SE4
FIS001	11/22/2012 11:07	Transiting	UNK	UNKNOWN	UNKNOWN	Low	SE4
RAN001	11/24/2012 6:15	UNK	UNK	UNKNOWN	UNKNOWN		NW4

Caller Code	Date/Time	Operation	Runway	Flight ID	Aircraft Type	Comments	Community
FIS001	11/25/2012 13:48	ARR	34L	BOE007	747-8	Low	SE4
GAH002							SE4
GRI009							OTH
NGU002	11/25/2012 16:00	ARR	34L	N7386B	BE35		SE4
GAH002	11/25/2012 16:20	ARR	34L	GTI4151	747-LCF	Frequency of flights	SE4
FIS001	11/25/2012 17:18	T/G	34L	UNKNOWN	737	Low	SE4
FIS001	11/26/2012 11:47	ARR	34L	BOE036	777-200	Low	SE4
HAU002	11/28/2012 22:51	UKN	n/a	UNKNOWN	UNKN	Constant whining sound.	NW1
HAU002	11/28/2012 23:04	UKN	n/a	UNKNOWN	UNKN	Ongoing 4 hours or more.	NW1