

MONTHLY OPERATIONS & NOISE SUMMARY

Paine Field Airport

December 2012

ONLINE AT WWW.PAINEFIELD.COM

NOISE COMMENT FORM: [HTTP://WWW.PAINEFIELD.COM/NOISE/NOISEFORM.HTML](http://WWW.PAINEFIELD.COM/NOISE/NOISEFORM.HTML)

NOISE SUMMARY REPORTS: [HTTP://WWW.PAINEFIELD.COM/NOISE/NOISESUMMARY.HTML](http://WWW.PAINEFIELD.COM/NOISE/NOISESUMMARY.HTML)

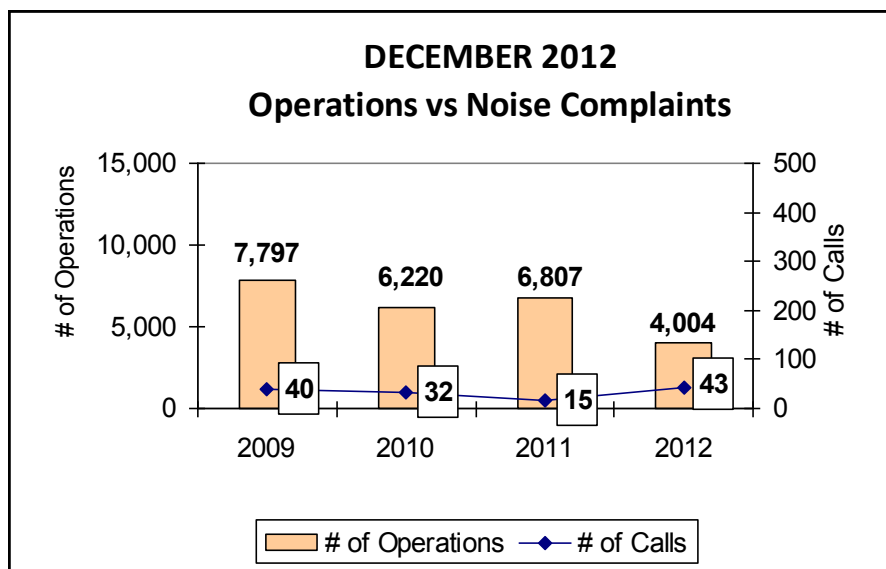
PAINE FIELD HAPPENINGS: [HTTP://WWW.PAINEFIELD.COM/HAPPENINGS/HAPPENINGS.HTML](http://WWW.PAINEFIELD.COM/HAPPENINGS/HAPPENINGS.HTML)

Noise Brief:

During December 2012, the airport office received 43 noise related calls and emails from individuals in the surrounding communities. 1 of the calls was regarding engine runs. 1 caller accounted for 30.% of all noise complaints this month.

Complaints:

Many factors contribute to the amount of complaints received each month and by how many people. Complaint totals are rarely consistent due to factors ranging from one unusual flight event that generates multiple complaints from a large group of people, an overcast day which blocks in sound, or perhaps a new homeowner that didn't notice the flight paths before the



During December 2012, the FAA Paine Field Air Traffic Control Tower recorded 4,004 flight operations. This is a 41% decrease in operations from December 2011, which had 6,807 operations.

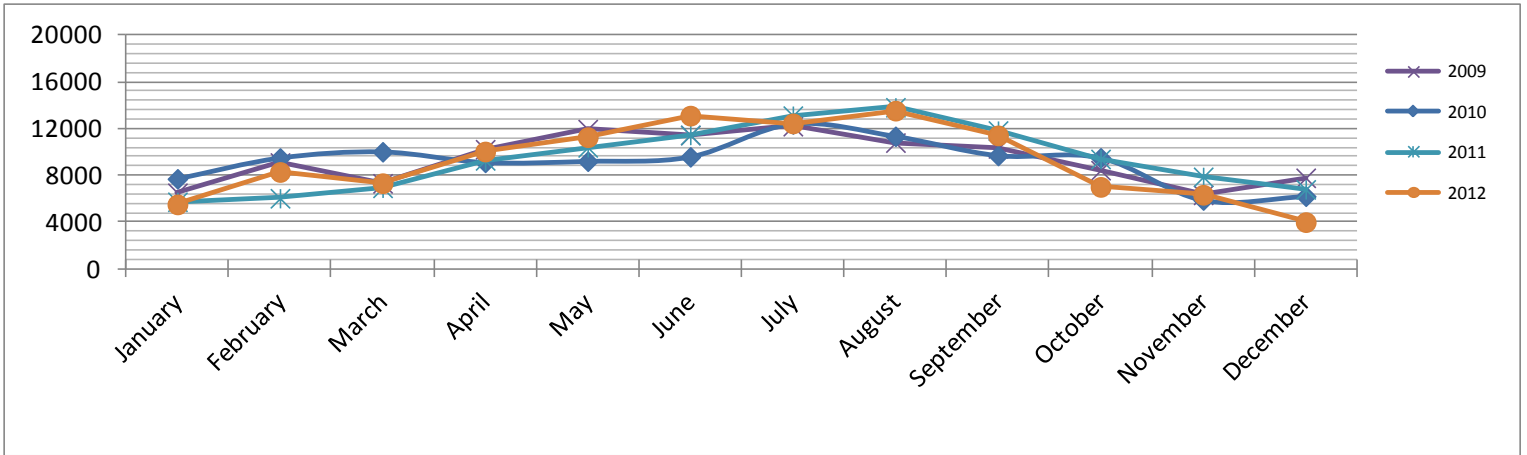
The four-year average number of flight operations for the month of December is 6,471. Total operations for December 2012 is 38% below the four-year average.

PAINE FIELD AIRPORT • 3220 100TH ST SW • EVERETT, WA 98204

NOISE HOTLINE: 425-353-2110 x1

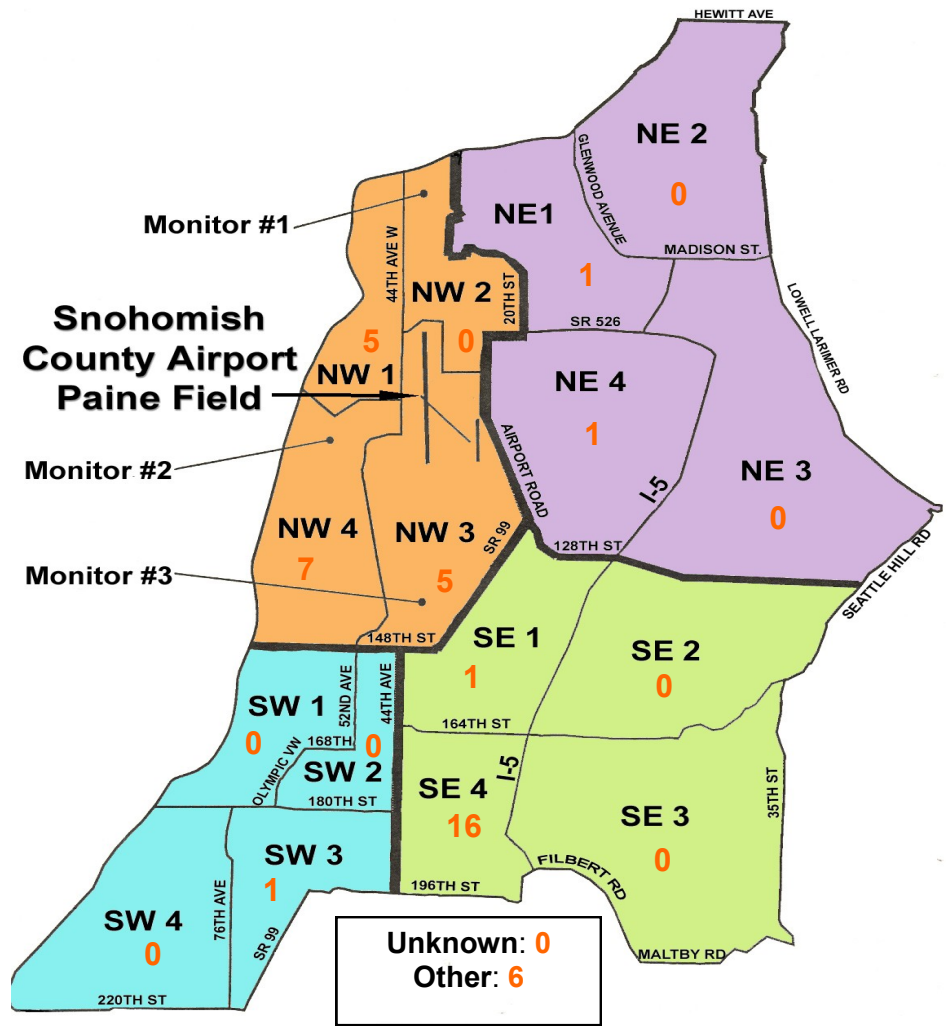
For further information, please call Airport Operations at 425-388-5125

Monthly Operations Levels 2009—2012



Paine Field Community Quadrants

The graphic to the right depicts Paine Field's 16 noise quadrants. The red numbers within each quadrant represent how many calls were made from that quadrant in the month of December. "Unknown" represents complaints where the caller's quadrant was not identified. "Other" represents complaints from outside the four major quadrants.



Caller Complaints

Noise complaints are received via telephone hotline or through the airport web page noise complaint form.

Upon receipt, complaints are investigated. Airport staff uses the AIRSCENE data and other sources to help identify which operation generated the noise complaint. The FAA retains radar data for 3 days before providing it to the airport's AIRSCENE noise monitoring system.

The aircraft operator is then notified of the complaint and made aware of the airport's noise abatement program. Callers who specifically request to be contacted are called back.

Since FAA operations data is not released until the third week of the following month, the monthly

summary report is posted online at www.paineairport.com the fourth week of the following month.

Caller Identification Codes are listed in the first column of the complaint table. You should be able to identify yourself by the first 3 letters of your last name and the date and time you called in. If you are having trouble identifying your new code, please call the airport office and we will look you up.

First time callers will receive a one-time hard copy mailing of this monthly noise summary. After the initial mailing, future reports will be posted online at the websites listed on the front of this report. The aircraft operations listed on this page (and next) are presumed to have originated or completed their flights at Paine Field.

Caller Code	Date/Time	Operation	Runway	Flight ID	Aircraft Type	Comments	Community
FIS001	12/1/2012 0:38	TRANSITING	N/A	ALFT	EC-35		SE4
GRU002	12/1/2012 17:26	DEP	16R	BOE007	747-8	Loud and Low	OTH
FIS001	12/2/2012 1:21	N/A	N/A	UNKN	UNKN	Loud and low	SE4
FIS001	12/2/2012 10:21	DEP	UNKN	ABW1011	747-8	Loud and low	SE4
PRE002	12/2/2012 17:45	N/A	N/A	UNKN	UNKN	Loud and low	OTH
SPI001	12/3/2012 22:30	ARR	16R	SWA8506	737-300		NW1
KUL001	12/3/2012 22:55	DEP	16R	SWA8507	737-300		NE1
ASH001	12/4/2012 2:46	DEP	16R	GTI4532	747-LCF	Early morning flight	NW1
RAP001	12/4/2012 2:50						NW3
STE019	12/4/2012 2:50						NW4
FAR007	12/4/2012 2:52						NW3
HAY001	12/4/2012 3:00						SE4
GUS002	12/4/2012 3:00						SW3
LEE004	12/4/2012 5:54	ARR	16R	GTI4352	747-LCF		NW1
FIS001	12/4/2012 8:41	DEP	16R	HZATR	737-900	Low	SE4
SPI001	12/4/2012 17:09	ARR	16R	GTI4351	747-LCF		NW1
GRI009	12/5/2012 17:50	T/G	16R	AMF1120	BE99		OTH
SAW001	12/7/2012 0:00	N/A	N/A	N/A	N/A	General complaint: frequency	SE4
FIS001	12/7/2012 9:10	DEP	16R	BOE161	777-300	Low	SE4
FIS001	12/7/2012 9:20	DEP	16R	BOE161	777-300	Low and loud also @ 09:36	SE4
FIS001	12/7/2012 11:52	ARR	34L	BOE161	777-300	Low and loud	SE4
SAW001	12/8/2012 0:00	ARR	34L	N683EF	Lear 35	Too low	SE4
SMI017	12/8/2012 7:32	TRANSITING	N/A	N180TN	C-180		NE4
KIR003	12/8/2012 10:00	ARR	16R	N955H	CL30		NW1
FIS001	12/8/2012 10:49	DEP	16R	BOE289	787-8	Low and loud	SE4
FIS001	12/8/2012 11:40	DEP	16R	GTI4512	747-LCF	Low and loud	SE4
FRA003	12/8/2012 14:28	ARR	16R	BOE008	767-300		OTH
JOH016	12/8/2012 22:00	DEP	34L	N8750R	Helo		NW4

Caller Code	Date/Time	Operation	Runway	Flight ID	Aircraft Type	Comments	Community
HEI006	12/10/2012 22:10	DEP	16R	GTI4532	747-LCF		NW3
RAP001	12/10/2012 22:10						NW3
RAY002	12/13/2012 10:30	DEP	16R	N808TP	C-172		OTH
FIS001	12/14/2012 12:34	ARR	16R	BOE628	737-800	Low and loud	SE4
FIS001	12/14/2012 12:44	ARR	16R	BOE628	737-800	Low and loud	SE4
BEY001	12/15/2012 12:00	ARR	16R	N10615	C-150	Pollution concerns from aircraft and engine runs	NW1
FIS001	12/16/2012 16:01	DEP	16R	BOE522	747-8	and low	SE4
RAP001	12/18/2012 5:00	DEP	16R	GTI4512	747-LCF		NW3
STE019	12/18/2012 5:04						NW4
WOH002	12/18/2012 5:05						SE1
ADA006	12/22/2012 7:00						OTH
HAL012	12/23/2012 10:00	DEP	16L	CAP4600	C-172		NW4
HAL012	12/27/2012 19:00	TRANSITING	N/A	N891SF	SR22		NW4
FIS001	12/27/2012 22:56	ARR	34L	SWA8507	737-300		SE4
HAL012	12/28/2012 15:15	TRANSITING	N/A	N69F	Bell-407		NW4