

MONTHLY OPERATIONS & NOISE SUMMARY

Paine Field Airport

January 2013

ONLINE AT WWW.PAINEFIELD.COM

NOISE COMMENT FORM: [HTTP://WWW.PAINEFIELD.COM/NOISE/NOISEFORM.HTML](http://WWW.PAINEFIELD.COM/NOISE/NOISEFORM.HTML)

NOISE SUMMARY REPORTS: [HTTP://WWW.PAINEFIELD.COM/NOISE/NOISESUMMARY.HTML](http://WWW.PAINEFIELD.COM/NOISE/NOISESUMMARY.HTML)

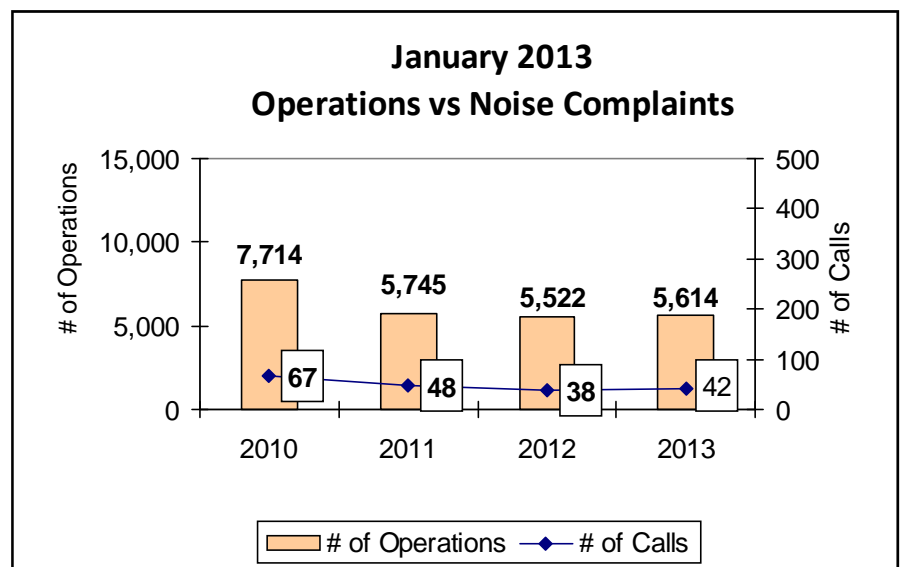
PAINE FIELD HAPPENINGS: [HTTP://WWW.PAINEFIELD.COM/HAPPENINGS/HAPPENINGS.HTML](http://WWW.PAINEFIELD.COM/HAPPENINGS/HAPPENINGS.HTML)

Noise Brief:

During January 2013, the airport office received 42 noise related calls and emails from individuals in the surrounding communities. 2 of the calls were regarding engine runs. 1 caller accounted for 40.5% of all noise complaints this month.

Complaints:

Many factors contribute to the amount of complaints received each month and by how many people. Complaint totals are rarely consistent due to factors ranging from one unusual flight event that generates multiple complaints from a large group of people, an overcast day which blocks in sound, or perhaps a new homeowner that didn't notice the flight paths before the purchase of the property.



During January 2013, the FAA Paine Field Air Traffic Control Tower recorded 5,614 flight operations. This is a 1.6% decrease in operations from January 2012, which had 5,522 operations.

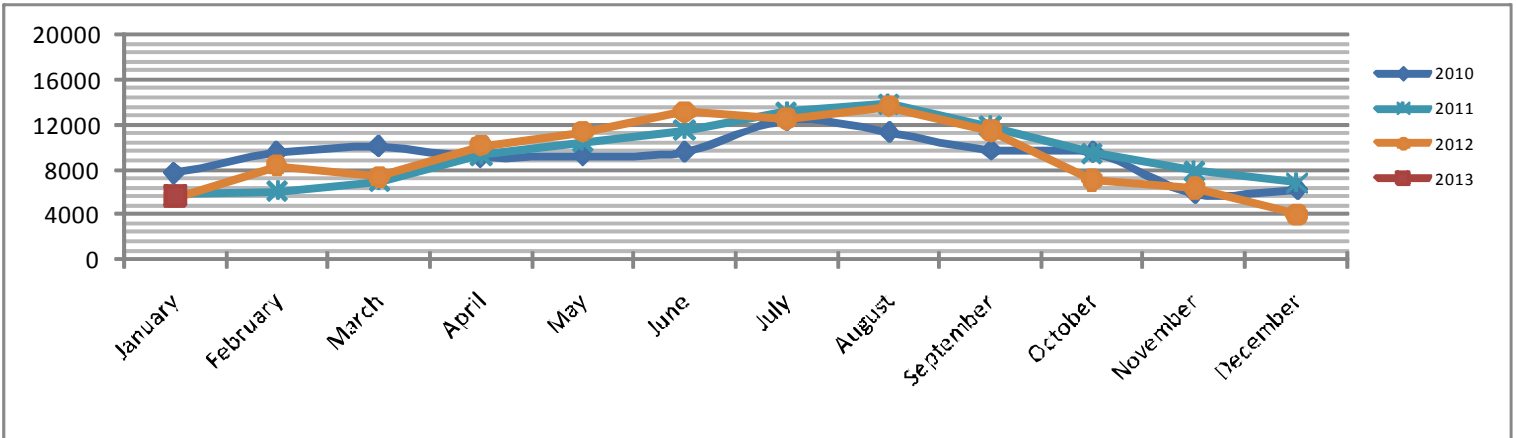
The four-year average number of flight operations for the month of January is 6,149. Total operations for

PAINE FIELD AIRPORT • 3220 100TH ST SW • EVERETT, WA 98204

NOISE HOTLINE: 425-353-2110 x1

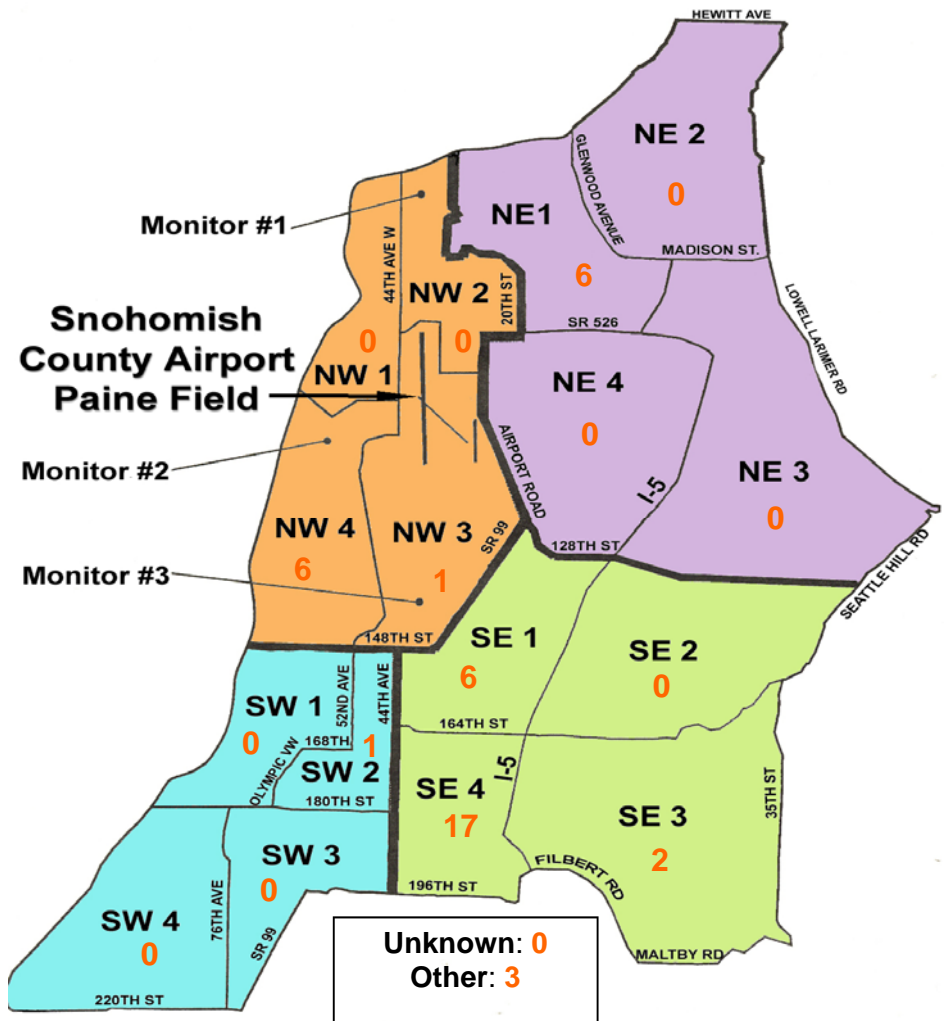
For further information, please call Airport Operations at 425-388-5125

Monthly Operations Levels 2010—2013



Paine Field Community Quadrants

The graphic to the right depicts Paine Field’s 16 noise quadrants. The red numbers within each quadrant represent how many calls were made from that quadrant in the month of January. “Unknown” represents complaints where the caller’s quadrant was not identified. “Other” represents complaints from outside the four major quadrants.



Caller Complaints

Noise complaints are received via telephone hotline or through the airport web page noise complaint form.

Upon receipt, complaints are investigated. Airport staff uses the AIRSCENE data and other sources to help identify which operation generated the noise complaint. The FAA retains radar data for 3 days before providing it to the airport's AIRSCENE noise monitoring system.

The aircraft operator is then notified of the complaint and made aware of the airport's noise abatement program. Callers who specifically request to be contacted are called back.

Since FAA operations data is not released until the third week of the following month, the monthly

summary report is posted online at www.paineairport.com the fourth week of the following month.

Caller Identification Codes are listed in the first column of the complaint table. You should be able to identify yourself by the first 3 letters of your last name and the date and time you called in. If you are having trouble identifying your new code, please call the airport office and we will look you up.

First time callers will receive a one-time hard copy mailing of this monthly noise summary. After the initial mailing, future reports will be posted online at the websites listed on the front of this report. The aircraft operations listed on this page (and next) are presumed to have originated or completed their flights at Paine Field.

Caller Code	Date/Time	Operation	Runway	Flight ID	Aircraft Type	Comments	Community
NEL006	1/5/2013 8:00	DEP	16R	24539	C172		NE1
KUL001	1/6/2013 23:11	DEP	16R	SWA8507	737-400		NE1
WOH002	1/7/2013 4:50	DEP	16R	DAL9937	757-300		SE1
KUL001	1/7/2013 10:36	DEP	16R	MSFAM	MD-80		NE1
SMU001	1/10/2013 14:48	ARR	16R	EAGL30	P3		NW4
FIS001	1/11/2013 13:15	DEP	16R	GTI4512	747-LCF	Low	SE4
STE019	1/12/2013 1:55	DEP	16R	GTI4532	747-LCF		NW4
STE019	1/13/2013 3:14	TRANSITING	N/A	ALFT6	EC35	Small propeller	NW4
FIS001	1/14/2013 19:47	DEP	16R	GTI4542	747-LCF	Low	SE4
EST002	1/16/2013 5:42	DEP	34R	GTI4512	747-LCF		NE1
WOH002	1/16/2013 11:25	T/G	34R	5512E	C172		SE1
WOH002	1/16/2013 11:40	ARR	34L	SWA8605	737-400		SE1
WOH002	1/16/2013 11:57	DEP	16R	SWA8511	737-400		SE1
WOH002	1/17/2013 0:07	DEP	16R	SWA8507	737		SE1
HOL010	1/17/2013 6:15	DEP	16R	GTI4542	747-LCF		SE1
FIS001	1/17/2013 11:13	DEP	16R	BOE263	777-300	Low	SE4
PAK002	1/17/2013 12:08	DEP	16R	N540BA	CL60		NW4
KUL001	1/17/2013 22:27	ARR	16R	N777EH	H25B		NE1
FIS001	1/18/2013 11:21	TRANSITING	16R	BOE138	777-200	Low	SE4
FIS001	1/20/2013 13:46	DEP	16R	GTI4516	747-LCF	Low	SE4
FIS001	1/20/2013 14:19	ARR	34L	BOE263	777-300	Loud	SE4
FIS001	1/20/2013 14:31	ARR	34L	BOE205	777-300	Low	SE4
FIS001	1/20/2013 14:33	ARR	34L	BOE205	777-200	Low	SE4
FIS001	1/20/2013 15:13	ARR	34L	SWA8700	737-800	Low	SE4
FIS001	1/20/2013 15:56	DEP	16R	DOGG016	E6	Loud	SE4
FIS001	1/20/2013 16:05	A	34L	BOE138	777-300	Loud	SE4

Caller Code	Date/Time	Operation	Runway	Flight ID	Aircraft Type	Comments	Community
FIS001	1/20/2013 18:00	DEP	16R	SWA8503	737-700	Loud	SE4
FIS004	1/23/2013 3:00	ARR	34L	SWA8502	737-400		NE1
BUD001	1/23/2013 19:37	DEP	16R	GTI4512	747-LCF	Loud	NW3
FIS001	1/23/2013 19:38						SE4
GIB003	1/24/2013 2:00	DEP	16R	BOE524	747-8		NW4
FIS001	1/25/2013 2:31	DEP	16R	GTI4532	747-LCF	Low	SE4
FRA003	1/25/2013 12:36	TRANSITING	N/A	BOE604	747-8		OTH
HIN002	1/29/2013 3:00	DEP	16R	GTI4532	747-LCF		SE3
BAD003	1/29/2013 3:00						SE4
MCC012	1/29/2013 3:08						NW4
HIN002	1/29/2013 3:10						SE3
FRA003	1/29/2013 11:45	ARR	16R	BOE501	747-8		OTH
FIS001	1/29/2013 13:19	DEP	16R	GTI4512	747-LCF	Low	SE4
EDW004	1/30/2013 6:31	DEP	16R	2094L	L35		SW2
STE021	1/30/2013 6:31						OTH
FIS001	1/31/2013 12:22	DEP	16R	UAE777	777-300	Low	SE4