

MONTHLY OPERATIONS & NOISE SUMMARY

Paine Field Airport

April 2013

ONLINE AT WWW.PAINEFIELD.COM

NOISE COMMENT FORM: [HTTP://WWW.PAINEFIELD.COM/NOISEFORM.ASPX](http://WWW.PAINEFIELD.COM/NOISEFORM.ASPX)

NOISE SUMMARY REPORTS: [HTTP://WWW.PAINEFIELD.COM/NOISE/NOISESUMMARY.HTML](http://WWW.PAINEFIELD.COM/NOISE/NOISESUMMARY.HTML)

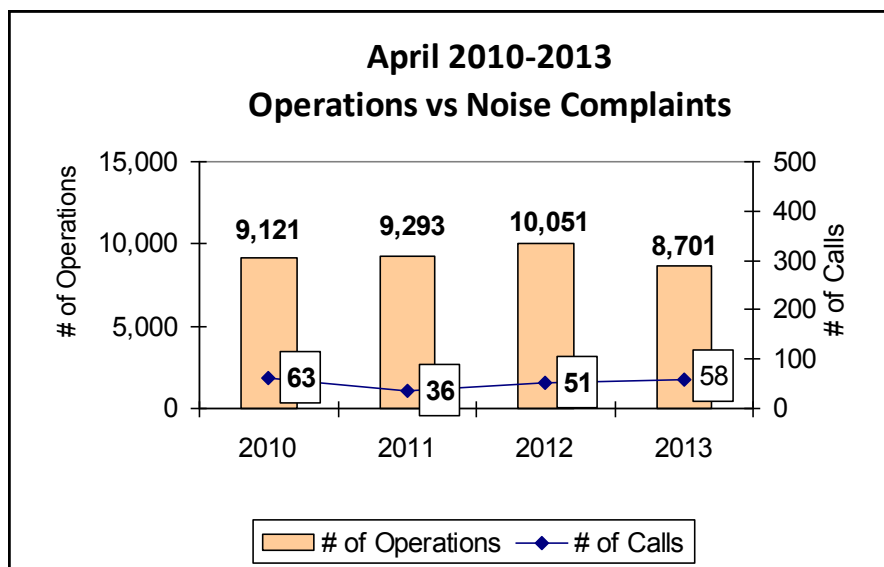
PAINE FIELD HAPPENINGS: [HTTP://WWW.PAINEFIELD.COM/HAPPENINGS/HAPPENINGS.HTML](http://WWW.PAINEFIELD.COM/HAPPENINGS/HAPPENINGS.HTML)

Noise Brief:

During April 2013, the airport office received 58 noise related calls and emails from individuals in the surrounding communities. 1 call was regarding engine runs and 1 caller accounted for 29% of all noise complaints this month.

During April 2013, the FAA Paine Field Air Traffic Control Tower recorded 8,701 flight operations. This is a 13.4% decrease in operations from April 2012, which had 10,051 operations.

The four-year average number of flight operations for the month of April is 9,292. Total operations for April 2013 is 6.35% below the four-year average.



Complaints:

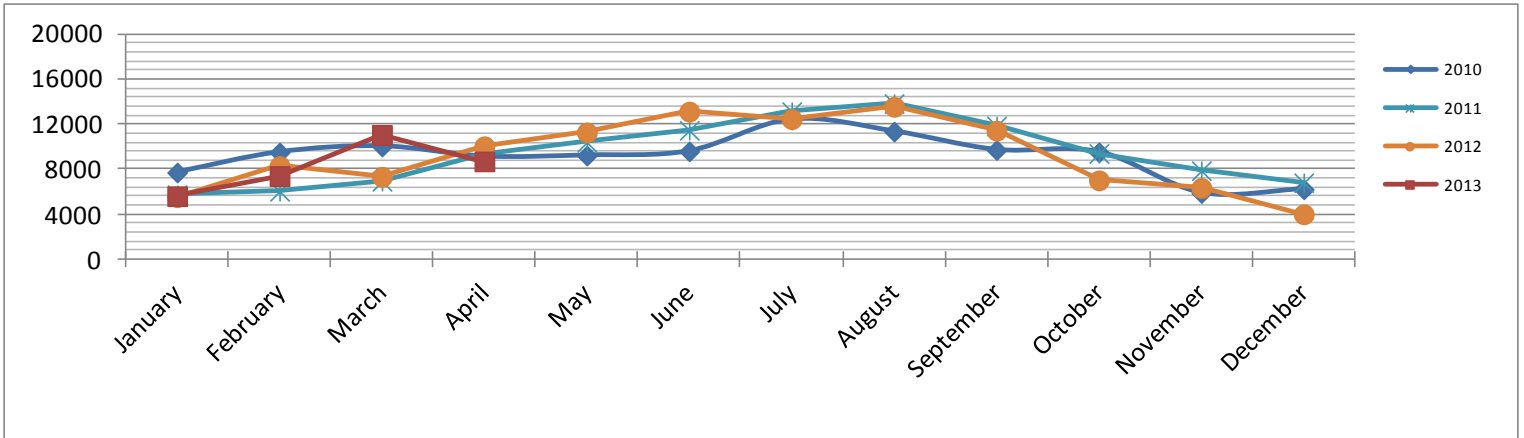
Many factors contribute to the amount of complaints received each month and by how many people. Complaint totals are rarely consistent due to factors ranging from one unusual flight event that generates multiple complaints from a large group of people, an overcast day which blocks in sound, or perhaps a new homeowner that didn't notice the flight paths before the purchase of the property.

PAINE FIELD AIRPORT • 3220 100TH ST SW • EVERETT, WA 98204

NOISE HOTLINE: 425-353-2110 x1

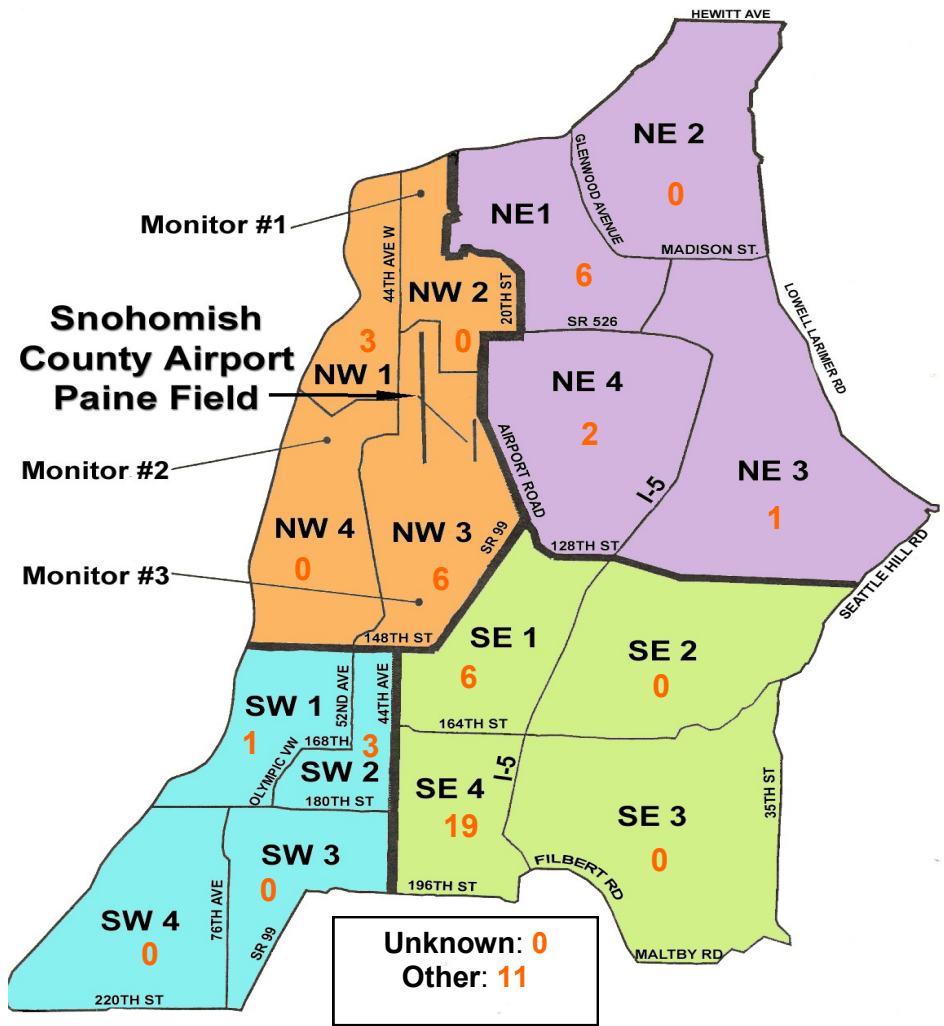
For further information, please call Airport Operations at 425-388-5125

Monthly Operations Levels 2010—2013



Paine Field Community Quadrants

The graphic to the right depicts Paine Field's 16 noise quadrants. The red numbers within each quadrant represent how many calls were made from that quadrant in the month of April. "Unknown" represents complaints where the caller's quadrant was not identified. "Other" represents complaints from outside the four major quadrants.



Caller Complaints

Noise complaints are received via telephone hotline or through the airport web page noise complaint form.

Upon receipt, complaints are investigated. Airport staff uses the AIRSCENE data and other sources to help identify which operation generated the noise complaint. The FAA retains radar data for 3 days before providing it to the airport's AIRSCENE noise monitoring system.

The aircraft operator is then notified of the complaint and made aware of the airport's noise abatement program. Callers who specifically request to be contacted are called back.

Since FAA operations data is not released until the third week of the following month, the monthly

summary report is posted online at www.paineairport.com the fourth week of the following month.

Caller Identification Codes are listed in the first column of the complaint table. You should be able to identify yourself by the first 3 letters of your last name and the date and time you called in. If you are having trouble identifying your new code, please call the airport office and we will look you up.

First time callers will receive a one-time hard copy mailing of this monthly noise summary. After the initial mailing, future reports will be posted online at the websites listed on the front of this report. The aircraft operations listed on this page (and next) are presumed to have originated or completed their flights at Paine Field.

Caller Code	Date/Time	Operation	Runway	Flight ID	Aircraft Type	Comments	Community
FIS001	4/1/2013 8:12	D	16R	GTI4516	747-LCF	Low	SE4
EDW004	4/1/2013 14:50	D	34L	670H	SBR-1		SW2
EDW004	4/1/2013 14:55	D	34L	BOE214	777-300		SW2
SHU001	4/1/2013 16:27	D	16R	BOE274	777-300		NW3
FIS001	4/1/2013 21:59	D	16R	GTI4532	747-LCF	Low and Loud	SE4
FOS002	4/2/2013 3:20	N/A	N/A	N/A	N/A	General complaint	SW2
GRU002	4/2/2013 14:26	A	16R	GTI4356	747-LCF		OTH
YAM001	4/4/2013 3:15	D	16R	GTI4532	747-LCF		SE4
WOH002	4/4/2013 3:15						SE1
FIS001	4/5/2013 17:27	A	34L	CFS657	C208		SE4
FIS001	4/6/2013 11:10	D	16R	GTI4532	747-LCF	Low	SE4
FIS001	4/6/2013 18:32	D	16R	GTI4516	747-LCF	Low	SE4
RAP001	4/8/2013 4:00	D	16R	GTI4512	747-LCF		NW3
YAM001	4/8/2013 4:00						SE4
BUR003	4/8/2013 4:05						NW3
WOH002	4/8/2013 4:10						SE1
ALS004	4/8/2013 4:15						SW1
FRA003	4/8/2013 14:19	O	N/A	BOE993	777-300		OTH
FIS001	4/9/2013 16:06	D	16R	GTI4542	747-LCF	Low and Loud	SE4
PLI001	4/9/2013 22:25	N/A	N/A	N/A	N/A	Jet fuel smell	NW1
FIS001	4/11/2013 13:56	A	34L	GTI4356	747-LCF	Low	SE4
FRA003	4/11/2013 19:11	D	34L	GTI4512	747-LCF		OTH
WOH002	4/11/2013 22:55	A	34L	VDA2779	AN-124		SE1

Caller Code	Date/Time	Operation	Runway	Flight ID	Aircraft Type	Comments	Community
FIS001	4/14/2013 11:33	D	16R	N696SB	Falcon 2000	Low and Loud	SE4
FIS001	4/14/2013 11:45						SE4
FRA003	4/14/2013 13:04	A	16R	BOE554	747-8		OTH
FIS001	4/14/2013 16:57	A	34L	UNKNOWN	UNKN		SE4
RAP001	4/15/2013 3:30	D	16R	VDA2779	AN-124		NW3
FAR007	4/15/2013 3:34						NW3
WOH002	4/15/2013 3:35	D	16R	VDA2779	AN-124		SE1
WOH002	4/16/2013 12:55	D	16R	BOE993	777-300		SE1
MOR005	4/17/2013 2:00	D	34L	SWA8512	737-300		NW1
TUB002	4/18/2013 12:42	O	N/A	JZA92	DH8C		NE1
LAN005	4/18/2013 13:45	D	16R	N549BA	CL60		NW3
HOW009	4/20/2013 9:49	O	16R	BOE163	777-300		OTH
WIL022	4/21/2013 2:30	N/A	N/A	N/A	UNKN	Engine runs	NE4
FIS001	4/21/2013 13:36	D	16R	GTI4512	747-LCF	Low and Loud	SE4
BRE005	4/22/2013 3:23	D	34L	SWA8503	777-500		NW1
FIS001	4/22/2013 13:32	A	34L	GTI4451	747-LCF	Low	SE4
WIL022	4/23/2013 2:30	D	34L	SWA8500	737-300		NE4
BEN004	4/24/2013 2:10	D	34L	AAL9775	737-300		NW3
FIS001	4/25/2013 2:15	D	16R	GTI4542	747-LCF	Low and Loud	SE4
WOH002	4/25/2013 2:15						SE1
WAR011	4/25/2013 2:20						OTH
FIS001	4/26/2013 16:29	D	16R	AFL7607	777-W	Low	SE4
EST002	4/27/2013 6:18	D	34L	GTI4532	747-LCF		NE1
TUB002	4/27/2013 6:19						NE1
EST002	4/28/2013 6:31	D	34L	GTI4532	747-LCF		NE1
KUL001	4/28/2013 6:32						NE1
KUL001	4/29/2013 10:46	D	34L	N55LM	P28R		NE1
FIS001	4/29/2013 11:10	A	16R	DAL233	A333	Low and Loud	SE4
FIS001	4/29/2013 13:13	A	16R	BOE446	737-800	Low and Loud	SE4
HOW009	4/29/2013 20:40	A	34L	GTI4351	747-LCF	Low and Loud	OTH
HOW009	4/29/2013 21:21	A	34L	AAL9629	737-800	Low and Loud	OTH
FIS001	4/30/2013 7:17	D	16R	GTI4542	747-LCF	Low and Loud	SE4
HOW009	4/30/2013 9:40	UNKN	N/A	UNKN	UNKN	Low and Loud	OTH
STE022	4/30/2013 10:09	UNKN	N/A	UNKN	UNKN	Low and frequent	OTH
HOW009	4/30/2013 21:21	A	34L	313BH	Lear-45		OTH