

MONTHLY OPERATIONS & NOISE SUMMARY

Paine Field Airport

May 2013

ONLINE AT [HTTP://WWW.PAINEFIELD.COM](http://www.paineairport.com)

NOISE COMMENT FORM: [HTTP://WWW.PAINEFIELD.COM/NOISEFORM.ASPX](http://www.paineairport.com/noiseform.aspx)

NOISE SUMMARY REPORTS: [HTTP://WWW.PAINEFIELD.COM/NOISE/NOISESUMMARY.HTML](http://www.paineairport.com/noise/noisesummary.html)

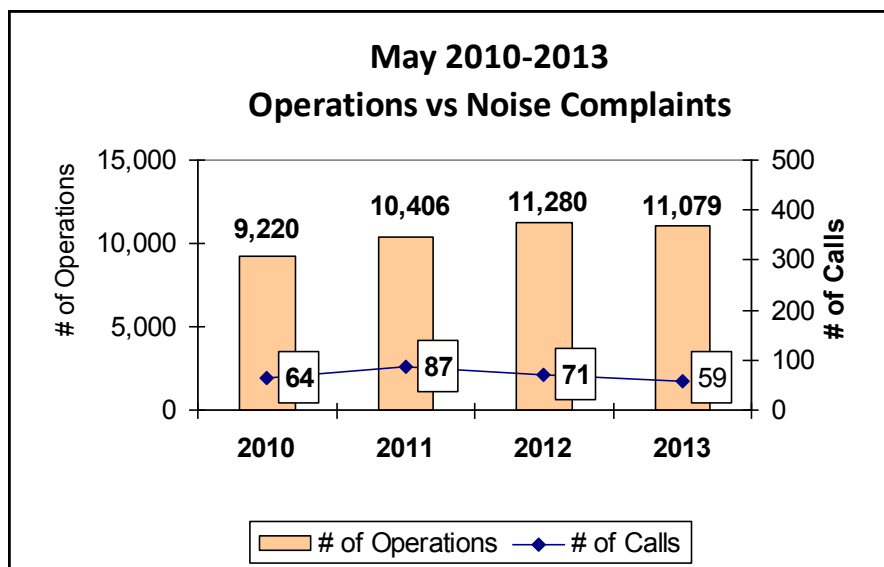
PAINE FIELD HAPPENINGS: [HTTP://WWW.PAINEFIELD.COM/HAPPENINGS/HAPPENINGS.HTML](http://www.paineairport.com/happenings/happenings.html)

Noise Brief:

During May 2013, the airport office received 59 noise related calls and emails from individuals in the surrounding communities. 0 calls were regarding engine runs and 2 callers accounted for 45% of all noise complaints this month.

During May 2013, the FAA Paine Field Air Traffic Control Tower recorded 11,079 flight operations. This is a 1.8% decrease in operations from May 2012, which had 11,280 operations.

The four-year average number of flight operations for the month of May is 10,496. Total operations for May 2013 is 5.6% above the four-year average.



Complaints:

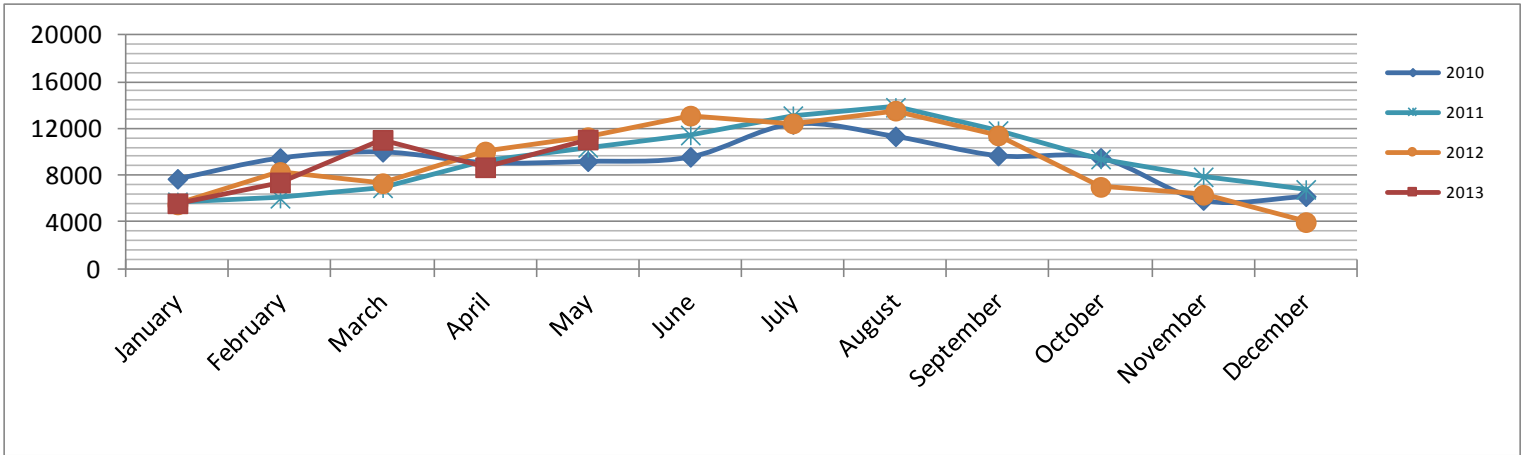
Many factors contribute to the amount of complaints received each month and by how many people. Complaint totals are rarely consistent due to factors ranging from one unusual flight event that generates multiple complaints from a large group of people, an overcast day which blocks in sound, or perhaps a new homeowner that didn't notice the flight paths before the purchase of the property.

PAINE FIELD AIRPORT • 3220 100TH ST SW • EVERETT, WA 98204

NOISE HOTLINE: 425-353-2110 x1

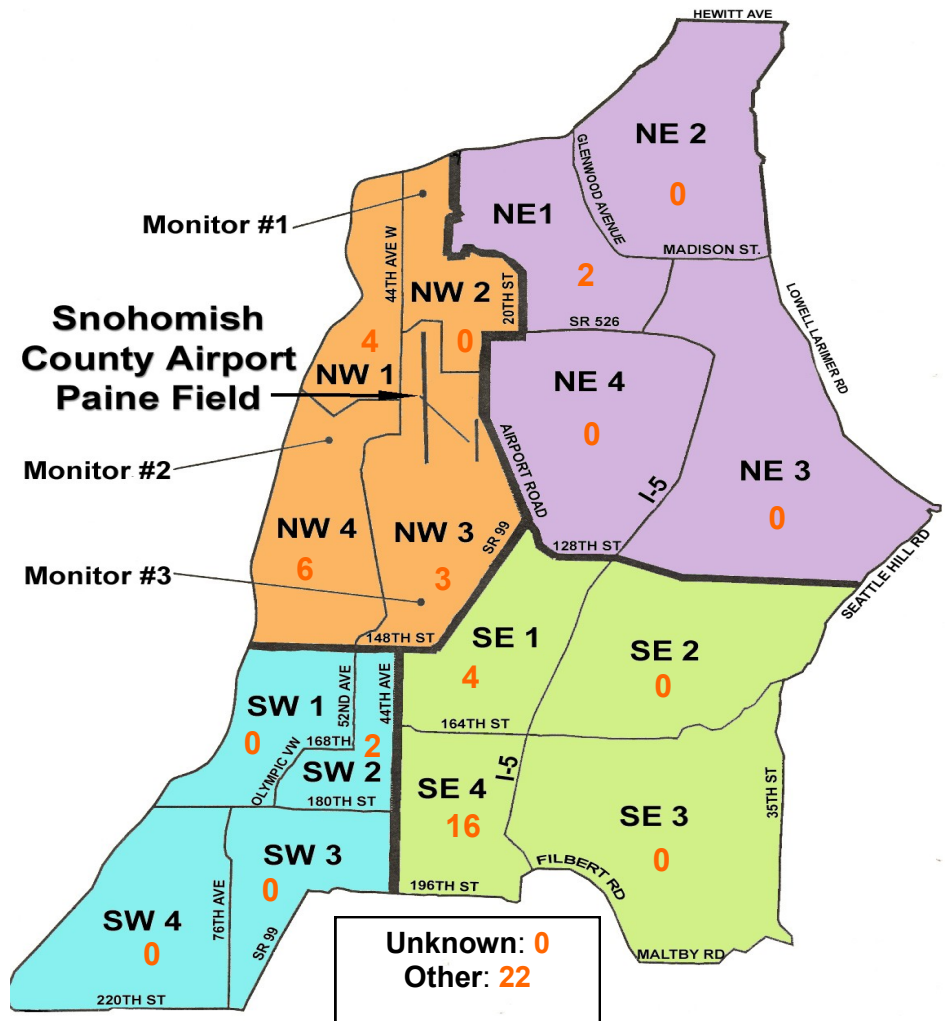
For further information, please call Airport Operations at 425-388-5125

Monthly Operations Levels 2010—2013



Paine Field Community Quadrants

The graphic to the right depicts Paine Field's 16 noise quadrants. The red numbers within each quadrant represent how many calls were made from that quadrant in the month of May. "Unknown" represents complaints where the caller's quadrant was not identified. "Other" represents complaints from outside the four major quadrants.



Caller Complaints

Noise complaints are received via telephone hotline or through the airport web page noise complaint form.

Upon receipt, complaints are investigated. Airport staff uses the AIRSCENE data and other sources to help identify which operation generated the noise complaint. The FAA retains radar data for 3 days before providing it to the airport's AIRSCENE noise monitoring system.

The aircraft operator is then notified of the complaint and made aware of the airport's noise abatement program. Callers who specifically request to be contacted are called back.

Since FAA operations data is not released until the third week of the following month, the monthly

summary report is posted online at www.paineairport.com the fourth week of the following month.

Caller Identification Codes are listed in the first column of the complaint table. You should be able to identify yourself by the first 3 letters of your last name and the date and time you called in. If you are having trouble identifying your new code, please call the airport office and we will look you up.

First time callers will receive a one-time hard copy mailing of this monthly noise summary. After the initial mailing, future reports will be posted online at the websites listed on the front of this report. The aircraft operations listed on this page (and next) are presumed to have originated or completed their flights at Paine Field.

Caller Code	Date/Time	Operation	Runway	Flight ID	Aircraft Type	Comments	Community
HOW009	5/1/2013 20:54	ARR	34L	GTI4151	747-LCF		OTH
HOW009	5/2/2013 16:06	ARR	34L	BOE554	747-8	Low and loud	OTH
FIS001	5/2/2013 16:08						SE4
EST002	5/3/2013 6:04	DEP	34L	GTI4532	747-LCF		NE1
HOW009	5/3/2013 13:17	ARR	34L	BOE133	777-300		OTH
HOW009	5/3/2013 13:44	T/G	34L	BOAR11	F18		OTH
HOW009	5/3/2013 13:45	T/G	34L	BOAR11	F18		OTH
HOW009	5/3/2013 13:47	T/G	34L	BOAR11	F18		OTH
HOW009	5/3/2013 13:48	T/G	34L	BOAR11	F18		OTH
HOW009	5/3/2013 13:57	T/G	34L	BOAR11	F18		OTH
WAL011	5/3/2013 14:10	DEP	34L	N29UB	MIG 29		NW1
EDW004	5/3/2013 14:51	ARR	34L	BOE265	777-300		SW2
DAV011	5/4/2013 16:42	ARR	34L	VDA	AN-124	Low and loud	OTH
HOW009	5/4/2013 17:57	ARR	34L	GTI4331	747-LCF	Low and loud	OTH
FIS001	5/4/2013 17:59						SE4
HOW009	5/4/2013 20:36	ARR	34L	GTI4352	747-LCF		OTH
DAV011	5/5/2013 13:42	ARR	34L	N9500D	PA-22	Low and loud	OTH
COO003	5/6/2013 10:45	DEP	34L	N7262P	PA-24	Low and loud	NW1
FIS001	5/6/2013 11:15	DEP	16R	GTI4542	747-LCF	Low and loud	SE4
FIS001	5/7/2013 20:24	ARR	34L	AAL9701	737-800	Low and loud	SE4
CAB001	5/7/2013 20:24						SE4
RAP001	5/8/2013 5:15	DEP	16R	GTI4512	747-LCF		NW3
MEL007	5/8/2013 5:19						NW3
TRI003	5/8/2013 5:20						OTH
WOH002	5/8/2013 5:20						SE1

Caller Code	Date/Time	Operation	Runway	Flight ID	Aircraft Type	Comments	Community
SMU001	5/10/2013 13:11	DEP	34L	BOE275	777-300		NW4
WOH002	5/10/2013 23:55	ARR	34L	SWA8504	737-300		SE1
RIC011	5/12/2013 15:57	DEP	16R	N88972	B-25		SE1
RIC011	5/12/2013 16:42	DEP	16R	N88972	B-25		SE1
KUL001	5/13/2013 22:48	ARR	16R	SWA8506	737-300		NE1
FIS001	5/15/2013 18:07	DEP	16R	ANA9397	787-8		SE4
FRA003	5/17/2013 9:52	N/A	N/A	UNKNOWN	UNKN		OTH
FIS001	5/17/2013 12:19	DEP	16R	UAE777	777-300	Low	SE4
MCC013	5/18/2013 12:00	N/A	N/A	N/A	N/A	General complaint	NW4
FIS001	5/18/2013 12:10	DEP	16R	GTI4532	747-LCF	Low	SE4
FIS001	5/18/2013 12:16	DEP	16R	VDA2927	AN-124	Low	SE4
DOD006	5/18/2013 14:00	T/G	16R	Vintage	UNKN	Vintage Warbirds Loud	NW4
HOW009	5/18/2013 14:50	DEP	16R	BOE513	787-8		OTH
FIS001	5/19/2013 11:25	DEP	UNK	BOE984	767-300	Low and loud	SE4
FIS001	5/19/2013 18:32	DEP	16R	BOE904	767-300	Low and loud	SE4
FIS001	5/19/2013 22:45	ARR	34L	SWA8504	737-300	and low	SE4
EDW004	5/20/2013 13:40	T/G	34L	BOE057A	757-200		SW2
FIS001	5/20/2013 16:42	DEP	16R	GTI4512	747-LCF	Loud	SE4
LEN002	5/20/2013 19:23	N/A	N/A	N/A	N/A	Gen. complaint increase	OTH
LEV001	5/21/2013 15:23	ARR	34L	BOE	787-8	Engine issue?	OTH
FIS001	5/21/2013 16:40	ARR	34L	BOE185	787-8	Loud	SE4
HOW009	5/21/2013 16:47	ARR	34L	EJM76	Hawker 800		OTH
HOW009	5/21/2013 16:50	ARR	34L	BOE307	777-300		OTH
SYR003	5/21/2013 20:15	ARR	34L	BOE265	777-300	Splash in lake after jet	NW3
HOW009	5/22/2013 15:45	DEP	16R	20416	UH-60		OTH
FIS001	5/22/2013 21:00	ARR	16R	GTI4451	747-LCF		SE4
PET013	5/22/2013 21:02						OTH
FRA003	5/22/2013 21:06						OTH
KIR003	5/23/2013 3:30	DEP	34L	GTI4512	747-LCF	Early morning flight!	NW1
LAB003	5/23/2013 3:35						NW1
MCC012	5/27/2013 21:49	DEP	16R	GTI4532	747-LCF		NW4
MCC012	5/28/2013 21:51						NW4
MCC012	5/29/2013 21:14	DEP	16R	GTI4542	747-LCF		NW4
FIS001	5/31/2013 16:49	DEP	16R	BOE013	767-300	Loud	SE4