

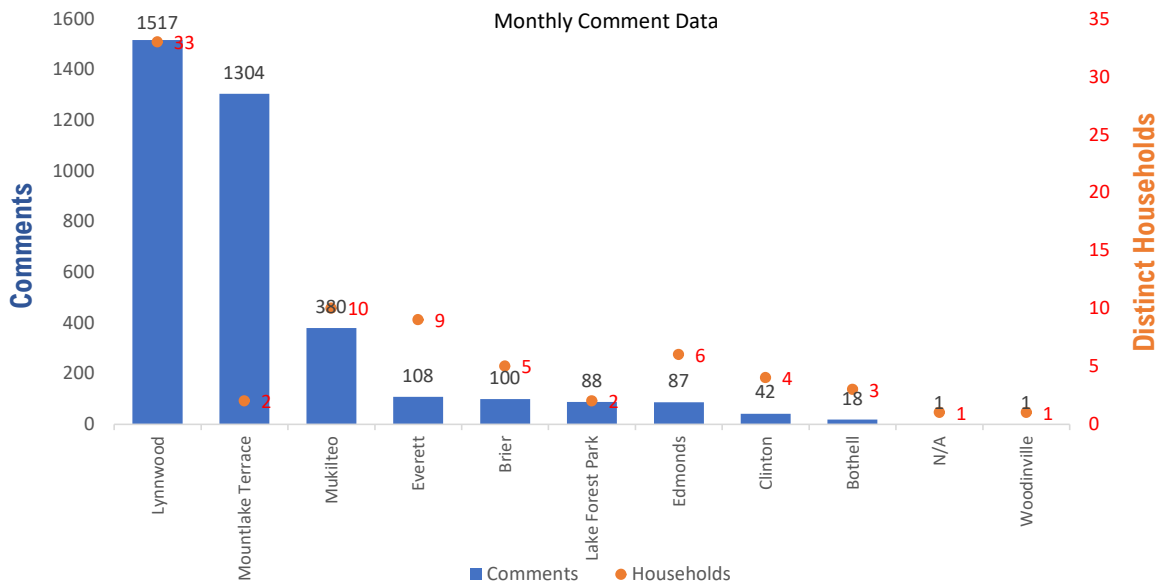


Monthly Totals & Trends

3,647	77	182	3,198 (87.7%)
Noise Comments	Distinct Households	Distinct Households YTD	Comments by top 10 households

Paine Field – Snohomish County Airport uses a variety of methods to identify, track, and reduce the impact of aircraft noise on the surrounding communities. Noise comments are managed using a third-party application that correlates each complaint with a specific flight to help airport staff identify the primary causes of noise. The airport does not have the authority to restrict aircraft operations or change aircraft flight paths. Instead, the airport relies on pilots following the published voluntary noise abatement procedures. Several factors may require a pilot to deviate from these procedures including air traffic control instruction or safety considerations. Paine Field – Snohomish County Airport is owned and operated by Snohomish County in compliance with federal aviation regulations. Because the airport operates under the guidance of federal regulations, its facilities must remain open to users of the national airspace system 24 hours a day, 365 days a year.

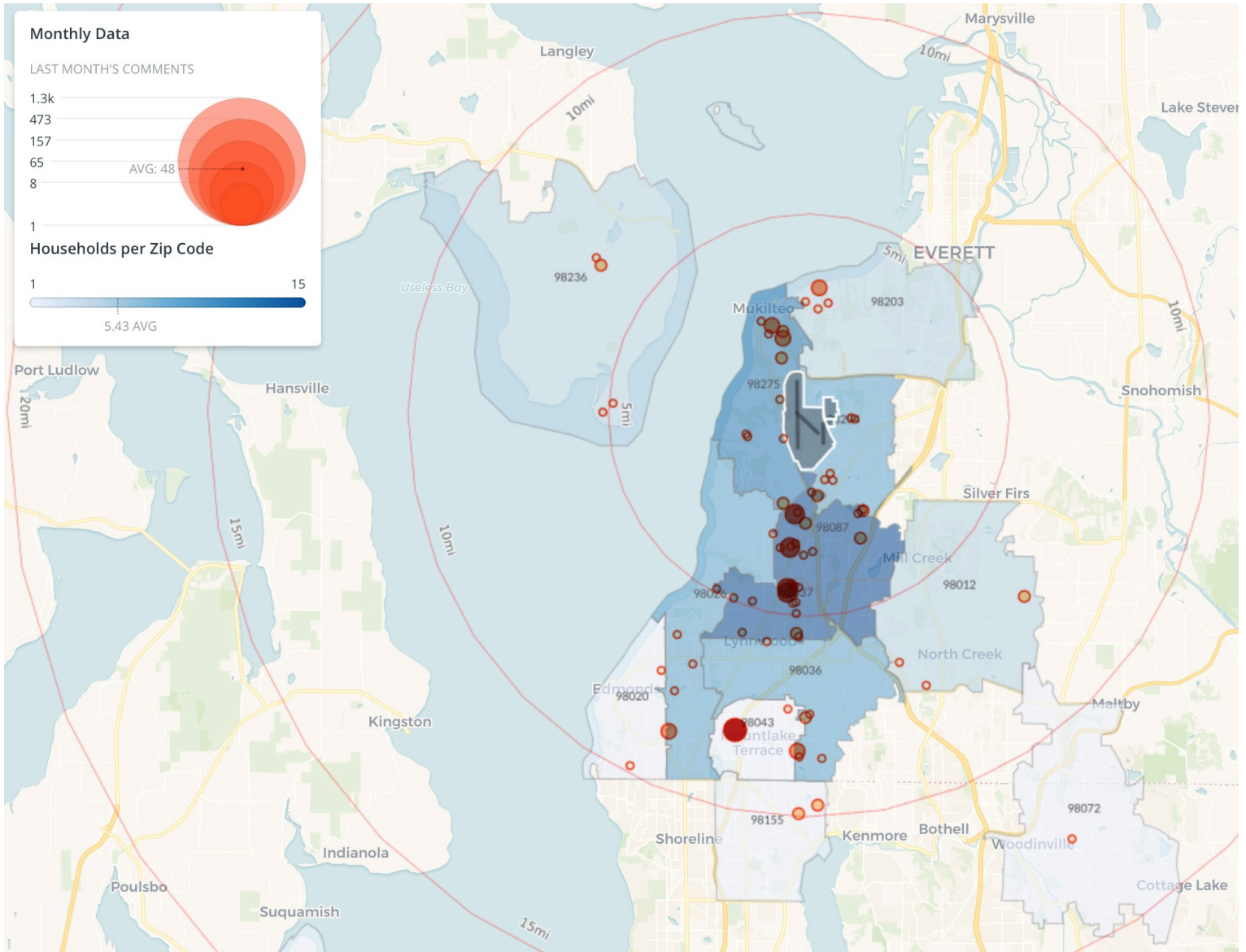
Monthly Totals & Trends: By City



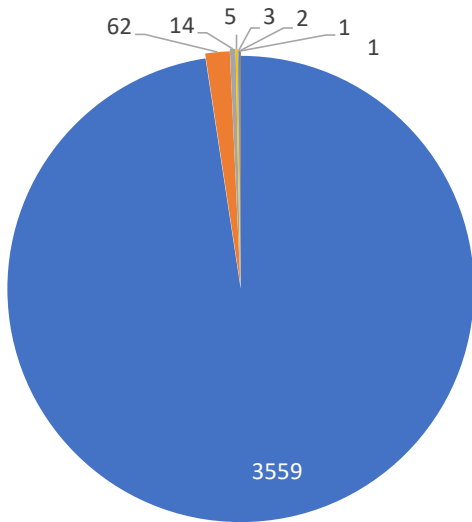
CITY	COMMENTS	DISTINCT HOUSEHOLDS	AVG COMMENTS/HOUSEHOLD
Lynnwood	1,517	33	46.0
Mountlake Terrace	1,304	2	652.0
Mukilteo	380	10	38.0
Everett	108	9	12.0
Brier	100	5	20.0
Lake Forest Park	88	2	44.0
Edmonds	87	6	14.5
Clinton	42	4	10.5
Bothell	18	3	6.0
Woodinville	1	1	1.0
Bainbridge Island	1	1	1.0
N/A	1	1	1.0
Totals	3,647	77	47.4

Noise Comment Map: By Zip Code

NOTES: Noise comments from households submitted without valid address information are not depicted on the map.

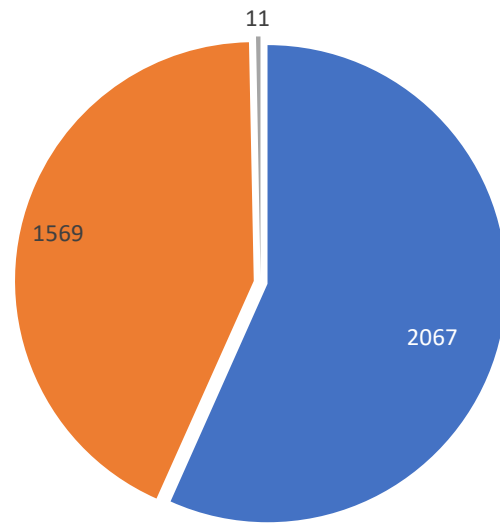


Comment Breakdown: Types & Filing Method



- Loud
- Low
- Off Course
- Unspecified
- Other
- Military
- Runup
- Helicopter

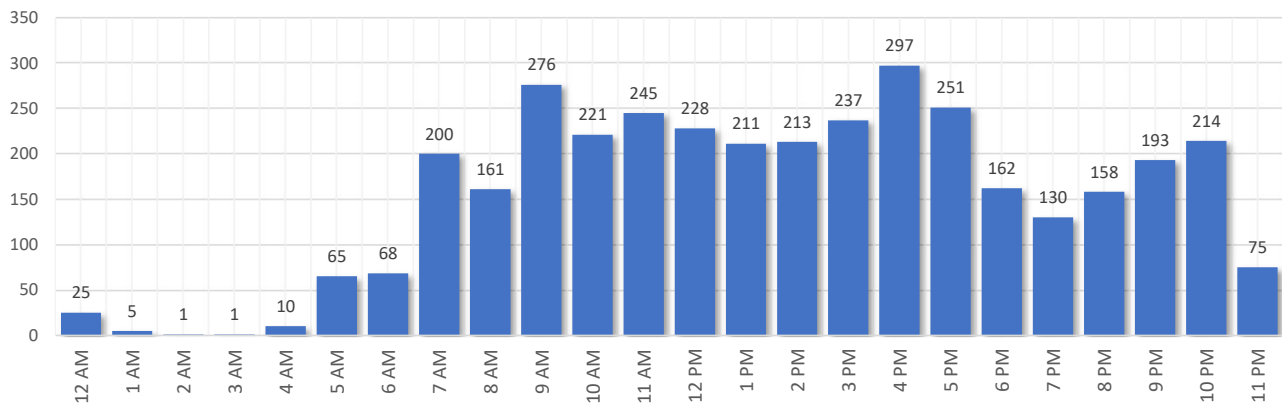
COMMENT TYPE	COMMENTS
Loud	3559
Low	62
Off Course	14
Unspecified	5
Other	3
Military	2
Runup	1
Helicopter	1



- Web App
- Webform
- Hotline

METHOD RECEIVED	COUNT
Web App	2067
Webform	1569
Hotline	11

Complaints by Time of Day

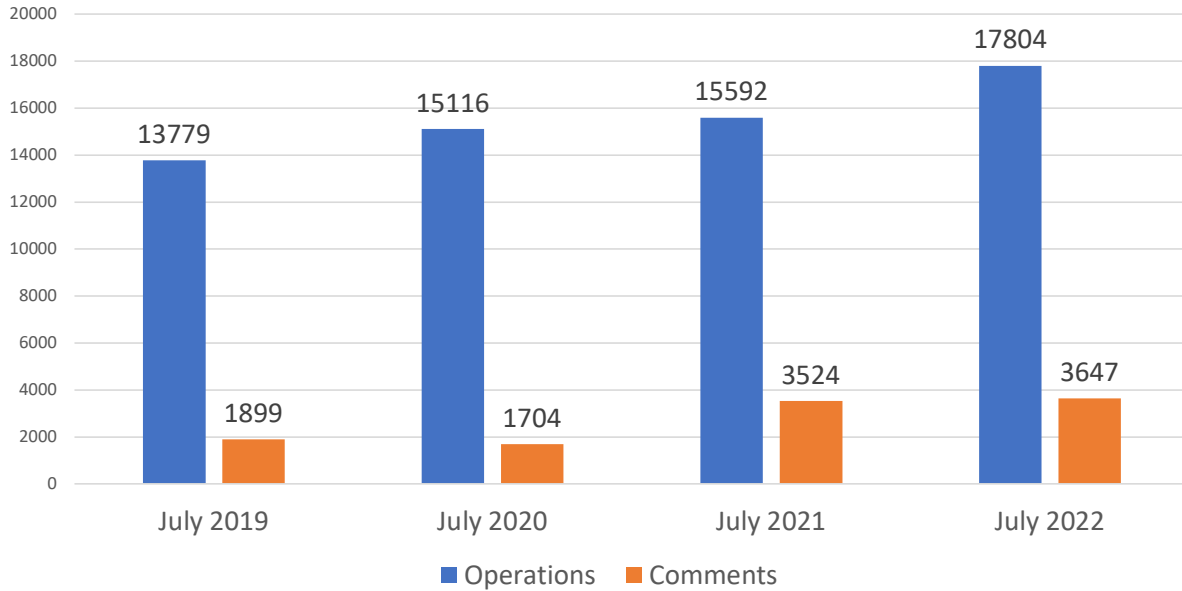




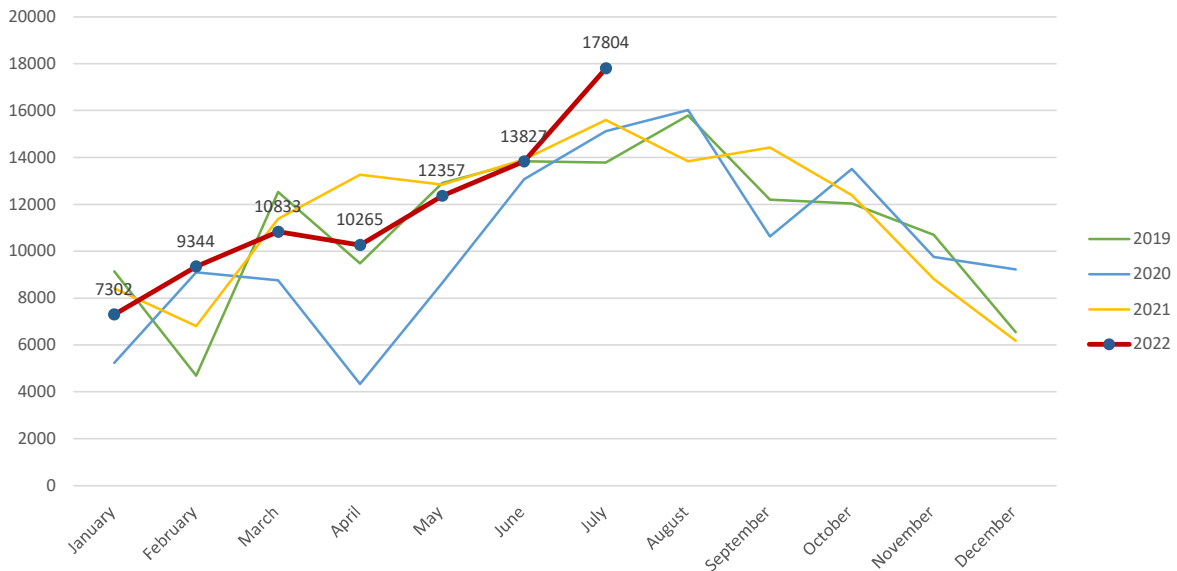
Aircraft Operations Summary:

During July 2022, the Paine Field Air Traffic Control Tower reported 17804 flight operations. This is a 14.1% increase in operations compared to July 2021 which had 15592 operations. The four-year average for July is 15572 flight operations. Total operations for July were 14.3% above the 4-year average.

Monthly Operations VS Noise Comments



Monthly Operations Four Year Data



Paine Field Website: www.paineairport.com
 Noise Abatement Procedures: www.paineairport.com/159/Noise-Abatement-Procedures
 Paine Field Noise FAQ: www.paineairport.com/215/Noise-FAQs
 To submit a noise comment online: www.planenoise.com/kpae
 To submit a noise comment by phone: (425) 284-0500