

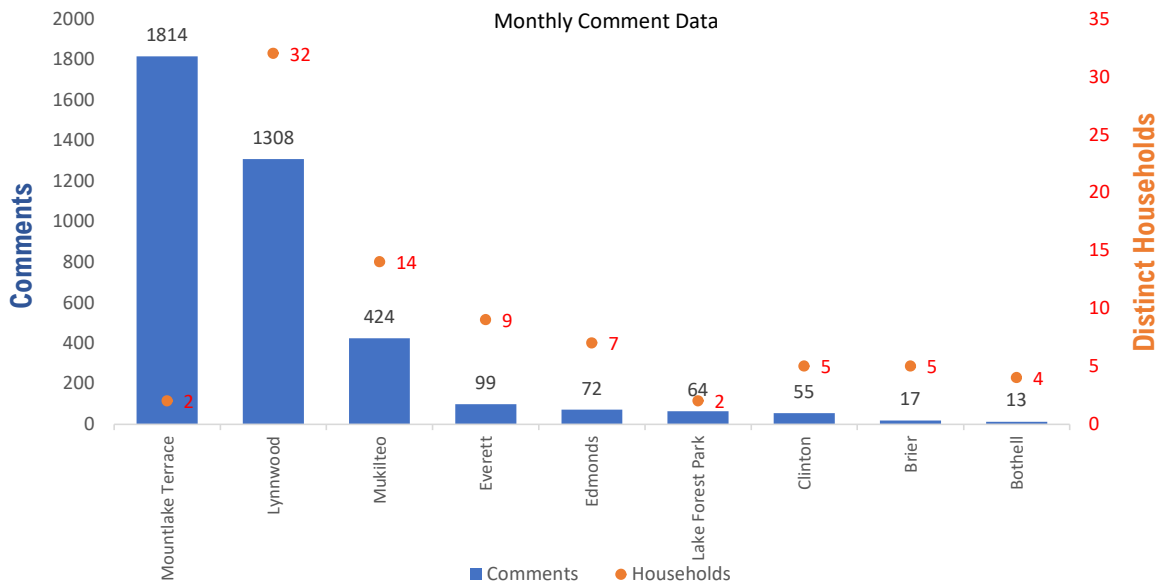


Monthly Totals & Trends

3,866
Noise Comments
80
Distinct Households
199
Distinct Households YTD
3,466 (89.7%)
Comments by top 10 households

Paine Field – Snohomish County Airport uses a variety of methods to identify, track, and reduce the impact of aircraft noise on the surrounding communities. Noise comments are managed using a third-party application that correlates each complaint with a specific flight to help airport staff identify the primary causes of noise. The airport does not have the authority to restrict aircraft operations or change aircraft flight paths. Instead, the airport relies on pilots following the published voluntary noise abatement procedures. Several factors may require a pilot to deviate from these procedures including air traffic control instruction or safety considerations. Paine Field – Snohomish County Airport is owned and operated by Snohomish County in compliance with federal aviation regulations. Because the airport operates under the guidance of federal regulations, its facilities must remain open to users of the national airspace system 24 hours a day, 365 days a year.

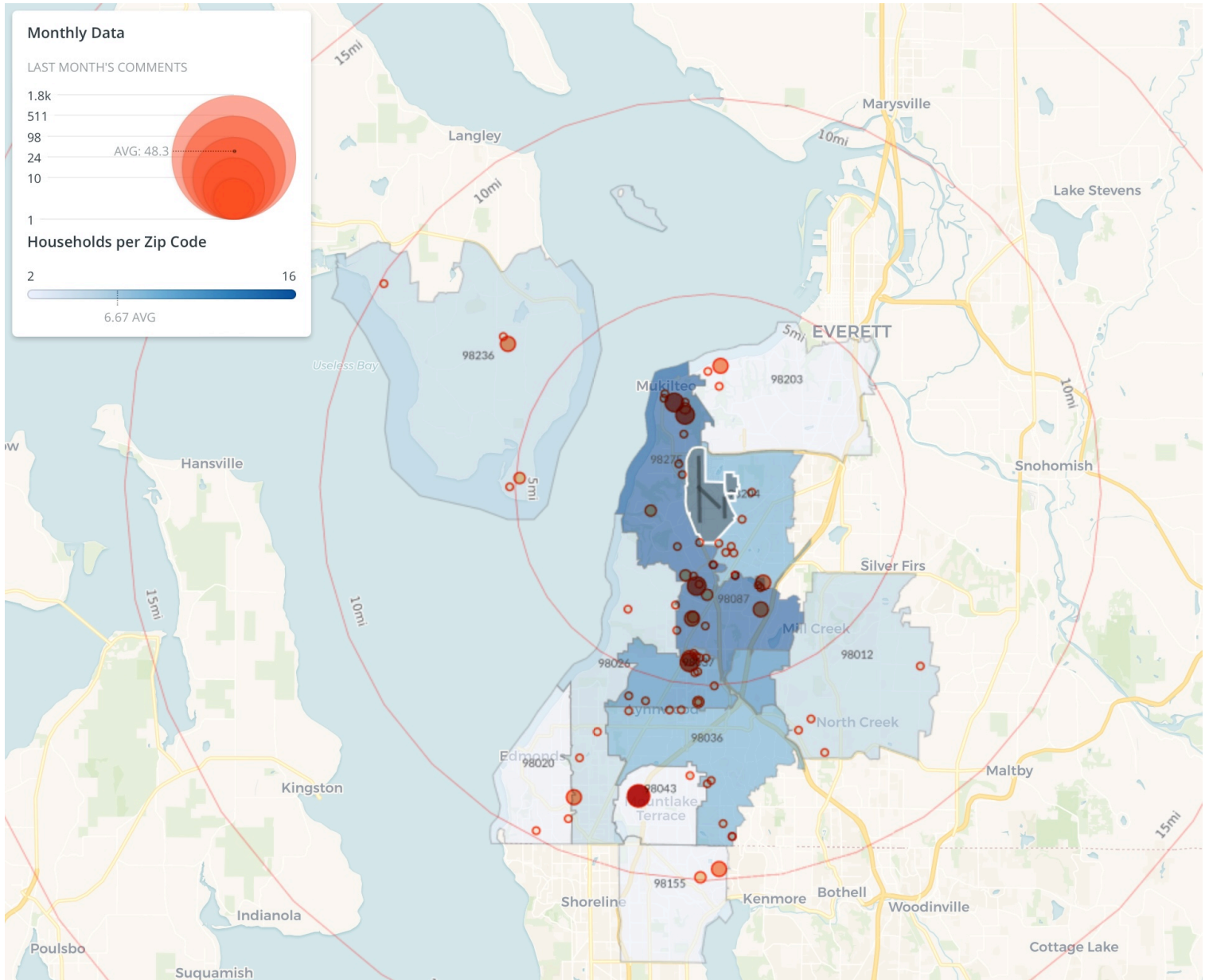
Monthly Totals & Trends: By City



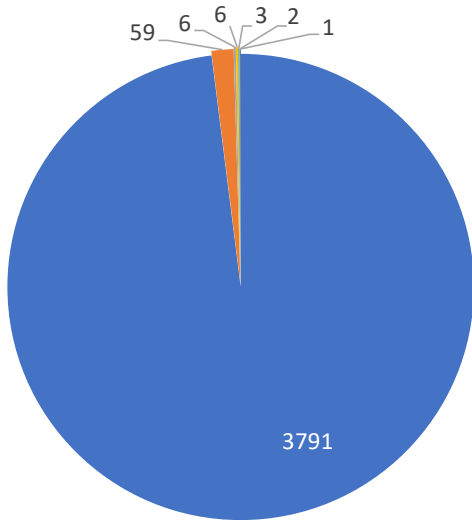
CITY	COMMENTS	DISTINCT HOUSEHOLDS	AVG COMMENTS/HOUSEHOLD
Mountlake Terrace	1,814	2	907.0
Lynnwood	1,308	32	40.9
Mukilteo	424	14	30.3
Everett	99	9	11.0
Edmonds	72	7	10.3
Lake Forest Park	64	2	32.0
Clinton	55	5	11.0
Brier	17	5	3.4
Bothell	13	4	3.3
Totals	3,866	80	48.3

Noise Comment Map: By Zip Code

NOTES: Noise comments from households submitted without valid address information are not depicted on the map.

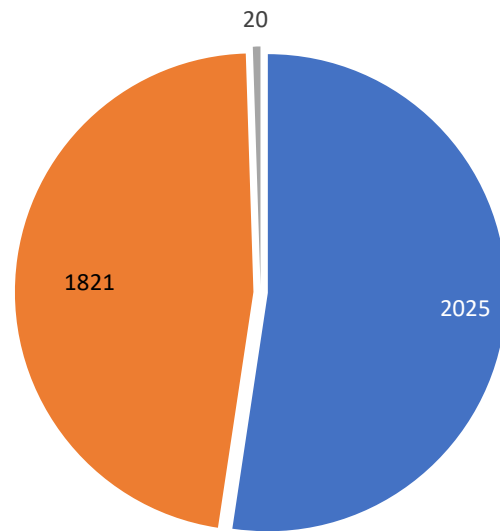


Comment Breakdown: Types & Filing Method



- Loud
- Low
- Off Course
- Unspecified
- Helicopter
- Other
- Military

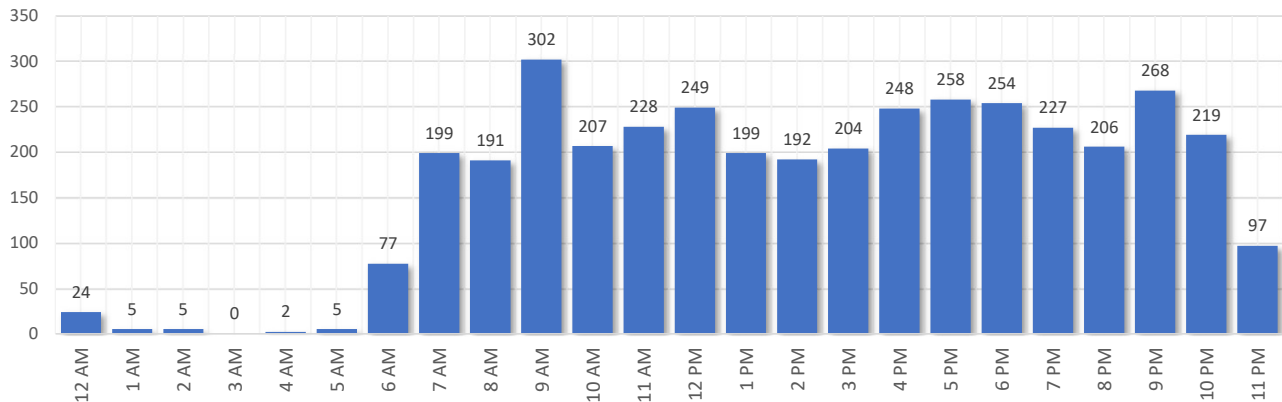
COMMENT TYPE	COMMENTS
Loud	3791
Low	59
Off Course	6
Unspecified	6
Helicopter	3
Other	2
Military	1



- Webform
- Web App
- Hotline

METHOD RECEIVED	COUNT
Webform	2025
Web App	1821
Hotline	20

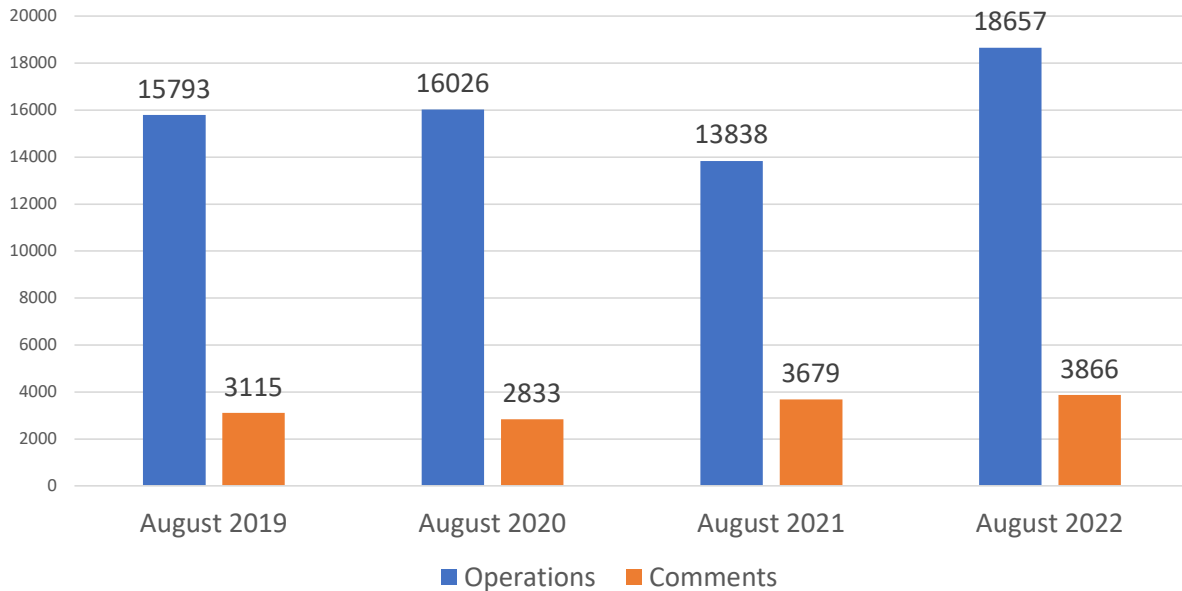
Complaints by Time of Day



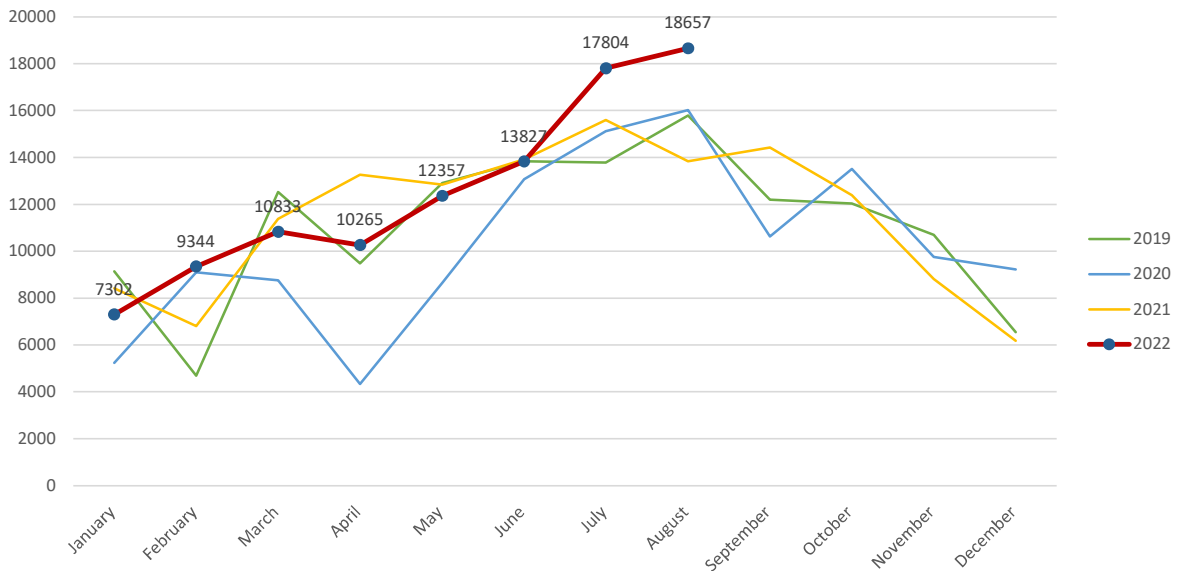
Aircraft Operations Summary:

During August 2022, the Paine Field Air Traffic Control Tower reported 18657 flight operations. This is a 34.8% increase in operations compared to August 2021 which had 13838 operations. The four-year average for August is 16078 flight operations. Total operations for August were 16% above the 4-year average.

Monthly Operations VS Noise Comments



Monthly Operations Four Year Data



Paine Field Website: www.paineairport.com
 Noise Abatement Procedures: www.paineairport.com/159/Noise-Abatement-Procedures
 Paine Field Noise FAQ: www.paineairport.com/215/Noise-FAQs
 To submit a noise comment online: www.planenoise.com/kpae
 To submit a noise comment by phone: (425) 284-0500