

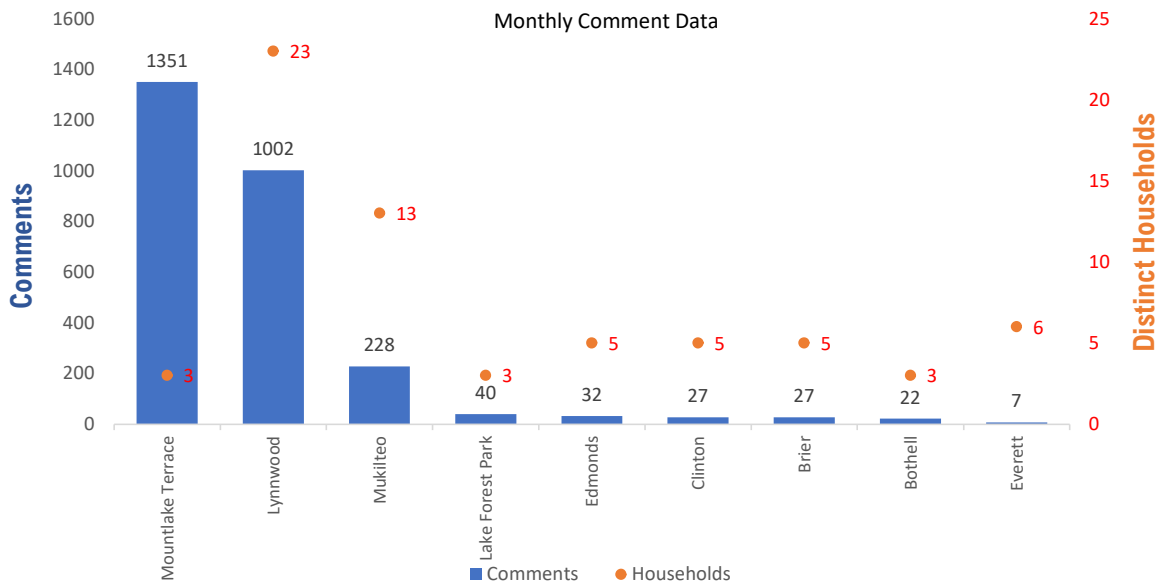


## Monthly Totals & Trends

**2,736**  
Noise Comments
**66**  
Distinct Households
**210**  
Distinct Households YTD
**2,520 (92.1%)**  
Comments by top 10 households

Paine Field – Snohomish County Airport uses a variety of methods to identify, track, and reduce the impact of aircraft noise on the surrounding communities. Noise comments are managed using a third-party application that correlates each complaint with a specific flight to help airport staff identify the primary causes of noise. The airport does not have the authority to restrict aircraft operations or change aircraft flight paths. Instead, the airport relies on pilots following the published voluntary noise abatement procedures. Several factors may require a pilot to deviate from these procedures including air traffic control instruction or safety considerations. Paine Field – Snohomish County Airport is owned and operated by Snohomish County in compliance with federal aviation regulations. Because the airport operates under the guidance of federal regulations, its facilities must remain open to users of the national airspace system 24 hours a day, 365 days a year.

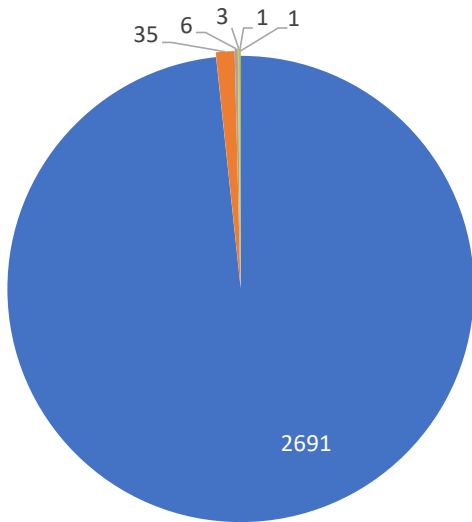
### Monthly Totals & Trends: By City



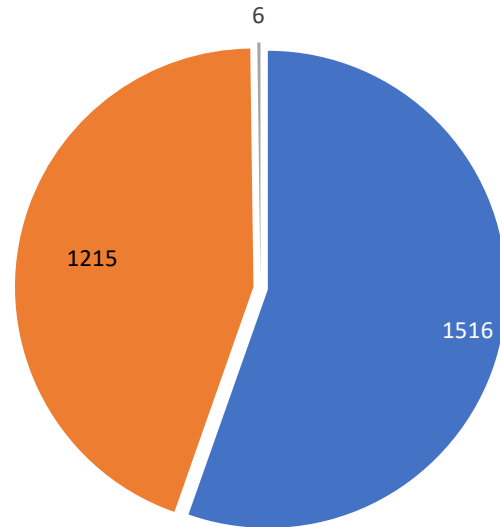
CITY	COMMENTS	DISTINCT HOUSEHOLDS	AVG COMMENTS/ HOUSEHOLD
Mountlake Terrace	1,351	3	450.3
Lynnwood	1,002	23	43.6
Mukilteo	228	13	17.5
Lake Forest Park	40	3	13.3
Edmonds	32	5	6.4
Brier	27	5	5.4
Clinton	27	5	5.4
Bothell	22	3	7.3
Everett	7	6	1.2
<b>Totals</b>	<b>2,736</b>	<b>66</b>	<b>41.5</b>



## Comment Breakdown: Types & Filing Method



■ Loud ■ Low ■ Off Course ■ Unspecified ■ Helicopter ■ Other

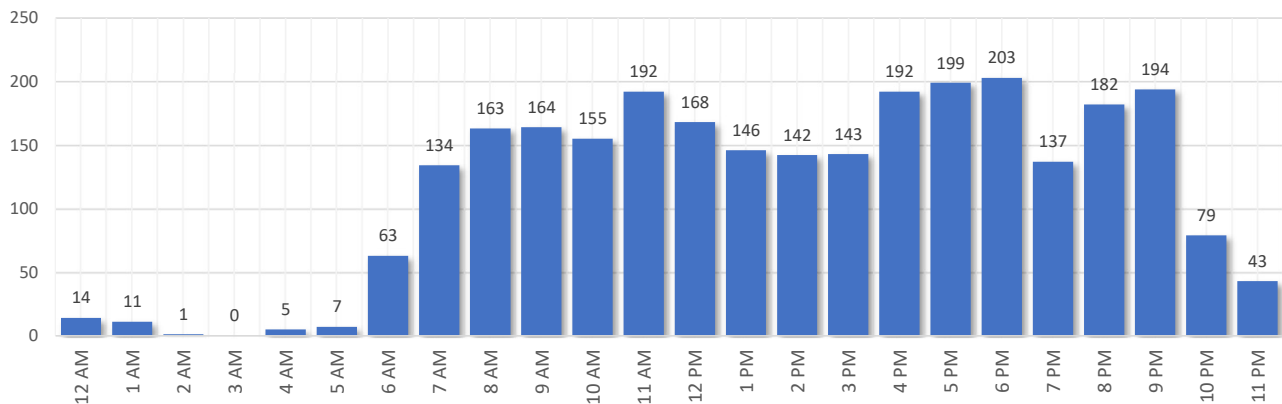


■ Webform ■ Web App ■ Hotline

COMMENT TYPE	COMMENTS
Loud	2691
Low	35
Off Course	6
Unspecified	3
Helicopter	1
Other	1

METHOD RECEIVED	COUNT
Webform	1516
Web App	1215
Hotline	6

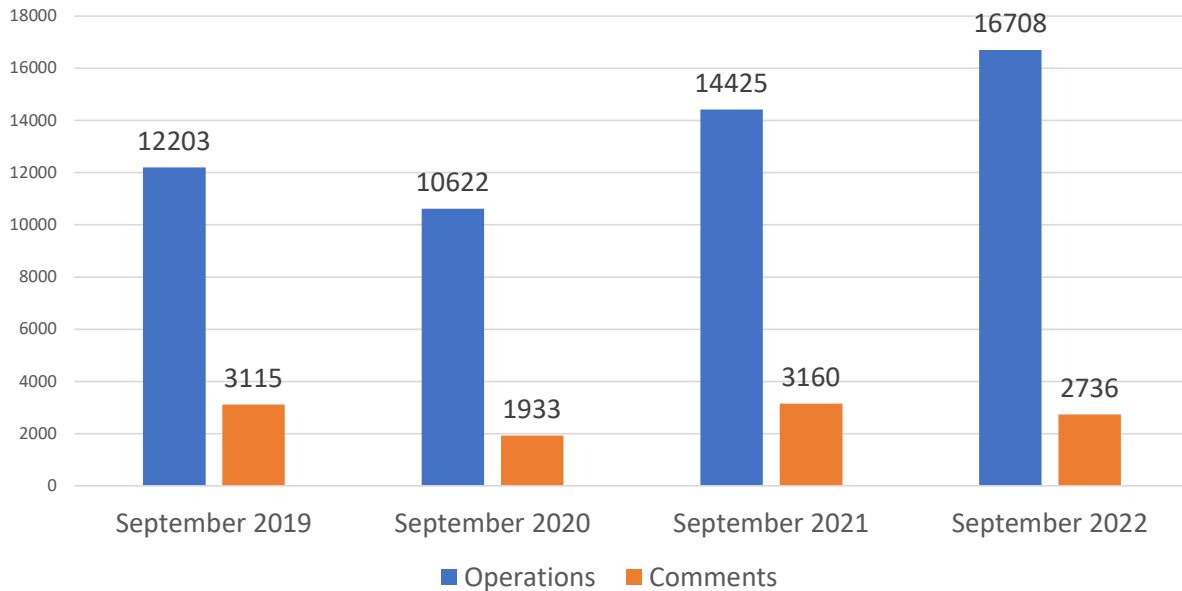
## Complaints by Time of Day



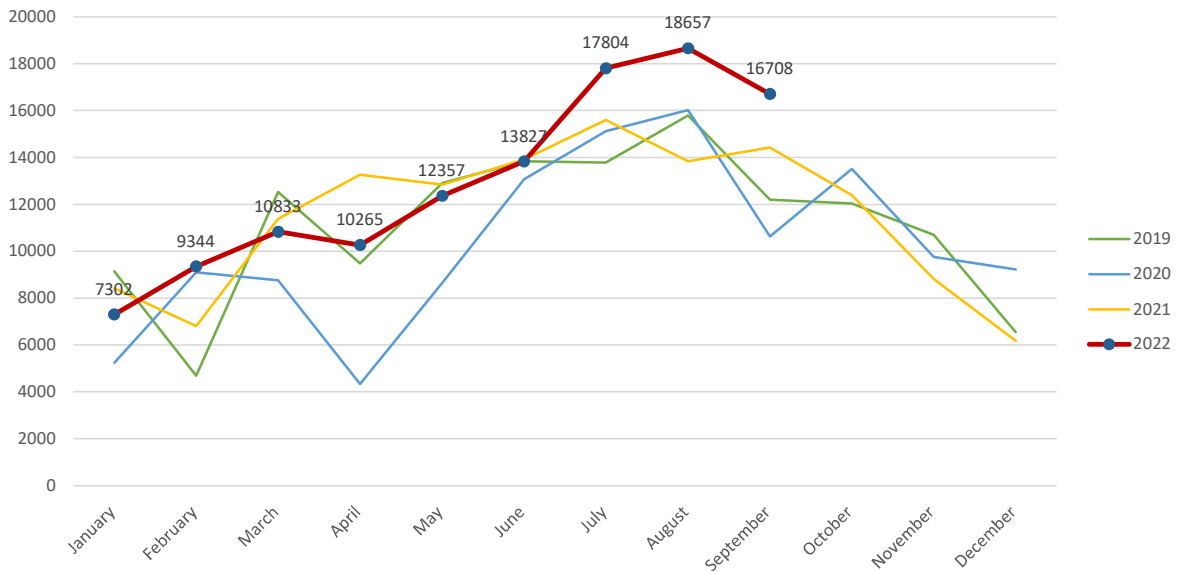
Aircraft Operations Summary:

During September 2022, the Paine Field Air Traffic Control Tower reported 16708 flight operations. This is a 15.8% increase in operations compared to September 2021 which had 14425 operations. The four-year average for September is 13489 flight operations. Total operations for September were 23.8% above the 4-year average.

Monthly Operations VS Noise Comments



Monthly Operations Four Year Data



Paine Field Website: [www.paineairport.com](http://www.paineairport.com)  
 Noise Abatement Procedures: [www.paineairport.com/159/Noise-Abatement-Procedures](http://www.paineairport.com/159/Noise-Abatement-Procedures)  
 Paine Field Noise FAQ: [www.paineairport.com/215/Noise-FAQs](http://www.paineairport.com/215/Noise-FAQs)  
 To submit a noise comment online: [www.planenoise.com/kpae](http://www.planenoise.com/kpae)  
 To submit a noise comment by phone: (425) 284-0500