

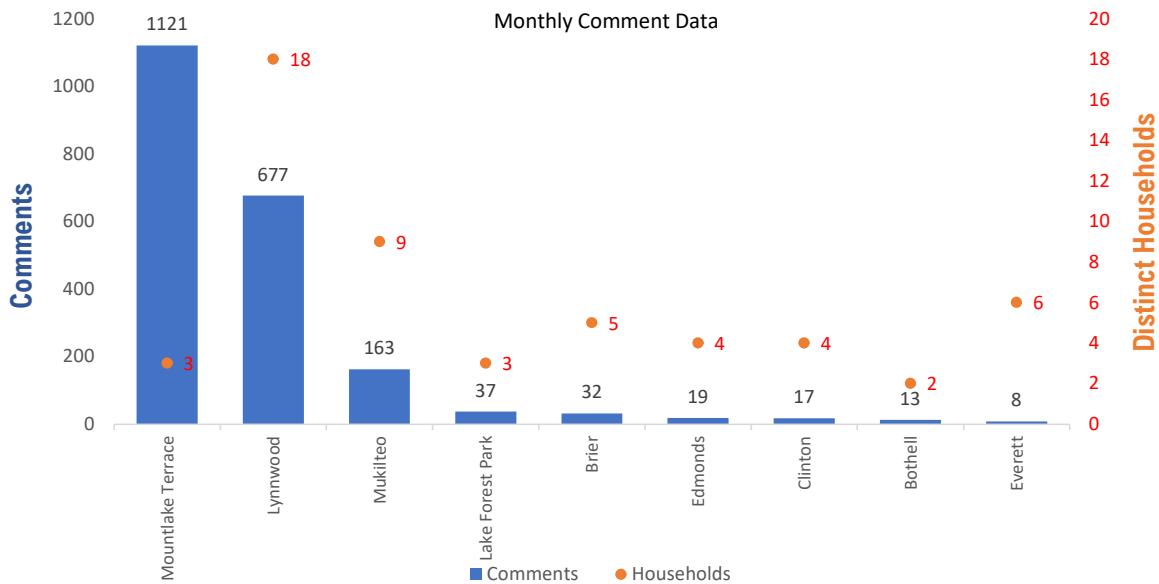


Monthly Totals & Trends

2,088
Noise Comments
55
Distinct Households
220
Distinct Households YTD
1,909 (91.4%)
Comments by top 10 households

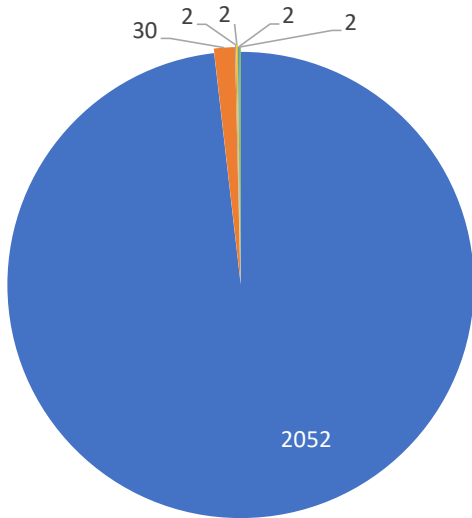
Paine Field – Snohomish County Airport uses a variety of methods to identify, track, and reduce the impact of aircraft noise on the surrounding communities. Noise comments are managed using a third-party application that correlates each complaint with a specific flight to help airport staff identify the primary causes of noise. The airport does not have the authority to restrict aircraft operations or change aircraft flight paths. Instead, the airport relies on pilots following the published voluntary noise abatement procedures. Several factors may require a pilot to deviate from these procedures including air traffic control instruction or safety considerations. Paine Field – Snohomish County Airport is owned and operated by Snohomish County in compliance with federal aviation regulations. Because the airport operates under the guidance of federal regulations, its facilities must remain open to users of the national airspace system 24 hours a day, 365 days a year.

Monthly Totals & Trends: By City

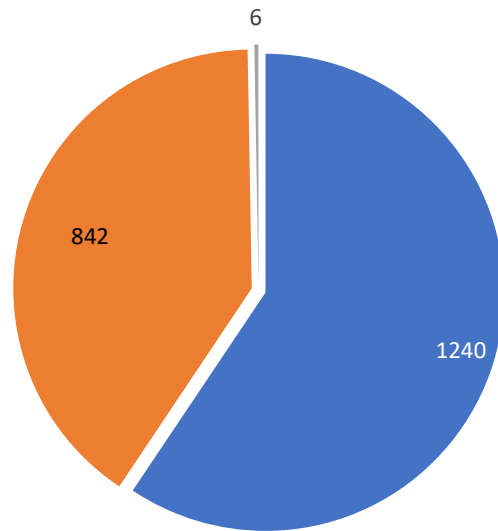


CITY	COMMENTS	DISTINCT HOUSEHOLDS	AVG COMMENTS/HOUSEHOLD
Mountlake Terrace	1,121	3	373.7
Lynnwood	677	18	37.6
Mukilteo	163	9	18.1
Lake Forest Park	37	3	12.3
Brier	32	5	6.4
Edmonds	19	4	4.8
Clinton	17	4	4.3
Bothell	13	2	6.5
Everett	8	6	1.3
Mill Creek	1	1	1.0
Totals	2,088	55	38.0

Comment Breakdown: Types & Filing Method



■ Loud ■ Low ■ Runup ■ Off Course ■ Unspecified ■ Military

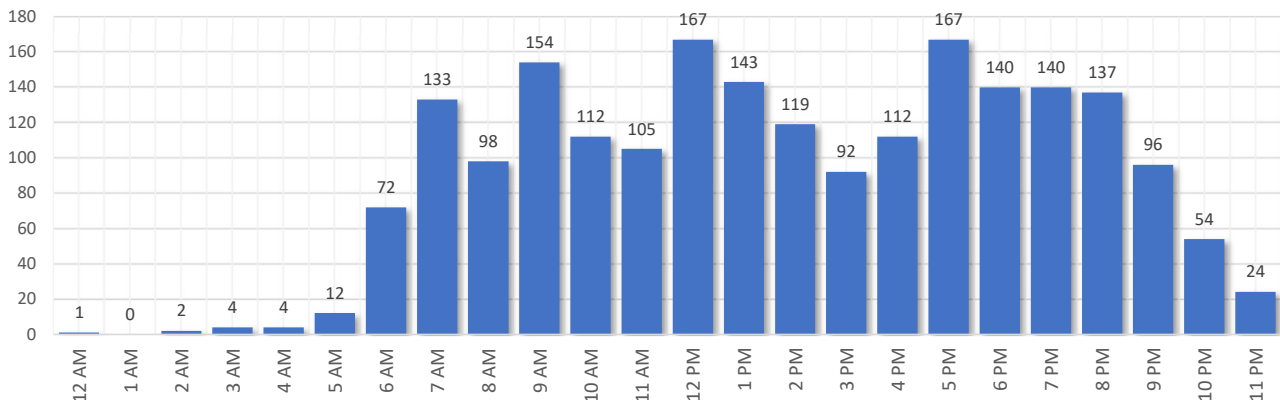


■ Webform ■ Web App ■ Hotline

COMMENT TYPE	COMMENTS
Loud	2052
Low	30
Runup	2
Off Course	2
Unspecified	2
Military	2

	METHOD RECEIVED	COUNT
Webform	Comment submitted via Paine Field website	1240
Web App	Third party web application	842
Hotline	Voicemail message via phone system	6

Complaints by Time of Day

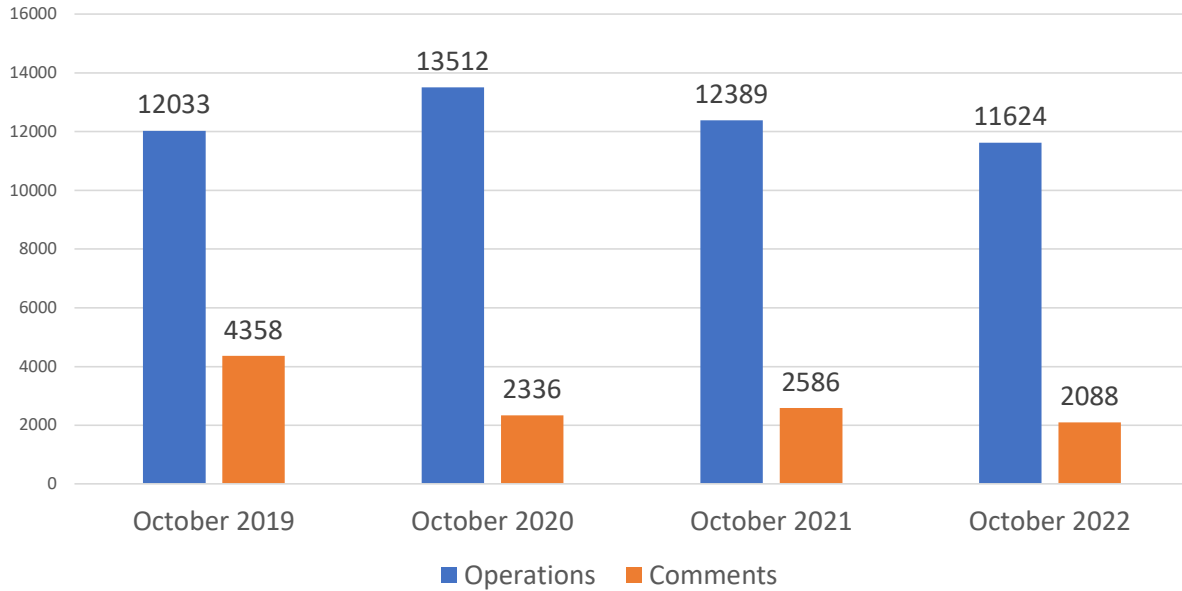




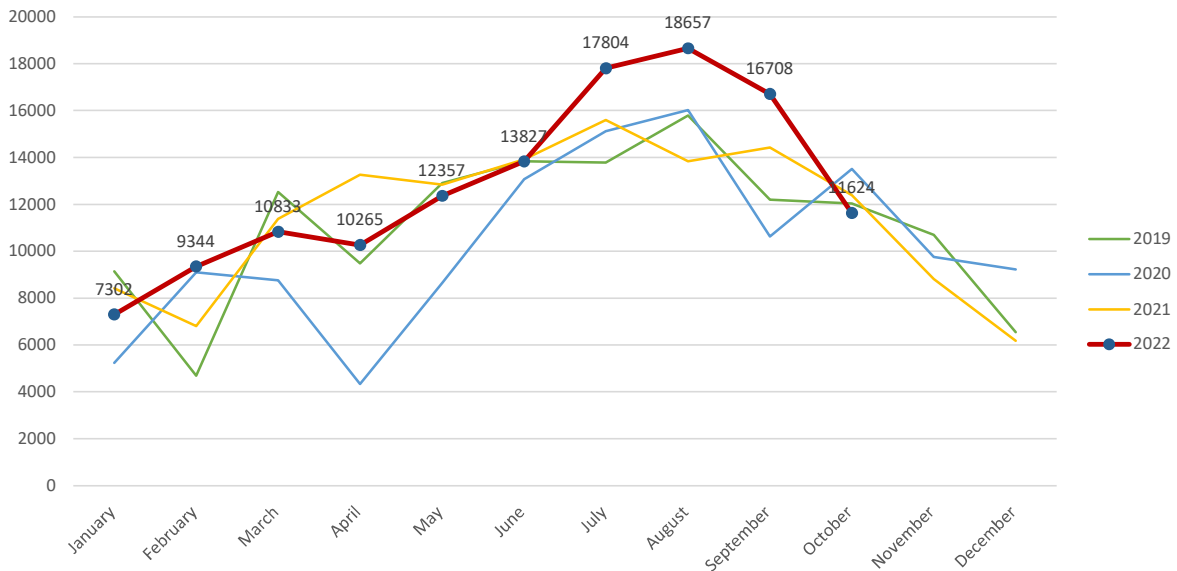
Aircraft Operations Summary:

During October 2022, the Paine Field Air Traffic Control Tower reported 11624 flight operations. This is a 6.1% decrease in operations compared to October 2021 which had 12389 operations. The four-year average for October is 12389 flight operations. Total operations for October were 6.1% below the 4-year average.

Monthly Operations VS Noise Comments



Monthly Operations Four Year Data



Paine Field Website: www.paineairport.com
 Noise Abatement Procedures: www.paineairport.com/159/Noise-Abatement-Procedures
 Paine Field Noise FAQ: www.paineairport.com/215/Noise-FAQs
 To submit a noise comment online: www.planenoise.com/kpae
 To submit a noise comment by phone: (425) 284-0500