

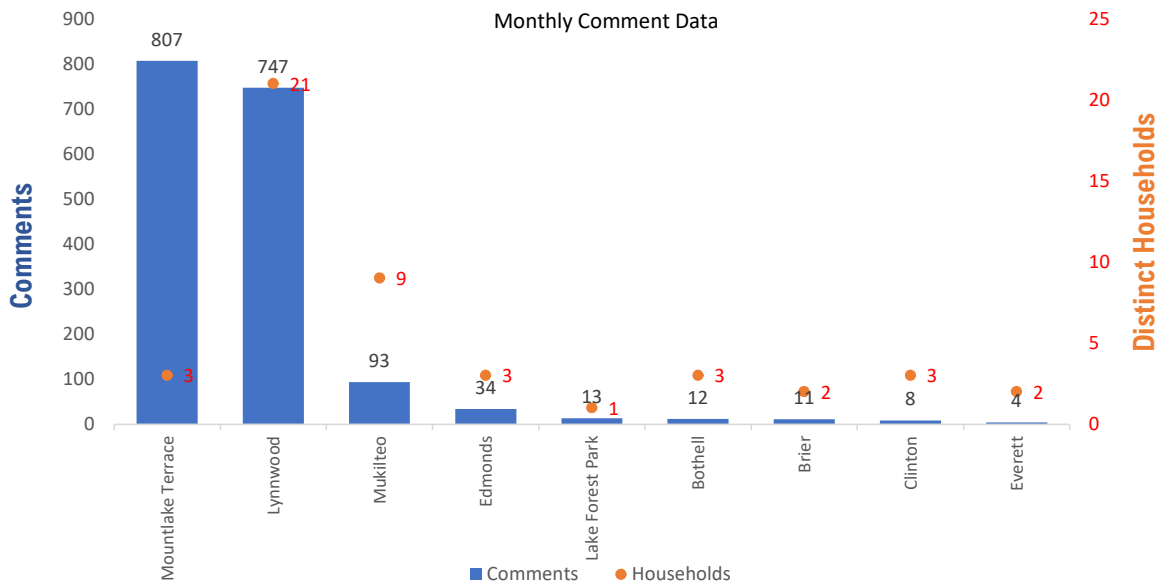


Monthly Totals & Trends

1,729
Noise Comments
47
Distinct Households
227
Distinct Households YTD
1,621 (93.8%)
Comments by top 10 households

Paine Field – Snohomish County Airport uses a variety of methods to identify, track, and reduce the impact of aircraft noise on the surrounding communities. Noise comments are managed using a third-party application that correlates each complaint with a specific flight to help airport staff identify the primary causes of noise. The airport does not have the authority to restrict aircraft operations or change aircraft flight paths. Instead, the airport relies on pilots following the published voluntary noise abatement procedures. Several factors may require a pilot to deviate from these procedures including air traffic control instruction or safety considerations. Paine Field – Snohomish County Airport is owned and operated by Snohomish County in compliance with federal aviation regulations. Because the airport operates under the guidance of federal regulations, its facilities must remain open to users of the national airspace system 24 hours a day, 365 days a year.

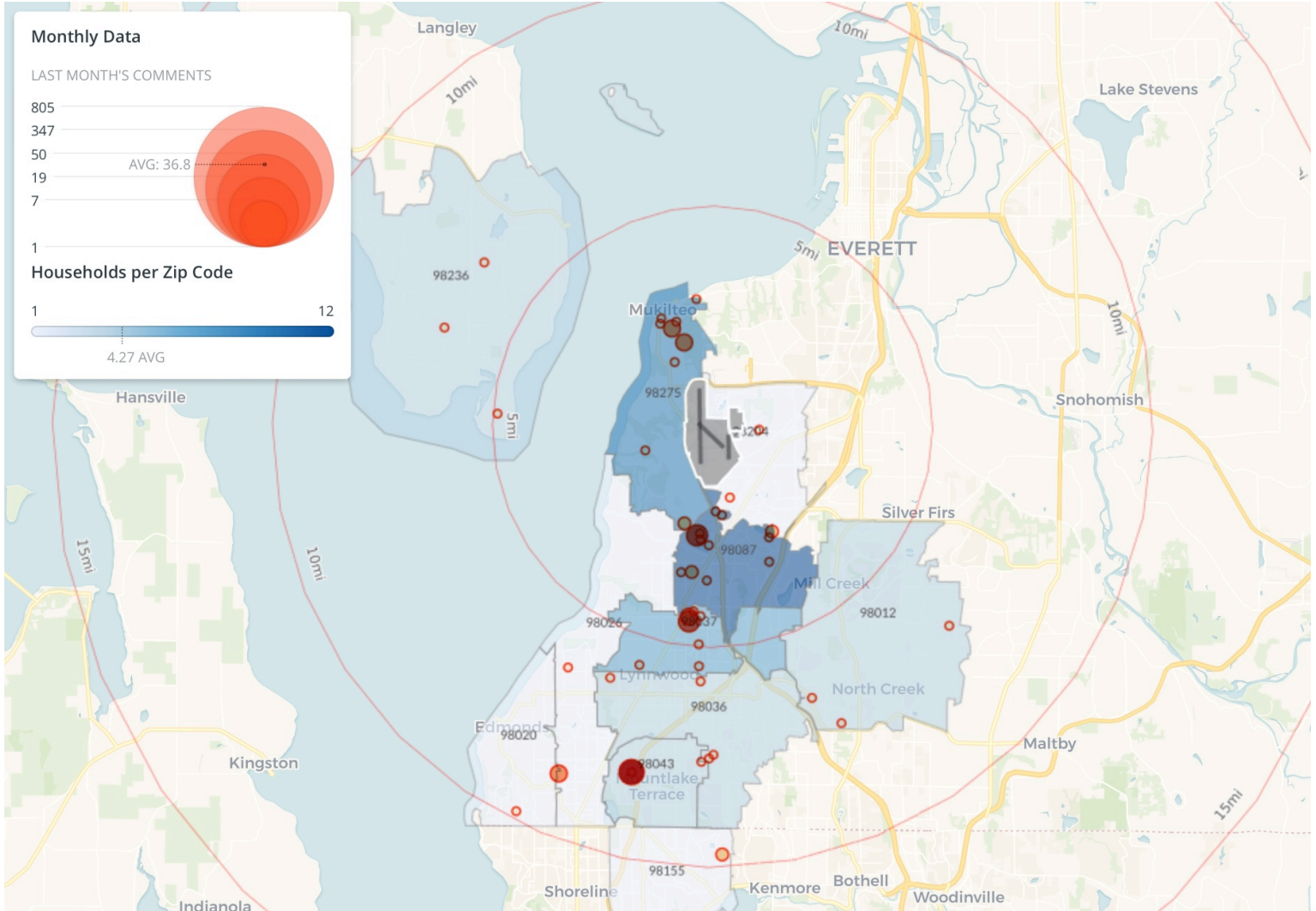
Monthly Totals & Trends: By City



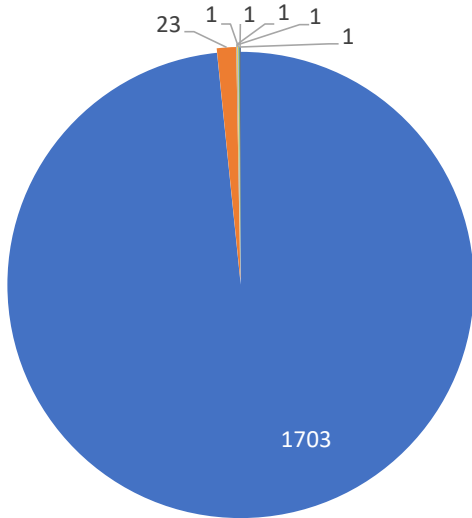
CITY	COMMENTS	DISTINCT HOUSEHOLDS	AVG COMMENTS/ HOUSEHOLD
Mountlake Terrace	807	3	269.0
Lynnwood	747	21	35.6
Mukilteo	93	9	10.3
Edmonds	34	3	11.3
Lake Forest Park	13	1	13.0
Bothell	12	3	4.0
Brier	11	2	5.5
Clinton	8	3	2.7
Everett	4	2	2.0
Totals	1,729	47	36.8

Noise Comment Map: By Zip Code

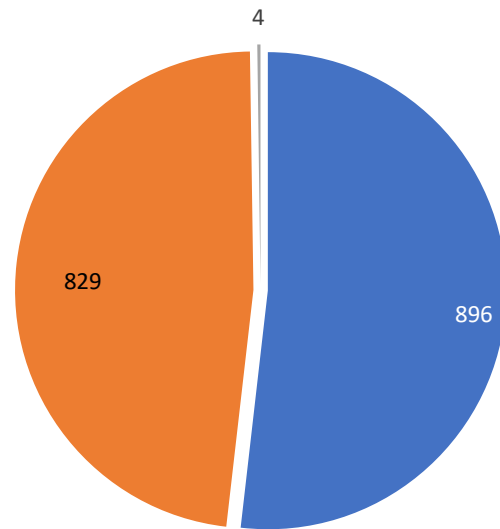
NOTES: Noise comments from households submitted without valid address information are not depicted on the map.



Comment Breakdown: Types & Filing Method



■ Loud ■ Low ■ Helicopter ■ Other
■ Runup ■ Unspecified ■ Off Course

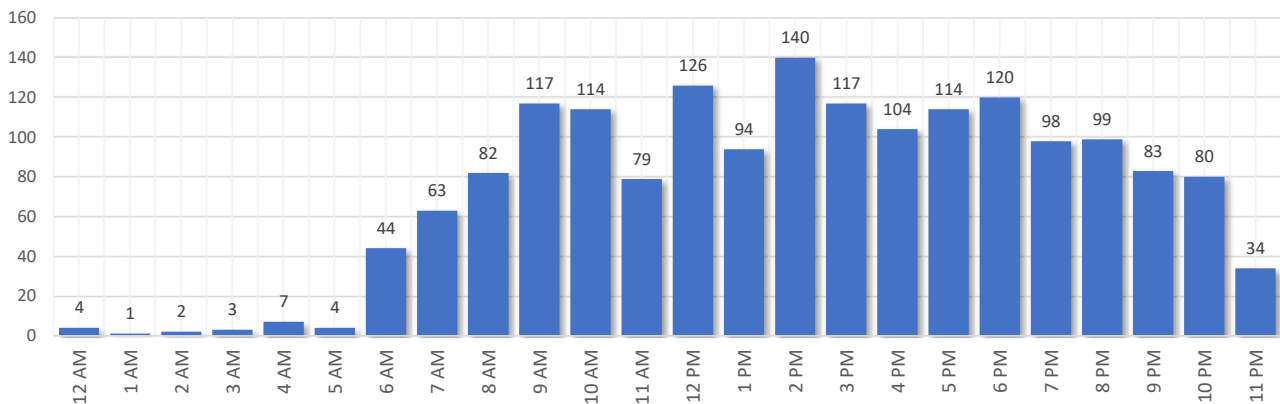


■ Webform ■ Web App ■ Hotline

COMMENT TYPE	COMMENTS
Loud	1703
Low	23
Helicopter	1
Other	1
Runup	1
Unspecified	1
Off Course	1

METHOD RECEIVED	COUNT	
Webform	Comment submitted via Paine Field website	896
Web App	Third party web application	829
Hotline	Voicemail message via phone system	4

Complaints by Time of Day

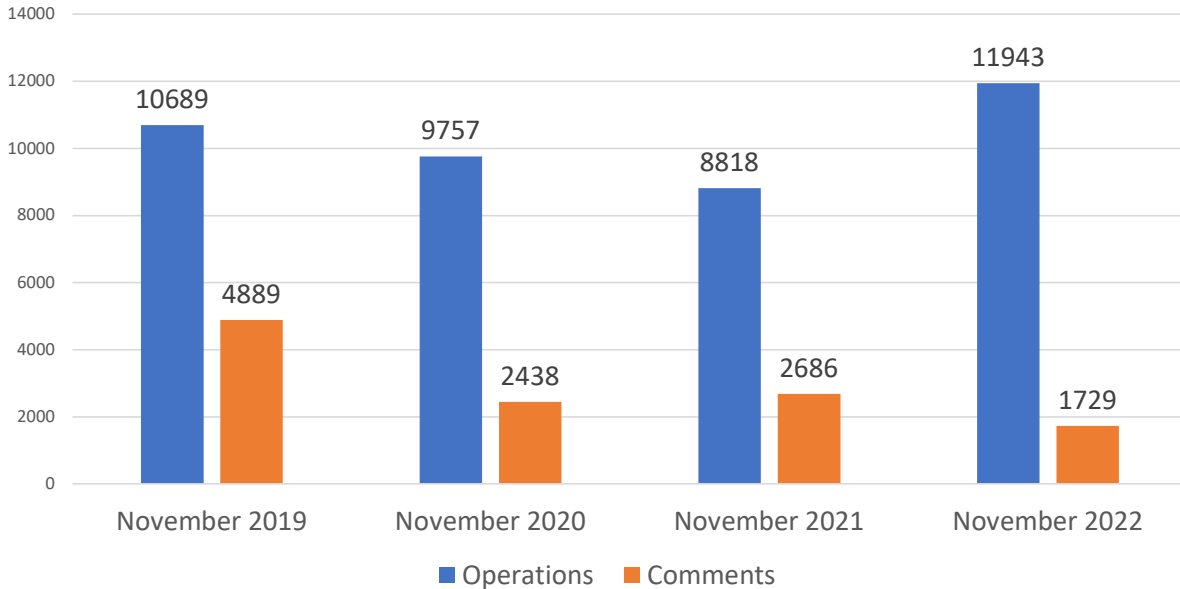




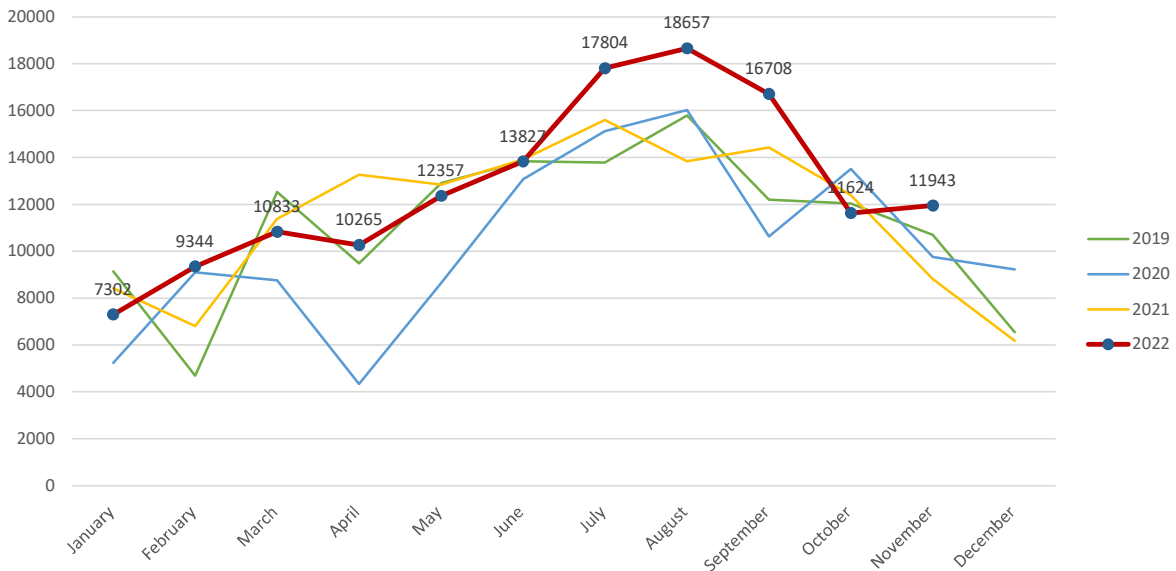
Aircraft Operations Summary:

During November 2022, the Paine Field Air Traffic Control Tower reported 11943 flight operations. This is a 35.4% increase in operations compared to November 2021 which had 8818 operations. The four-year average for November is 10301 flight operations. Total operations for November were 15.9% above the 4-year average.

Monthly Operations VS Noise Comments



Monthly Operations Four Year Data



Paine Field Website: www.paineairport.com
 Noise Abatement Procedures: www.paineairport.com/159/Noise-Abatement-Procedures
 Paine Field Noise FAQ: www.paineairport.com/215/Noise-FAQs
 To submit a noise comment online: www.planenoise.com/kpae
 To submit a noise comment by phone: (425) 284-0500