



Monthly Totals & Trends

1,745

Noise Comments

41

Distinct Households

230

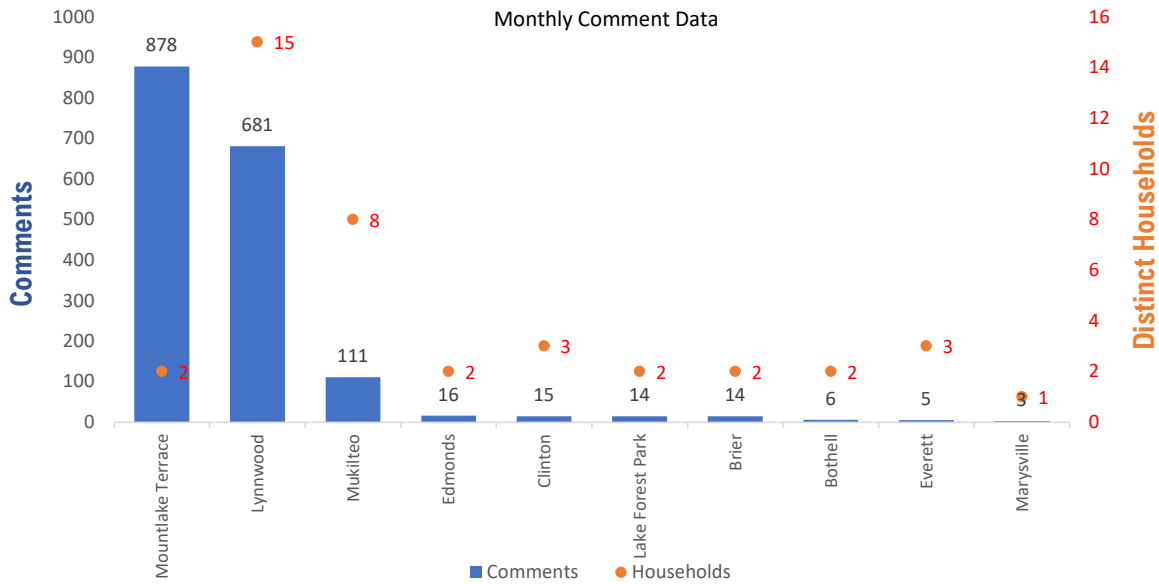
Distinct Households YTD

1,651 (94.6%)

Comments by top 10 households

Paine Field – Snohomish County Airport uses a variety of methods to identify, track, and reduce the impact of aircraft noise on the surrounding communities. Noise comments are managed using a third-party application that correlates each complaint with a specific flight to help airport staff identify the primary causes of noise. The airport does not have the authority to restrict aircraft operations or change aircraft flight paths. Instead, the airport relies on pilots following the published voluntary noise abatement procedures. Several factors may require a pilot to deviate from these procedures including air traffic control instruction or safety considerations. Paine Field – Snohomish County Airport is owned and operated by Snohomish County in compliance with federal aviation regulations. Because the airport operates under the guidance of federal regulations, its facilities must remain open to users of the national airspace system 24 hours a day, 365 days a year.

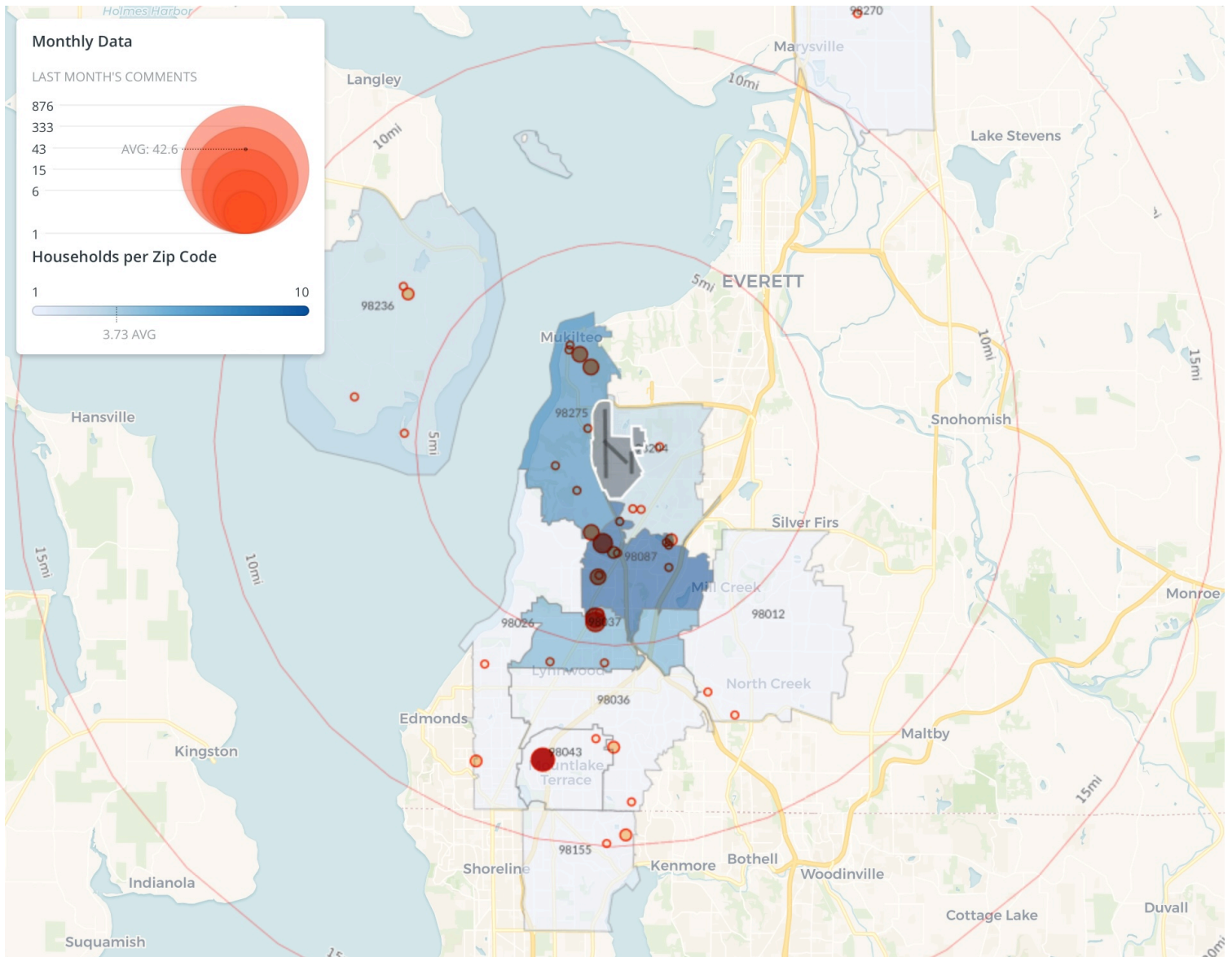
Monthly Totals & Trends: By City



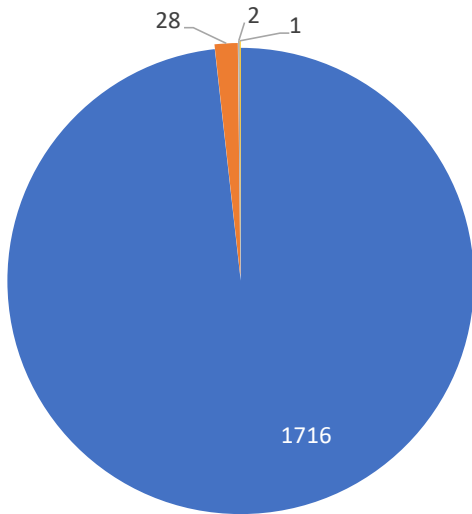
CITY	COMMENTS	DISTINCT HOUSEHOLDS	AVG COMMENTS/ HOUSEHOLD
Mountlake Terrace	878	2	439.0
Lynnwood	681	15	45.4
Mukilteo	111	8	13.9
Edmonds	16	2	8.0
Clinton	15	3	5.0
Lake Forest Park	14	2	7.0
Brier	14	2	7.0
Bothell	6	2	3.0
Everett	5	3	1.7
Marysville	3	1	3.0
Island County	2	1	2.0
Total	1,745	41	42.6

Noise Comment Map: By Zip Code

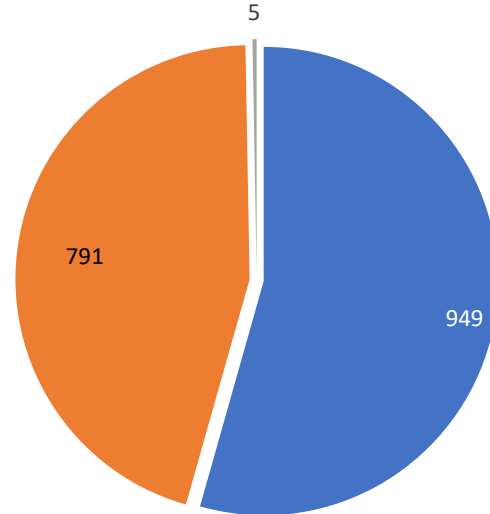
NOTES: Noise comments from households submitted without valid address information are not depicted on the map.



Comment Breakdown: Types & Filing Method



■ Loud ■ Low ■ Unspecified ■ Other

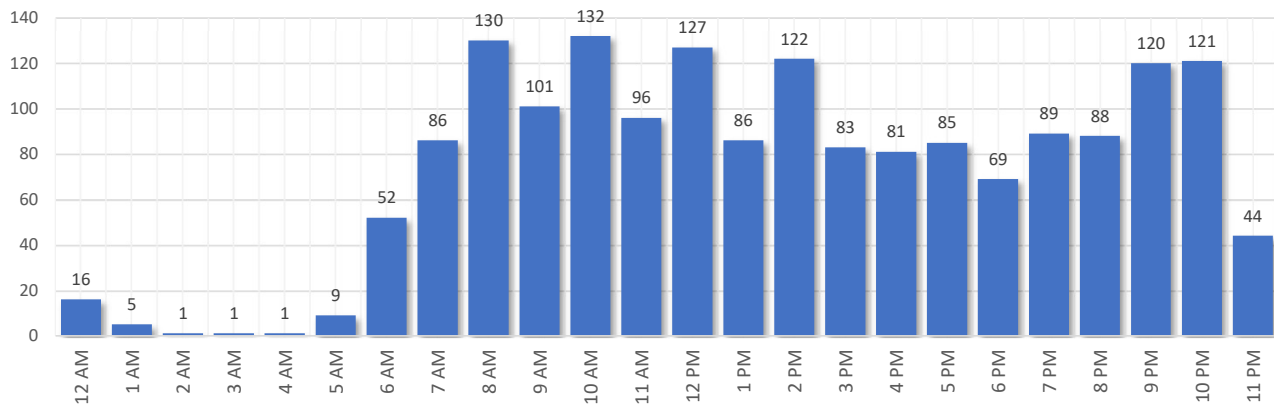


■ Webform ■ Web App ■ Hotline

COMMENT TYPE	COMMENTS
Loud	1716
Low	28
Unspecified	2
Other	1

	METHOD RECEIVED	COUNT
Webform	Comment submitted via Paine Field website	949
Web App	Third party web application	791
Hotline	Voicemail message via phone system	5

Complaints by Time of Day

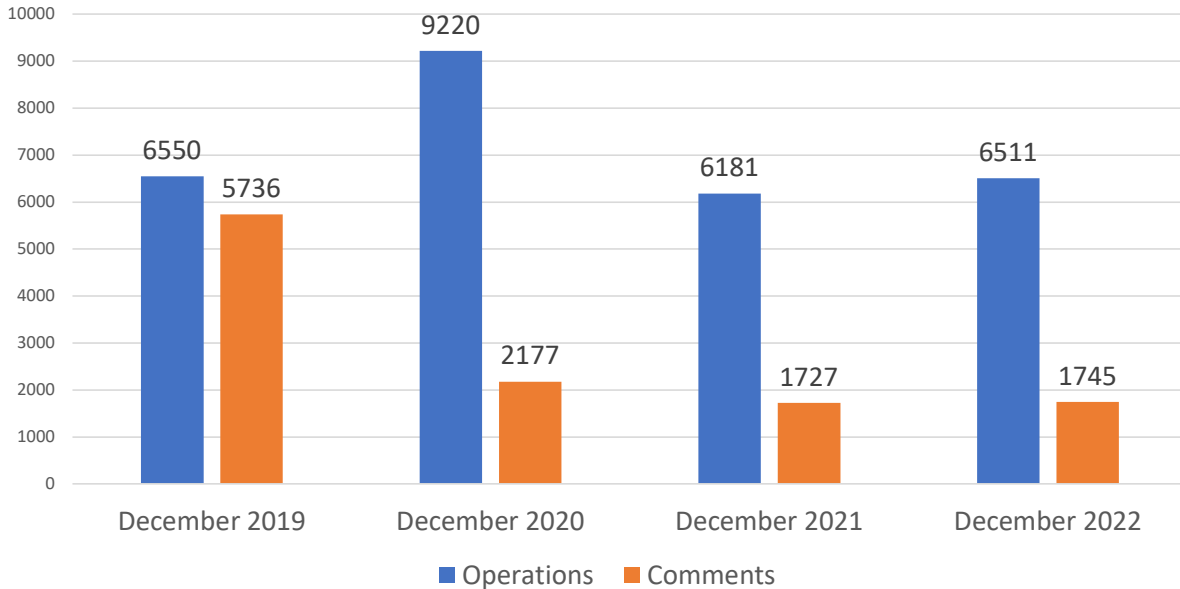




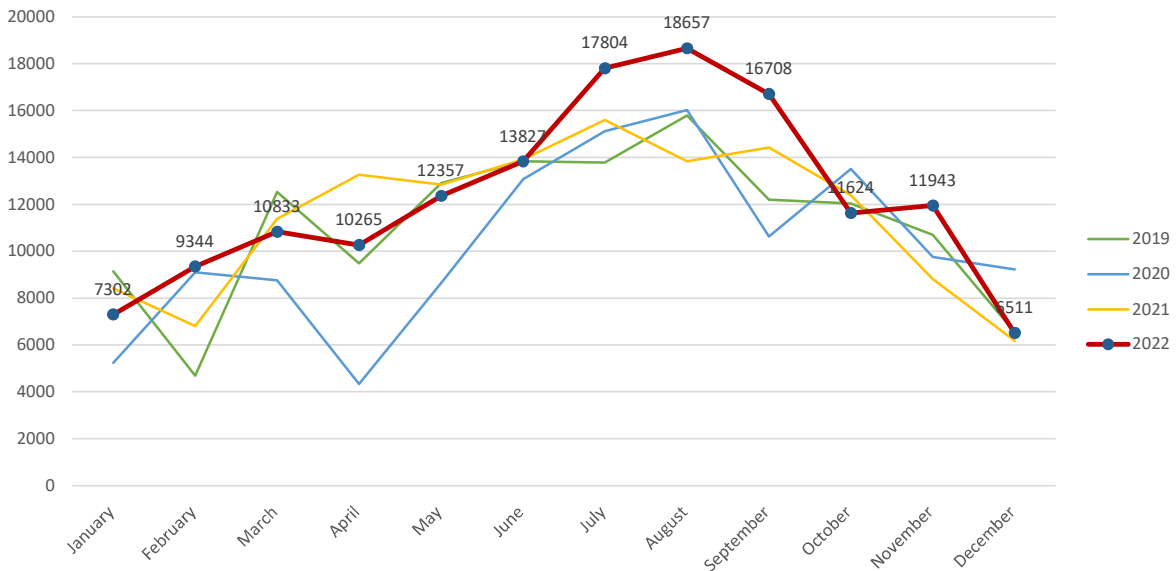
Aircraft Operations Summary:

During December 2022, the Paine Field Air Traffic Control Tower reported 6511 flight operations. This is a 5.3% increase in operations compared to December 2021 which had 6181 operations. The four-year average for December is 7115 flight operations. Total operations for December were 8.4% below the 4-year average.

Monthly Operations VS Noise Comments



Monthly Operations Four Year Data



Paine Field Website: www.paineairport.com
 Noise Abatement Procedures: www.paineairport.com/159/Noise-Abatement-Procedures
 Paine Field Noise FAQ: www.paineairport.com/215/Noise-FAQs
 To submit a noise comment online: www.planenoise.com/kpae
 To submit a noise comment by phone: (425) 284-0500