

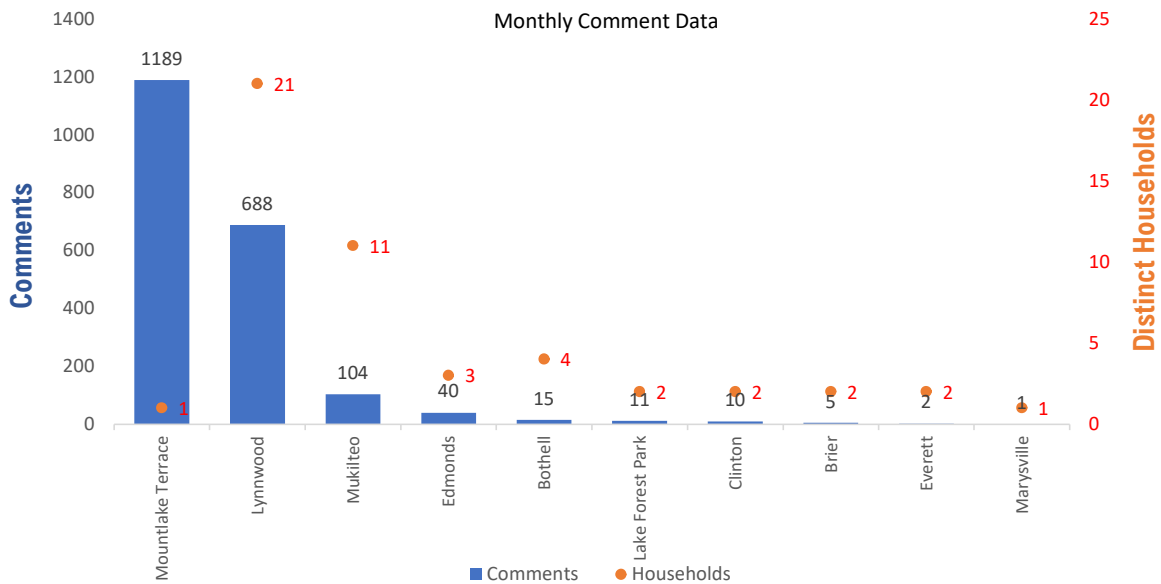


## Monthly Totals & Trends

**2,065**  
Noise Comments
**49**  
Distinct Households
**49**  
Distinct Households YTD
**1,960 (94.9%)**  
Comments by top 10 households

Paine Field – Snohomish County Airport uses a variety of methods to identify, track, and reduce the impact of aircraft noise on the surrounding communities. Noise comments are managed using a third-party application that correlates each complaint with a specific flight to help airport staff identify the primary causes of noise. The airport does not have the authority to restrict aircraft operations or change aircraft flight paths. Instead, the airport relies on pilots following the published voluntary noise abatement procedures. Several factors may require a pilot to deviate from these procedures including air traffic control instruction or safety considerations. Paine Field – Snohomish County Airport is owned and operated by Snohomish County in compliance with federal aviation regulations. Because the airport operates under the guidance of federal regulations, its facilities must remain open to users of the national airspace system 24 hours a day, 365 days a year.

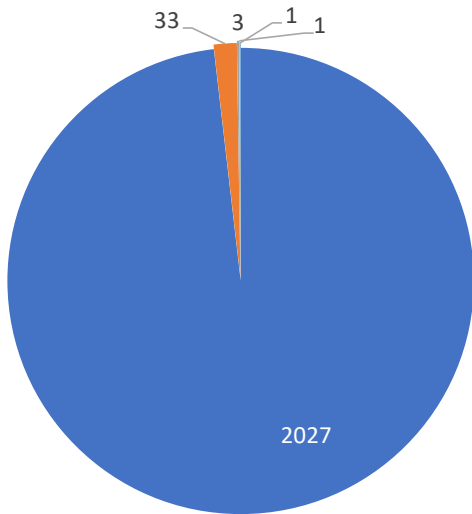
### Monthly Totals & Trends: By City



CITY	COMMENTS	DISTINCT HOUSEHOLDS	AVG COMMENTS/ HOUSEHOLD
Mountlake Terrace	1,189	1	1,189.0
Lynnwood	688	21	32.8
Mukilteo	104	11	9.5
Edmonds	40	3	13.3
Bothell	15	4	3.8
Lake Forest Park	11	2	5.5
Clinton	10	2	5.0
Brier	5	2	2.5
Everett	2	2	1.0
Marysville	1	1	1.0
<b>Total</b>	<b>2,065</b>	<b>49</b>	<b>42.1</b>

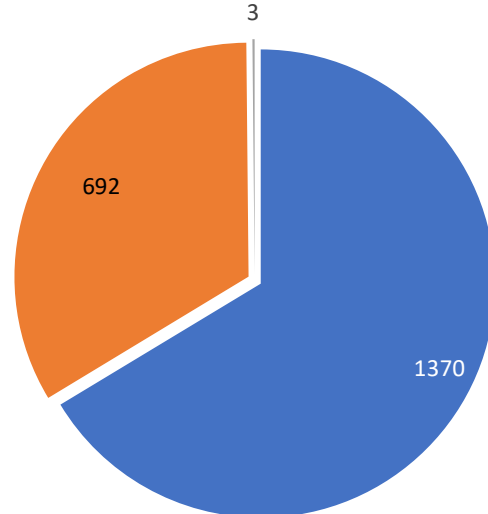


## Comment Breakdown: Types & Filing Method



■ Loud ■ Low ■ Unknown ■ Other ■ Off Course

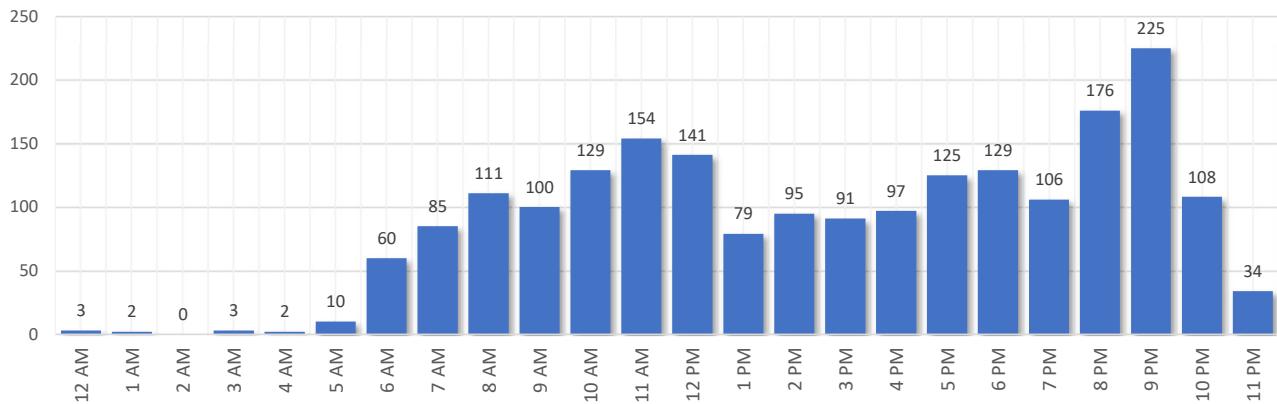
COMMENT TYPE	COMMENTS
Loud	2027
Low	33
Unknown	3
Other	1
Off Course	1



■ Webform ■ Web App ■ Hotline

METHOD RECEIVED	COUNT	
Webform	Comment submitted via Paine Field website	1370
Web App	Third party web application	692
Hotline	Voicemail message via phone system	3

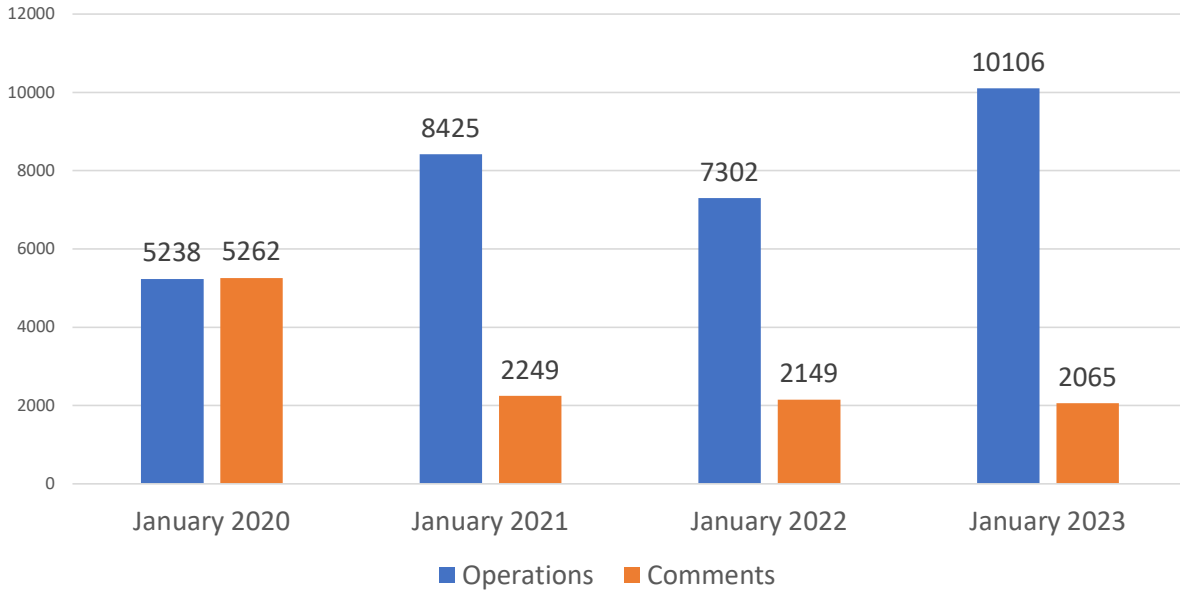
## Complaints by Time of Day



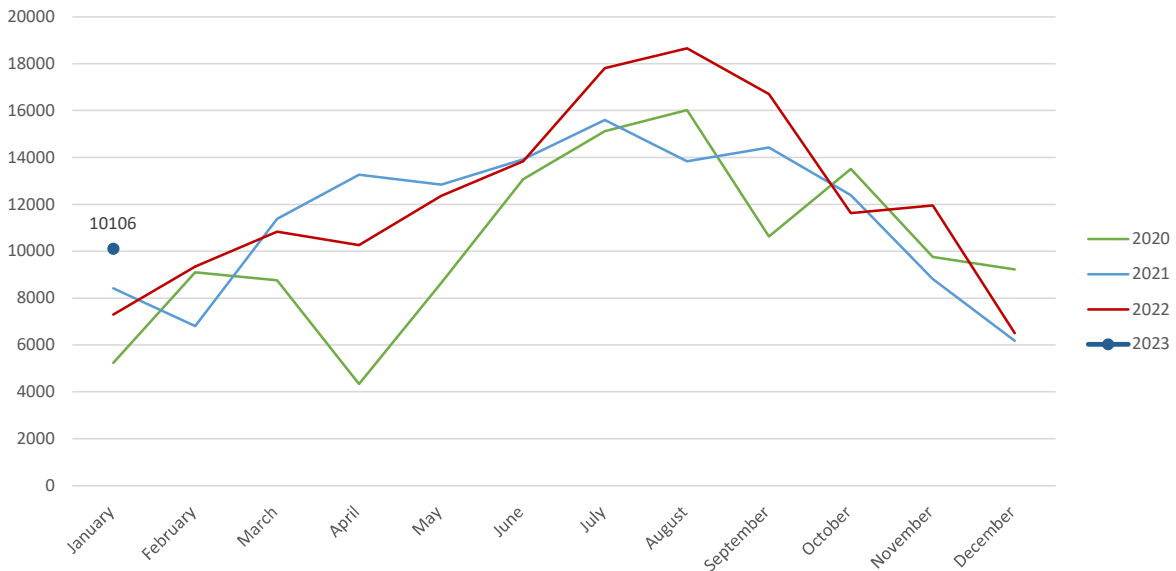
Aircraft Operations Summary:

During January 2023, the Paine Field Air Traffic Control Tower reported 10106 flight operations. This is a 38.4% increase in operations compared to January 2022 which had 7302 operations. The four-year average for January is 7767 flight operations. Total operations for January were 30.1% above the 4-year average.

Monthly Operations VS Noise Comments



Monthly Operations Four Year Data



Paine Field Website: [www.paineairport.com](http://www.paineairport.com)  
 Noise Abatement Procedures: [www.paineairport.com/159/Noise-Abatement-Procedures](http://www.paineairport.com/159/Noise-Abatement-Procedures)  
 Paine Field Noise FAQ: [www.paineairport.com/215/Noise-FAQs](http://www.paineairport.com/215/Noise-FAQs)  
 To submit a noise comment online: [www.planenoise.com/kpae](http://www.planenoise.com/kpae)  
 To submit a noise comment by phone: (425) 284-0500