

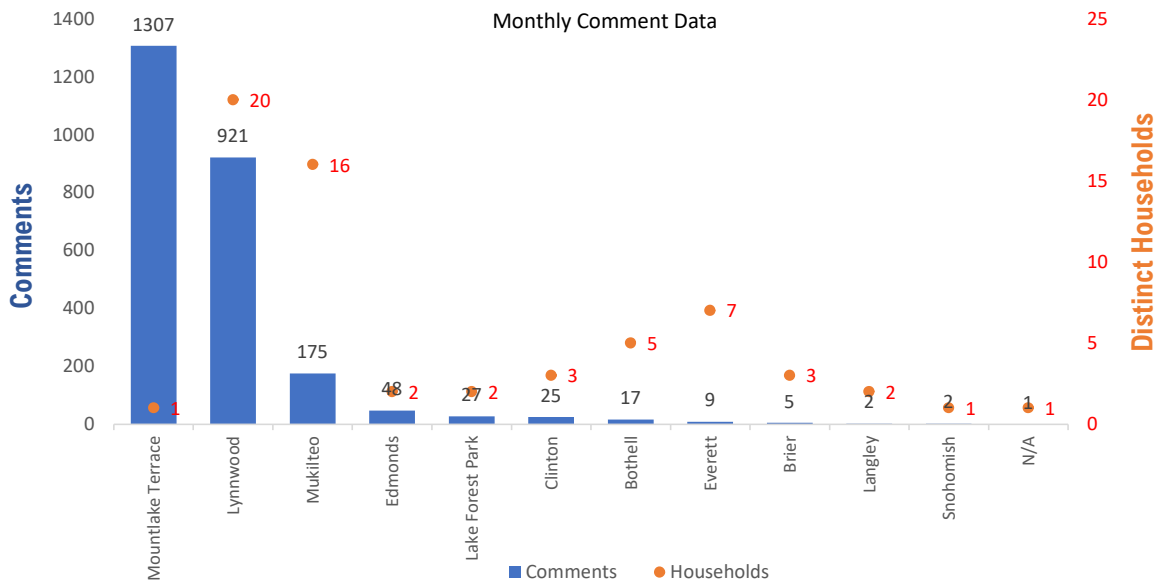


Monthly Totals & Trends

2,539
Noise Comments
63
Distinct Households
103
Distinct Households YTD
2,380 (93.7%)
Comments by top 10 households

Paine Field – Snohomish County Airport uses a variety of methods to identify, track, and reduce the impact of aircraft noise on the surrounding communities. Noise comments are managed using a third-party application that correlates each complaint with a specific flight to help airport staff identify the primary causes of noise. The airport does not have the authority to restrict aircraft operations or change aircraft flight paths. Instead, the airport relies on pilots following the published voluntary noise abatement procedures. Several factors may require a pilot to deviate from these procedures including air traffic control instruction or safety considerations. Paine Field – Snohomish County Airport is owned and operated by Snohomish County in compliance with federal aviation regulations. Because the airport operates under the guidance of federal regulations, its facilities must remain open to users of the national airspace system 24 hours a day, 365 days a year.

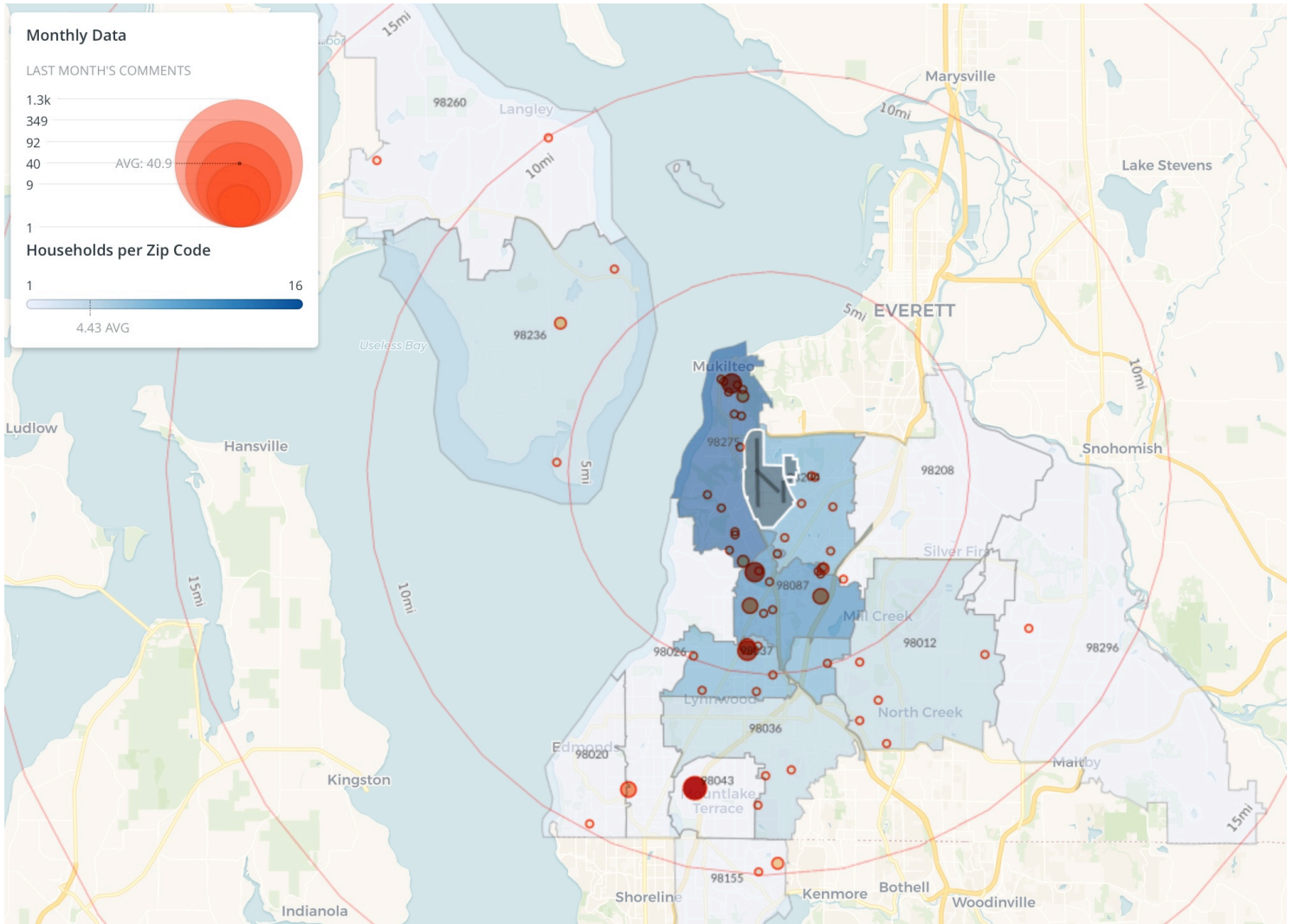
Monthly Totals & Trends: By City



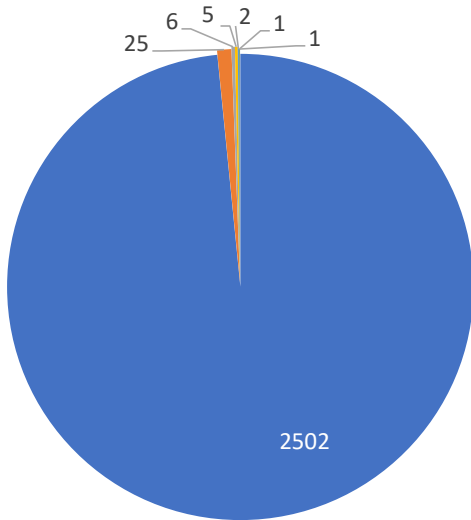
CITY	COMMENTS	DISTINCT HOUSEHOLDS	AVG COMMENTS/ HOUSEHOLD
Mountlake Terrace	1,307	1	1,307.0
Lynnwood	921	20	46.1
Mukilteo	175	16	10.9
Edmonds	48	2	24.0
Lake Forest Park	27	2	13.5
Clinton	25	3	8.3
Bothell	17	5	3.4
Everett	9	7	1.3
Brier	5	3	1.7
Snohomish	2	1	2.0
Langley	2	2	1.0
N/A	1	1	1.0
Totals	2,539	63	40.3

Noise Comment Map: By Zip Code

NOTES: Noise comments from households submitted without valid address information are not depicted on the map.

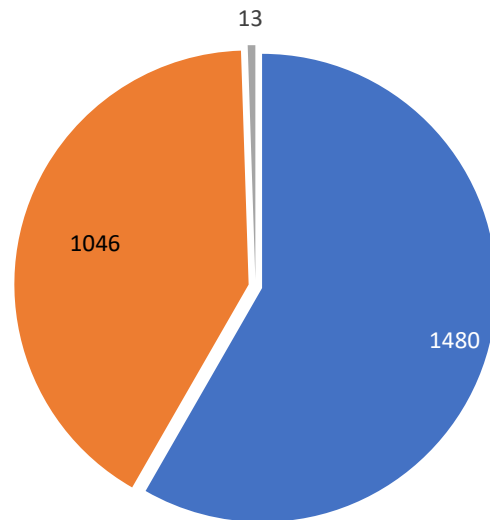


Comment Breakdown: Types & Filing Method



- Loud
- Low
- Unspecified
- Other
- Military
- Runup
- Helicopter

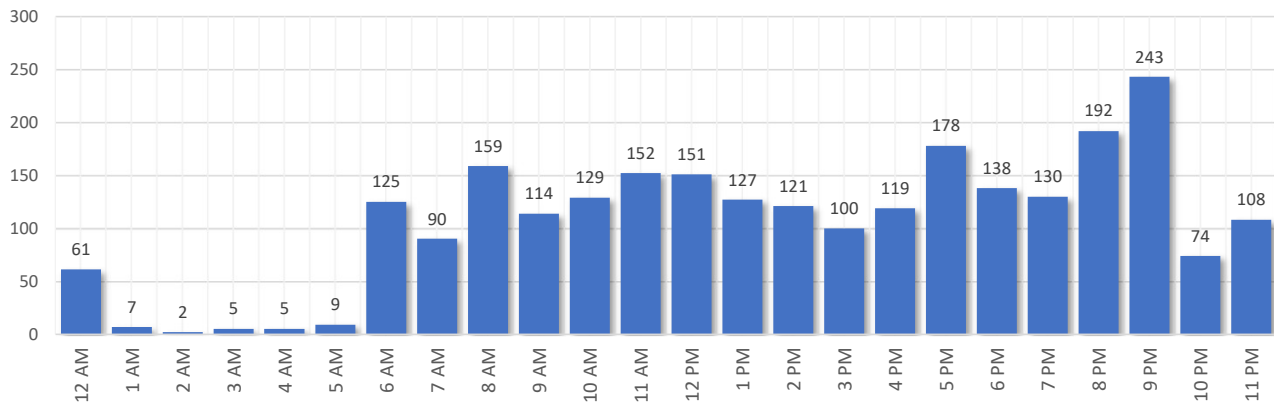
COMMENT TYPE	COMMENTS
Loud	2502
Low	25
Unspecified	6
Other	5
Military	2
Runup	1
Helicopter	1



- Webform
- Web App
- Hotline

	METHOD RECEIVED	COUNT
Webform	Comment submitted via Paine Field website	1480
Web App	Third party web application	1046
Hotline	Voicemail message via phone system	13

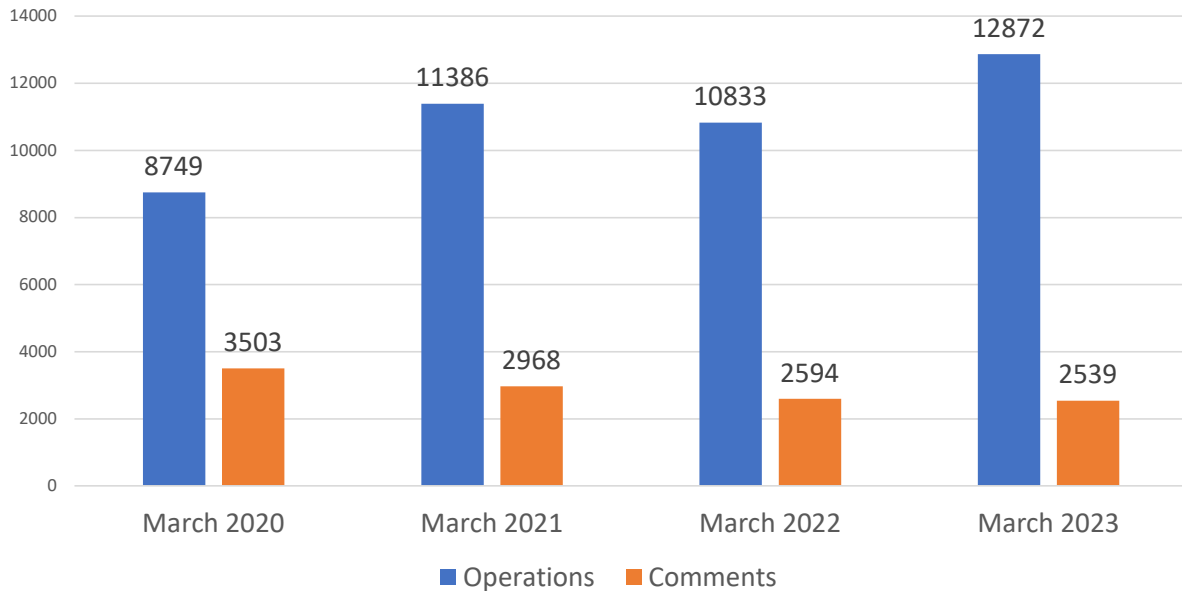
Complaints by Time of Day



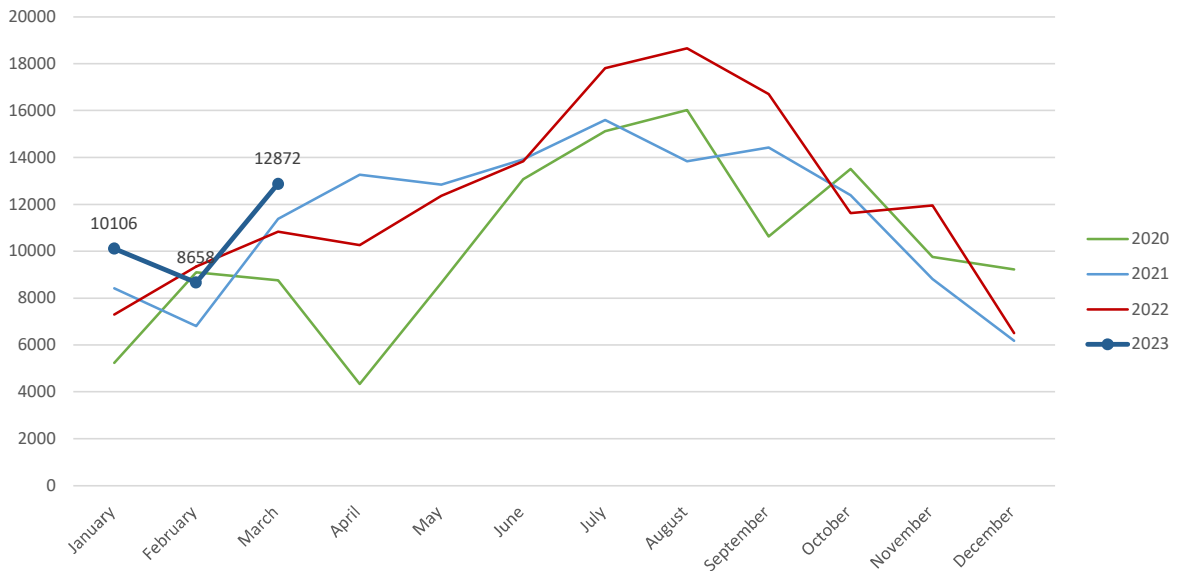
Aircraft Operations Summary:

During March 2023, the Paine Field Air Traffic Control Tower reported 12872 flight operations. This is a 18.8% increase in operations compared to March 2022 which had 10833 operations. The four-year average for March is 10960 flight operations. Total operations for March were 17.4% above the 4-year average.

Monthly Operations VS Noise Comments



Monthly Operations Four Year Data



Paine Field Website: www.painefield.com
 Noise Abatement Procedures: www.painefield.com/159/Noise-Abatement-Procedures
 Paine Field Noise FAQ: www.painefield.com/215/Noise-FAQs
 To submit a noise comment online: www.planenoise.com/kpae
 To submit a noise comment by phone: (425) 284-0500