

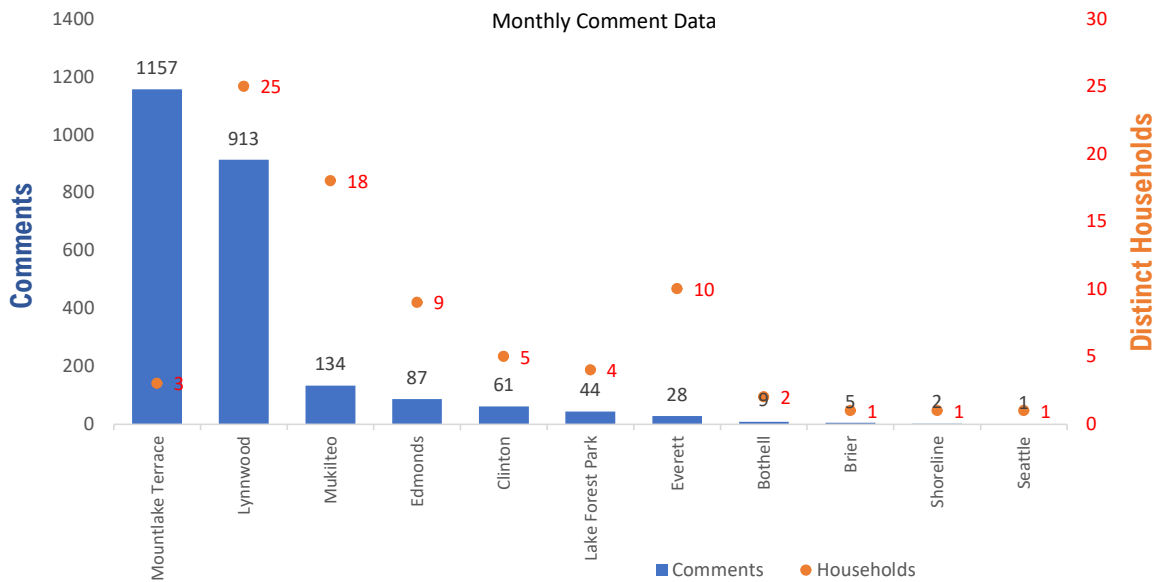


## Monthly Totals & Trends

2,441                      79                      244                      2,184 (89.5%)  
 Noise Comments                      Distinct Households                      Distinct Households YTD                      Comments by top 10 households

Paine Field – Snohomish County Airport uses a variety of methods to identify, track, and reduce the impact of aircraft noise on the surrounding communities. Noise comments are managed using a third-party application that correlates each complaint with a specific flight to help airport staff identify the primary causes of noise. The airport does not have the authority to restrict aircraft operations or change aircraft flight paths. Instead, the airport relies on pilots following the published voluntary noise abatement procedures. Several factors may require a pilot to deviate from these procedures including air traffic control instruction or safety considerations. Paine Field – Snohomish County Airport is owned and operated by Snohomish County in compliance with federal aviation regulations. Because the airport operates under the guidance of federal regulations, its facilities must remain open to users of the national airspace system 24 hours a day, 365 days a year.

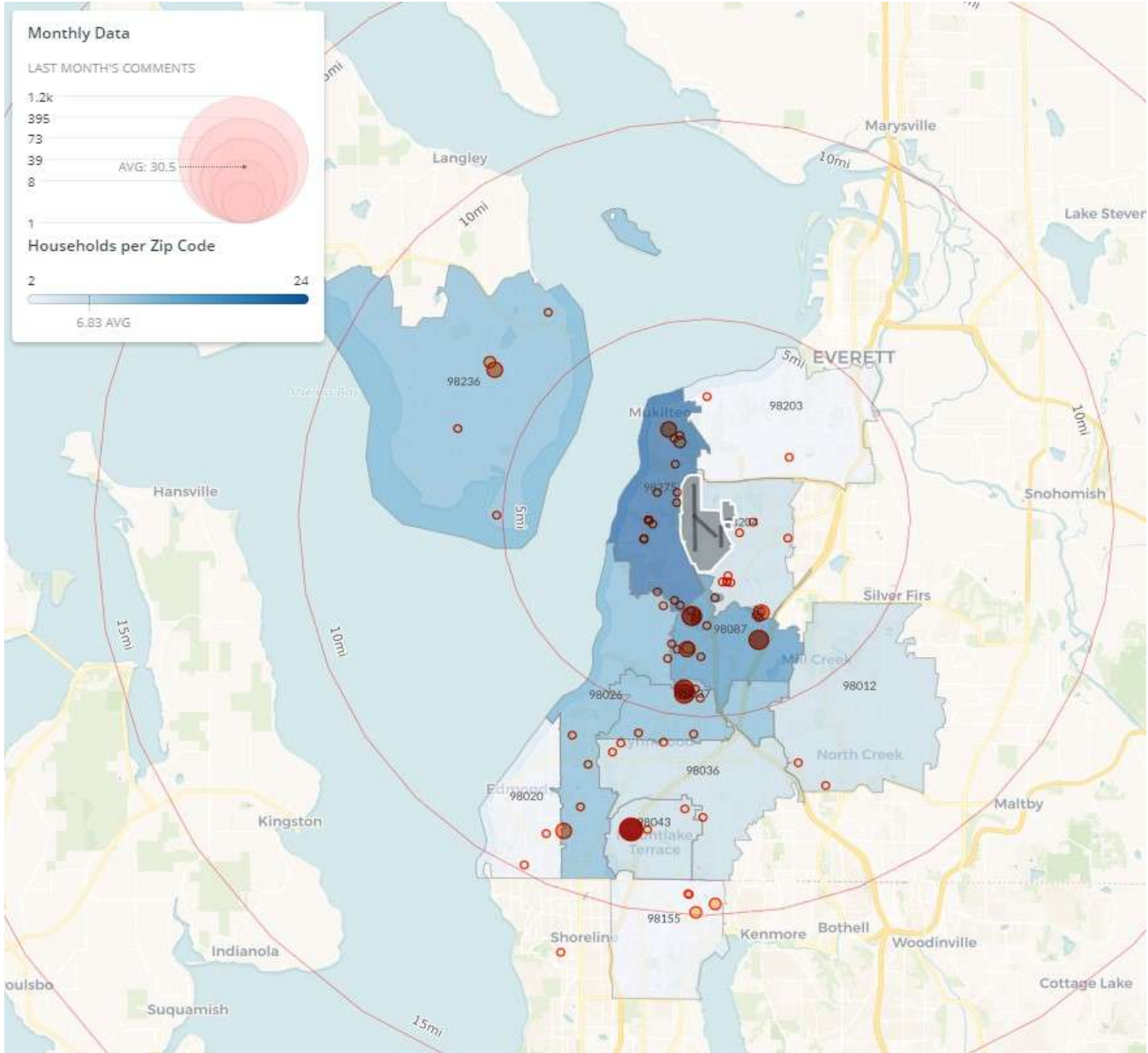
### Monthly Totals & Trends: By City



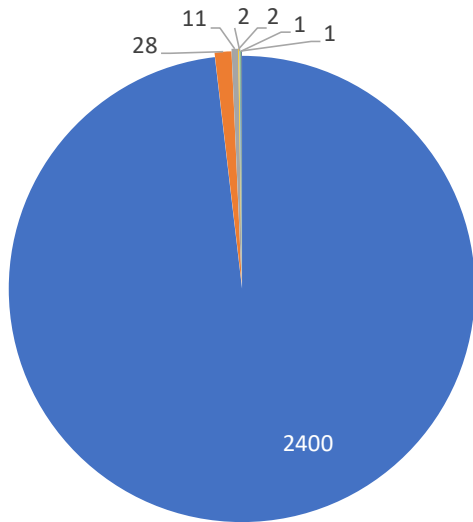
CITY	COMMENTS	DISTINCT HOUSEHOLDS	AVG COMMENTS/ HOUSEHOLD
Mountlake Terrace	1,157	3	385.7
Lynnwood	913	25	36.5
Mukilteo	134	18	7.4
Edmonds	87	9	9.7
Clinton	61	5	12.2
Lake Forest Park	44	4	11.0
Everett	28	10	2.8
Bothell	9	2	4.5
Brier	5	1	5.0
Shoreline	2	1	2.0
Seattle	1	1	1.0
<b>Totals</b>	<b>2,441</b>	<b>79</b>	<b>30.9</b>

## Noise Comment Map: By Zip Code

NOTES: Noise comments from households submitted without valid address information are not depicted on the map.

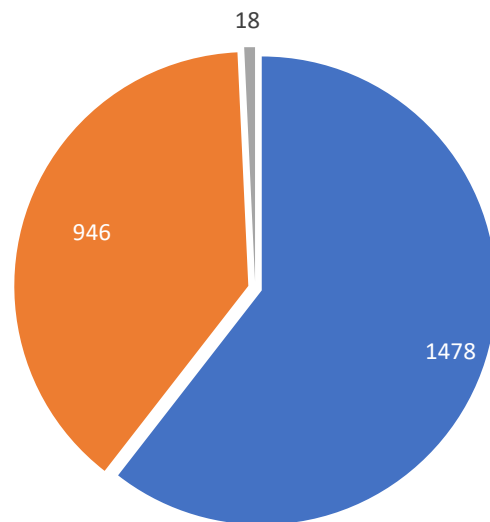


## Comment Breakdown: Types & Filing Method



- Loud      ■ Low      ■ Unspecified      ■ Off Course
- Military      ■ Helicopter      ■ Other

COMMENT TYPE	COMMENTS
Loud	2400
Low	28
Unspecified	11
Off Course	2
Military	2
Helicopter	1
Other	1

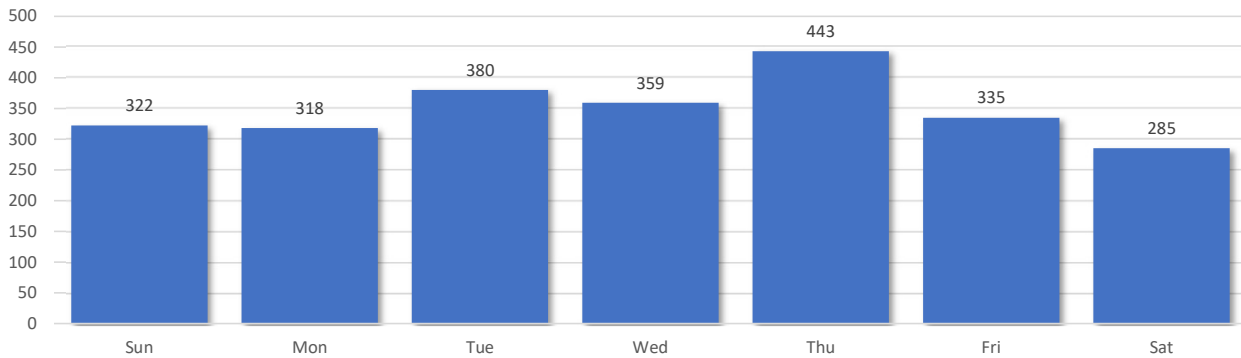


- Webform      ■ Web App      ■ Hotline

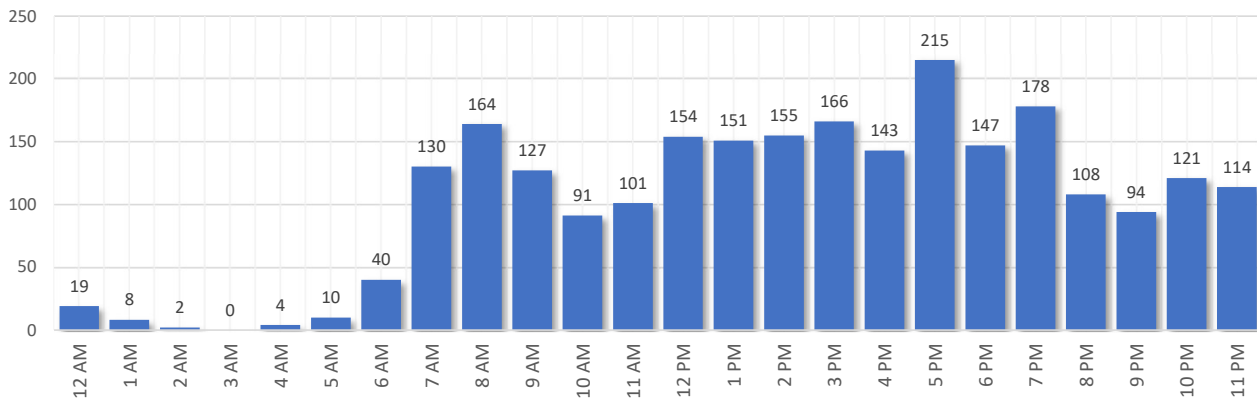
	METHOD RECEIVED	COUNT
Webform	Comment submitted via Paine Field website	1478
Web App	Third party web application	946
Hotline	Voicemail message via phone system	18

## Comment Breakdown: Day and Time

Comments by Day of Week



Comments by Time of Day

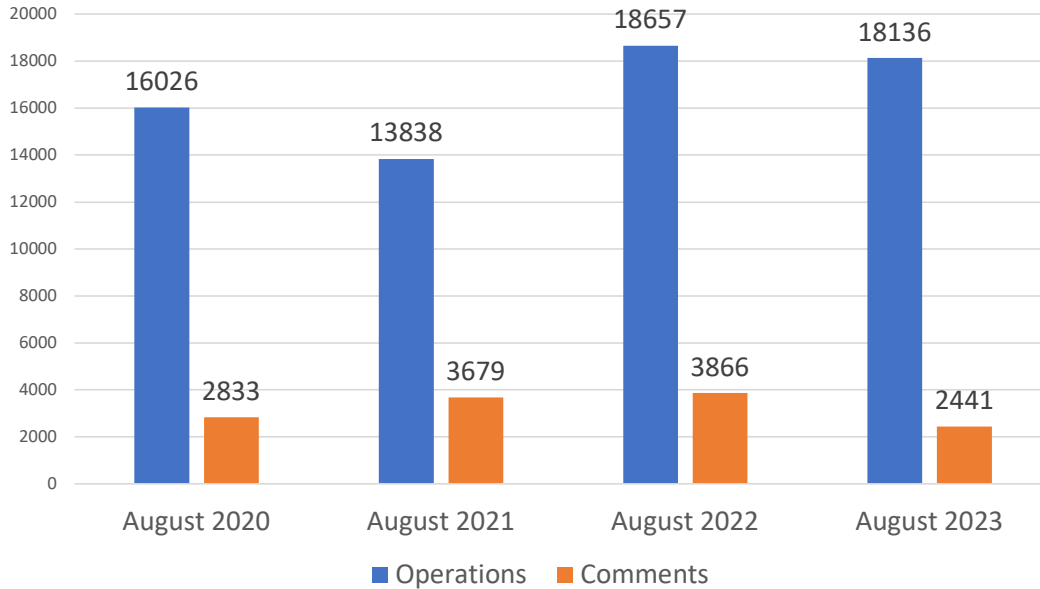




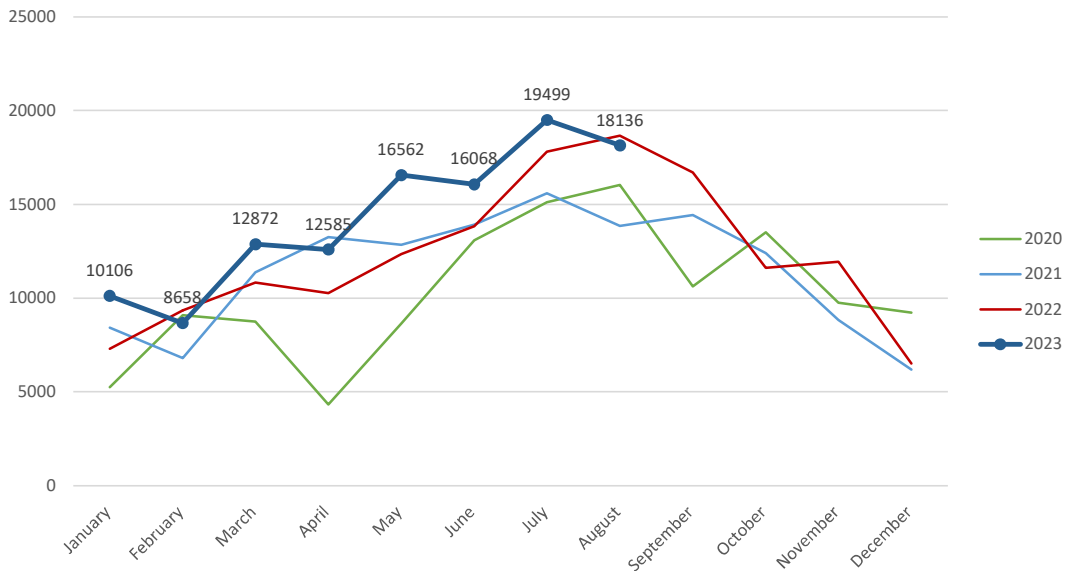
Aircraft Operations Summary:

During August 2023, the Paine Field Air Traffic Control Tower reported 18136 flight operations. This is a 2.7% decrease in operations compared to August 2022 which had 18657 operations. The four-year average for August is 16664 flight operations. Total operations for August were 8.8% above the 4-year average.

Monthly Operations VS Noise Comments



Monthly Operations Four Year Data



Paine Field Website: [www.paineairport.com](http://www.paineairport.com)  
 Noise Abatement Procedures: [www.paineairport.com/159/Noise-Abatement-Procedures](http://www.paineairport.com/159/Noise-Abatement-Procedures)  
 Paine Field Noise FAQ: [www.paineairport.com/215/Noise-FAQs](http://www.paineairport.com/215/Noise-FAQs)  
 To submit a noise comment online: [www.planenoise.com/kpae](http://www.planenoise.com/kpae)  
 To submit a noise comment by phone: (425) 284-0500