

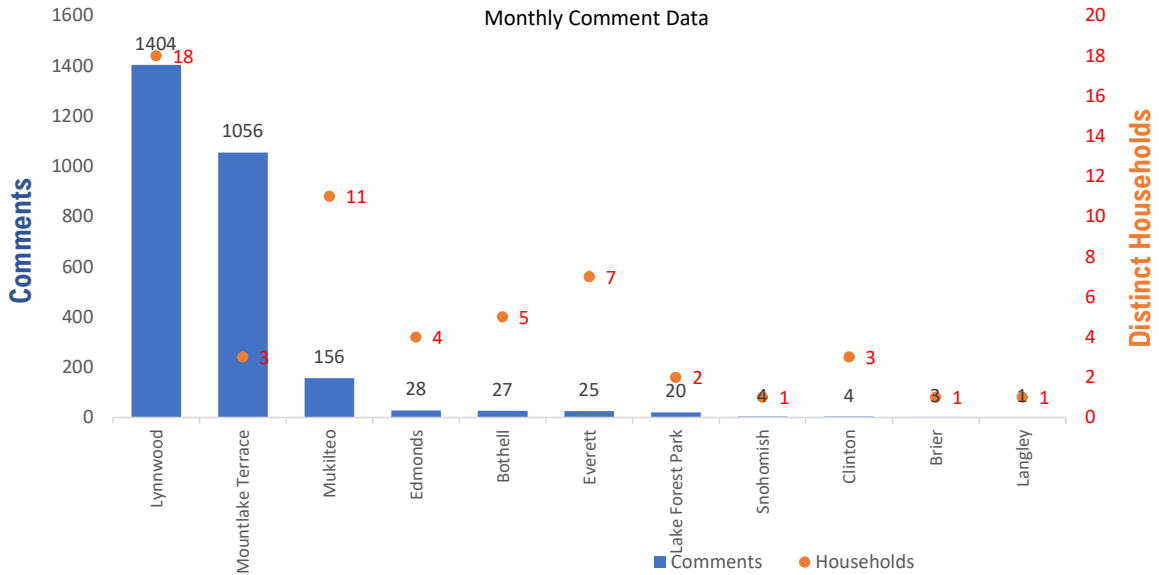


## Monthly Totals & Trends

**2,728**                      **56**                      **268**                      **2,529 (92.7%)**  
 Noise Comments                      Distinct Households                      Distinct Households YTD                      Comments by top 10 households

Paine Field – Snohomish County Airport uses a variety of methods to identify, track, and reduce the impact of aircraft noise on the surrounding communities. Noise comments are managed using a third-party application that correlates each complaint with a specific flight to help airport staff identify the primary causes of noise. The airport does not have the authority to restrict aircraft operations or change aircraft flight paths. Instead, the airport relies on pilots following the published voluntary noise abatement procedures. Several factors may require a pilot to deviate from these procedures including air traffic control instruction or safety considerations. Paine Field – Snohomish County Airport is owned and operated by Snohomish County in compliance with federal aviation regulations. Because the airport operates under the guidance of federal regulations, its facilities must remain open to users of the national airspace system 24 hours a day, 365 days a year.

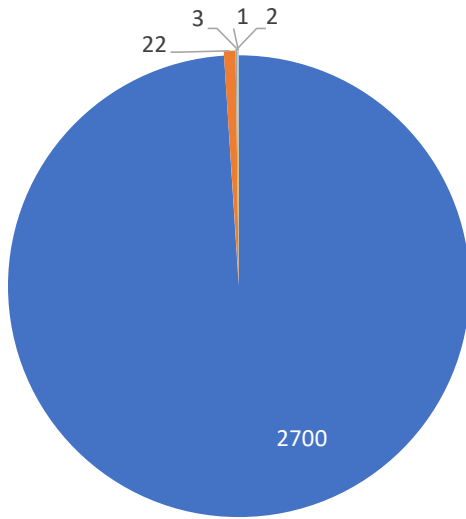
### Monthly Totals & Trends: By City



CITY	COMMENTS	DISTINCT HOUSEHOLDS	AVG COMMENTS/ HOUSEHOLD
Lynnwood	1,404	18	78.0
Mountlake Terrace	1,056	3	352.0
Mukilteo	156	11	14.2
Edmonds	28	4	7.0
Bothell	27	5	5.4
Everett	25	7	3.6
Lake Forest Park	20	2	10.0
Snohomish	4	1	4.0
Clinton	4	3	1.3
Brier	3	1	3.0
Langley	1	1	1.0
<b>Totals</b>	<b>2,728</b>	<b>56</b>	<b>48.7</b>

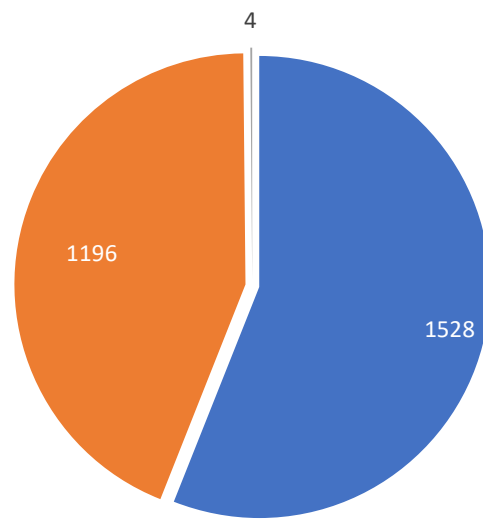


## Comment Breakdown: Types & Filing Method



■ Loud ■ Low ■ Other ■ Unspecified ■ Military

COMMENT TYPE	COMMENTS
Loud	2700
Low	22
Other	3
Unspecified	2
Military	1

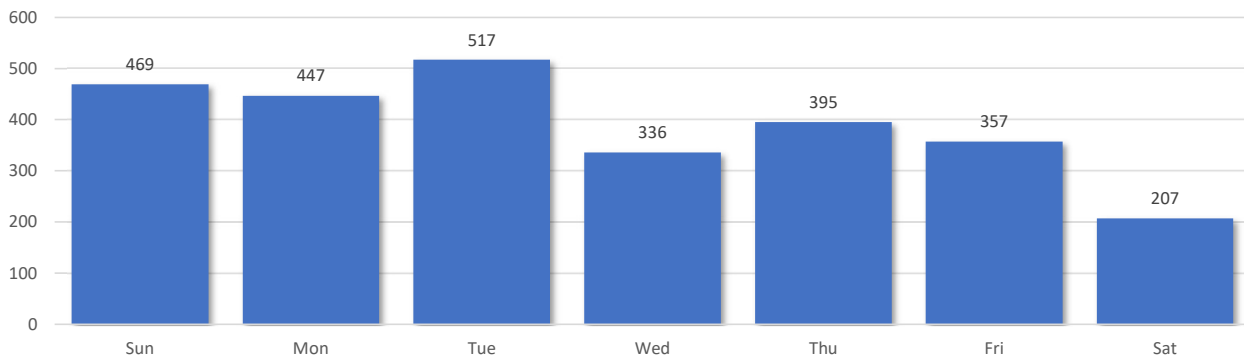


■ Webform ■ Web App ■ Hotline

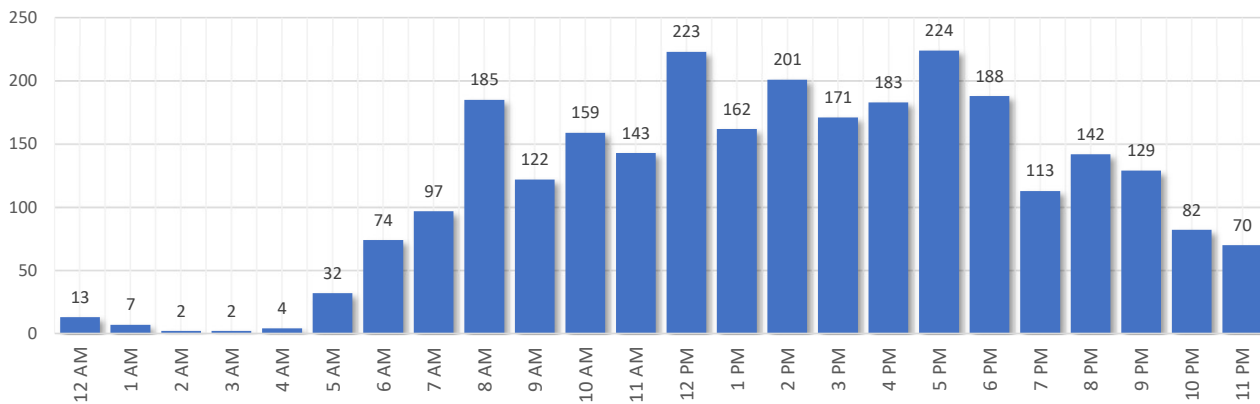
	METHOD RECEIVED	COUNT
Webform	Comment submitted via Paine Field website	1528
Web App	Third party web application	1196
Hotline	Voicemail message via phone system	4

## Comment Breakdown: Day and Time

Comments by Day of Week



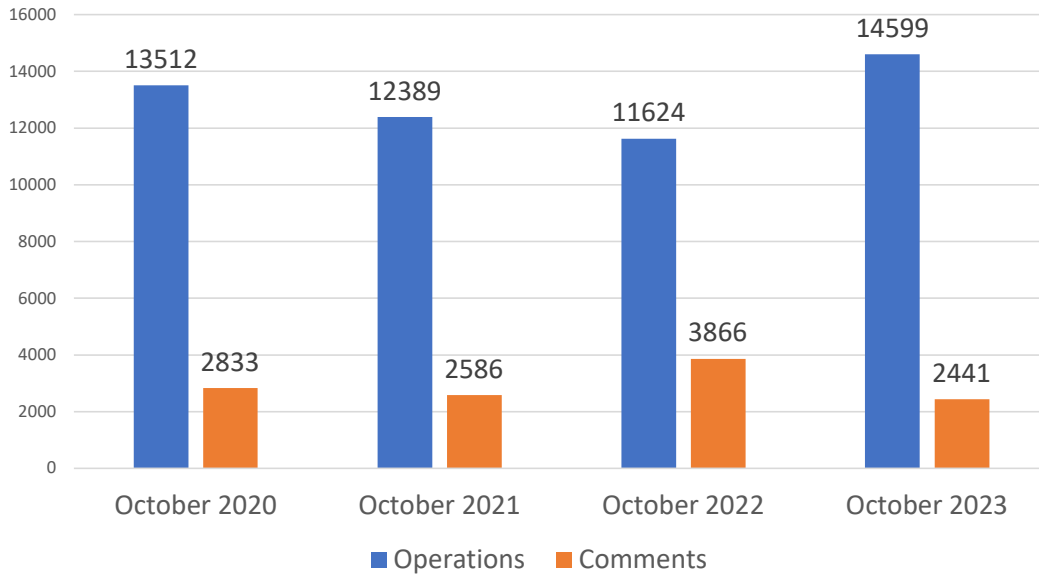
Comments by Time of Day



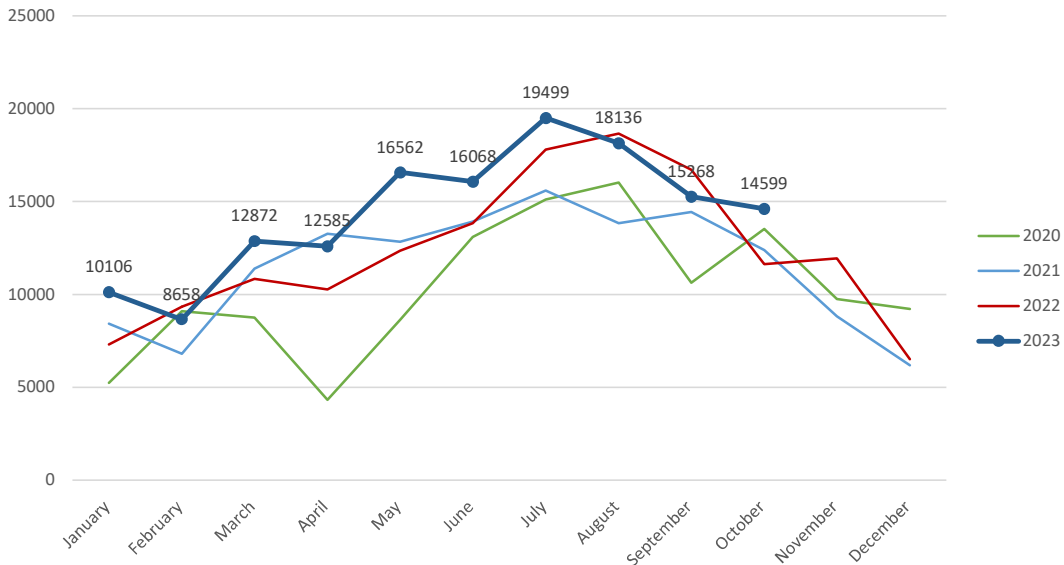
Aircraft Operations Summary:

During October 2023, the Paine Field Air Traffic Control Tower reported 14599 flight operations. This is a 25.5% increase in operations compared to October 2022 which had 11624 operations. The four-year average for October is 13031 flight operations. Total operations for October were 12% above the 4-year average.

Monthly Operations VS Noise Comments



Monthly Operations Four Year Data



Paine Field Website: [www.paineairport.com](http://www.paineairport.com)  
 Noise Abatement Procedures: [www.paineairport.com/159/Noise-Abatement-Procedures](http://www.paineairport.com/159/Noise-Abatement-Procedures)  
 Paine Field Noise FAQ: [www.paineairport.com/215/Noise-FAQs](http://www.paineairport.com/215/Noise-FAQs)  
 To submit a noise comment online: [www.planenoise.com/kpae](http://www.planenoise.com/kpae)  
 To submit a noise comment by phone: (425) 284-0500