

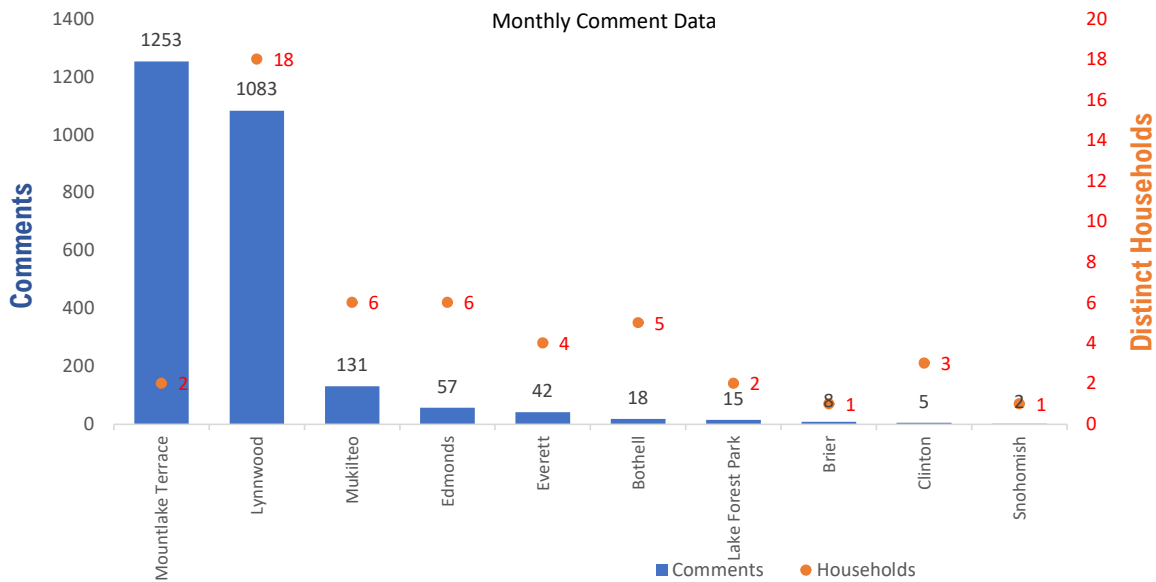


Monthly Totals & Trends

2,614
Noise Comments
48
Distinct Households
275
Distinct Households YTD
2,421 (92.6%)
Comments by top 10 households

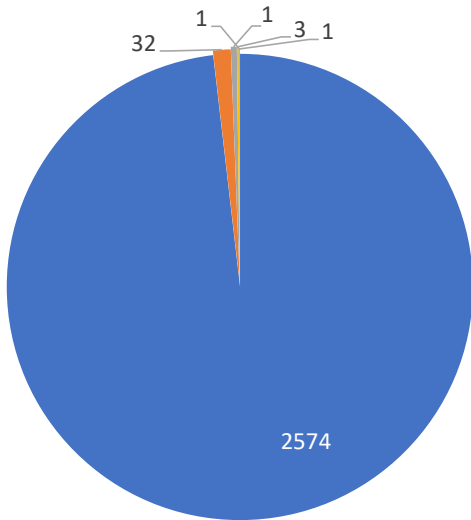
Paine Field – Snohomish County Airport uses a variety of methods to identify, track, and reduce the impact of aircraft noise on the surrounding communities. Noise comments are managed using a third-party application that correlates each complaint with a specific flight to help airport staff identify the primary causes of noise. The airport does not have the authority to restrict aircraft operations or change aircraft flight paths. Instead, the airport relies on pilots following the published voluntary noise abatement procedures. Several factors may require a pilot to deviate from these procedures including air traffic control instruction or safety considerations. Paine Field – Snohomish County Airport is owned and operated by Snohomish County in compliance with federal aviation regulations. Because the airport operates under the guidance of federal regulations, its facilities must remain open to users of the national airspace system 24 hours a day, 365 days a year.

Monthly Totals & Trends: By City



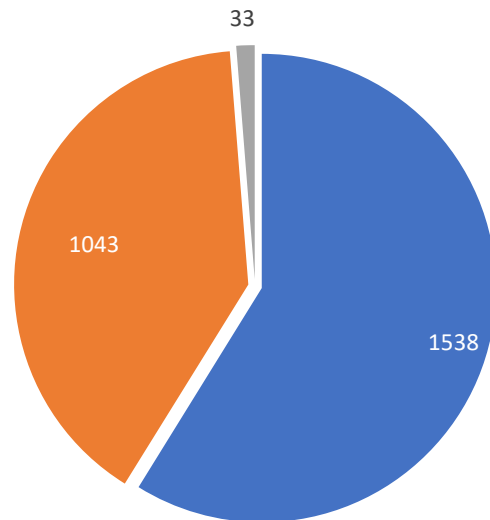
CITY	COMMENTS	DISTINCT HOUSEHOLDS	AVG COMMENTS/HOUSEHOLD
Lynnwood	1,404	18	78.0
Mountlake Terrace	1,056	3	352.0
Mukilteo	156	11	14.2
Edmonds	28	4	7.0
Bothell	27	5	5.4
Everett	25	7	3.6
Lake Forest Park	20	2	10.0
Snohomish	4	1	4.0
Clinton	4	3	1.3
Brier	3	1	3.0
Langlely	1	1	1.0
Totals	2,614	48	54.5

Comment Breakdown: Types & Filing Method



■ Loud ■ Low ■ Unspecified ■ Runup ■ Helicopter ■ Other

COMMENT TYPE	COMMENTS
Loud	2574
Low	32
Unspecified	11
Runup	3
Helicopter	1
Other	1

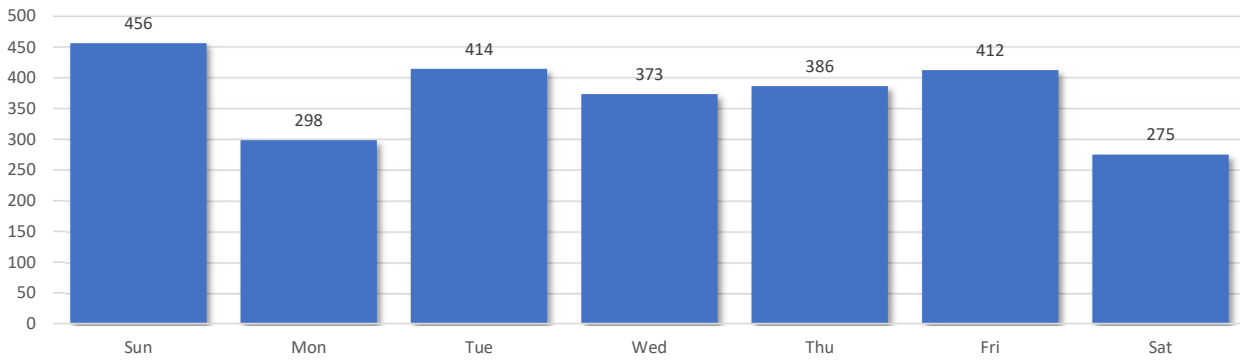


■ Webform ■ Web App ■ Hotline

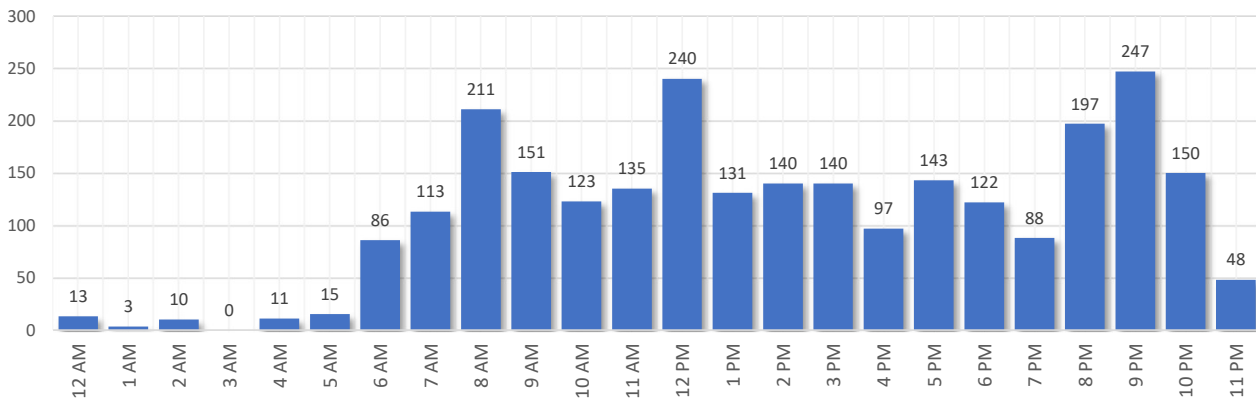
	METHOD RECEIVED	COUNT
Webform	Comment submitted via Paine Field website	1538
Web App	Third party web application	1043
Hotline	Voicemail message via phone system	33

Comment Breakdown: Day and Time

Comments by Day of Week



Comments by Time of Day

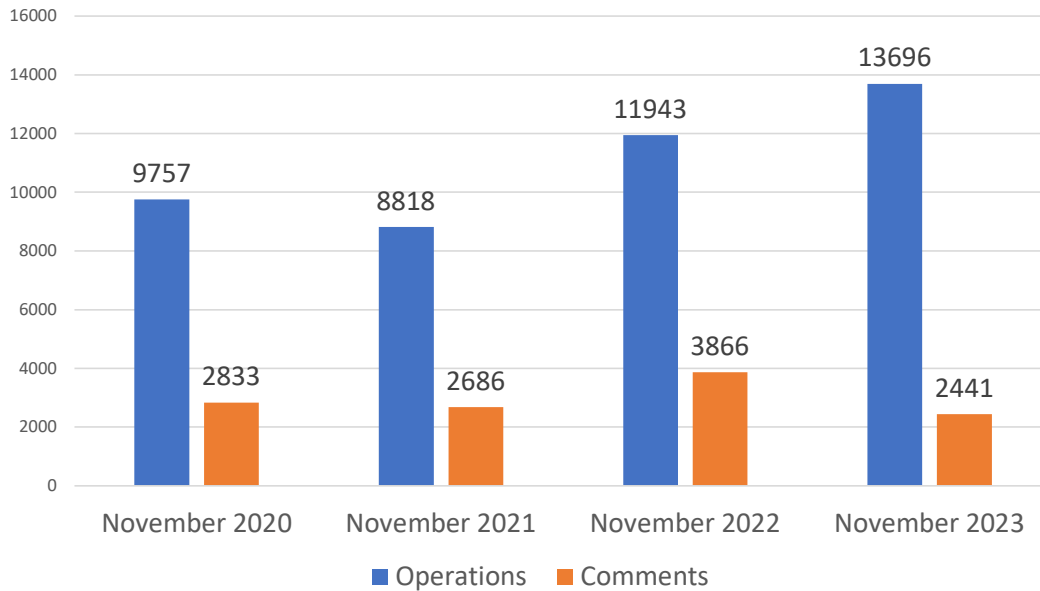




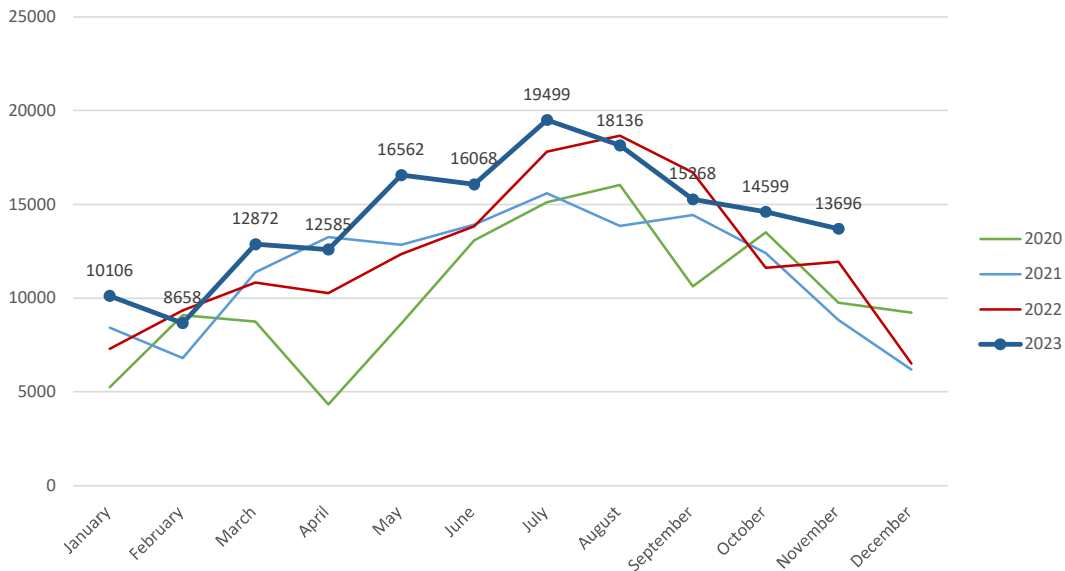
Aircraft Operations Summary:

During November 2023, the Paine Field Air Traffic Control Tower reported 13696 flight operations. This is a 14.6% increase in operations compared to November 2022 which had 11943 operations. The four-year average for November is 11053 flight operations. Total operations for November were 23.9% above the 4-year average.

Monthly Operations VS Noise Comments



Monthly Operations Four Year Data



Paine Field Website: www.paineairport.com
 Noise Abatement Procedures: www.paineairport.com/159/Noise-Abatement-Procedures
 Paine Field Noise FAQ: www.paineairport.com/215/Noise-FAQs
 To submit a noise comment online: www.planenoise.com/kpae
 To submit a noise comment by phone: (425) 284-0500