

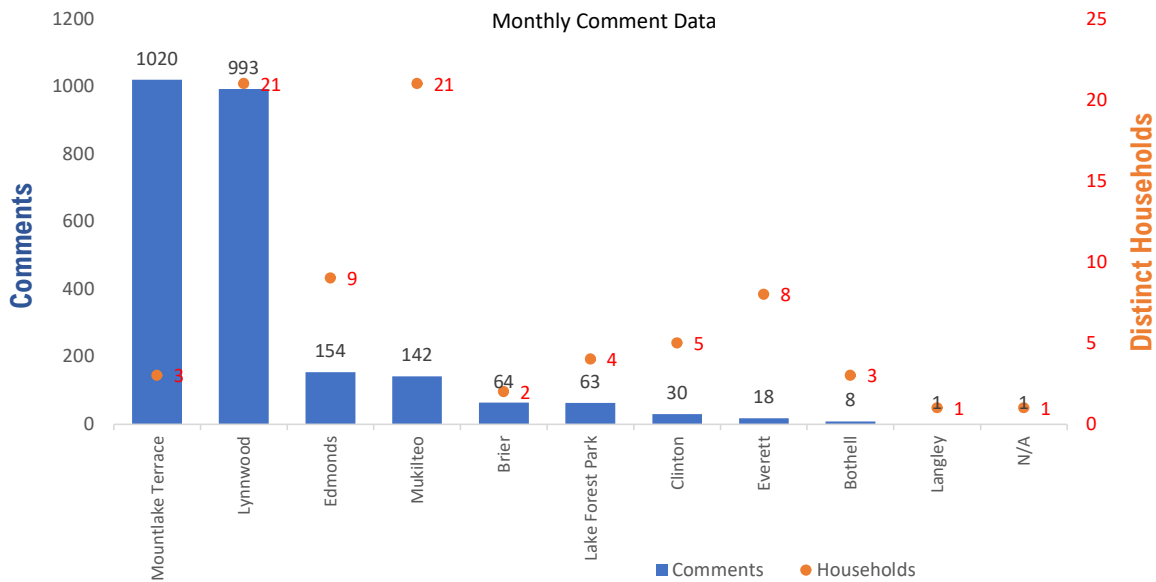


Monthly Totals & Trends

2,496
Noise Comments
79
Distinct Households
195
Distinct Households YTD
2,251 (90.2%)
Comments by top 10 households

Paine Field – Snohomish County Airport uses a variety of methods to identify, track, and reduce the impact of aircraft noise on the surrounding communities. Noise comments are managed using a third-party application that correlates each complaint with a specific flight to help airport staff identify the primary causes of noise. The airport does not have the authority to restrict aircraft operations or change aircraft flight paths. Instead, the airport relies on pilots following the published voluntary noise abatement procedures. Several factors may require a pilot to deviate from these procedures including air traffic control instruction or safety considerations. Paine Field – Snohomish County Airport is owned and operated by Snohomish County in compliance with federal aviation regulations. Because the airport operates under the guidance of federal regulations, its facilities must remain open to users of the national airspace system 24 hours a day, 365 days a year.

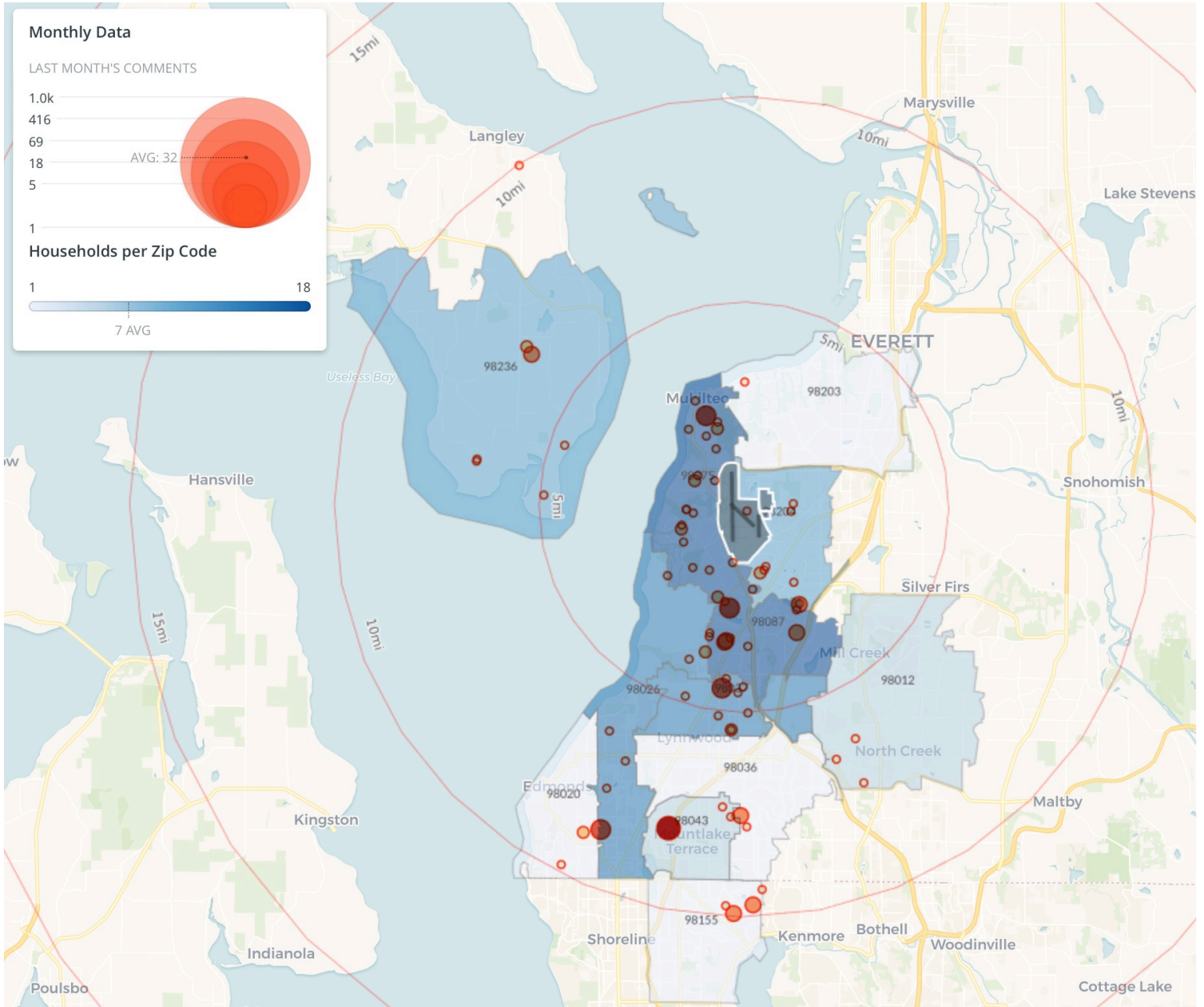
Monthly Totals & Trends: By City



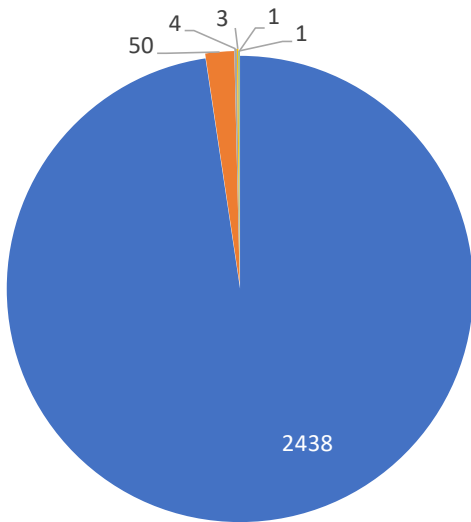
CITY	COMMENTS	DISTINCT HOUSEHOLDS	AVG COMMENTS/ HOUSEHOLD
Mountlake Terrace	1,020	3	340.0
Lynnwood	993	21	47.3
Edmonds	154	9	17.1
Mukilteo	142	21	6.8
Brier	64	2	32.0
Lake Forest Park	63	4	15.8
Clinton	30	5	6.0
Everett	18	8	2.3
Bothell	8	3	2.7
Island County	2	1	2.0
N/A	1	1	1.0
Langley	1	1	1.0
Totals	2,496	79	31.6

Noise Comment Map: By Zip Code

NOTES: Noise comments from households submitted without valid address information are not depicted on the map.

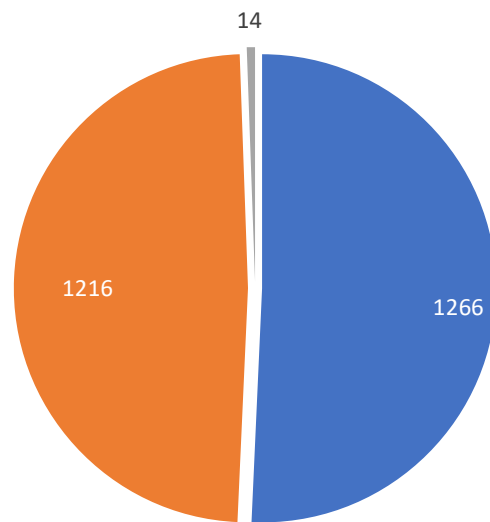


Comment Breakdown: Types & Filing Method



■ Loud ■ Low ■ Unspecified ■ Other ■ Runup ■ Off Course

COMMENT TYPE	COMMENTS
Loud	2438
Low	50
Unspecified	4
Other	3
Runup	1
Off Course	1

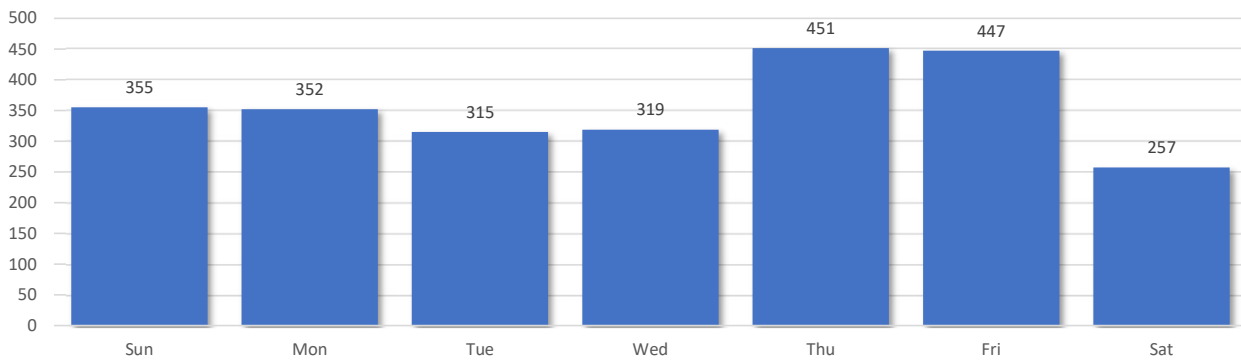


■ Webform ■ Web App ■ Hotline

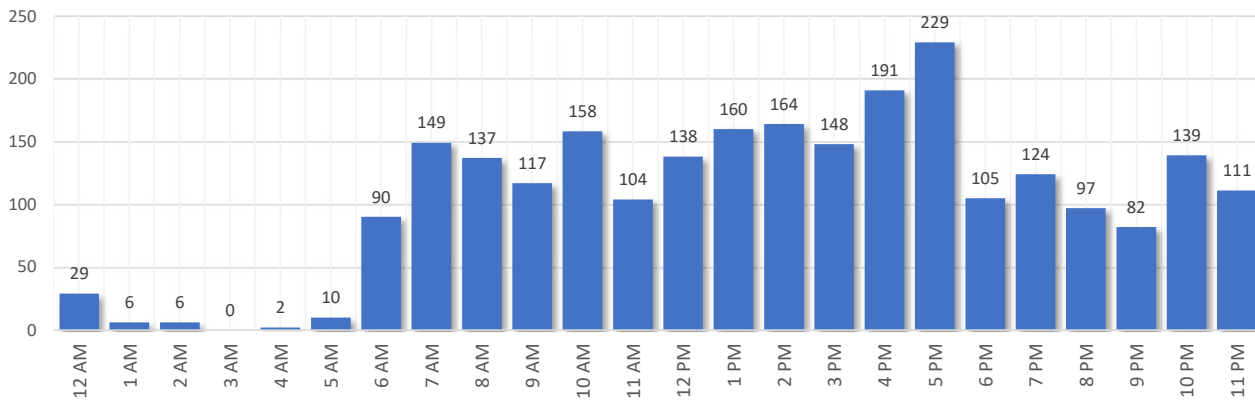
	METHOD RECEIVED	COUNT
Webform	Comment submitted via Paine Field website	1266
Web App	Third party web application	1216
Hotline	Voicemail message via phone system	14

Comment Breakdown: Day and Time

Comments by Day of Week



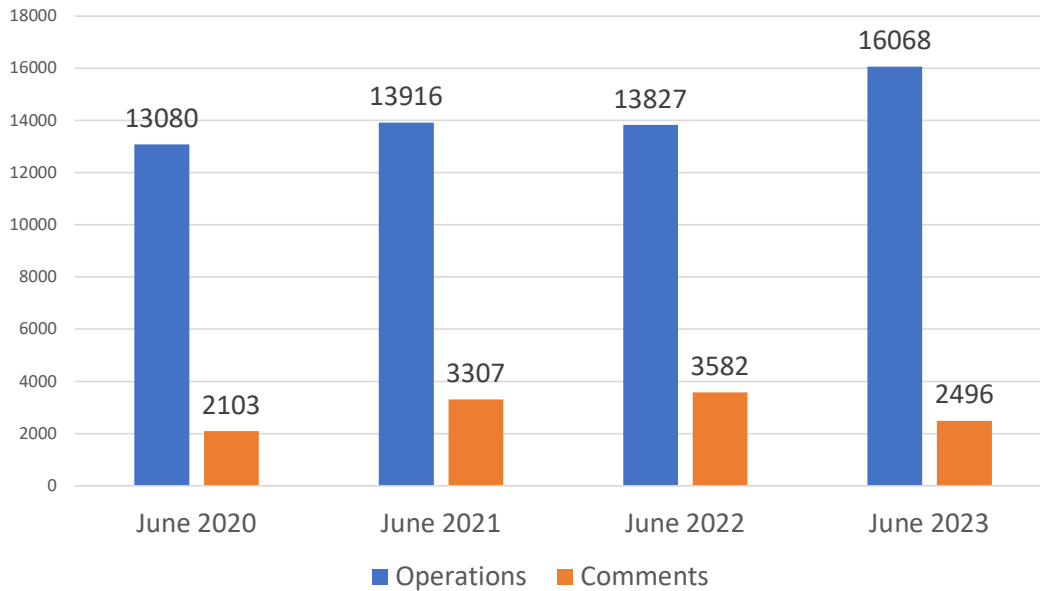
Comments by Time of Day



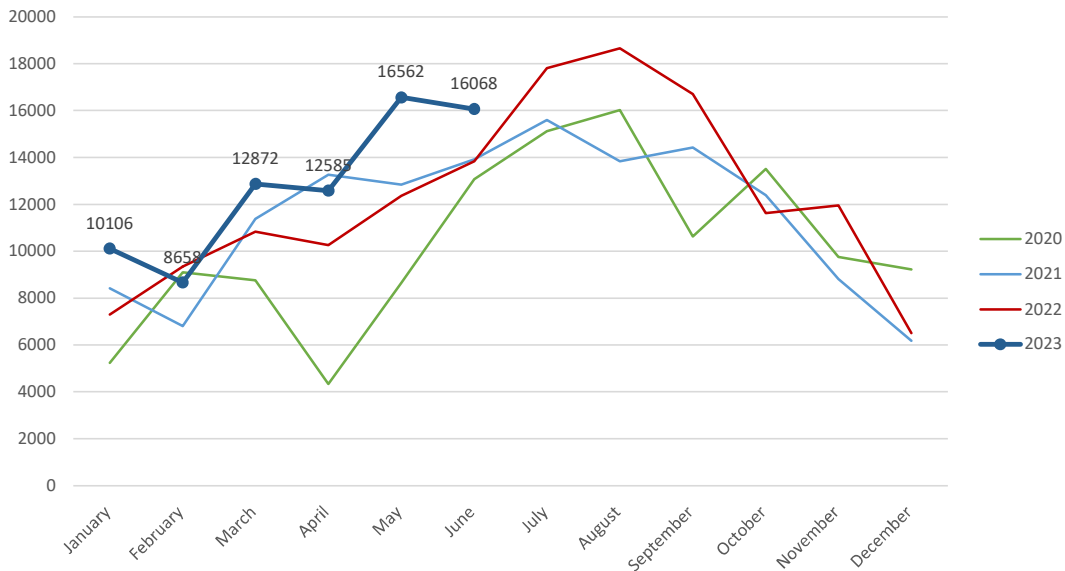
Aircraft Operations Summary:

During June 2023, the Paine Field Air Traffic Control Tower reported 16068 flight operations. This is a 16.2% increase in operations compared to June 2022 which had 13827 operations. The four-year average for June is 14222 flight operations. Total operations for June were 12.9% above the 4-year average.

Monthly Operations VS Noise Comments



Monthly Operations Four Year Data



Paine Field Website: www.paineairport.com
 Noise Abatement Procedures: www.paineairport.com/159/Noise-Abatement-Procedures
 Paine Field Noise FAQ: www.paineairport.com/215/Noise-FAQs
 To submit a noise comment online: www.planenoise.com/kpae
 To submit a noise comment by phone: (425) 284-0500