

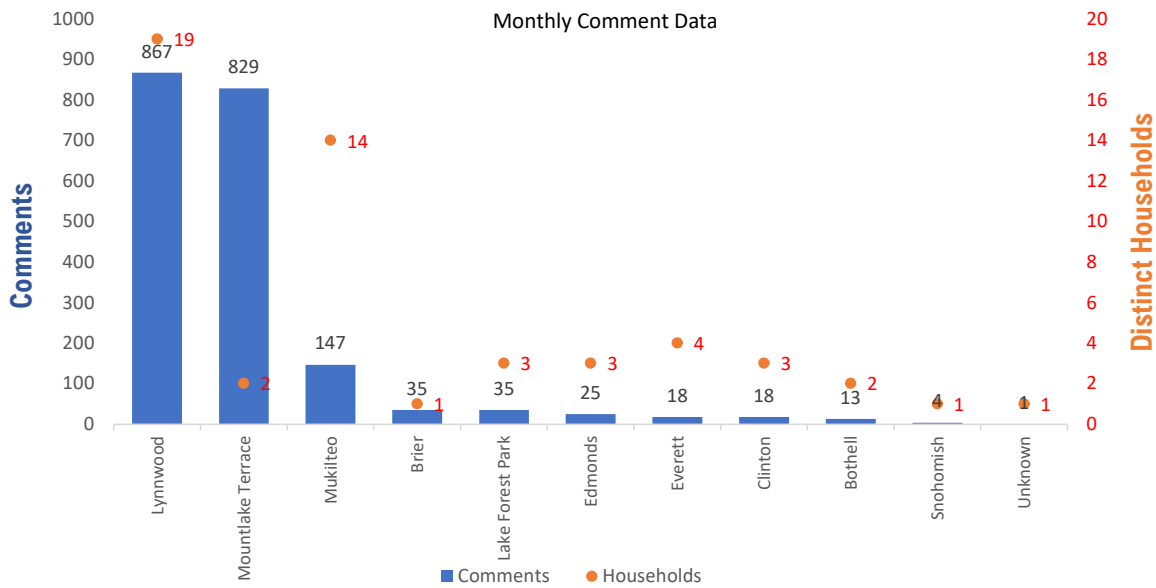


Monthly Totals & Trends

1,992 53 70 1,789 (89.8%)
 Noise Comments Distinct Households Distinct Households YTD Comments by top 10 households

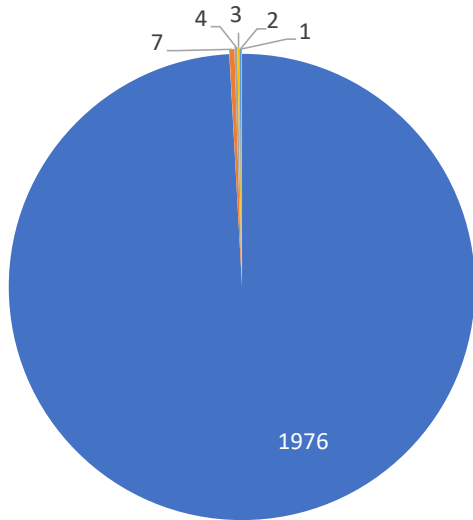
Paine Field – Snohomish County Airport uses a variety of methods to identify, track, and reduce the impact of aircraft noise on the surrounding communities. Noise comments are managed using a third-party application that correlates each complaint with a specific flight to help airport staff identify the primary causes of noise. The airport does not have the authority to restrict aircraft operations or change aircraft flight paths. Instead, the airport relies on pilots following the published voluntary noise abatement procedures. Several factors may require a pilot to deviate from these procedures including air traffic control instruction or safety considerations. Paine Field – Snohomish County Airport is owned and operated by Snohomish County in compliance with federal aviation regulations. Because the airport operates under the guidance of federal regulations, its facilities must remain open to users of the national airspace system 24 hours a day, 365 days a year.

Monthly Totals & Trends: By City



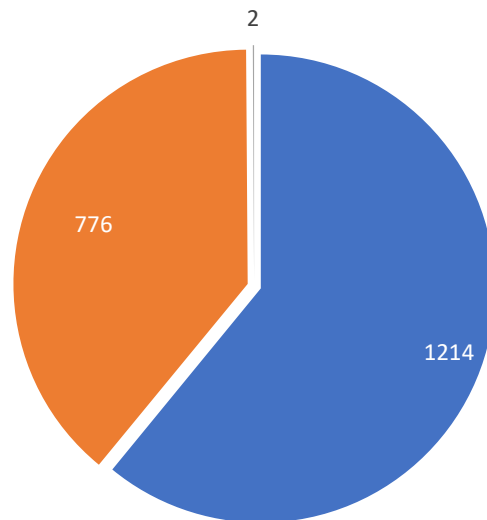
CITY	COMMENTS	DISTINCT HOUSEHOLDS	AVG COMMENTS/ HOUSEHOLD
Mountlake Terrace	829	2	414.5
Lake Forest Park	35	3	11.7
Edmonds	25	3	8.3
Brier	35	1	35.0
Lynnwood	867	19	45.6
Bothell	13	2	6.5
Mukilteo	147	14	10.5
Everett	18	4	4.5
Clinton	18	3	6.0
Snohomish	4	1	4.0
Unknown	1	1	1.0
Totals	1,992	53	37.6

Comment Breakdown: Types & Filing Method



■ Loud ■ Low ■ Helicopter ■ Runup ■ Other ■ Unspecified

COMMENT TYPE	COMMENTS
Loud	1976
Low	7
Helicopter	4
Runup	3
Other	2
Unspecified	1

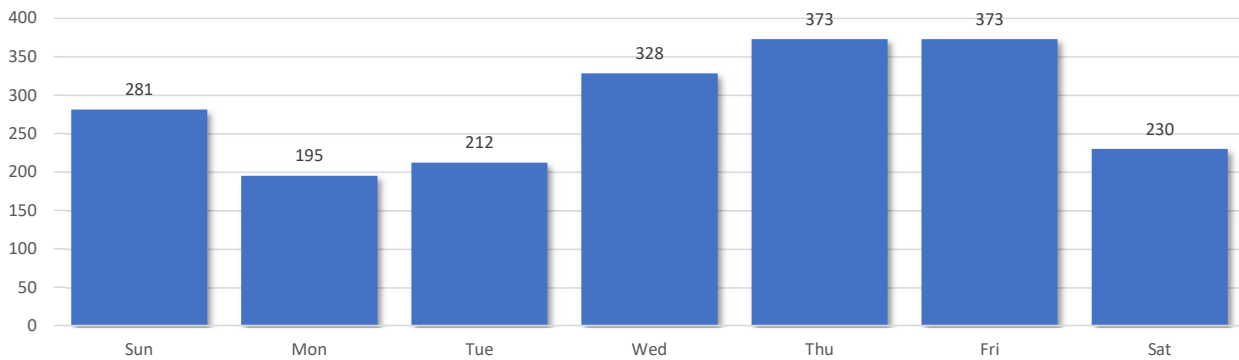


■ Webform ■ Web App ■ Hotline

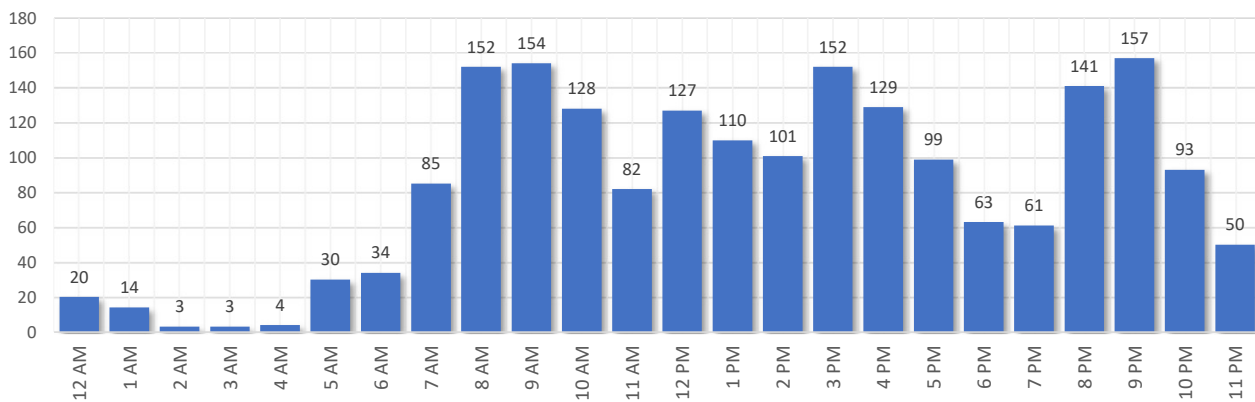
	METHOD RECEIVED	COUNT
Webform	Comment submitted via Paine Field website	1214
Web App	Third party web application	776
Hotline	Voicemail message via phone system	2

Comment Breakdown: Day and Time

Comments by Day of Week



Comments by Time of Day

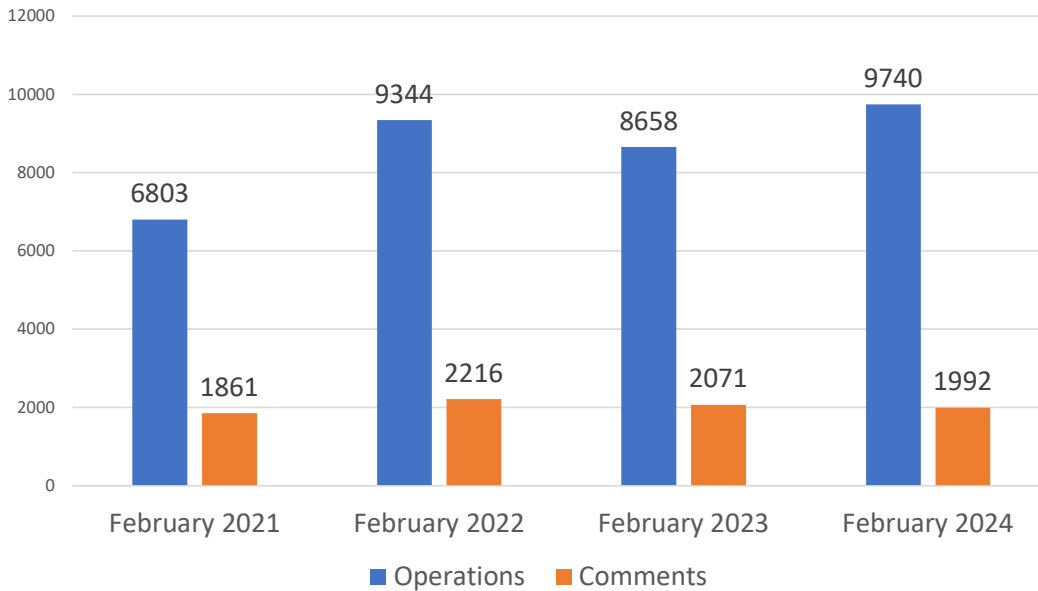




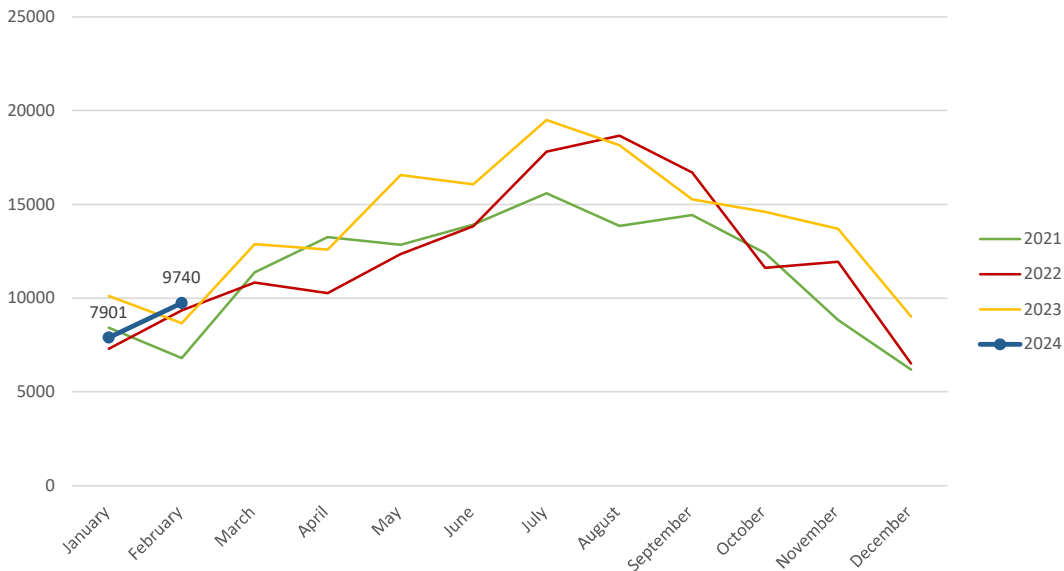
Aircraft Operations Summary:

During February 2024, the Paine Field Air Traffic Control Tower reported 9740 flight operations. This is a 12.4% increase in operations compared to February 2023 which had 8658 operations. The four-year average for February is 8636 flight operations. Total operations for February were 12.7% above the 4-year average.

Monthly Operations VS Noise Comments



Monthly Operations Four Year Data



Paine Field Website: www.paineairport.com
 Noise Abatement Procedures: www.paineairport.com/159/Noise-Abatement-Procedures
 Paine Field Noise FAQ: www.paineairport.com/215/Noise-FAQs
 To submit a noise comment online: www.planenoise.com/kpae
 To submit a noise comment by phone: (425) 284-0500