

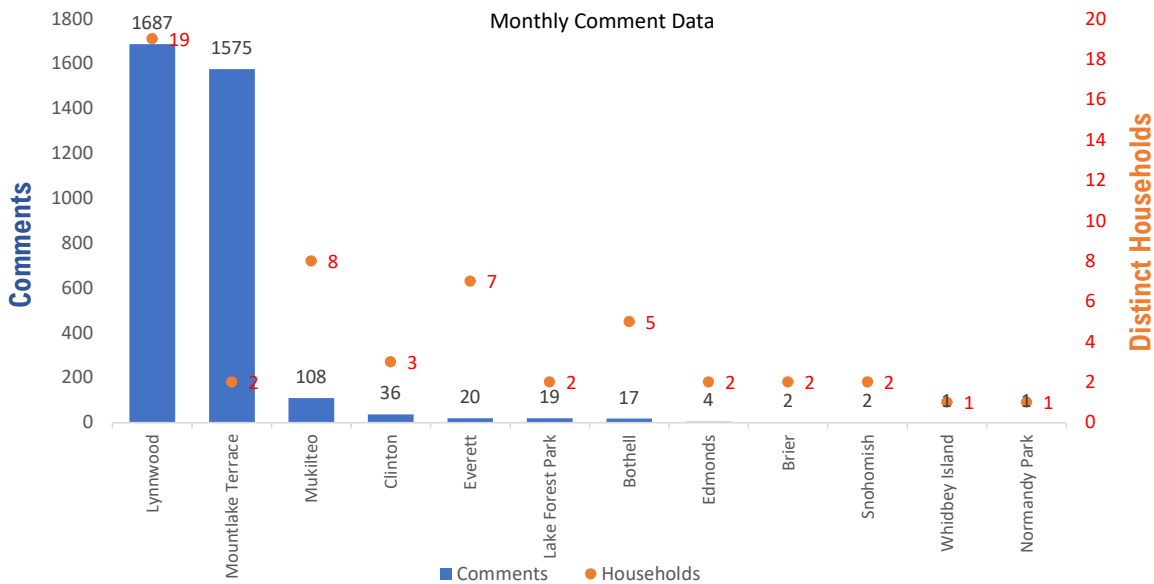


Monthly Totals & Trends

3,472 54 157 3,315 (95.5%)
 Noise Comments Distinct Households Distinct Households YTD Comments by top 10 households

Paine Field – Snohomish County Airport uses a variety of methods to identify, track, and reduce the impact of aircraft noise on the surrounding communities. Noise comments are managed using a third-party application that correlates each complaint with a specific flight to help airport staff identify the primary causes of noise. The airport does not have the authority to restrict aircraft operations or change aircraft flight paths. Instead, the airport relies on pilots following the published voluntary noise abatement procedures. Several factors may require a pilot to deviate from these procedures including air traffic control instruction or safety considerations. Paine Field – Snohomish County Airport is owned and operated by Snohomish County in compliance with federal aviation regulations. Because the airport operates under the guidance of federal regulations, its facilities must remain open to users of the national airspace system 24 hours a day, 365 days a year.

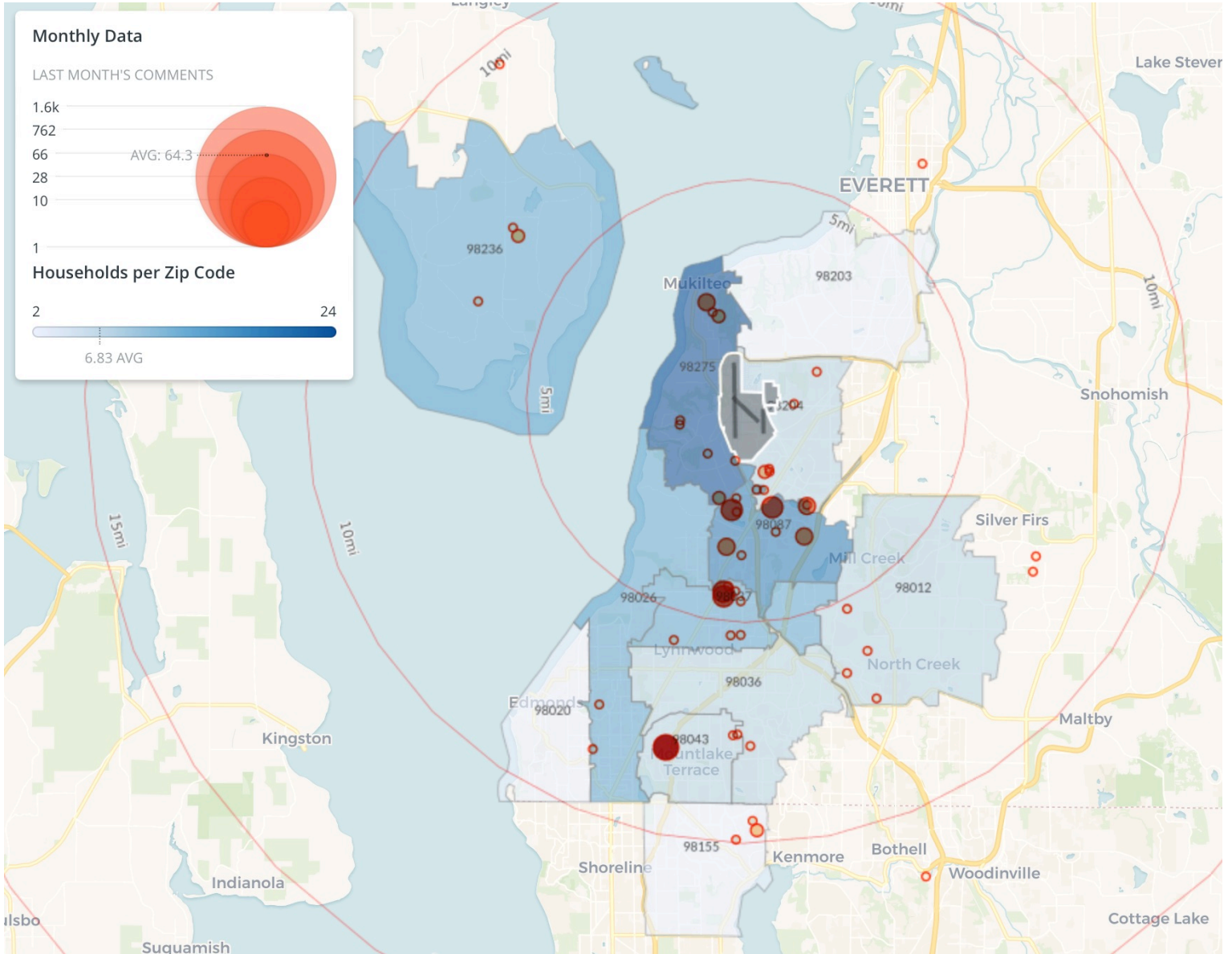
Monthly Totals & Trends: By City



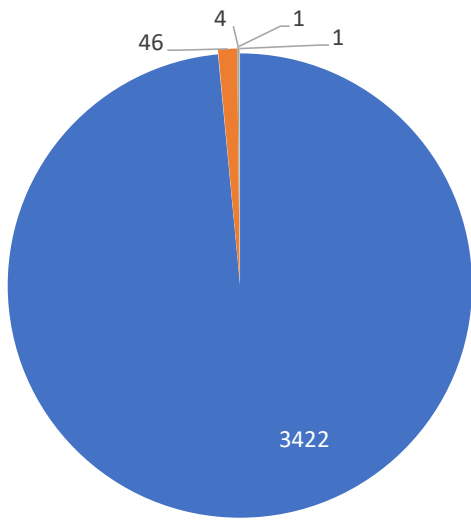
CITY	COMMENTS	DISTINCT HOUSEHOLDS	AVG COMMENTS/ HOUSEHOLD
Mountlake Terrace	1,575	2	787.5
Lake Forest Park	19	2	9.5
Edmonds	4	2	2.0
Brier	2	2	1.0
Lynnwood	1,687	19	88.8
Bothell	17	5	3.4
Mukilteo	108	8	13.5
Everett	20	7	2.9
Clinton	36	3	12.0
Snohomish	2	2	1.0
Normandy Park	1	1	1.0
Whidbey Island	1	1	1.0
Totals	3,472	54	64.3

Noise Comment Map: By Zip Code

NOTES: Noise comments from households submitted without valid address information are not depicted on the map.

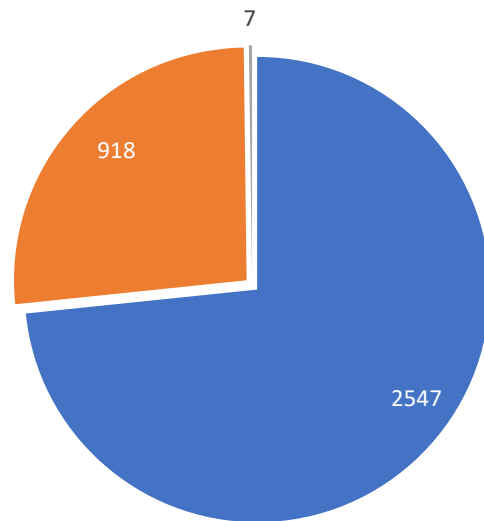


Comment Breakdown: Types & Filing Method



■ Loud ■ Low ■ Other ■ Helicopter ■ Unspecified

COMMENT TYPE	COMMENTS
Loud	3422
Low	46
Other	4
Helicopter	1
Unspecified	1

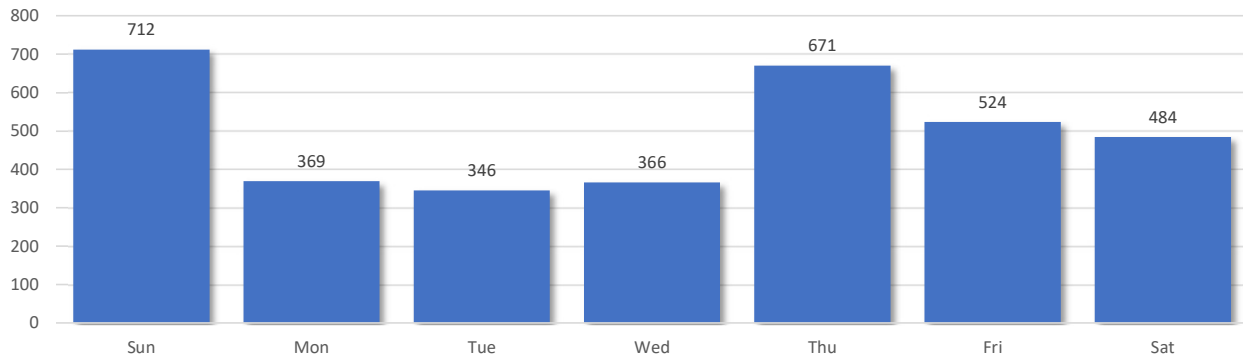


■ Webform ■ Web App ■ Hotline

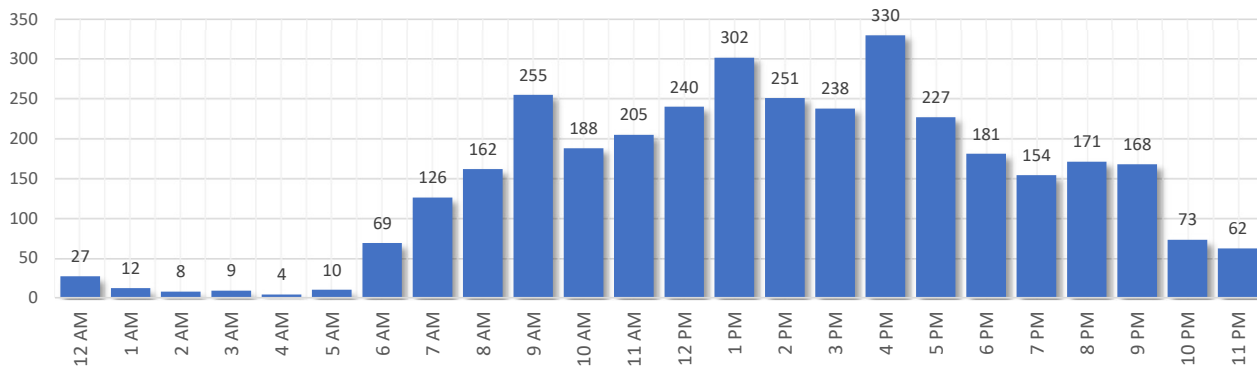
	METHOD RECEIVED	COUNT
Webform	Comment submitted via Paine Field website	2547
Web App	Third party web application	918
Hotline	Voicemail message via phone system	7

Comment Breakdown: Day and Time

Comments by Day of Week



Comments by Time of Day

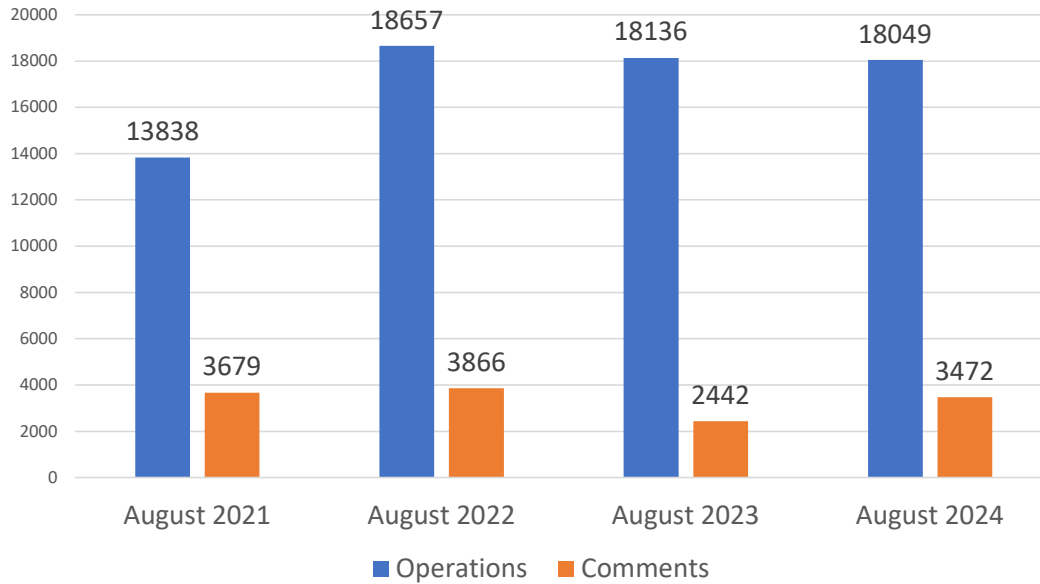




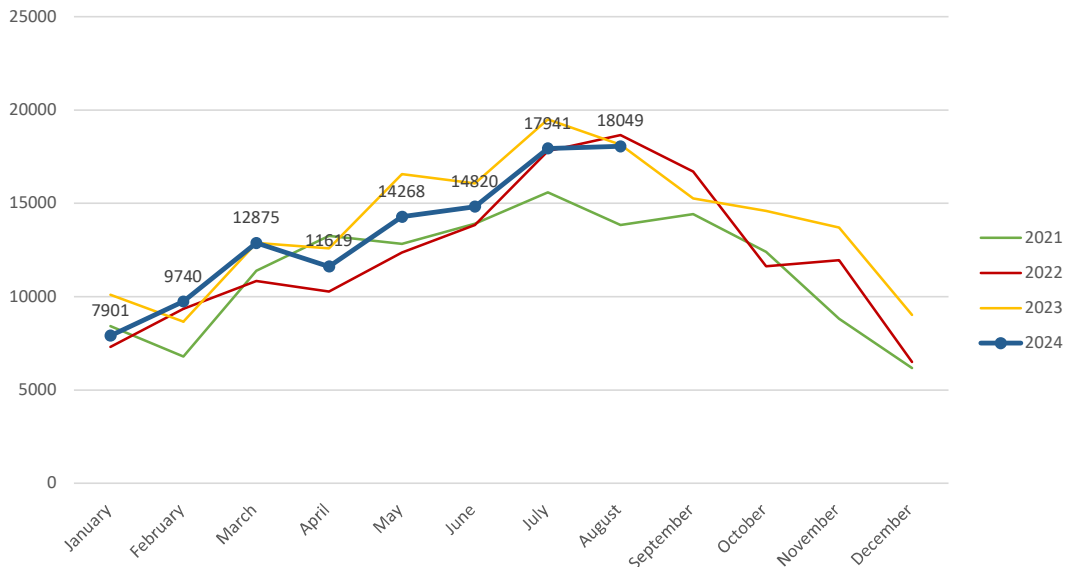
Aircraft Operations Summary:

During August 2024, the Paine Field Air Traffic Control Tower reported 18049 flight operations. This is a 0.4% decrease in operations compared to August 2023 which had 18136 operations. The four-year average for August is 17170 flight operations. Total operations for August were 5.1% above the 4-year average.

Monthly Operations VS Noise Comments



Monthly Operations Four Year Data



Paine Field Website: www.paineairport.com
 Noise Abatement Procedures: www.paineairport.com/159/Noise-Abatement-Procedures
 Paine Field Noise FAQ: www.paineairport.com/215/Noise-FAQs
 To submit a noise comment online: www.planenoise.com/kpae
 To submit a noise comment by phone: (425) 284-0500