

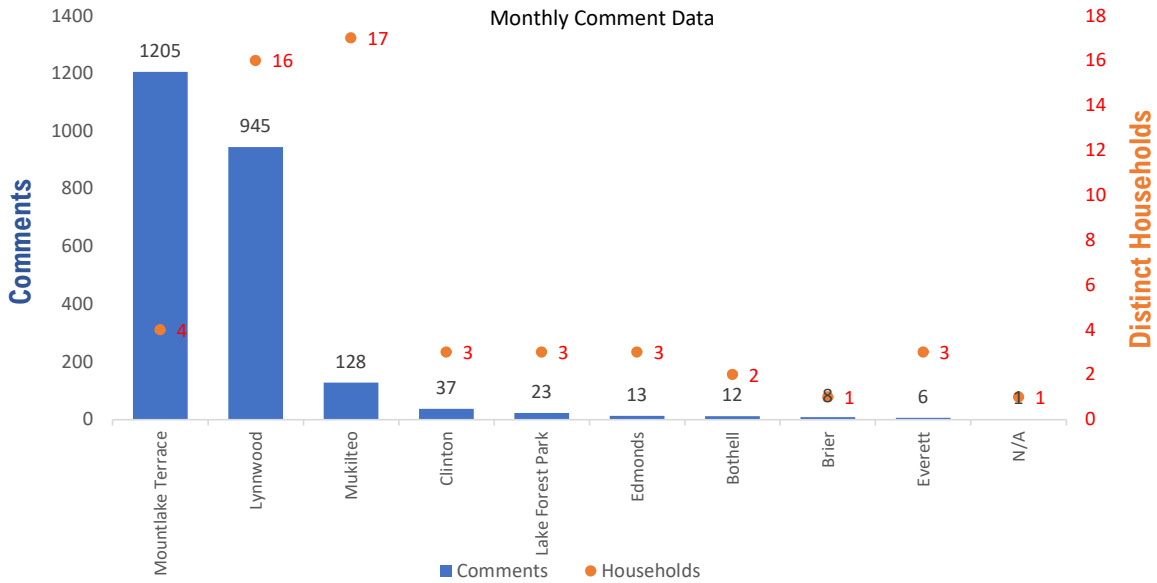


Monthly Totals & Trends

2,381 55 144 2,217 (93.1%)
 Noise Comments Distinct Households Distinct Households YTD Comments by top 10 households

Paine Field – Snohomish County Airport uses a variety of methods to identify, track, and reduce the impact of aircraft noise on the surrounding communities. Noise comments are managed using a third-party application that correlates each complaint with a specific flight to help airport staff identify the primary causes of noise. The airport does not have the authority to restrict aircraft operations or change aircraft flight paths. Instead, the airport relies on pilots following the published voluntary noise abatement procedures. Several factors may require a pilot to deviate from these procedures including air traffic control instruction or safety considerations. Paine Field – Snohomish County Airport is owned and operated by Snohomish County in compliance with federal aviation regulations. Because the airport operates under the guidance of federal regulations, its facilities must remain open to users of the national airspace system 24 hours a day, 365 days a year.

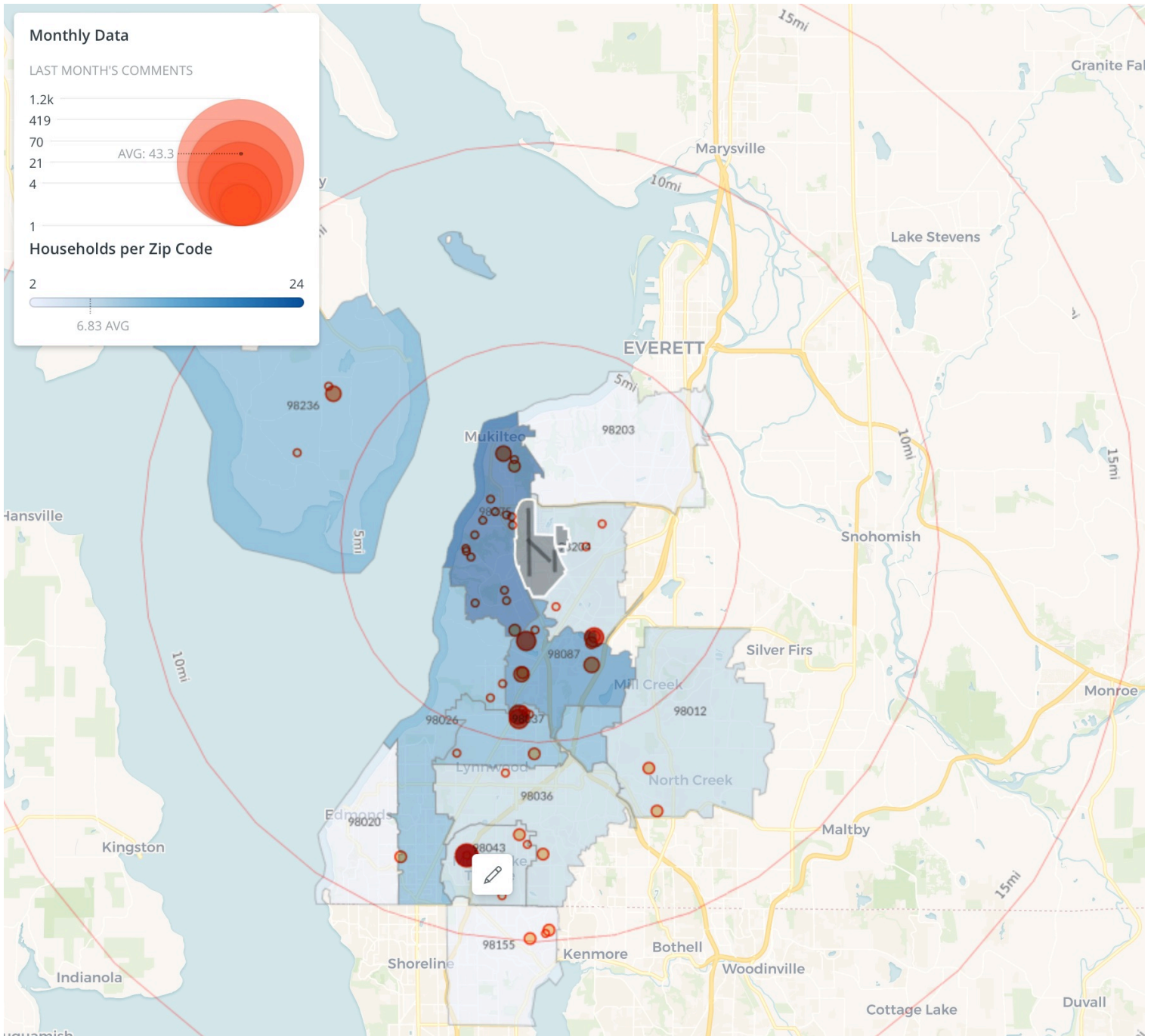
Monthly Totals & Trends: By City



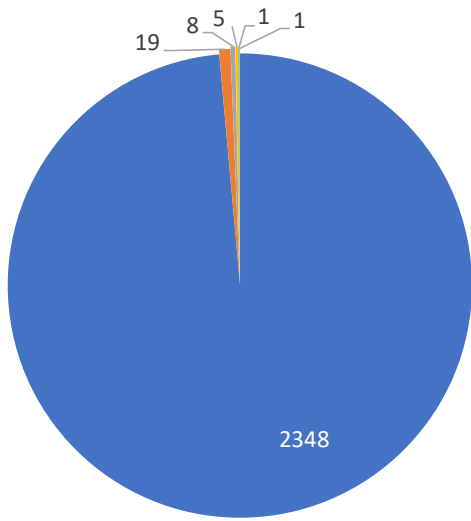
CITY	COMMENTS	DISTINCT HOUSEHOLDS	AVG COMMENTS/ HOUSEHOLD
Mountlake Terrace	1,205	4	301.3
Lake Forest Park	23	3	7.7
Edmonds	13	3	4.3
Brier	8	1	8.0
Lynnwood	945	16	59.1
Bothell	12	2	6.0
Mukilteo	128	17	7.5
Everett	6	3	2.0
Clinton	37	3	12.3
N/A	1	1	1.0
Snohomish County	2	1	2.0
Oak Harbor	1	1	1.0
Totals	2,381	55	43.3

Noise Comment Map: By Zip Code

NOTES: Noise comments from households submitted without valid address information are not depicted on the map.

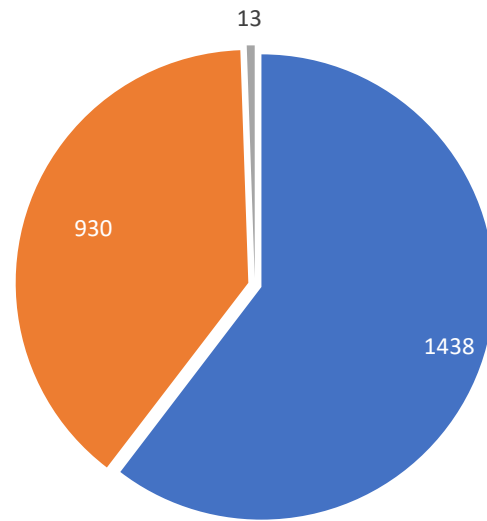


Comment Breakdown: Types & Filing Method



■ Loud ■ Low ■ Unspecified ■ Other ■ Runup ■ Helicopter

COMMENT TYPE	COMMENTS
Loud	2348
Low	19
Unspecified	8
Other	5
Runup	1
Helicopter	1

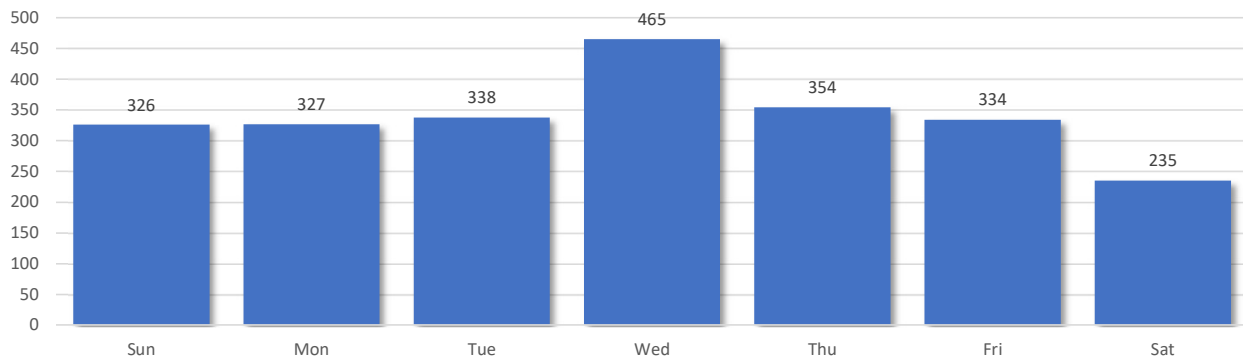


■ Webform ■ Web App ■ Hotline

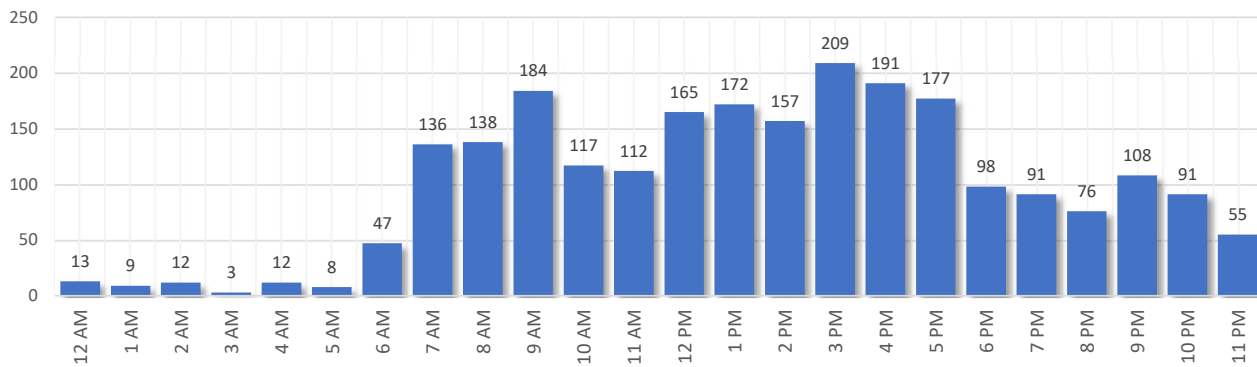
	METHOD RECEIVED	COUNT
Webform	Comment submitted via Paine Field website	1438
Web App	Third party web application	930
Hotline	Voicemail message via phone system	13

Comment Breakdown: Day and Time

Comments by Day of Week



Comments by Time of Day

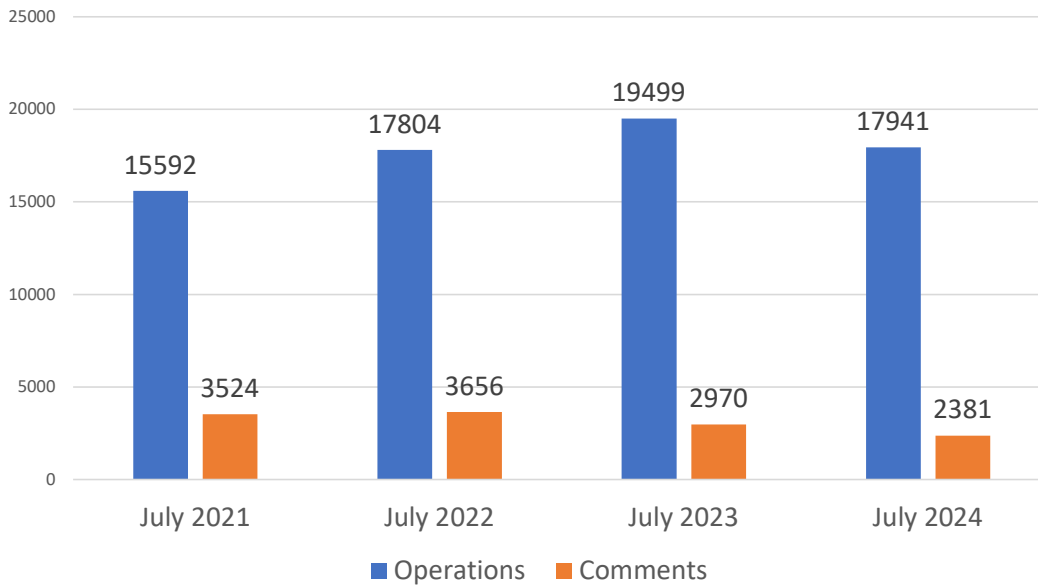




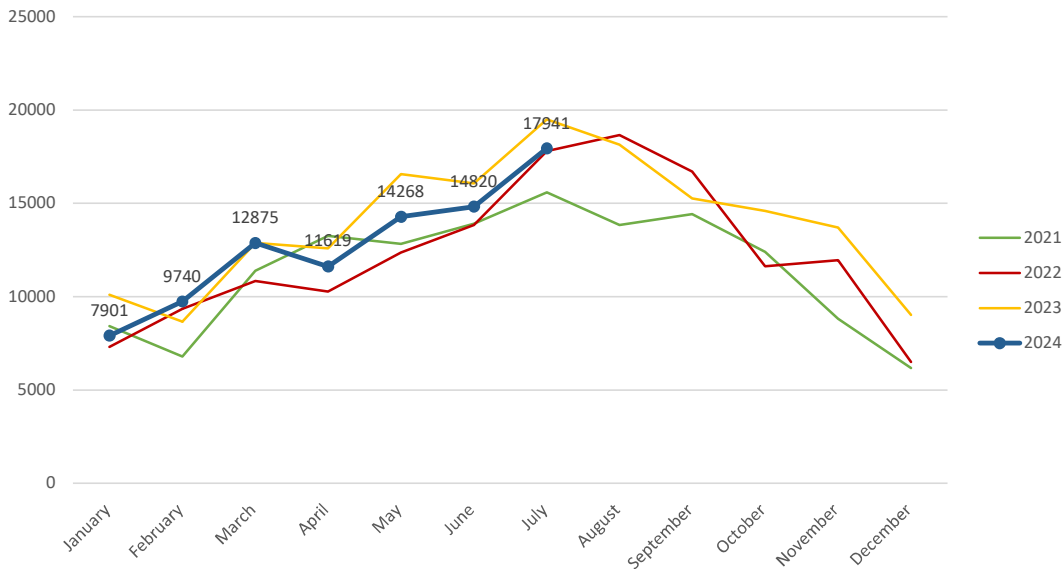
Aircraft Operations Summary:

During July 2024, the Paine Field Air Traffic Control Tower reported 17941 flight operations. This is a 7.9% decrease in operations compared to July 2023 which had 19499 operations. The four-year average for July is 17709 flight operations. Total operations for July were 1.3% above the 4-year average.

Monthly Operations VS Noise Comments



Monthly Operations Four Year Data



Paine Field Website: www.paineairport.com
 Noise Abatement Procedures: www.paineairport.com/159/Noise-Abatement-Procedures
 Paine Field Noise FAQ: www.paineairport.com/215/Noise-FAQs
 To submit a noise comment online: www.planenoise.com/kpae
 To submit a noise comment by phone: (425) 284-0500