

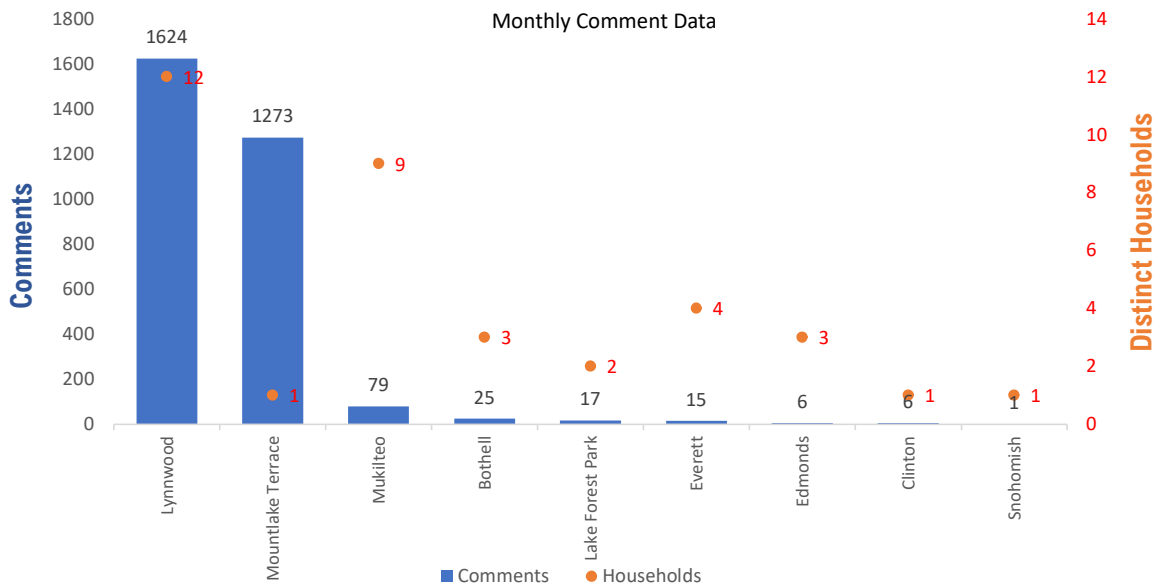


## Monthly Totals & Trends

**3,046**  
Noise Comments
**36**  
Distinct Households
**191**  
Distinct Households YTD
**2,948 (96.8%)**  
Comments by top 10 households

Paine Field – Snohomish County Airport uses a variety of methods to identify, track, and reduce the impact of aircraft noise on the surrounding communities. Noise comments are managed using a third-party application that correlates each complaint with a specific flight to help airport staff identify the primary causes of noise. The airport does not have the authority to restrict aircraft operations or change aircraft flight paths. Instead, the airport relies on pilots following the published voluntary noise abatement procedures. Several factors may require a pilot to deviate from these procedures including air traffic control instruction or safety considerations. Paine Field – Snohomish County Airport is owned and operated by Snohomish County in compliance with federal aviation regulations. Because the airport operates under the guidance of federal regulations, its facilities must remain open to users of the national airspace system 24 hours a day, 365 days a year.

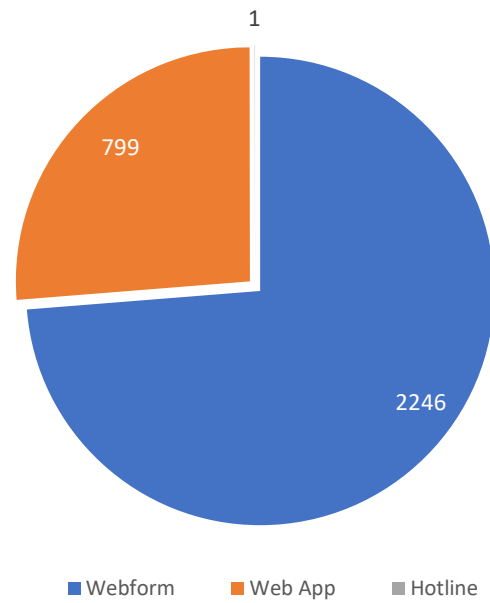
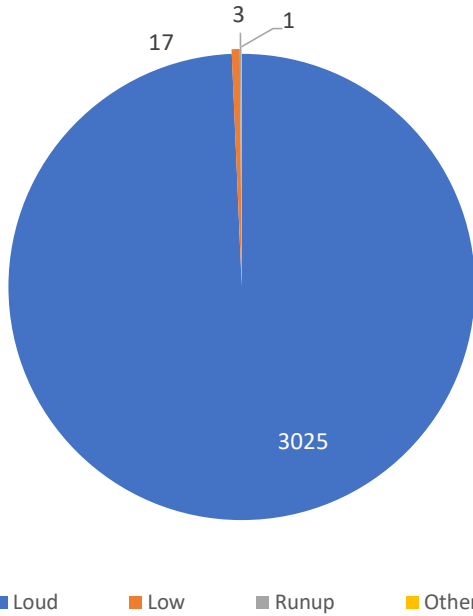
### Monthly Totals & Trends: By City



CITY	COMMENTS	DISTINCT HOUSEHOLDS	AVG COMMENTS/ HOUSEHOLD
Mountlake Terrace	1,273	1	1,273.0
Lake Forest Park	17	2	8.5
Edmonds	6	3	2.0
Lynnwood	1,624	12	135.3
Bothell	25	3	8.3
Mukilteo	79	9	8.8
Everett	15	4	3.8
Clinton	6	1	6.0
Snohomish	1	1	1.0
<b>Totals</b>	<b>3,046</b>	<b>36</b>	<b>84.6</b>



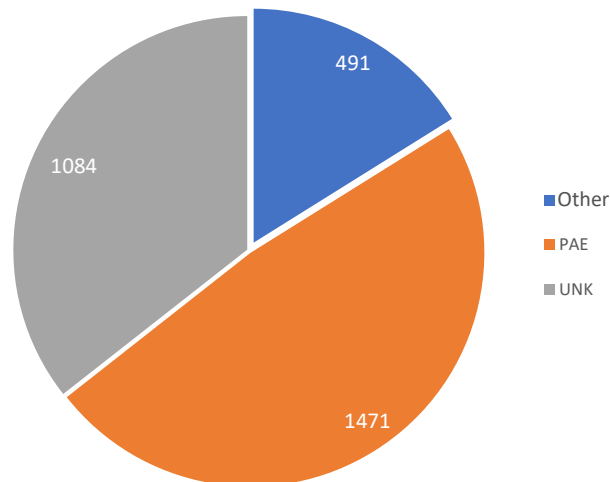
## Comment Breakdown: Types, Filing Method & Airport Correlation



COMMENT TYPE	COMMENTS
Loud	3025
Low	17
Runup	3
Other	1

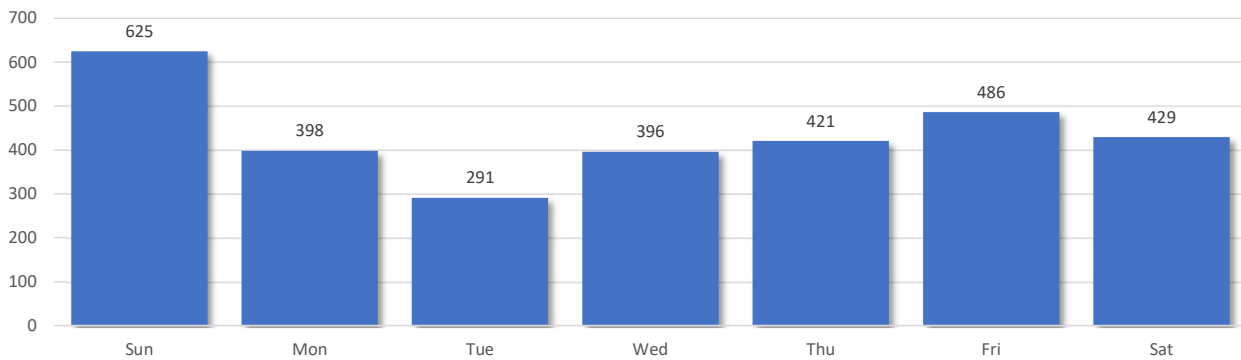
	METHOD RECEIVED	COUNT
Webform	Comment submitted via Paine Field website	2246
Web App	Third party web application	799
Hotline	Voicemail message via phone system	1

### Airport Correlations

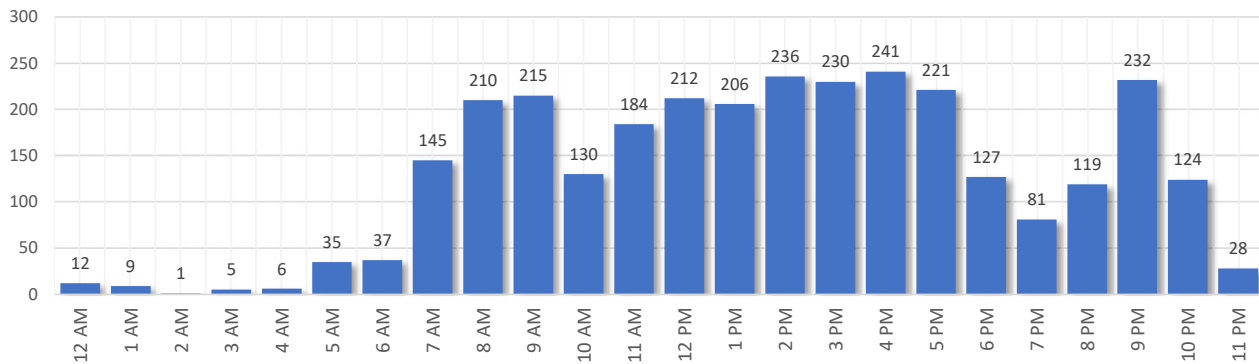


## Comment Breakdown: Day and Time

Comments by Day of Week



Comments by Time of Day

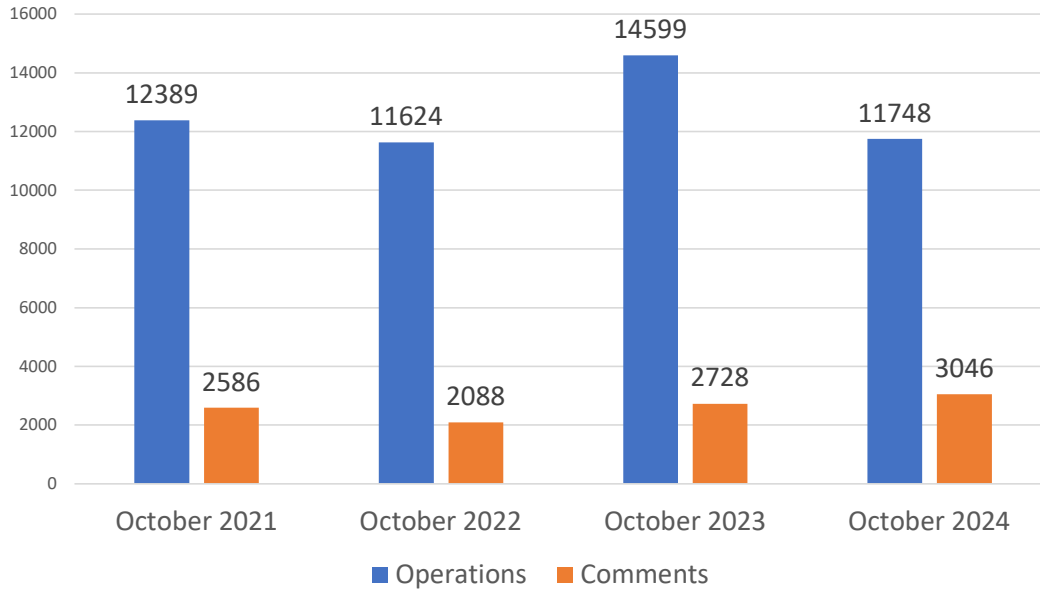




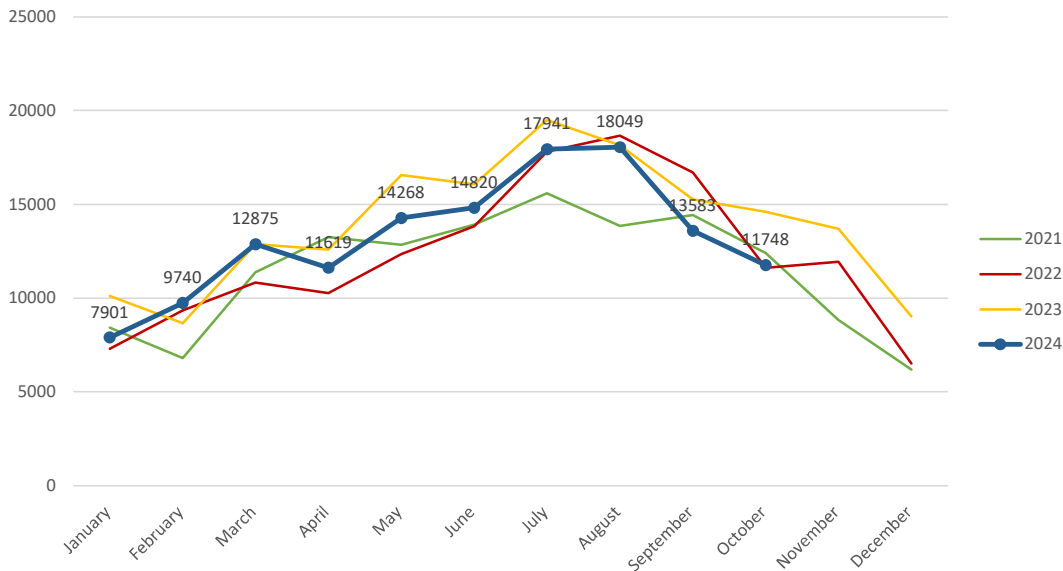
Aircraft Operations Summary:

During October 2024, the Paine Field Air Traffic Control Tower reported 11748 flight operations. This is a 19.5% decrease in operations compared to October 2023 which had 14599 operations. The four-year average for October is 12590 flight operations. Total operations for October were 6.6% below the 4-year average.

Monthly Operations VS Noise Comments



Monthly Operations Four Year Data



Paine Field Website: [www.paineairport.com](http://www.paineairport.com)  
 Noise Abatement Procedures: [www.paineairport.com/159/Noise-Abatement-Procedures](http://www.paineairport.com/159/Noise-Abatement-Procedures)  
 Paine Field Noise FAQ: [www.paineairport.com/215/Noise-FAQs](http://www.paineairport.com/215/Noise-FAQs)  
 To submit a noise comment online: [www.planenoise.com/kpae](http://www.planenoise.com/kpae)  
 To submit a noise comment by phone: (425) 284-0500