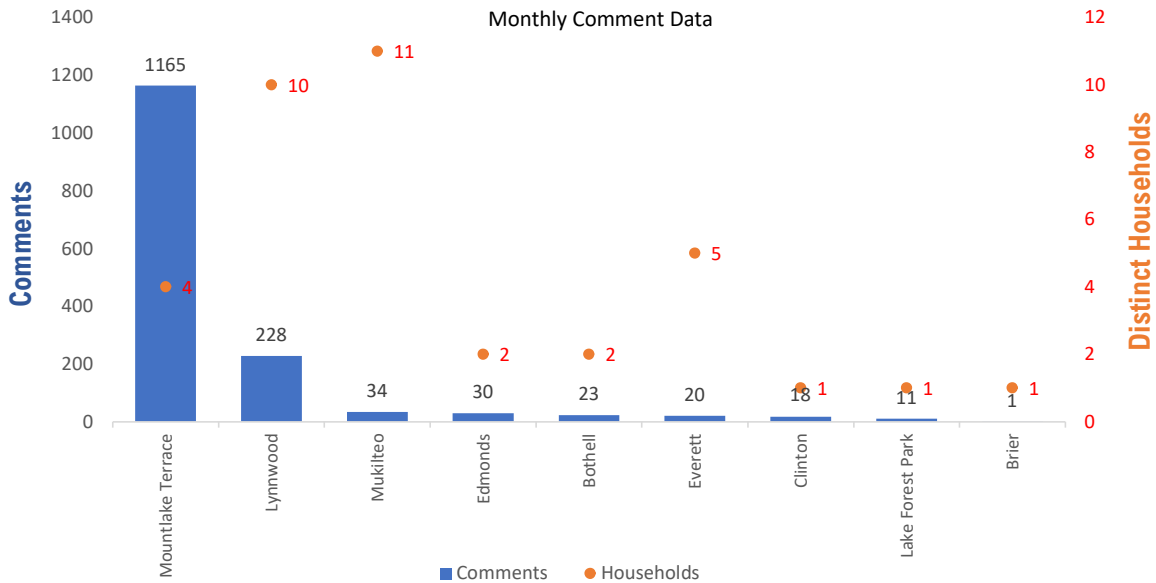


## Monthly Totals & Trends

**1,530**  
Noise Comments
**37**  
Distinct Households
**52**  
Distinct Households YTD
**1,470 (96.1%)**  
Comments by top 10 households

Paine Field – Snohomish County Airport uses a variety of methods to identify, track, and reduce the impact of aircraft noise on the surrounding communities. Noise comments are managed using a third-party application that correlates each complaint with a specific flight to help airport staff identify the primary causes of noise. The airport does not have the authority to restrict aircraft operations or change aircraft flight paths. Instead, the airport relies on pilots following the published voluntary noise abatement procedures. Several factors may require a pilot to deviate from these procedures including air traffic control instruction or safety considerations. Paine Field – Snohomish County Airport is owned and operated by Snohomish County in compliance with federal aviation regulations. Because the airport operates under the guidance of federal regulations, its facilities must remain open to users of the national airspace system 24 hours a day, 365 days a year.

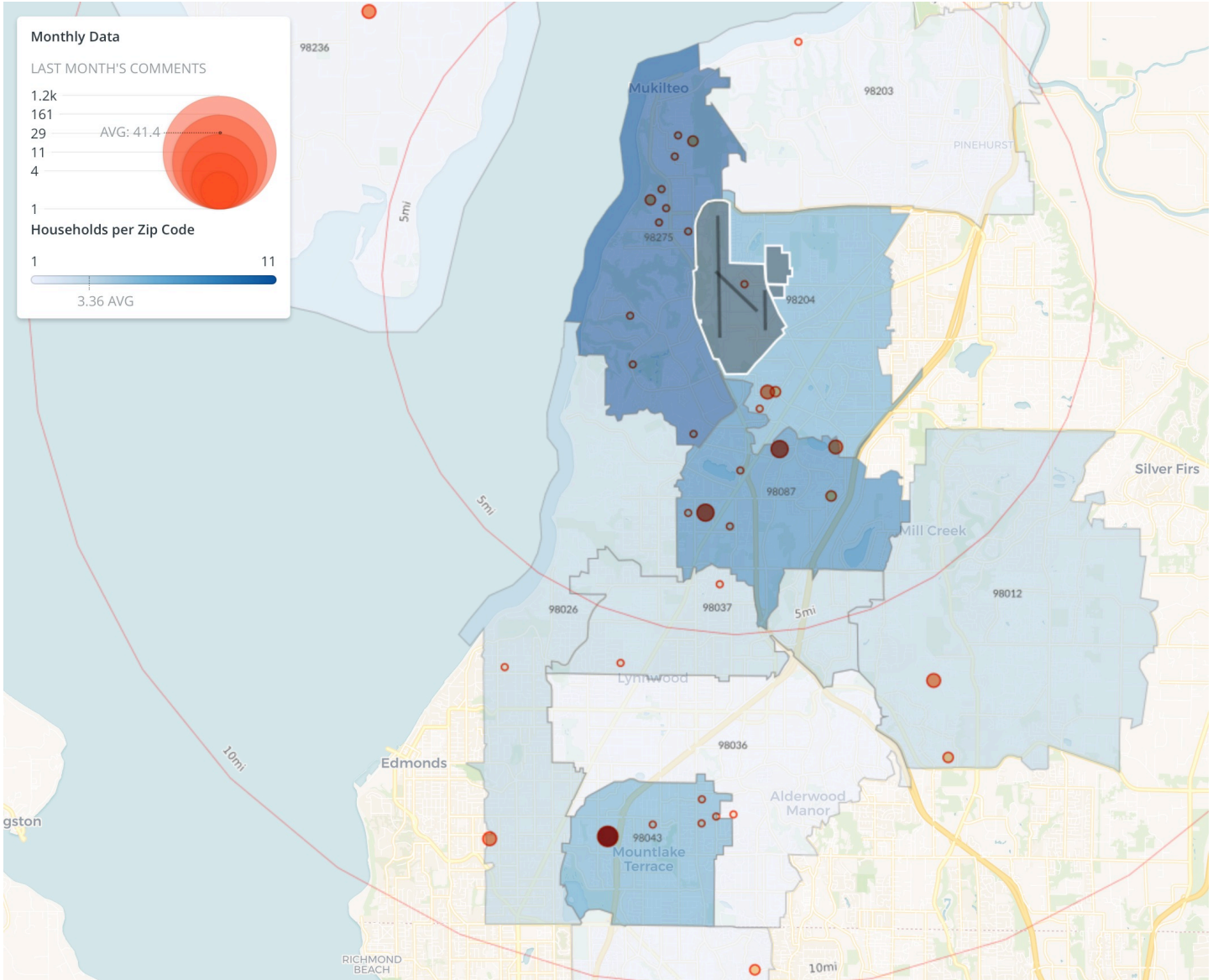
### Monthly Totals & Trends: By City



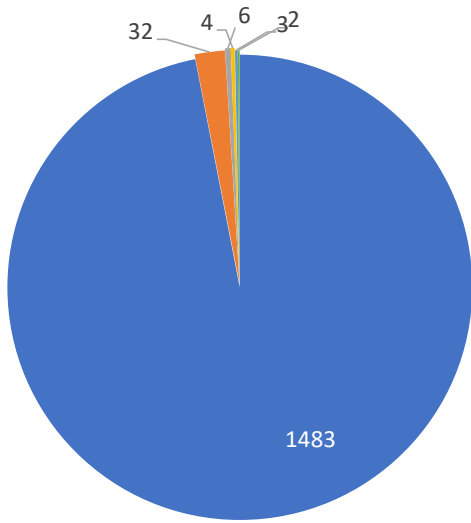
CITY	COMMENTS	DISTINCT HOUSEHOLDS	AVG COMMENTS/ HOUSEHOLD
Mountlake Terrace	1,165	4	291.3
Lake Forest Park	11	1	11.0
Edmonds	30	2	15.0
Brier	1	1	1.0
Lynnwood	228	10	22.8
Bothell	23	2	11.5
Mukilteo	34	11	3.1
Everett	20	5	4.0
Clinton	18	1	18.0
<b>Totals</b>	<b>1,530</b>	<b>37</b>	<b>41.4</b>

## Noise Comment Map: By Zip Code

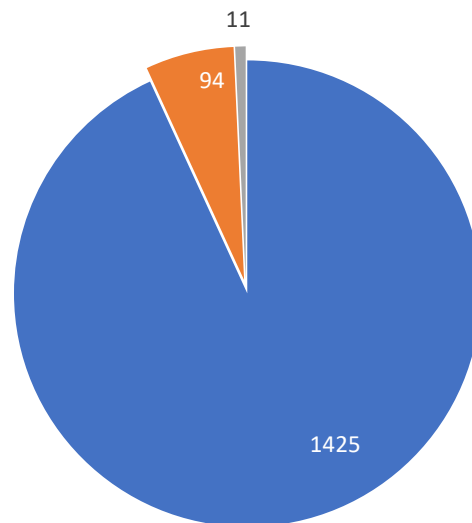
NOTES: Noise comments from households submitted without valid address information are not depicted on the map.



## Comment Breakdown: Types, Filing Method & Airport Correlation



■ Loud ■ Low ■ Runup ■ Unspecified ■ Other ■ Off Course

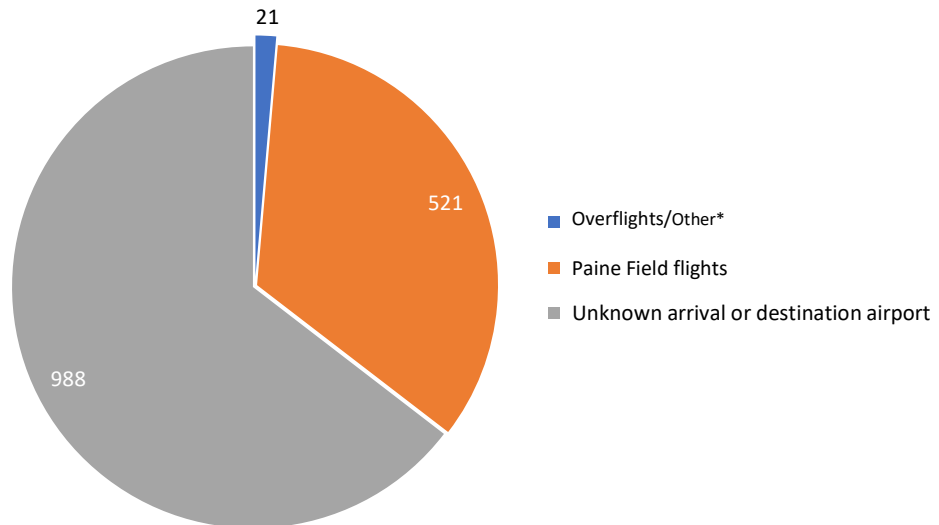


■ Webform ■ Web App ■ Hotline

COMMENT TYPE	COMMENTS
Loud	1483
Low	32
Runup	6
Unspecified	4
Other	3
Off Course	2

	METHOD RECEIVED	COUNT
Webform	Comment submitted via Paine Field website	1425
Web App	Third party web application	94
Hotline	Voicemail message via phone system	11

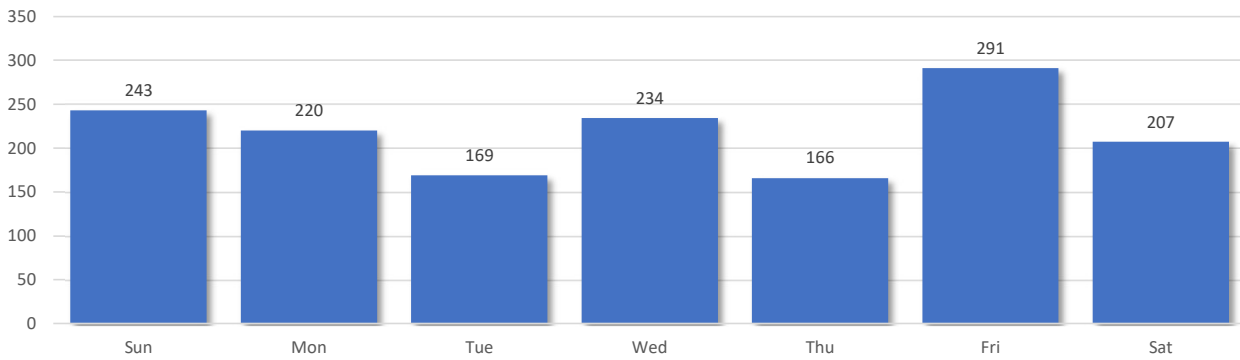
Comments by Airport/Location



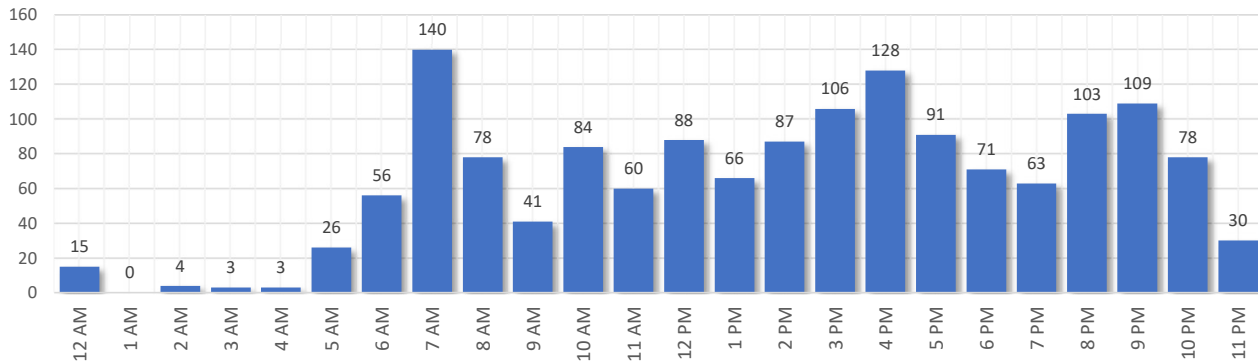
\*Overflight/other flights are not directly attributed to Paine Field. They can be flights from SeaTac, Boeing Field, Arlington, Harvey Field, Whidbey Island, etc.

## Comment Breakdown: Day and Time

Comments by Day of Week



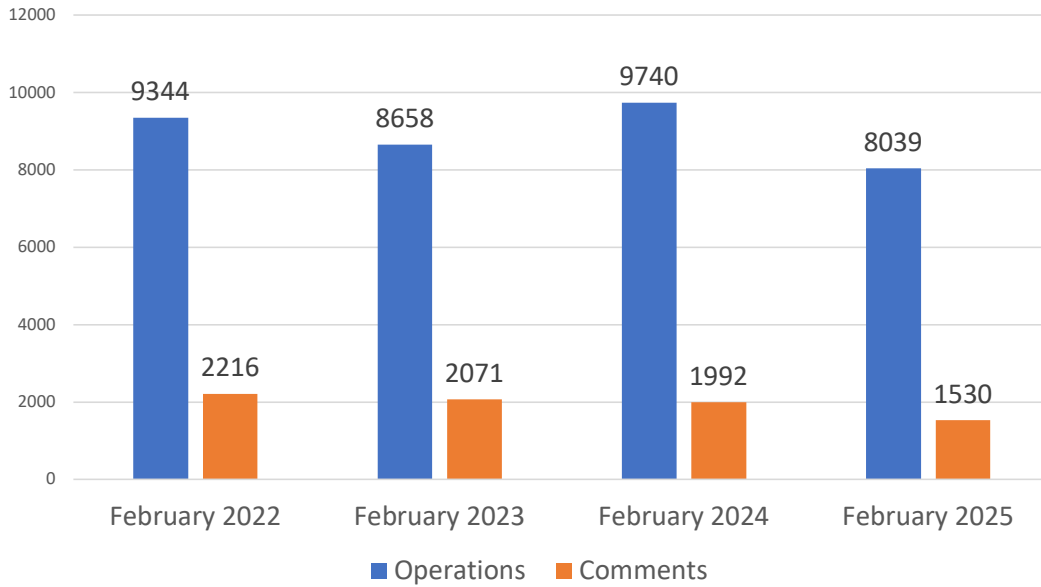
Comments by Time of Day



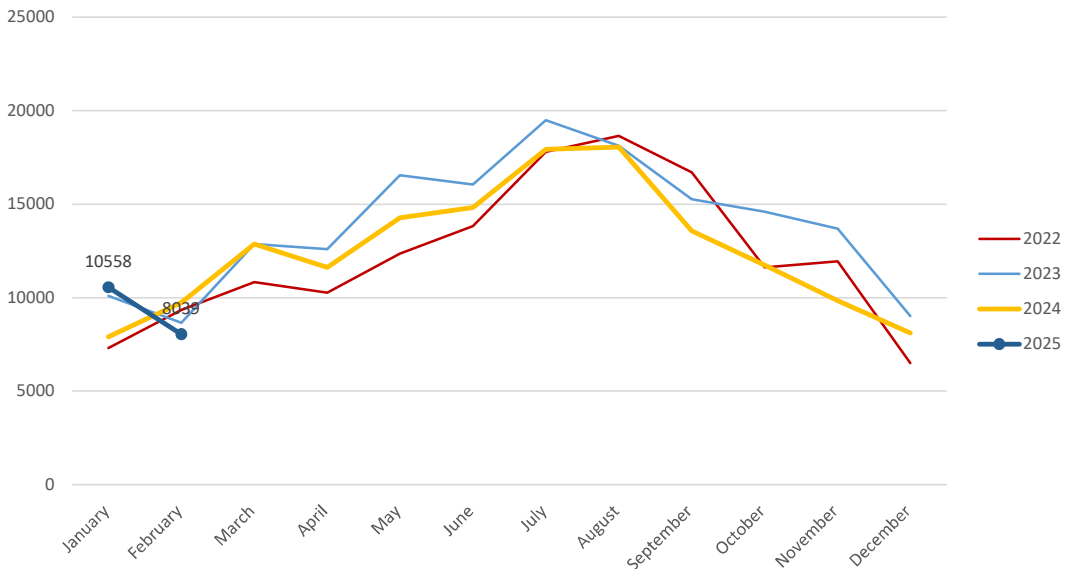
Aircraft Operations Summary:

During February 2025, the Paine Field Air Traffic Control Tower reported 8039 flight operations. This is a 17.4% decrease in operations compared to February 2024 which had 9740 operations. The four-year average for February is 8945 flight operations. Total operations for February were 10.1% below the 4-year average.

Monthly Operations VS Noise Comments



Monthly Operations Four Year Data



Paine Field Website: [www.paineairport.com](http://www.paineairport.com)  
 Noise Abatement Procedures: [www.paineairport.com/159/Noise-Abatement-Procedures](http://www.paineairport.com/159/Noise-Abatement-Procedures)  
 Paine Field Noise FAQ: [www.paineairport.com/215/Noise-FAQs](http://www.paineairport.com/215/Noise-FAQs)  
 To submit a noise comment online: [www.planenoise.com/kpae](http://www.planenoise.com/kpae)  
 To submit a noise comment by phone: (425) 284-0500