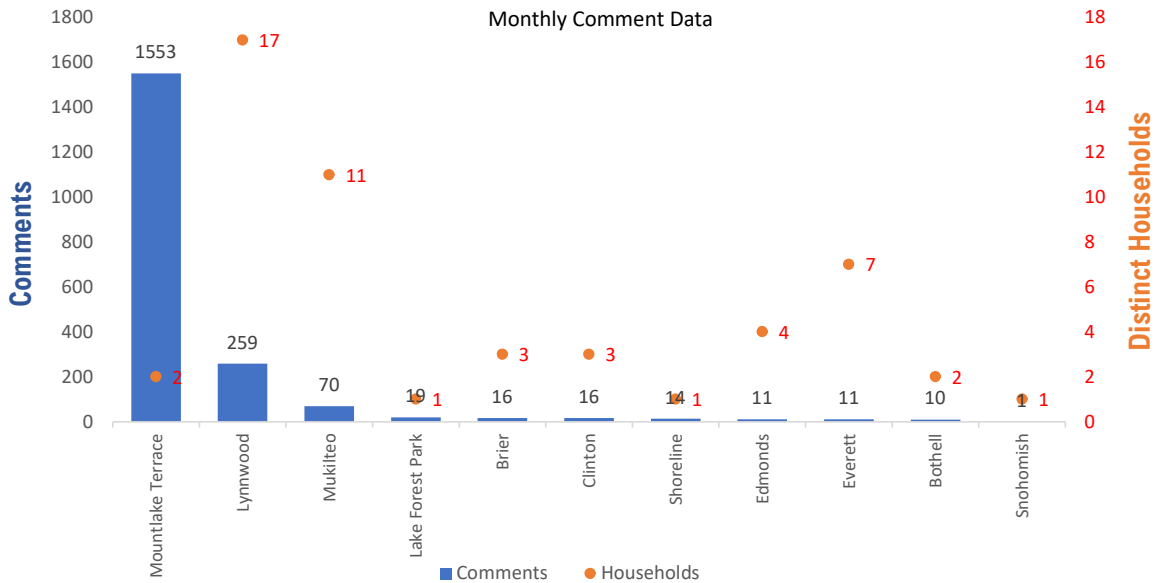


Monthly Totals & Trends

1,982
Noise Comments
54
Distinct Households
178
Distinct Households YTD
1,867 (94.2%)
Comments by top 10 households

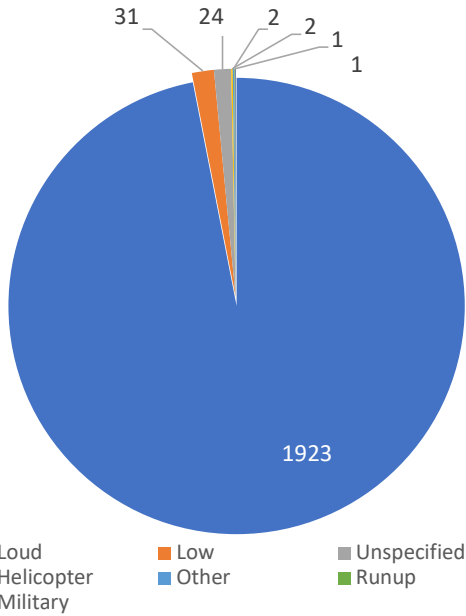
Paine Field – Snohomish County Airport uses a variety of methods to identify, track, and reduce the impact of aircraft noise on the surrounding communities. Noise comments are managed using a third-party application that correlates each complaint with a specific flight to help airport staff identify the primary causes of noise. The airport does not have the authority to restrict aircraft operations or change aircraft flight paths. Instead, the airport relies on pilots following the published voluntary noise abatement procedures. Several factors may require a pilot to deviate from these procedures including air traffic control instruction or safety considerations. Paine Field – Snohomish County Airport is owned and operated by Snohomish County in compliance with federal aviation regulations. Because the airport operates under the guidance of federal regulations, its facilities must remain open to users of the national airspace system 24 hours a day, 365 days a year.

Monthly Totals & Trends: By City

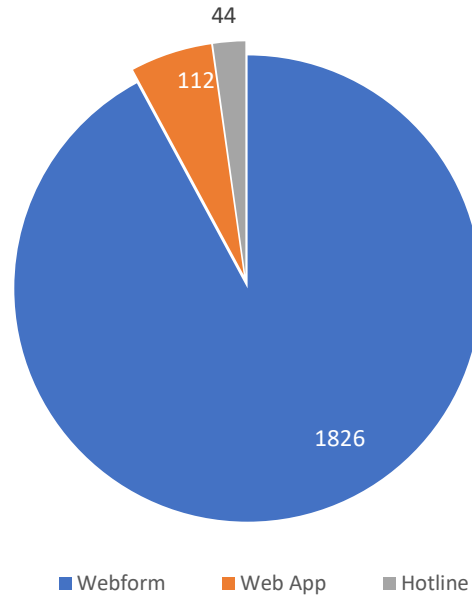


CITY	COMMENTS	DISTINCT HOUSEHOLDS	AVG COMMENTS/ HOUSEHOLD
Mountlake Terrace	1,553	2	776.5
Lynnwood	259	17	15.2
Mukilteo	70	11	6.4
Lake Forest Park	19	1	19.0
Clinton	16	3	5.3
Brier	16	3	5.3
Shoreline	14	1	14.0
Everett	11	7	1.6
Edmonds	11	4	2.8
Bothell	10	2	5.0
Snohomish County	2	2	1.0
Snohomish	1	1	1.0
Totals	1,982	54	36.7

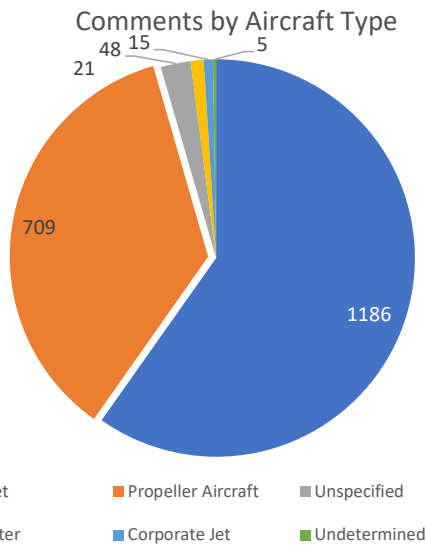
Comment Breakdown: Types, Filing Method & Airport Correlation



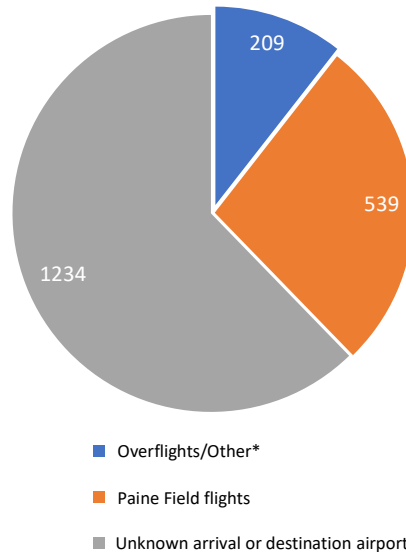
COMMENT TYPE	COMMENTS
Loud	1923
Low	31
Unspecified	24
Helicopter	2
Other	2
Runup	1
Military	1



	METHOD RECEIVED	COUNT
Webform	Comment submitted via Paine Field website	1826
Web App	Third party web application	112
Hotline	Voicemail message via phone system	44



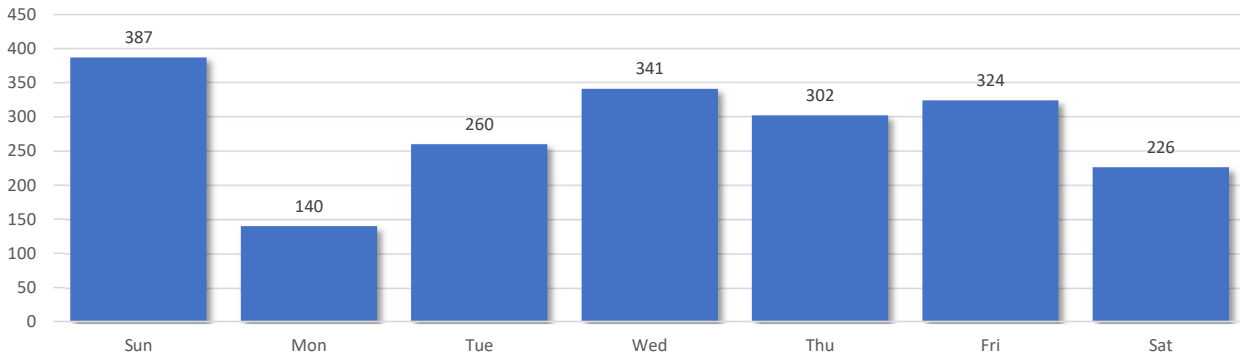
Comments by Airport/Location



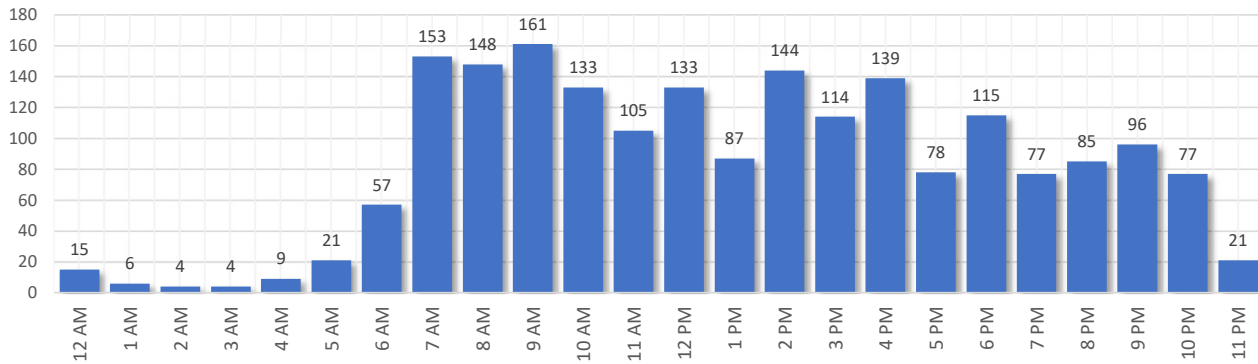
*Overflight/other flights are not directly attributed to Paine Field. They can be flights from SeaTac, Boeing Field, Arlington, Harvey Field, Whidbey Island, etc.

Comment Breakdown: Day and Time

Comments by Day of Week



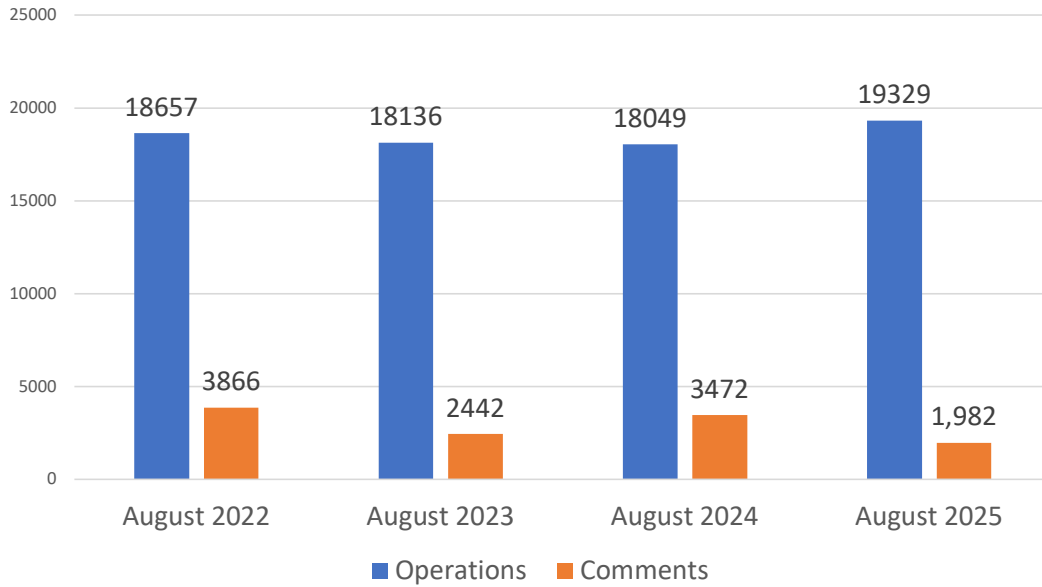
Comments by Time of Day



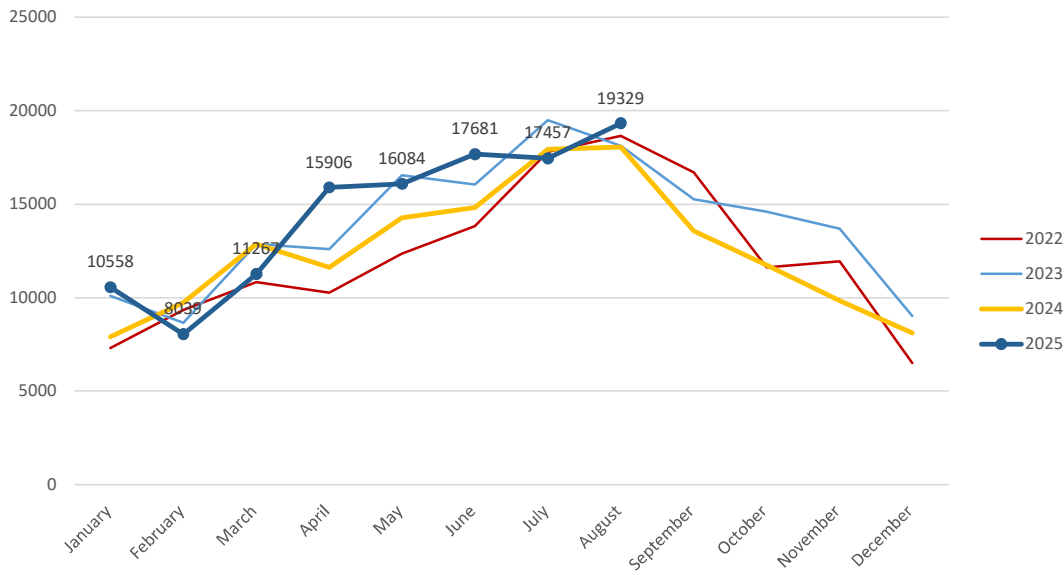
Aircraft Operations Summary:

During August 2025, the Paine Field Air Traffic Control Tower reported 19329 flight operations. This is a 7% increase in operations compared to August 2024 which had 18049 operations. The four-year average for August is 18542 flight operations. Total operations for August were 4.2% above the 4-year average.

Monthly Operations VS Noise Comments



Monthly Operations Four Year Data



Paine Field Website: www.paineairport.com
 Noise Abatement Procedures: www.paineairport.com/159/Noise-Abatement-Procedures
 Paine Field Noise FAQ: www.paineairport.com/215/Noise-FAQs
 To submit a noise comment online: www.planenoise.com/kpae
 To submit a noise comment by phone: (425) 284-0500