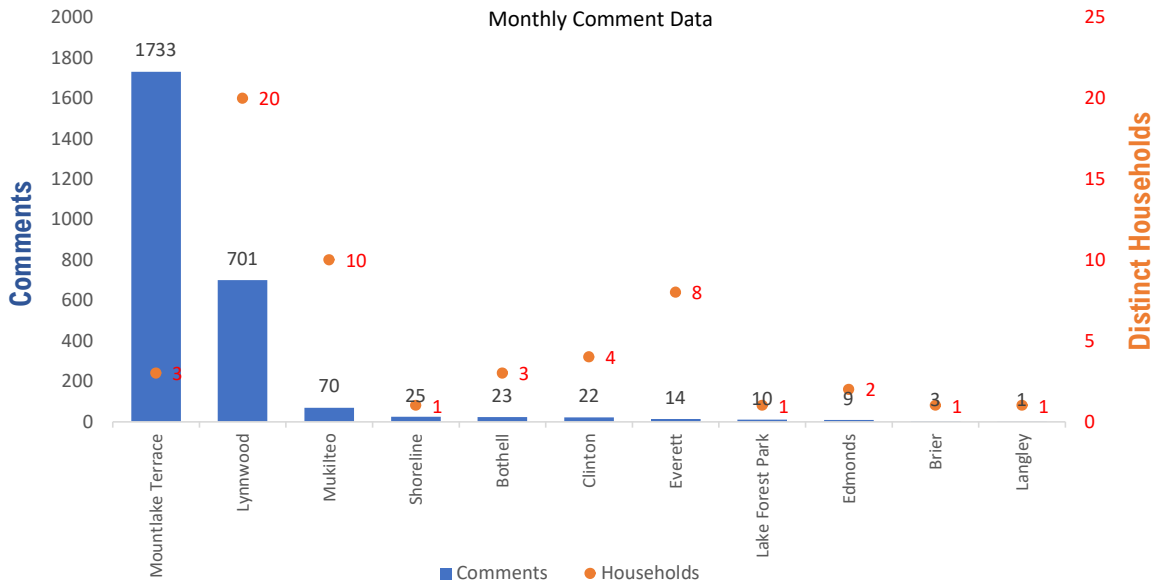


Monthly Totals & Trends

2,617
Noise Comments
56
Distinct Households
191
Distinct Households YTD
2,500 (95.5%)
Comments by top 10 households

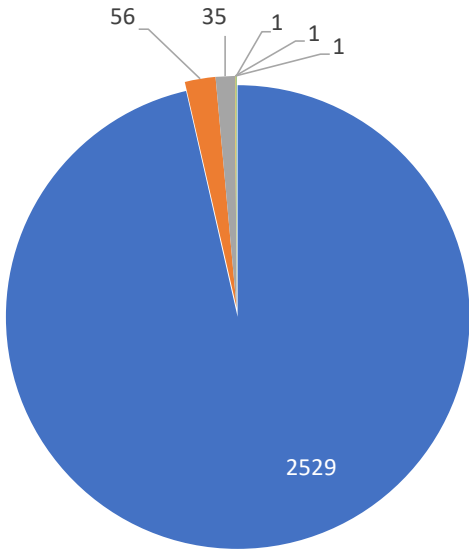
Paine Field – Snohomish County Airport uses a variety of methods to identify, track, and reduce the impact of aircraft noise on the surrounding communities. Noise comments are managed using a third-party application that correlates each complaint with a specific flight to help airport staff identify the primary causes of noise. The airport does not have the authority to restrict aircraft operations or change aircraft flight paths. Instead, the airport relies on pilots following the published voluntary noise abatement procedures. Several factors may require a pilot to deviate from these procedures including air traffic control instruction or safety considerations. Paine Field – Snohomish County Airport is owned and operated by Snohomish County in compliance with federal aviation regulations. Because the airport operates under the guidance of federal regulations, its facilities must remain open to users of the national airspace system 24 hours a day, 365 days a year.

Monthly Totals & Trends: By City



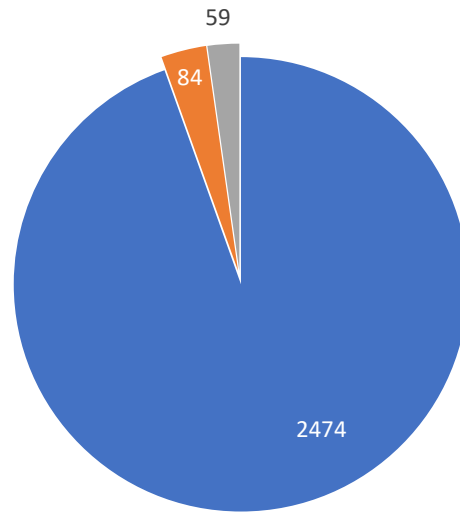
CITY	COMMENTS	DISTINCT HOUSEHOLDS	AVG COMMENTS/HOUSEHOLD
Mountlake Terrace	1,733	3	577.7
Lynnwood	701	20	35.1
Mukilteo	70	10	7.0
Shoreline	25	1	25.0
Bothell	23	3	7.7
Clinton	22	4	5.5
Everett	14	8	1.8
Lake Forest Park	10	1	10.0
Edmonds	9	2	4.5
Snohomish County	6	2	3.0
Brier	3	1	3.0
Langley	1	1	1.0
Totals	2,617	56	46.7

Comment Breakdown: Types, Filing Method & Airport Correlation



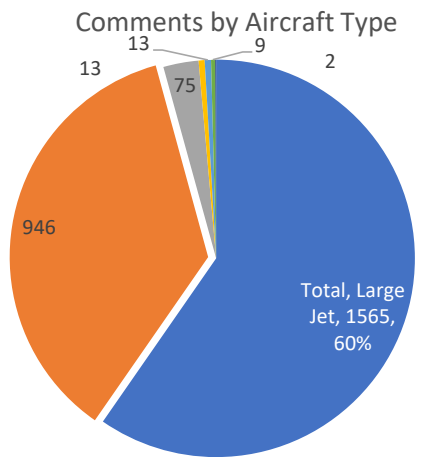
- Loud
- Low
- Unspecified
- Helicopter
- Runup
- Other

COMMENT TYPE	COMMENTS
Loud	2529
Low	56
Unspecified	35
Helicopter	1
Runup	1
Other	1



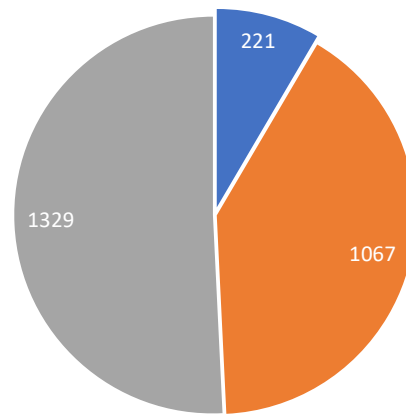
- Webform
- Web App
- Hotline

	METHOD RECEIVED	COUNT
Webform	Comment submitted via Paine Field website	2474
Web App	Third party web application	84
Hotline	Voicemail message via phone system	59



- Large Jet
- Propeller Aircraft
- Unspecified
- Helicopter
- Corporate Jet
- Undetermined
- Military

Comments by Airport/Location

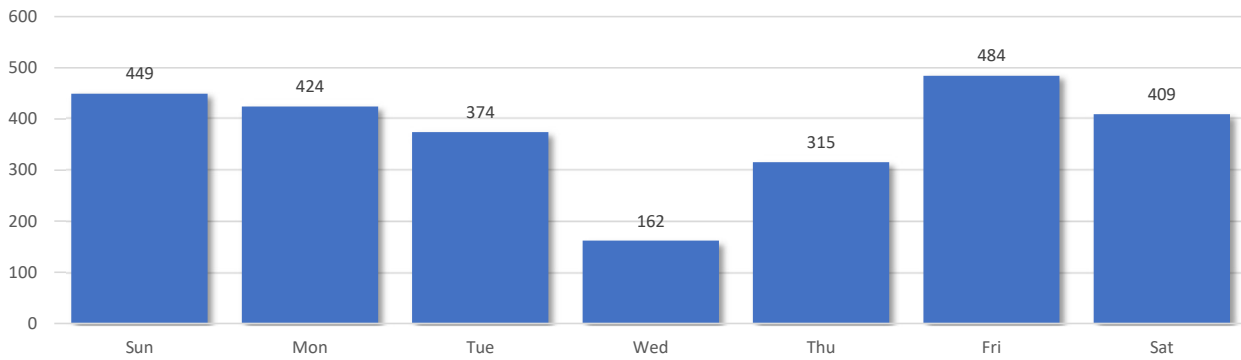


- Overflights/Other*
- Paine Field flights
- Unknown arrival or destination airport

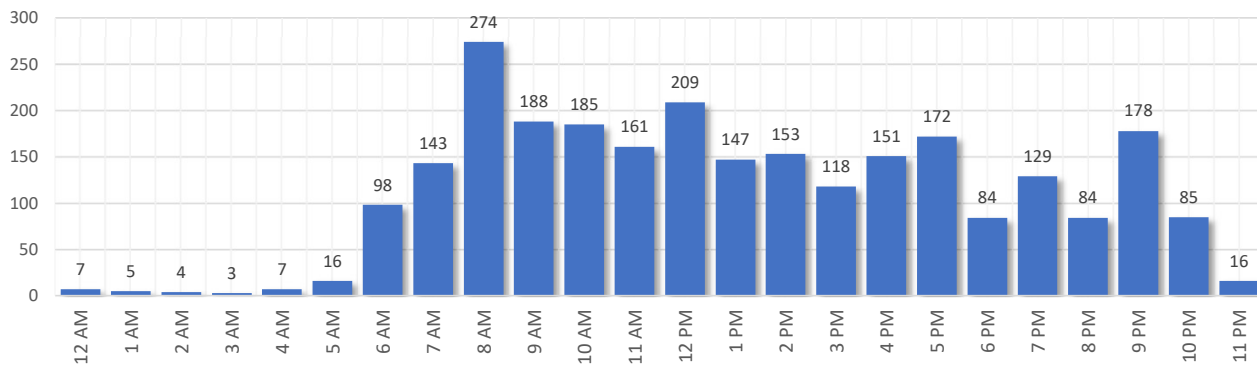
*Overflight/other flights are not directly attributed to Paine Field. They can be flights from SeaTac, Boeing Field, Arlington, Harvey Field, Whidbey Island, etc.

Comment Breakdown: Day and Time

Comments by Day of Week



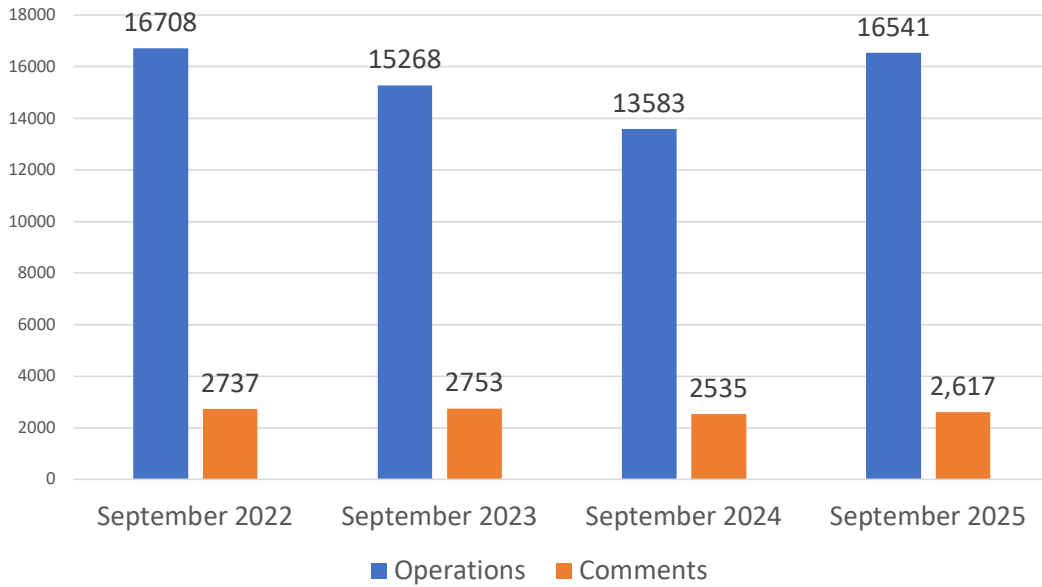
Comments by Time of Day



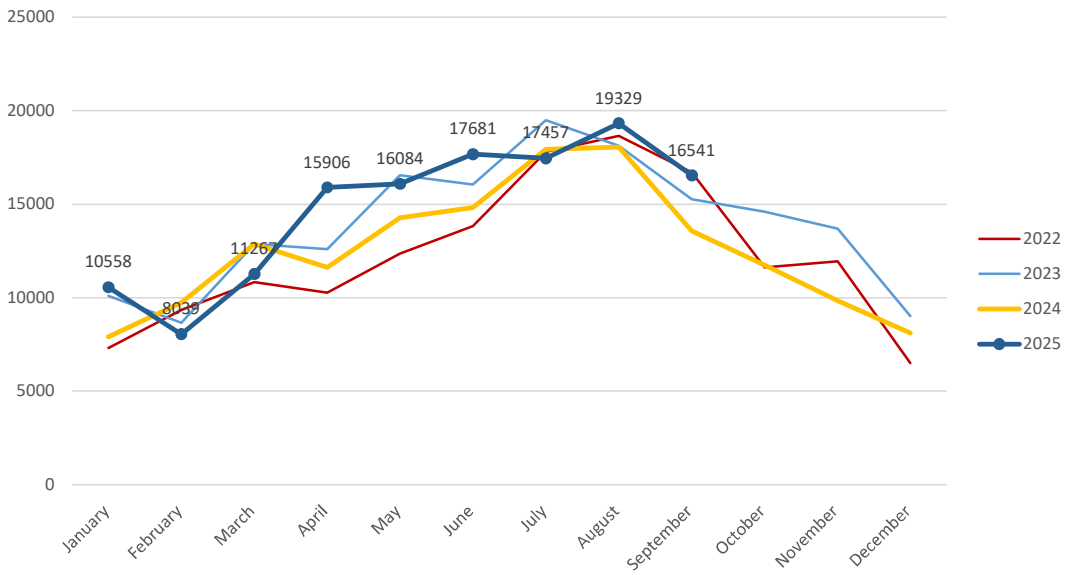
Aircraft Operations Summary:

During September 2025, the Paine Field Air Traffic Control Tower reported 16541 flight operations. This is a 21.7% increase in operations compared to September 2024 which had 13583 operations. The four-year average for September is 15525 flight operations. Total operations for September were 6.5% above the 4-year average.

Monthly Operations VS Noise Comments



Monthly Operations Four Year Data



Paine Field Website: www.paineairport.com
 Noise Abatement Procedures: www.paineairport.com/159/Noise-Abatement-Procedures
 Paine Field Noise FAQ: www.paineairport.com/215/Noise-FAQs
 To submit a noise comment online: www.planenoise.com/kpae
 To submit a noise comment by phone: (425) 284-0500