

Monthly Noise Summary

PAINÉ FIELD AIRPORT • 3220 100TH ST SW • EVERETT, WA 98204
NOISE HOTLINE: 425-353-2110 x1

APRIL 2008

INSIDE THIS ISSUE:

Article	Page
Monthly Summary Recording Noise Complaints	1
Monthly Flight Operations Noise Complaints Filed by Noise Quadrant	2
Noise complaints	3
Monthly Operations Levels 2005-2008	4

SUMMARY

During April 2008, the Airport Office received 65 noise related calls from individuals in the surrounding communities. All 65 of those calls were complaints regarding flight operations. 35 of the complaints, or 54% were filed by 3 individuals.

Noise calls are received via telephone hotline (425-353-2110 x1) or through the airport web page noise complaint form (www.paineairport.com/noise/noiseform.html), upon receipt they are investigated. The FAA retains radar data for 3 days before providing it to the airport's AIRSCENE noise monitoring system. Airport staff uses the AIRSCENE data and other sources to help identify which operations generated the complaint. The operator is notified of the complaint and made aware of the airport's noise abatement program. Callers who specifically request to be contacted are called back and all who file complaints are provided a copy of the monthly noise summary which identifies the disposition of the complaint. The monthly noise

summary is mailed in the third week of the following month.

Caller Identification Codes are found on page 3 to identify the individuals who made each call. Callers will find their ID number on the mailing label. Some of the aircraft events listed on page 3 are presumed to have originated and/or completed their flight at an airport other than Paine Field.

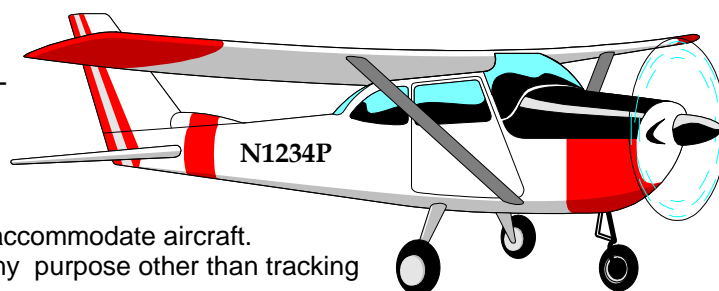
After the individual complaint listings you will find a graphic representing the 16 noise sub-quadrants located around Paine Field. The graphic also depicts where Paine Field's three noise monitors are located.

In addition to this monthly noise report, you will find a copy of Snohomish County Airport's monthly tenant newsletter, *Paine Field Happenings*. The newsletter is sent to all airport tenants and users and is also found on our website at: www.paineairport.com/happenings

RECORDING NOISE COMPLAINTS

Your noise calls are important to us. If there are flight operations taking place which are not ordinary such as very low altitude operations, or repetitive overflights by jets, please do call in. However, if you see an ordinary aircraft taking off or landing, which seem to be abiding by reasonable standards, please be aware that the airport is here to accommodate aircraft. The airport is not collecting or tallying data to be used for any purpose other than tracking your concern.

In filing your noise complaints, please state your name, address, phone number, and the information pertaining to your concern. For those who have filed a noise complaint before, it is okay to just state your full name. To help identify small propeller aircraft, please give a description of the aircraft: color, wing placement, N Number, # of engines. The more complete your information, the better the chance of it being helpful in identifying the aircraft.



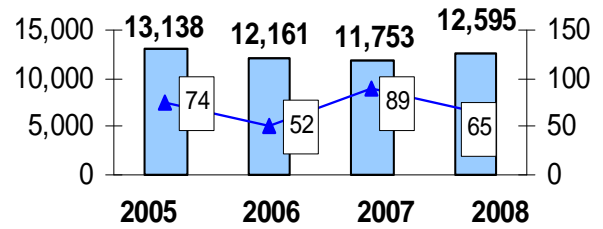
APRIL 2008 MONTHLY FLIGHT OPERATIONS

During April 2008, the FAA Paine Field Air Traffic Control Tower recorded 12,595 flight operations. This is a 7 % increase in operations from April 2007 which had 11,753 operations.

The four-year average number of flight operations for the month of April is 12,411. Total operations for April 2008 are 1% above the four-year average.

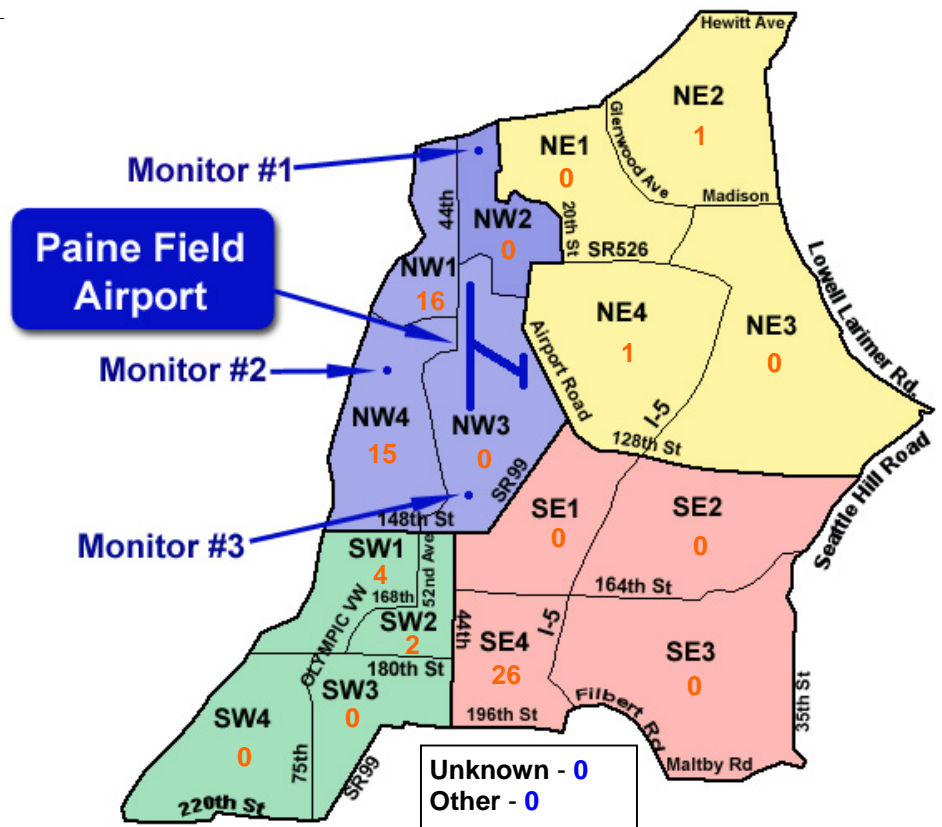
The graph shows operations compared to number of noise complaints for the years 2005, 2006, 2007 and 2008 during the month of April.

April Operations vs. Noise Complaints

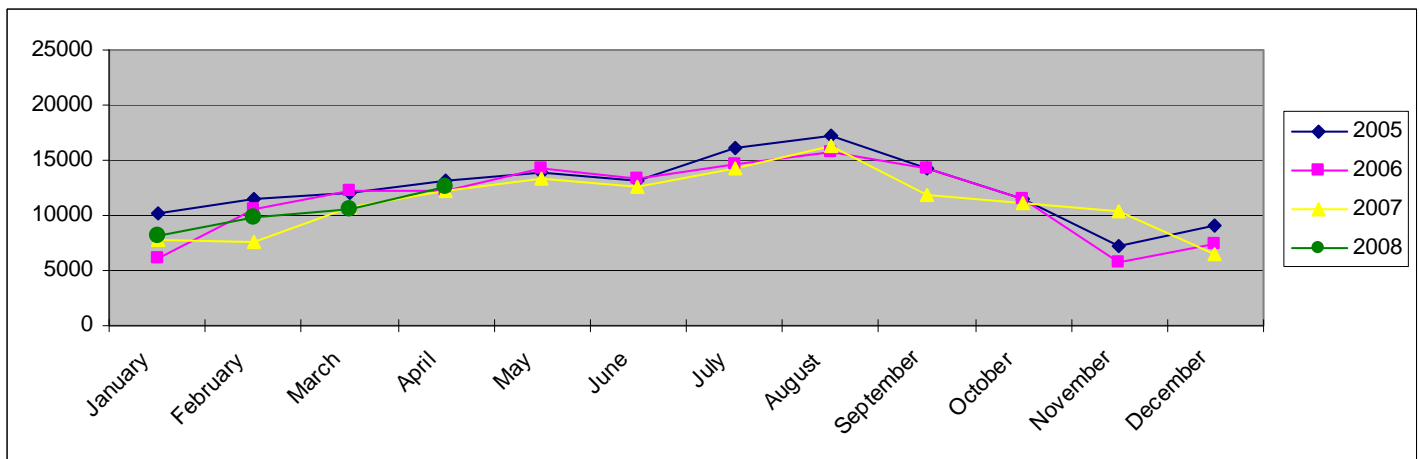


NOISE QUADRANTS

The graphic on the right depicts Paine Field's 16 noise quadrants and the locations of the three noise monitors. The blue numbers within each quadrant represent how many calls were made from that quadrant in the month of April. "Unknown" represents complaints where the caller's quadrant was not identified. "Other" represents complaints from outside the four quadrants.



Monthly Operations Levels 2005—2008



APRIL 2008 NOISE COMPLAINTS

You can find your Caller Identification Number on your mailing label.

ID	Zone	Date	Time	N#	Aircraft	Activity	Traced To	Complaint
S930024	NW1	4/2/2008	03:30	CCY382	FalconJet	DEP 16R	Cherry Air	Very Loud
F930013	SE4	4/2/2008	11:09	EIA5161	747-LCF	ARR 16R	Evergreen Airlines/Boeing	Noisy
C050008	NE4	4/3/2008	12:00	n/a	Helicopter	repetitive	could not be traced	change flight path
F930013	SE4	4/4/2008	12:55	EIA 5106	747-LCF	DEP 16R	Evergreen Airlines/ Boein	Noisy
F930013	SE4	4/4/2008	12:58	BOE579	747-400	DEP 16R	Boeing	Noisy, Low
D060001	NW1	4/5/2008	21:35	n/a	747	Trim	Boeing	Loud
E070003	SE4	4/6/2008	11:35	HAL9021	767-300	DEP 16R	Hawaiian/ATS	General Complaint
W980009	NW4	4/6/2008	14:15	BOE202	737	T & G 16R	Boeing	Noisy
B050019	NW1	4/6/2008	22:37	N109AS	Beech Baron	ARR 16R	Private Owner	Should not be traffic at this hour
M050011	SW2							
W980009	NW4	4/7/2008	12:25	BOE881	737-800	Low APP 16R	Boeing	Noisy
F930013	SE4	4/8/2008	08:51	n/a	n/a	n/a	Could no tbe traced	Noise
W980009	NW4	4/8/2008	09:12	BOE579	747-400	DEP 16R	Boeing	Noisy
F930013	SE4	4/8/2008	14:20	SXS023	737-800	DEP 16R	Sun Express	Loud
E070003	SE4	4/9/2008	09:13	N9872C	KingAlr	DEP 16R	Private Owner	General Complaint
E070003	SE4	4/9/2008	14:15	BOE705	777-300	DEP 34L	Boeing	General Complaint
S030002	NW1	4/10/2008	01:30	n/a	n/a	n/a	could not be traced	Loud
B080003	NW1	4/11/2008	01:52	DAL9935	767-300	DEP 34L	Delta/ATS	Large plane over House
E070003	SE4	4/11/2008	09:15	EIA5104	747-LCF	DEP 16R	Evergreen Airlines/Boeing	General Complaint
F930013	SE4							
D060001	NW1	4/11/2008	22:51	N91K	Navion	ARR 34L	Private Owner	Loud
T060001	NW4	4/12/2008	07:40	N580AS	Convair 580	DEP 34L	Honeywell	Too early on a Saturday
W980009	NW4	4/12/2008	13:20	SIA777	777-300	DEP 16R	Singapore Airlines/Boeing	Noisy
J080002	NE2	4/12/2008	16:12	CONVAIR580	Convair	ARR 16R	Honeywell	Buzzed house
B050019	NW1	4/13/2008	22:20	EIA5161	747-LCF	ARR 16R	Evergreen Airlines/ Boeing	Loud, Late
B050019	NW1	4/15/2008	00:52	n/a	n/a	n/a	Could not be traced	Late Night
E070003	SE4	4/16/2008	13:30	BOE202	737-900	Low APP 16R	Boeing	General Complaint
H050012	NW1	4/16/2008	16:25	EIA5109	747-LCF	DEP 34L	Evergreen Airlines/Boeing	Loud, Out of Flight Path?
F930013	SE4	4/18/2008	11:43	KEN19	C-208 Amphib	Low APP 16R	Kenmore Air	Noisy
W980009	NW4	4/18/2008	17:50	n/a	n/a	n/a	could not be traced	Noisy
M050011	SW2	4/20/2008	23:40	SWA8507	737-700	DEP 16R	Southwest/ATS	Too Late
F930013	SE4	4/21/2008	10:00	EIA5106	747-LCF	DEP 16R	Evergreen Airlines/Boeing	Low, Noisy
F930013	SE4	4/21/2008	10:23	n/a	n/a	n/a	could not be traced	Noisy
E070003	SE4	4/21/2008	11:15	BOE565	747-400	DEP 16R	Boeing	General Complaint
F930013	SE4	4/21/2008	12:27	NJS114	C-9	DEP 16R	Navy/ATS	Noisy
A980002	NW1	4/22/2008	00:30	SWA8505	737-300	DEP 34L	Southwest/ATS	Low, Late
G040001	NW4	4/22/2008	01:10	DAL9935	767-300	DEP 16R	Delta/ATS	Late, Loud
F930013	SE4	4/22/2008	16:45	EIA5161	747-LCF	ARR 34L	Evergreen Airlines/Boeing	Low, Noisy
E070003	SE4							
F930013	SE4	4/23/2008	09:38	BOE021	737-900	T & G 16R	Boeing	Low
B050019	NW1	4/24/2008	00:20	DAL9935	767-300	ARR 16R	Delta/ATS	Late & Loud
W980009	NW4	4/24/2008	10:25	BOE565	777-400	DEP 16R	Boeing	Noisy
W980009	NW4	4/24/2008	12:07	BOE565	777-400	Low APP 16R	Boeing	Noisy
E070003	SE4	4/24/2008	12:52	BOE706	777-300	DEP 16R	Boeing	General Complaint
S050014	SW1	4/24/2008	16:00	N746BA	737-700	3 T&G's 34L	ATS/Boeing	Loud & Low
E070003	SE4							
W980009	NW4							
E070003	SE4							
W980009	NW4							

APRIL 2008 NOISE COMPLAINTS

ID	Zone	Date	Time	N#	Aircraft	Activity	TracedTo	Complaint
B050020	NW1	4/24/2008	17:54	ALLEN02	E-3	ARR 34L	Air Force	Loud
B050020	NW1							
H030004	NW4							
D970007	NW4							
B050020	NW1	4/24/2008	18:08	EIA5261	747-LCF	DEP 34L	Evergreen Airlines/Boeing	Loud
E070003	SE4	4/24/2008	18:15	N3734B	737-800	DEP 16R	Delta/ATS	General Complaint
B050020	NW1	4/24/2008	23:00	N65923	C-172	Stop & Go 34L	Private Owner	Loud, Low
E070003	SE4	4/25/2008	18:00	ALLEN02	E-3	T n G 16R	Air Force	General Complaint
S050014	SW1							
M040003	NW1	4/26/2008	01:35	DAL9937	767-300	DEP 16R	Delta/ATS	Loud & Late Night
W980009	NW4	4/30/2008	10:22	SWA8501	737-300	DEP 16R	Southwest/ATS	Noisy
Q920001	NW4	4/30/2008	10:45	ROOK11	EA-6B	T&G 16R	Navy	Loud
H060001	SE4							
S050014	SW1							
S050014	SW1							

Paine Field - Snohomish County Airport
 3220 100th St SW Suite A
 Everett, WA 98204

