



Monthly Totals & Trends

2,438

Noise Comments

116

Distinct Households

698

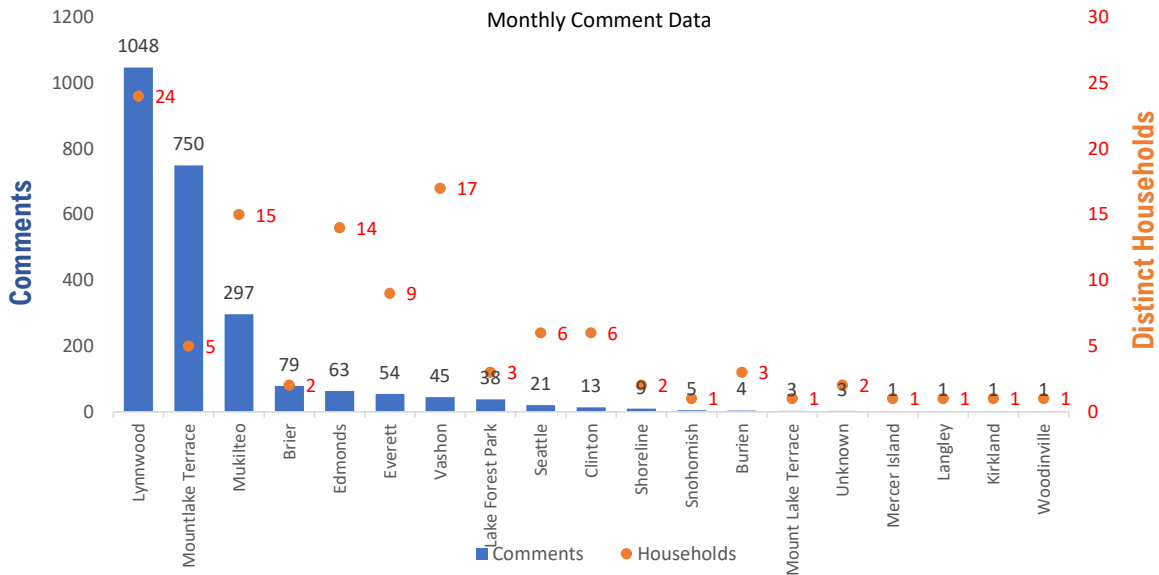
Distinct Households YTD

1,994 (81.8%)

Comments by top 10 households

Paine Field – Snohomish County Airport uses a variety of methods to identify, track, and reduce the impact of aircraft noise on the surrounding communities. Noise comments are managed using a third-party application that correlates each complaint with a specific flight to help airport staff identify the primary causes of noise. The airport does not have the authority to restrict aircraft operations or change aircraft flight paths. Instead, the airport relies on pilots following the published voluntary noise abatement procedures. Several factors may require a pilot to deviate from these procedures including air traffic control instruction or safety considerations. Paine Field – Snohomish County Airport is owned and operated by Snohomish County in compliance with federal aviation regulations. Because the airport operates under the guidance of federal regulations, its facilities must remain open to users of the national airspace system 24 hours a day, 365 days a year.

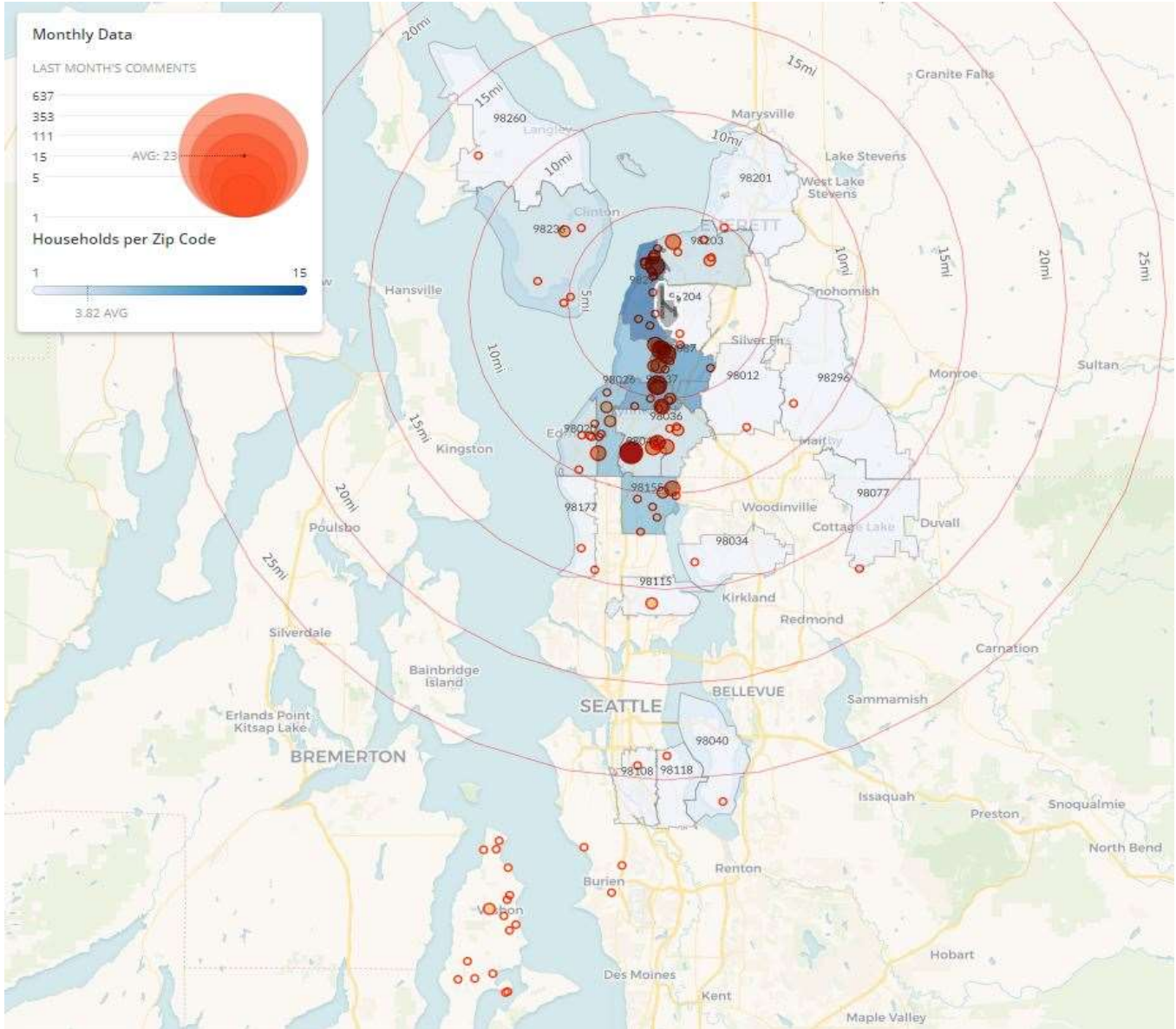
Monthly Totals & Trends: By City



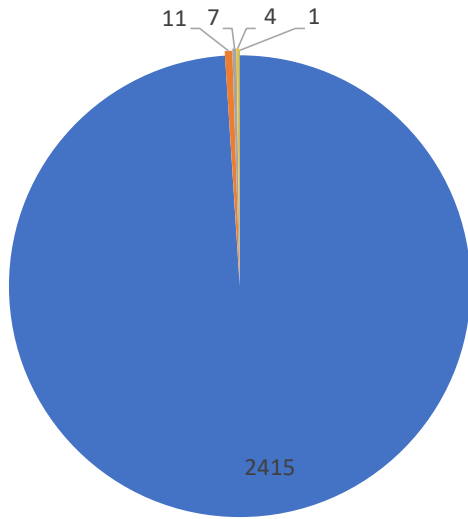
CITY	COMMENTS	DISTINCT HOUSEHOLDS	AVG COMMENTS/HOUSEHOLD
Lynnwood	1,048	24	44
Mountlake Terrace	750	5	150
Mukilteo	297	15	20
Brier	79	2	40
Edmonds	63	14	5
Everett	54	9	6
Vashon	45	17	3
Lake Forest Park	38	3	13
Seattle	21	6	4
Clinton	13	6	2
Shoreline	9	2	5
Snohomish	5	1	5
Burien	4	3	1
Unknown	3	2	2
Mount Lake Terrace	3	1	3
Kirkland	1	1	1
Remaining Cities	5	5	1
Totals	2,438	116	21

Noise Comment Map: By Zip Code

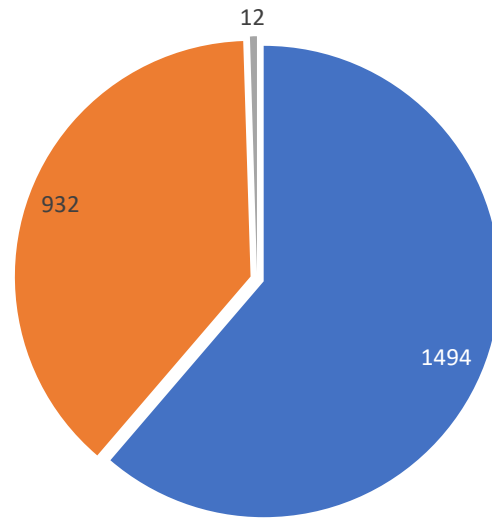
NOTES: Noise comments from households submitted without valid address information are not depicted on the map.



Comment Breakdown: Types & Filing Method



■ Loud ■ Low ■ Unspecified ■ Other ■ Helicopter

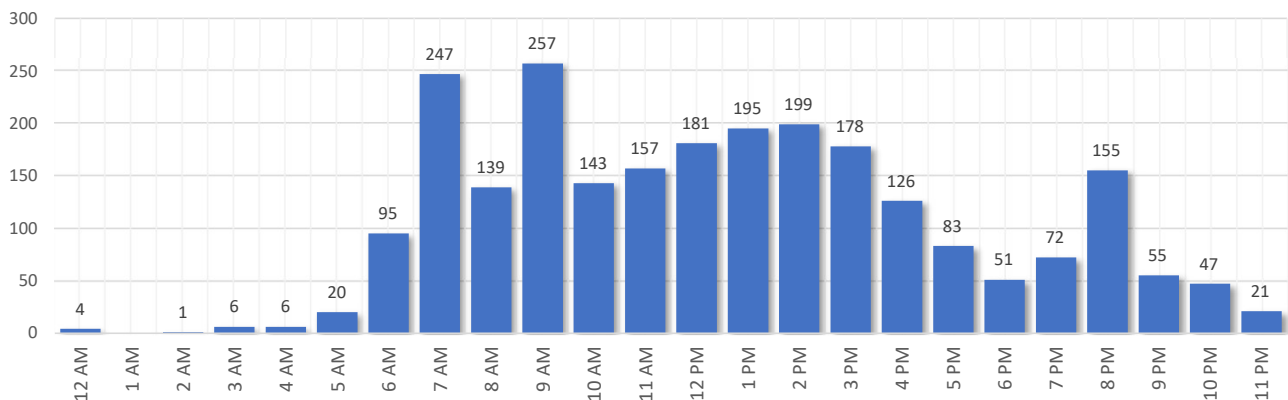


■ Web App ■ Webform ■ Hotline

COMMENT TYPE	COMMENTS
Loud	2415
Low	11
Unspecified	7
Other	4
Helicopter	1

METHOD RECEIVED	COUNT
Web App	1494
Webform	932
Hotline	12

Complaints by Time of Day

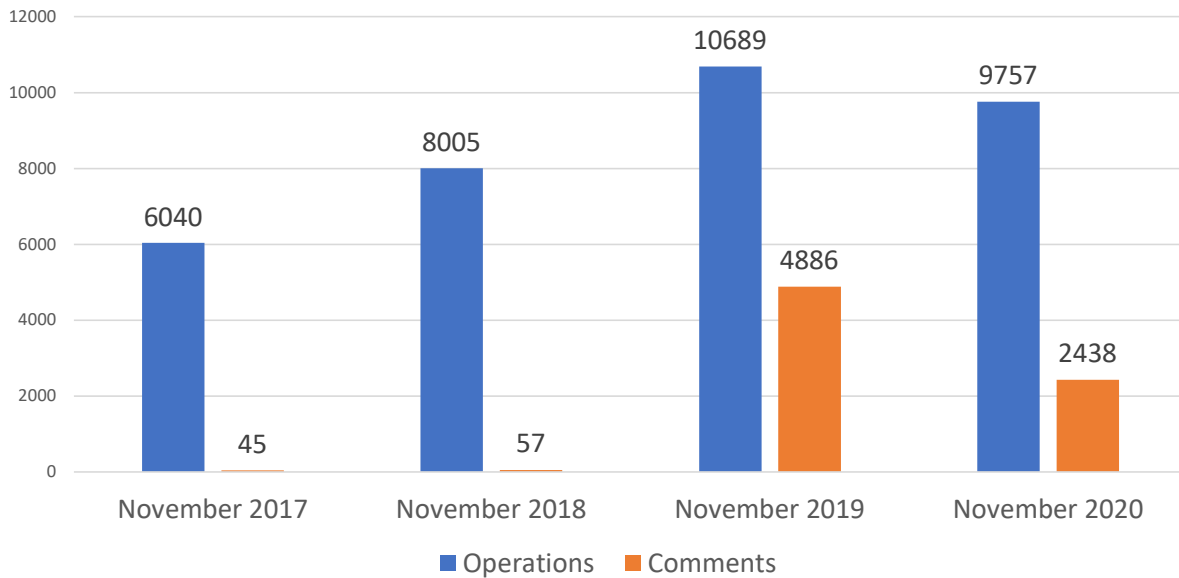




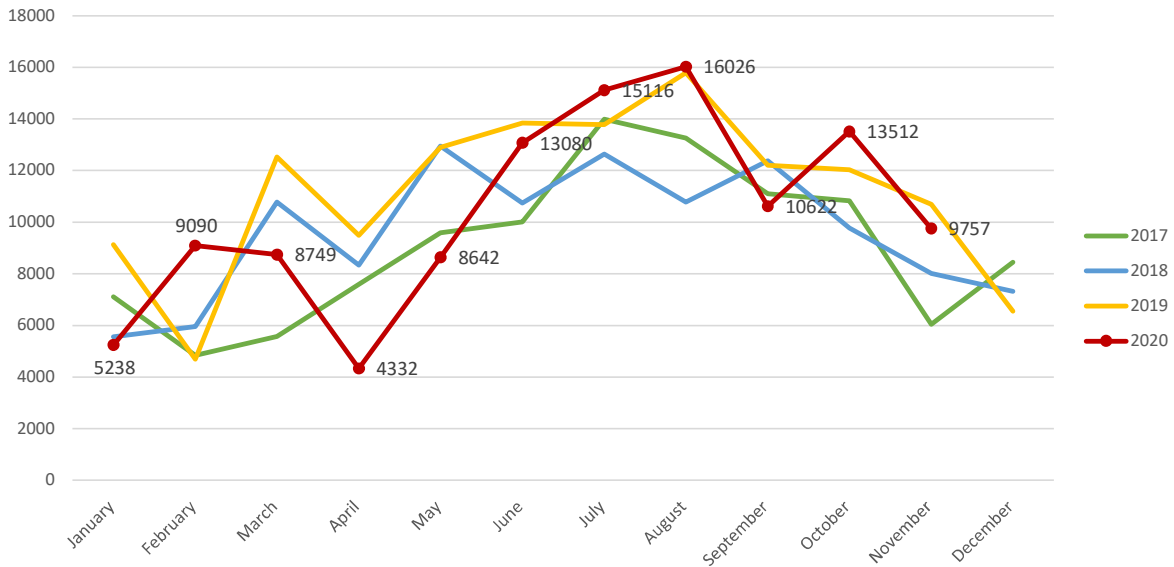
Aircraft Operations Summary:

During November 2020, the Paine Field Air Traffic Control Tower reported 9757 flight operations. This is a 8.7% decrease in operations compared to November 2019 which had 10689 operations. The four-year average for November is 8622 flight operations. Total operations for November were 13.1% above the average.

Monthly Operations VS Noise Comments



Monthly Operations Four Year Data



Paine Field Website: www.paineairport.com
 Noise Abatement Procedures: www.paineairport.com/159/Noise-Abatement-Procedures
 Paine Field Noise FAQ: www.paineairport.com/215/Noise-FAQs
 To submit a noise comment online: www.planenoise.com/kpae
 To submit a noise comment by phone: (425) 284-0500