



EXELIS

EXELIS
COMMERCIAL AVIATION SOLUTIONS

PUBLICVUE VERSION 1.0
QUICK START GUIDE



Exelis

12930 Worldgate Drive

Herndon, Virginia 20170-6008

CONTENTS

| | |
|---------------------------------------------|----------|
| VIEWING REAL-TIME DATA | 1 |
| VIEWING A FLIGHT'S PROPERTIES..... | 2 |
| REPLAYING DATA..... | 3 |
| VIEWING A FLIGHT'S SLANT RANGE | 4 |

VIEWING REAL-TIME DATA

To view real-time data, select the **Flight Tracking** menu option.

The map displays real-time flight data using different colors to distinguish between arrivals, departures, and overflights.

Table 1: Default Icon Colors

| TYPE | COLOR |
|-------------|-------|
| Arrivals | Red |
| Departures | Blue |
| Overflights | Green |
| Unknown | Black |

The various controls available on the map are shown in Figure 1.



Figure 1: Map Controls

Below the map is a table containing flight data. The functions available on the table are shown in Figure 2.

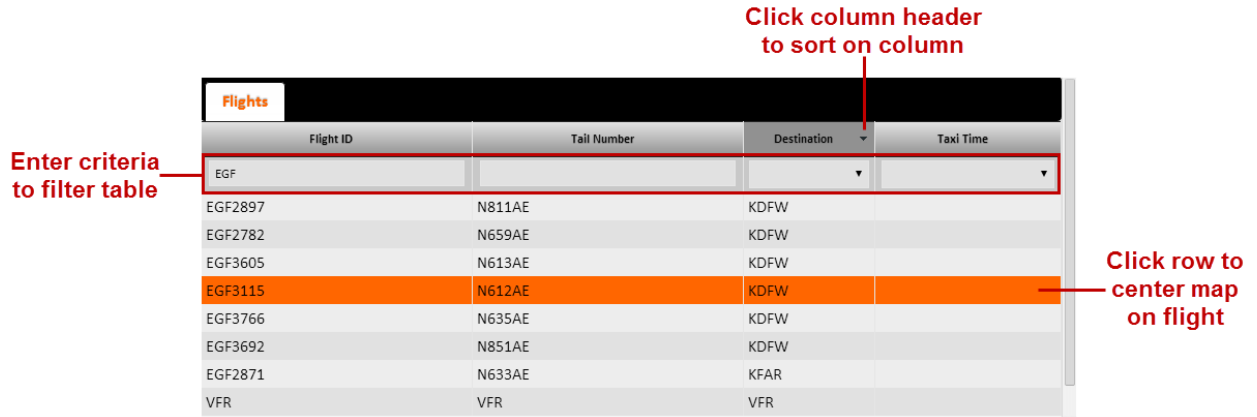


Figure 2: Data Table Function

Viewing a Flight's Properties

To view the properties of a flight, click the flight's icon on the map. A popup displays basic information about the flight. The Details tab in the left panel displays additional information about the flight.

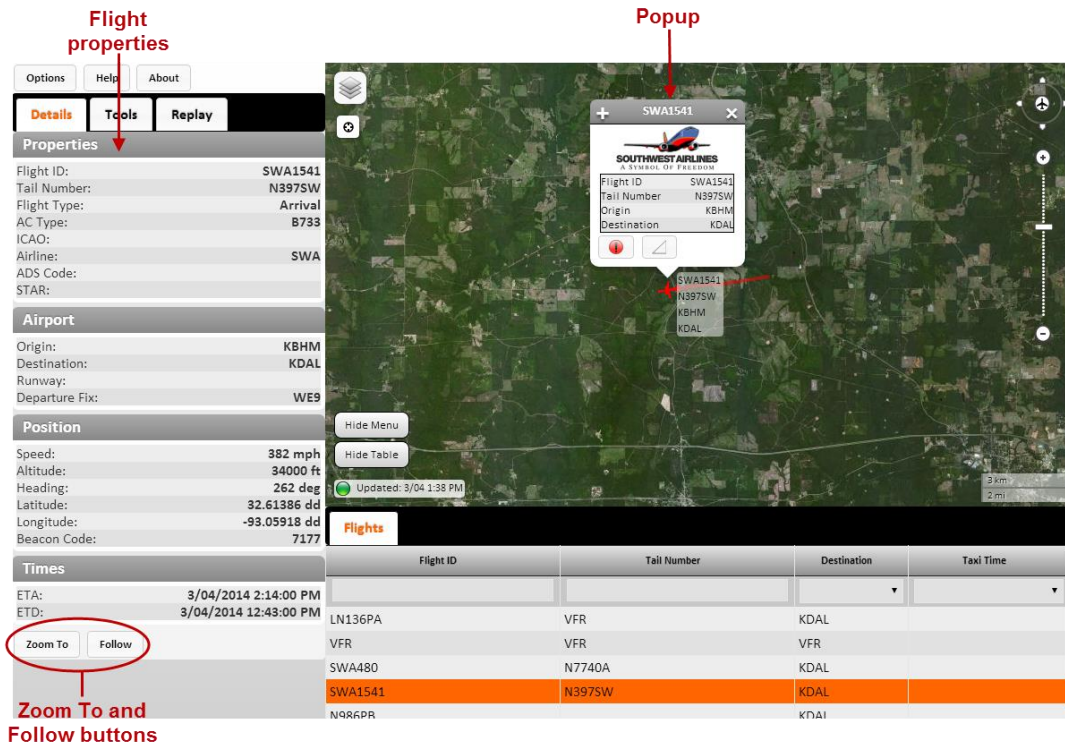


Figure 3: Object Popup and Details

From the Details tab you may:

- Zoom in on the flight by clicking the **Zoom To** button.
- Follow a flight by clicking the **Follow** button.

REPLAYING DATA

Historical flight mode enables you to replay data from previous dates in one hour increments. After specifying the start time, PublicVue replays the events occurring one hour after the specified time.

To replay events from a previous date:

1. Select the **Replay** tab from the left panel.
2. From the Flight Mode section, select **Historical Flights (Replay)**. The Time Window and Playback Controls sections display.
3. Click the **Start Time** field and specify the date and time for which you would like to replay events.

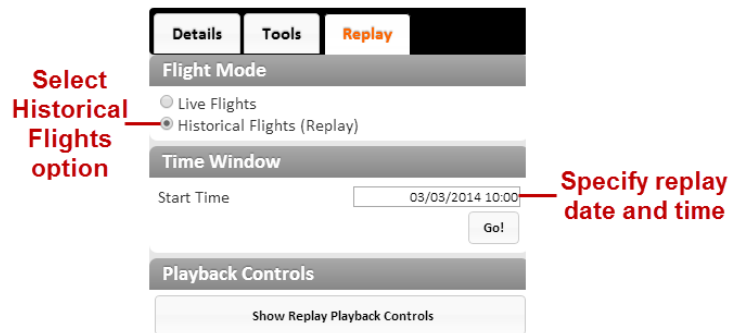


Figure 4: Replay Tab

4. Click **Go**. The replay data is cached and replayed on the map. Use the playback controls to rewind, forward, or change the speed of the replay.

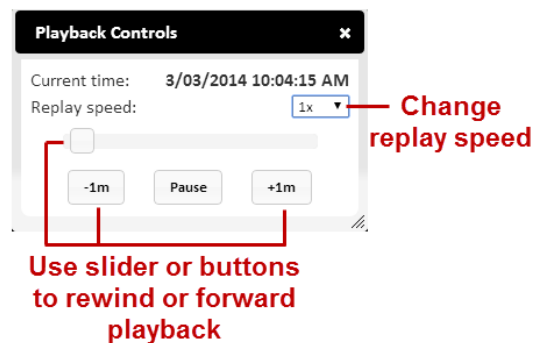



Figure 5: Playback Controls

5. When the end of the one hour increment is reached, you will be asked if you want to start a new replay starting with the current time. To continue the replay, click **Continue**.

VIEWING A FLIGHT'S SLANT RANGE

To view a flight's slant range:

1. Specify your home address. Your home location is used to calculate a flight's slant range from the home location's address.
 - a. From the left panel, select the **Tools** tab.
 - b. In the Find Address section, enter the address that you would like to use as your home location. The Address Lookup popup displays.
2. Click the flight's icon on the map. A popup displays information for the flight.
3. Click the  button in the popup. A popup displays the flight's slant range relative to your home location.

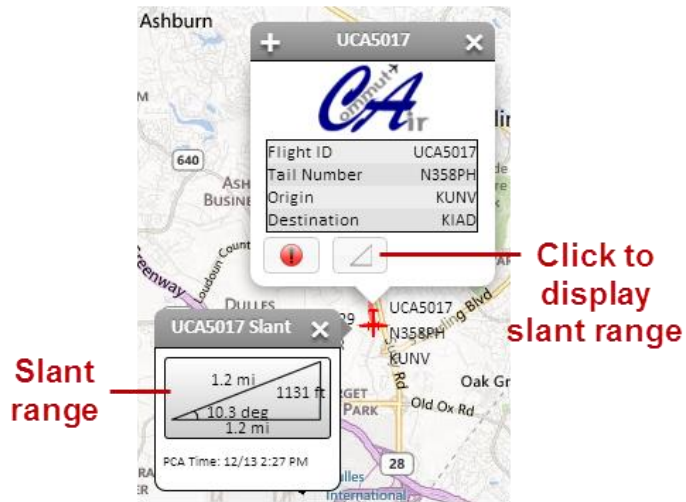


Figure 7: Slant Range